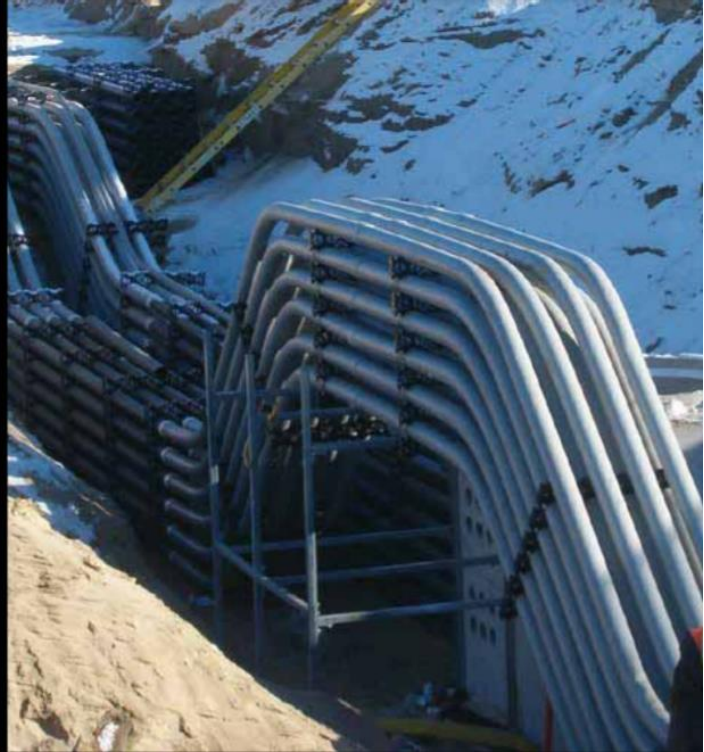


# SUPERDUCT CSA TYPE II PIPES DATA SHEET

POWER &  
COMMUNICATIONS  
DUCT



SUPER **DUCT**®



ELECTRICAL SYSTEMS

## POWER AND COMMUNICATIONS DUCT

- Light Weight
- Long Lengths with Bell Ends
- Flexible



We build tough products for tough environments®

## SUPERDUCT CSA TYPE II PIPES DATA SHEET

# THE PREMIER DUCTING in the market

The premier ducting product on the market, IPEX Super Duct® is specifically engineered and quality manufactured to deliver the high-impact and crush strength demanded by today's utility companies, for underground ducting applications.



Made from a specially formulated compound, Super Duct can withstand high physical loads, while providing the natural flexibility for field bending to accommodate minor changes in elevation or direction. And Super Duct's smooth bore makes cable pulling easier.

Available in trade sizes from 2" to 6" and supplied in 10' or 20' lengths, Super Duct is bell ended for easy assembly in the field using IPEX solvent cement or polyethylene push-fit couplings. Super Duct conforms to the requirements of CSA Standard C22.2 No. 211.1 for encasement in concrete and direct burial.

### SUPER DUCT DIMENSIONS

Dimension	Minimum ID		Nominal Wall		Average OD		
	in	mm	in	mm	in	mm	
2	50	2.001	50.83	.082	2.08	2.250	57.15
3	75	3.000	76.20	.097	2.46	3.250	82.55
3-1/2	90	3.480	88.39	.109	2.77	3.730	94.74
4	100	3.941	100.10	.120	3.05	4.216	107.09
5	125	4.974	126.34	.153	3.89	5.299	134.60
6	150	5.896	149.76	.180	4.57	6.275	159.39

# SUPERDUCT CSA TYPE II PIPES DATA SHEET

---

## MARKETS

- UTILITIES
- TELECOM
- HOSPITALS / MEDICAL COMPLEXES
- COMMERCIAL BUILDINGS
- COMMUNICATIONS
- CABLE

## ADVANTAGES

### LIGHT WEIGHT

---

Super Duct is easy to carry and install, reducing labour requirements and costs.

### LONG LENGTHS

---

Super Duct is available in 10' (3m) and 20' (6.1m) lengths, minimizing the number of connections needed.

### BELL ENDS

---

Super Duct is bell-ended, allowing for easy assembly in the field.

### HIGH COMPRESSIVE STRENGTH

---

Super Duct's specially formulated compound is designed to withstand high loads.

### LOW COEFFICIENT OF FRICTION

---

The smooth bore of Super Duct facilitates cable pulling and eliminates costly cable damage.

### QUALITY CONTROL

---

Stringent, continuous testing ensures that Super Duct is a consistently high quality product.

### FIELD BENDING

---

The natural flexibility of IPEX Super Duct allows field bending, to accommodate minor changes in elevation or direction.

# SUPERDUCT CSA TYPE II PIPES DATA SHEET

## PRODUCT CATALOGUE

### SUPER DUCT PIPE



#### CSA Type II – 10' Length Belled

Dimension (in)	Product Code	Product Code B.C.	Ft/Crate	Weight/100' (lbs)
2	008220	*008225	2,460	33.7
3	008230	*008233	1,120	61.2
3-1/2	008235	*008235	810	77.3
4	008240	*008244	630	99.2
5	008250	*008253	430	159.6
6	008260	*008263	280	226.6

\*Product Codes are for B.C. only.

#### CSA Type II – 20' Length Belled

2	008221	*008226	4,920	33.7
3	008231	*008234	2,240	61.2
3-1/2	008236	*008236	1,620	77.3
4	008241	*008245	1,260	99.2
5	008251	*008254	860	159.6
6	008261	*008264	560	226.6

\*Product Codes are for B.C. only.

#### CSA Type II – Split Duct

Dimension (in)	Product Code	Ft/Crate	Weight/100' (lbs)
2	008222	2,460	33.7
3	008232	1,120	61.2
3-1/2	008237	810	77.3
4	008242	630	99.2
5	008252	430	159.6
6	008262	280	226.6