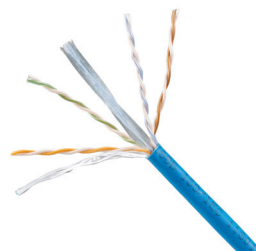


# TX6™ Category 6 UTP Copper Cable

## specifications

Category 6 UTP cable shall meet ANSI/TIA-568-C.2 and IEC 61156-5 Category 6 component standards. The conductors shall be 24 AWG copper insulated with HDPE polymer. The copper conductors shall be twisted in pairs, separated by a cross divider and covered by a low smoke zero halogen or flame retardant PVC jacket.



## technical information

<b>Electrical performance:</b>	Certified performance in a 4-connector configuration up to 100 meters, meets ANSI/TIA-568-C.2, ISO 11801 2nd Edition Class E and IEC 61156-5 Category 6 channel and component requirements
<b>Conductor/insulator:</b>	24 AWG solid copper insulated with HPDE
<b>Certification:</b>	ANATEL 2485-09-6246 for PUC6C04 and PUR6C04 ANATEL 2486-09-6246 for PUL6C04
<b>Flame rating:</b>	LSZH – IEC 60332-1, 60754-2, 61034; EN50575; Euroclass Dca – s2, d2, a1 PVC (CM) – UL 1685; EN50575: Euroclass Eca PVC (CMR) – UL 1666
<b>PoE compliance:</b>	Meets IEEE 802.3af and IEEE 802.3at for PoE applications
<b>Installation tension:</b>	110N (25 lbf) maximum
<b>Temperature rating:</b>	0° to 50°C (32° to 122°F) during installation -20° to 75°C (-4° to 167°F) during operation
<b>Cable jacket:</b>	LSZH – Low Smoke Zero Halogen PVC (CM) – PVC PVC (CMR) – Flame retardant PVC
<b>Cable diameter:</b>	5.9mm (0.233 in.) nominal
<b>Cable weight:</b>	LSZH – 12.5 kg/305m (27 lbs./1000 ft.) PVC (CM) – 12 kg/305m (26 lbs./1000 ft.) PVC (CMR) – 13 kg/305m (28 lbs./1000 ft.)
<b>Packaging:</b>	305m (1000 ft.) easy-pay-out box LSZH – 14.5 kg/305m (30 lbs./1000 ft.) PVC (CM) – 14 kg/305m (29 lbs./1000 ft.) PVC (CMR) – 15 kg/305m (31 lbs./1000 ft.) Packaged tested to ISTA procedure 1A

## key features and benefits

<b>Third party tested</b>	Cable has been tested as part of the TX6™ Category 6 UTP Copper Cabling System by an independent laboratory and complies with the electrical channel requirements of the following standard: ANSI/TIA-568-C.2 Category 6 standard
<b>Descending length cable markings</b>	Easy identification of remaining cable reduces installation time and cable scrap
<b>Cross divider</b>	Separates twisted pairs for robust cable performance
<b>Tested beyond the standards</b>	Cable has been characterized to 350 MHz, 100 MHz above the standard
<b>Easy payout box</b>	Ensures proper performance and provides quick installation

## applications

TX6™ UTP Copper Cable is a component of the Panduit™ TX6™ UTP Copper Cabling System. Interoperable and backward compatible, this end-to-end system provides design flexibility to protect network investments well into the future. With certified performance to the ANSI/TIA-568-C.2 Category 6 and ISO 11801 Class E standards, this system will support the following applications:

- Ethernet 10BASE-T, 100BASE-T (Fast Ethernet), 1000BASE-T (Gigabit Ethernet), 10GBASE-T (10 Gigabit Ethernet over limited distances as specified in the industry 10GBASE-T standards)
- 155 Mb/s ATM, 622 Mb/s ATM, 1.2 Gb/s ATM
- Token ring 4/16

[www.panduit.com](http://www.panduit.com)

### TX6™ UTP Copper Cabling System

#### TX6™ UTP Copper Cable

<b>LSZH:</b>	PUL6C04BU-C*
<b>CM:</b>	PUC6C04BU-C*
<b>CMR:</b>	PUR6C04BU-C*

#### Mini-Com® TX6™ PLUS UTP Jack Module

<b>Jack module:</b>	CJ688TGIWY**
---------------------	--------------

#### TX6™ PLUS UTP Patch Cords – CM

<b>Foot lengths:</b>	UTPSP3^Y
<b>Meter lengths:</b>	UTPSP1^^MY

#### TX6™ PLUS UTP Patch Cords – LSZH

<b>Foot lengths:</b>	UTPSPL3^Y
<b>Meter lengths:</b>	UTPSPL^^1MY

#### DP6™ PLUS Punchdown Patch Panels

<b>Angled, 24-port, 1RU:</b>	DPA24688TGY
<b>Angled, 48-port, 1RU:</b>	DPA48688TGY
<b>Flat, 24-port, 1RU:</b>	DP24688TGY
<b>Flat, 48-port, 2RU:</b>	DP48688TGY

#### Mini-Com® Flush Mount Modular Patch Panels

<b>Angled, 24-port, 1RU:</b>	CPPA24FMWBLY
<b>Angled, 48-port, 2RU:</b>	CPPA48FMWBLY
<b>Flat, 24-port, 1RU:</b>	CPP24FMWBLY
<b>Flat, 48-port, 2RU:</b>	CPP48FMWBLY

#### Termination and Cable Prep Tools

<b>Termination tools:</b>	EGJT or TGJT
<b>Conductor stripping tool:</b>	CWST
<b>Conductor stripping tool:</b>	CJAST

\*For standard cable colors other than BU (Blue), replace BU in part number with WH (White) or IG (International Gray). Standard pallets are configured in 2 layers, 10 cartons per layer, total of 20 cartons per pallet. Add E to end of part number for European pallets which are configured in 2 layers, 7 cartons per layer, total of 14 cartons per pallet.

\*\*For standard colors other than Off White (IW), replace suffix with EI (Electrical Ivory), IG (International Gray), AW (Arctic White), WH (White), BL (Black), BU (Blue), RD (Red), YL (Yellow), GR (Green), or VL (Violet). Add -24 to end of part number for 24 pack convenience package.

^For standard foot lengths other than 3 feet, replace the 3 in the part number with 1 to 20 feet (one foot increments) 25, 30, 35 or 40. For standard colors other than Off White, add suffix BU (Blue), RD (Red), YL (Yellow), or GR (Green) before the Y at the end of the part number. For example, the part number for a blue, CM, Category 6, 5-foot patch cord is UTPSP5BUY.

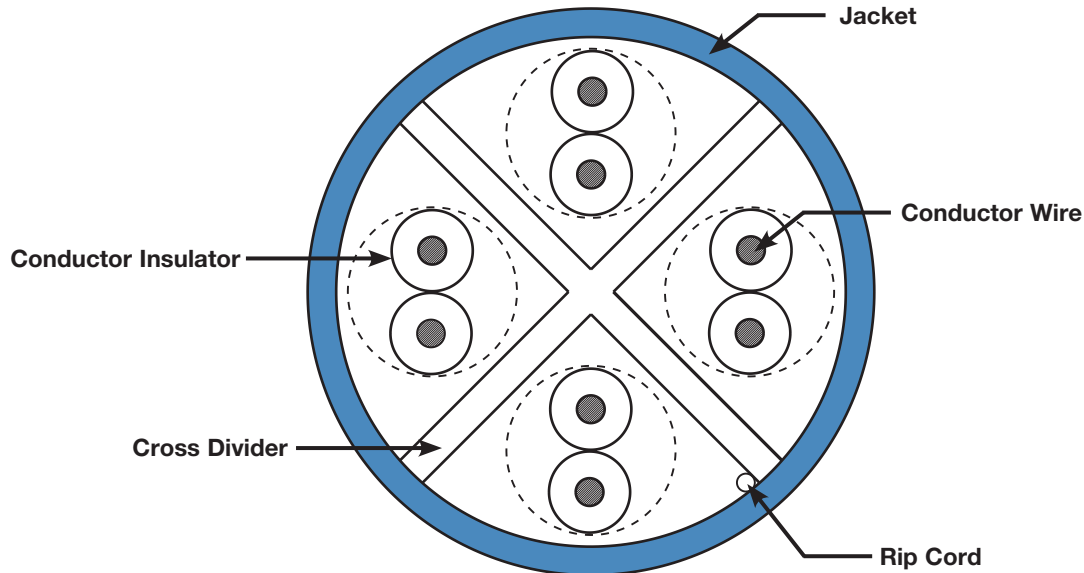
^^For standard meter lengths other than 1 meter, replace the 1 in the part number with 1–10 meters (one meter increments) 0.5, 1.5, 2.5, 15, or 20. For standard colors other than Off White, add suffix BU (Blue), RD (Red), YL (Yellow), or GR (Green) before Y at the end of the part number. For example, the part number for a blue, CM, Category 6, 5-meter patch cord is UTPSP5MBUY.

# TX6™ Category 6 UTP Copper Cable

## additional specifications

<i>Mechanical Test</i>	
Ultimate Breaking Strength	>400 N (90 lbf)
Minimum Bend Radius	4 x cable diameter
<i>Electrical Test</i>	
DC Resistance	<9.38 Ohm per 100m (328 ft.)
DC Resistance Unbalance	<5%
Mutual Capacitance	<5.6 nF per 100m (328 ft.)
Capacitance Unbalance	<330 pF per 100m (328 ft.)
Characteristic Impedance	100 Ohm +/-15% up to 100 MHz
Nominal Velocity of Propagation (NVP)	65%
Operating Voltage, Maximum	80V

## cable construction



### WORLDWIDE SUBSIDIARIES AND SALES OFFICES

PANDUIT US/CANADA  
Phone: 800.777.3300

PANDUIT EUROPE LTD.  
London, UK  
cs-emea@panduit.com  
Phone: 44.20.8601.7200

PANDUIT SINGAPORE PTE. LTD.  
Republic of Singapore  
cs-ap@panduit.com  
Phone: 65.6305.7575

PANDUIT JAPAN  
Tokyo, Japan  
cs-japan@panduit.com  
Phone: 81.3.6863.6000

PANDUIT LATIN AMERICA  
Guadalajara, Mexico  
cs-la@panduit.com  
Phone: 52.33.3777.6000

PANDUIT AUSTRALIA PTY. LTD.  
Victoria, Australia  
cs-aus@panduit.com  
Phone: 61.3.9794.9020

For a copy of Panduit product warranties, log on to [www.panduit.com/warranty](http://www.panduit.com/warranty)

For more information

Visit us at [www.panduit.com](http://www.panduit.com)

Contact Customer Service by email: [cs@panduit.com](mailto:cs@panduit.com)  
or by phone: 800-777-3300

**PANDUIT**®

© 2017 Panduit Corp.  
ALL RIGHTS RESERVED.  
COSP367--WW-ENG  
Replaces WW-COSP166  
8/2017