



# ESX1 LED Area Luminaire

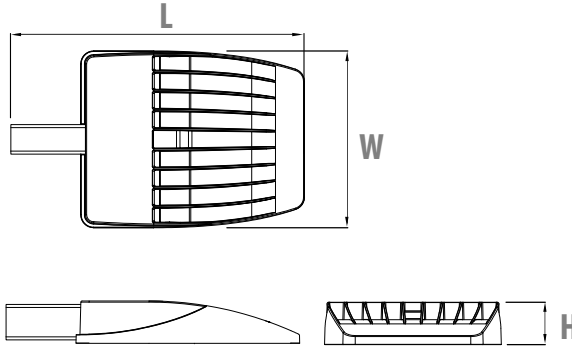


|                |
|----------------|
| Catalog Number |
| Notes          |
| Type           |

Hit the Tab key or mouse over the page to see all interactive elements.

## Specifications

|                |   |
|----------------|---|
| <b>EPA</b>     | 0.40 ft <sup>2</sup> (0.04 m <sup>2</sup> ) |
| <b>Length:</b> | 19.9" (50.5 cm)                             |
| <b>Width:</b>  | 12" (30.5 cm)                               |
| <b>Height:</b> | 2.9" (7.4 cm)                               |
| <b>Weight:</b> | 11.2 lbs (5.1 kg)                           |



## Introduction

The ESX LED area luminaire provides the combination of best product, best price and best delivery. ESX is ideal for one-for-one replacement of HID area lighting and provides up to 76% energy savings, long service life and fast payback.

The ESX1 delivers 8,000 to 25,000 lumens allowing it to replace 150W to 400W HID luminaires. All ESX luminaires feature adjustable light output, providing two light levels from one product, allowing greater flexibility in the field and on distributors' shelves.

All luminaires feature a reversible arm that allows for mounting on both round and square poles. Eight configurations of ESX1 luminaires are stocked in Acuity Brands distribution centers.

## Ordering Information

| HID Equivalent | Luminaire / Performance Package | High   |       | Low    |       | Distribution | Voltage  | Catalog Number                            | CI Code | UPC            |
|----------------|---------------------------------|--------|-------|--------|-------|--------------|----------|---|---------|----------------|
|                |                                 | Lumens | Watts | Lumens | Watts |              |          |   |         |                |
| <b>4000K</b>   |                                 |        |       |        |       |              |          |   |         |                |
| 150W to 250W   | <b>ESX1 LED P2</b>              | 14,000 | 98W   | 8,000  | 50W   | Type 3       | 120-277V | ESX1 LED P2 40K R3 MVOLT UPA BLS DDBXD M2 | *269PG3 | 00194994838302 |
| 400W           | <b>ESX1 LED P4</b>              | 25,000 | 190W  | 21,000 | 146W  | Type 3       | 120-277V | ESX1 LED P4 40K R3 MVOLT UPA BLS DDBXD M2 | *269PG8 | 00194994838340 |
|                |                                 |        |       |        |       |              | 347-480V | ESX1 LED P4 40K R3 HVOLT UPA BLS DDBXD M2 | *269PGC | 00194994838364 |
|                |                                 |        |       |        |       | Type 5       | 120-277V | ESX1 LED P4 40K R5 MVOLT UPA BLS DDBXD M2 | *269PGG | 00194994838418 |
|                |                                 |        |       |        |       |              | 347-480V | ESX1 LED P4 40K R5 HVOLT UPA BLS DDBXD M2 | *269PGN | 00194994838463 |
| <b>5000K</b>   |                                 |        |       |        |       |              |          |   |         |                |
| 150W to 250W   | <b>ESX1 LED P2</b>              | 14,000 | 98W   | 8,000  | 50W   | Type 3       | 120-277V | ESX1 LED P2 50K R3 MVOLT UPA BLS DDBXD M2 | *269PGY | 00194994838555 |
| 400W           | <b>ESX1 LED P4</b>              | 25,000 | 190W  | 21,000 | 146W  | Type 3       | 120-277V | ESX1 LED P4 50K R3 MVOLT UPA BLS DDBXD M2 | *269PH1 | 00194994838531 |
|                |                                 |        |       |        |       | Type 5       | 120-277V | ESX1 LED P4 50K R5 MVOLT UPA BLS DDBXD M2 | *269PH2 | 00194994838548 |

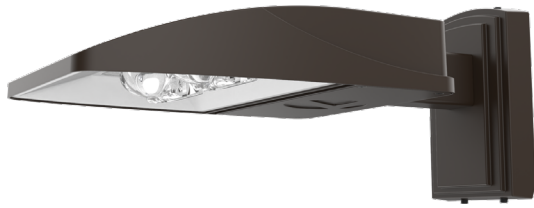
Note: Luminaire ships set on high (switchable to low). All luminaires feature adjustable light output, a reversible arm for mounting on round and square poles and dark bronze finish. The lumen output and input watts shown are nominal values. Refer to the lumens table on page 3 for specific values.

**Accessories:** Order as separate catalog number.

| Catalog Number | Description                              | CI Code | UPC            |
|----------------|--|---------|----------------|
| ESXWBA DDBXD U | ESX WBA wall bracket, dark bronze finish | *27055T | 00194995092826 |

Note: Accessories are ordered and shipped separately from the luminaire.



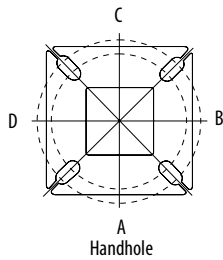


Wall Bracket (WBA)

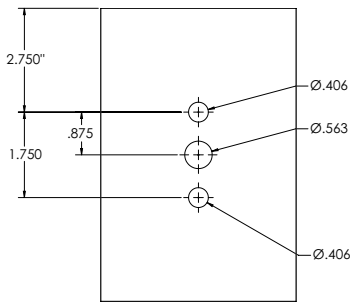
Pole/Mounting Information

Accessories including bullhorns, cross arms and other adapters are available under the accessories tab at Lithonia's Outdoor Poles and Arms product page. Click here to visit [Accessories](#).

HANDHOLE ORIENTATION



DRILLING TEMPLATE #20



Round Tenon Mount - Pole Top Slipfitters

| Tenon O.D. | ESX1 Mounting | Single     | 2 at 180°  | 2 at 90°   | 3 at 120°  | 3 at 90°   | 4 at 90°   |
|------------|---------------|------------|------------|------------|------------|------------|------------|
| 2 - 3/8"   | UPA (round)   | ASR4-5 190 | ASR4-5 280 | ASR4-5 290 | ASR4-5 320 | ASR4-5 390 | ASR4-5 490 |

Drill/Side Location by Configuration Type

| Drilling Template | Mounting Option    | Single  | 2 @ 180    | 2 @ 90     | 3 @ 120         | 3 @ 90        | 4 @ 90           |
|-------------------|--------------------|---------|------------|------------|-----------------|---------------|------------------|
|                   | Head Location      | Side B  | Side B & D | Side B & C | Round Pole Only | Side B, C & D | Side A, B, C & D |
| #20               | Drill Nomenclature | DM19ESX | DM28ESX    | DM29ESX    | DM32ESX         | DM39ESX       | DM49ESX          |

Luminaire EPA

\*Includes luminaire and integral mounting arm. Other tenons, arms, brackets or other accessories are not included in this EPA data.

| Fixture Quantity & Mounting Configuration | Single | 2 @ 90 | 2 @ 180 | 3 @ 90 | 3 @ 120 | 4 @ 90 | 2 Side by Side | 3 Side by Side | 4 Side by Side |
|---|--------|--------|---------|--------|---------|--------|----------------|----------------|----------------|
| Mounting Type                             |        |        |         |        |         |        |                |                |                |
| UPA - Reversible Arm Mount                | 0.40   | 0.79   | 0.79    | 1.19   | 1.19    | 1.58   | 0.79           | 1.19           | 1.58           |



UPA - Reversible Arm Mount

The UPA reversible arm is designed to mount onto round and square poles. During installation, the flat end of the arm is placed against the flat surface on square poles. When using with round poles, the arm can be turned around so that the curved end is placed against the curvature on round poles. ESX1 can be mounted onto minimum 3.5" square and round poles.



Adjustable Light Output (ALO) technology:

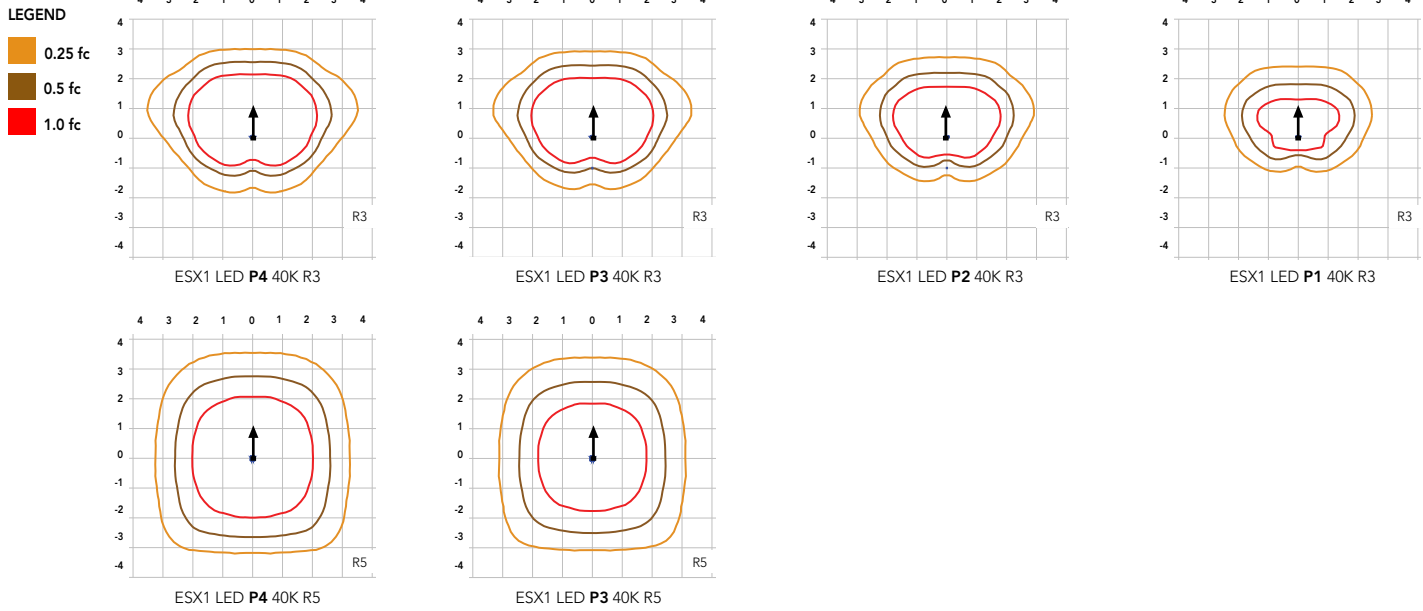
Internal bi-level switch with two light levels for greater flexibility within one product (default set to high)

|             | High Lumens | Low Lumens | HID Replacement |
|-------------|-------------|------------|-----------------|
| ESX1 LED P2 | 14,000      | 8,000      | 150W to 250W    |
| ESX1 LED P4 | 25,000      | 21,000     | 400W            |

## Photometric Diagrams

To see complete photometric reports or download .ies files for this product, visit Lithonia Lighting's [ESX Area homepage](#).

Isofootcandle plots for the ESX1. Distances are in units of mounting height (25').



## Performance Data

### Lumen Output

Lumen values are from photometric tests performed in accordance with IESNA LM-79-08. Data is considered to be representative of configurations shown within the tolerances described within LM-79. Contact factory for performance data on any configurations not shown here.

| Series      | Performance Package  | System Watts | Distribution Type | 40K (4000K, 70 CRI) |   |   |   |     | 50K (5000K, 70 CRI) |   |   |   |     |
|-------------|----------------------|--------------|-------------------|---------------------|---|---|---|-----|---------------------|---|---|---|-----|
|             |                      |              |                   | Lumens              | B | U | G | LPW | Lumens              | B | U | G | LPW |
| ESX1 LED P2 | P1 (switched to low) | 50W          | R3                | 7,874               | 2 | 0 | 2 | 157 | 7,993               | 2 | 0 | 2 | 160 |
|             | P2                   | 98W          | R3                | 13,917              | 2 | 0 | 2 | 142 | 14,128              | 2 | 0 | 2 | 144 |
| ESX1 LED P4 | P3 (switched to low) | 146W         | R3                | 20,658              | 3 | 0 | 3 | 141 | 20,881              | 3 | 0 | 3 | 143 |
|             |                      |              | R5                | 21,680              | 5 | 0 | 3 | 148 | 21,914              | 5 | 0 | 3 | 150 |
|             | P4                   | 190W         | R3                | 25,034              | 3 | 0 | 3 | 132 | 25,304              | 3 | 0 | 3 | 133 |
|             |                      |              | R5                | 26,273              | 5 | 0 | 3 | 138 | 26,557              | 5 | 0 | 3 | 140 |

### Electrical Load

| Performance Package | System Watts (W) | Current (A) |      |      |      |      |      |
|---------------------|------------------|-------------|------|------|------|------|------|
|                     |                  | 120V        | 208V | 240V | 277V | 347V | 480V |
| P1 (low)            | 50W              | 0.41        | 0.24 | 0.21 | 0.18 | ---  | ---  |
| P2                  | 98W              | 0.81        | 0.47 | 0.41 | 0.35 | ---  | ---  |
| P3 (low)            | 146W             | 1.22        | 0.70 | 0.61 | 0.53 | 0.42 | 0.30 |
| P4                  | 190W             | 1.58        | 0.91 | 0.79 | 0.69 | 0.55 | 0.40 |

### Lumen Ambient Temperature (LAT) Multipliers

Use these factors to determine relative lumen output for average ambient temperatures from 0-40°C (32-104°F).

| Ambient Temperature |       | Lumen Multiplier |
|---------------------|-------|------------------|
| 0°C                 | 32°F  | 1.03             |
| 5°C                 | 41°F  | 1.03             |
| 10°C                | 50°F  | 1.02             |
| 15°C                | 59°F  | 1.01             |
| 20°C                | 68°F  | 1.01             |
| 25°C                | 77°F  | 1.00             |
| 30°C                | 86°F  | 0.99             |
| 35°C                | 95°F  | 0.99             |
| 40°C                | 104°F | 0.98             |

### Projected LED Lumen Maintenance

Data references the extrapolated performance projections for the platforms noted in a 25°C ambient and hours of LED testing (tested per IESNA LM-80-08 and reported per IESNA M-21-11).

To calculate LLF, use the lumen maintenance factor that corresponds to the luminaire performance package below. For other lumen maintenance values, contact factory.

| Performance Package | TM-21 Percent Lumen Maintenance at 60,000 hrs |
|---------------------|---|
| P1 / P2             | 89%   |
| P3                  | 88%   |
| P4                  | 87%   |