


Philips InteGrade LED products

InteGrade LED system gen 3 (premium white range)

InteGrade LED engines have been designed to match the most common application lengths, reducing the number of components needed per installation; yet maintaining the outstanding flexibility that its modular approach offers, enabling the creation of odd size lighting solutions to match every project specification. Thanks to a range of engine lengths, fixtures, accessories like mounting profiles, mounting clips, power cables, and Philips Constant Voltage LED drivers the InteGrade LED system gen 3 offers maximum design flexibility and plug-and-play simplicity to enable a vast variety of innovative systems with style, modernity and functionality according to the needs of the stores.


For shelf lighting InteGrade engine value premium white gen 3 Product specification



Product name	Power consumption	Lumen	Color Rendering Index	Correlated Color Temperature*	Product code
	W, typical ± 20%	lm, typical ± 20%	CRI, typical	K	(12NC)
InteGrade engine Va 140mm 930 PW G3	0,8	85	93	3000	929001567506
InteGrade engine Va 575mm 930 PW G3	3,4	380	93	3000	929001567606
InteGrade engine Va 855mm 930 PW G3	4,9	550	93	3000	929001567706
InteGrade engine Va 1150mm 930 PW G3	6,7	760	93	3000	929001567806
InteGrade engine Va 140mm 940 PW G3	0,8	90	93	4000	929001567906
InteGrade engine Va 575mm 940 PW G3	3,4	420	93	4000	929001568006
InteGrade engine Va 855mm 940 PW G3	4,9	600	93	4000	929001568106
InteGrade engine Va 1150mm 940 PW G3	6,7	840	93	4000	929001568206

* Correlated color temperature within 5 SDCM range


InteGrade engine vision premium white gen 3 Product specification



Product name	Power consumption	Lumen	Color Rendering Index	Correlated Color Temperature*	Product code
	W, typical ± 20%	lm, typical ± 20%	CRI, typical	K	(12NC)
InteGrade engine Vi 140mm 930 PW G3	1,6	170	93	3000	929001568306
InteGrade engine Vi 575mm 930 PW G3	6,9	750	93	3000	929001568406
InteGrade engine Vi 855mm 930 PW G3	10,1	1090	93	3000	929001568506
InteGrade engine Vi 1150mm 930 PW G3	13,8	1500	93	3000	929001568606
InteGrade engine Vi 140mm 940 PW G3	1,6	180	93	4000	929001568706
InteGrade engine Vi 575mm 940 PW G3	6,9	800	93	4000	929001568806
InteGrade engine Vi 855mm 940 PW G3	10,1	1160	93	4000	929001568906
InteGrade engine Vi 1150mm 940 PW G3	13,8	1600	93	4000	929001569006

* Correlated color temperature within 5 SDCM range


For canopy lighting InteGrade engine uniform beam value premium white gen 3 Product specification



Product name	Power consumption	Lumen	Color Rendering Index	Correlated Color Temperature*	Product code
	W, typical ± 20%	lm, typical ± 20%	CRI, typical	K	(12NC)
InteGrade engine UB Va 855mm 930 PW G3	9,6	940	93	3000	929001626606
InteGrade engine UB Va 1150mm 930 PW G3	12,8	1250	93	3000	929001626806
InteGrade engine UB Va 855mm 940 PW G3	9,6	1025	93	4000	929001626706
InteGrade engine UB Va 1150mm 940 PW G3	12,8	1350	93	4000	929001626906

* Correlated color temperature within 5 SDCM range

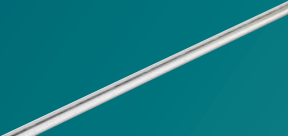
InteGrade engine uniform beam vision premium white gen 3 Product specification



Product name	Power consumption	Lumen	Color Rendering Index	Correlated Color Temperature*	Product code
	W, typical ± 20%	lm, typical ± 20%	CRI, typical	K	(12NC)
InteGrade engine UB Vi 140mm 930 PW G3	2,5	250	93	3000	929001572506
InteGrade engine UB Vi 575mm 930 PW G3	10	1000	93	3000	929001569706
InteGrade engine UB Vi 855mm 930 PW G3	15	1500	93	3000	929001569806
InteGrade engine UB Vi 1150mm 930 PW G3	20	2000	93	3000	929001569906
InteGrade engine UB Vi 140mm 940 PW G3	2,5	280	93	4000	929001572606
InteGrade engine UB Vi 575mm 940 PW G3	10	1100	93	4000	929001570006
InteGrade engine UB Vi 855mm 940 PW G3	15	1650	93	4000	929001570106
InteGrade engine UB Vi 1150mm 940 PW G3	20	2200	93	4000	929001570206

* Correlated color temperature within 5 SDCM range

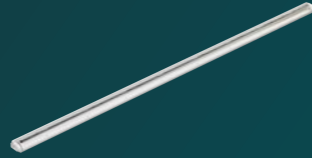
For chillers with doors InteGrade engine narrow beam value premium white gen 3 Product specification



Product name	Power consumption	Lumen	Color Rendering Index	Correlated Color Temperature*	Product code
	W, typical ± 20%	lm, typical ± 20%	CRI, typical	K	(12NC)
InteGrade engine NB Va 140mm 930 PW G3	1	115	93	3000	929001569106
InteGrade engine NB Va 575mm 930 PW G3	4,5	500	93	3000	929001569206
InteGrade engine NB Va 1430mm 930 PW G3	11	1230	93	3000	929001569306
InteGrade engine NB Va 140mm 940 PW G3	1	120	93	4000	929001569406
InteGrade engine NB Va 575mm 940 PW G3	4,5	530	93	4000	929001569506
InteGrade engine NB Va 1430mm 940 PW G3	11	1300	93	4000	929001569606

* Correlated color temperature within 5 SDCM range

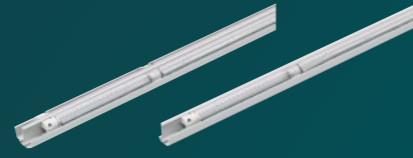
InteGrade engine narrow beam vision premium white gen 3
Product specification



Product name	Power consumption	Lumen	Color Rendering Index	Correlated Color Temperature*	Product code
	W, typical ± 20%	lm, typical ± 20%	CRI, typical	K	(12NC)
InteGrade engine NB Vi 140mm 930 PW G3	2,7	280	93	3000	929001605406
InteGrade engine NB Vi 575mm 930 PW G3	10,9	1146	93	3000	929001681106
InteGrade engine NB Vi 1430mm 930 PW G3	27,2	2850	93	3000	929001571706
InteGrade engine NB Vi 140mm 940 PW G3	2,7	300	93	4000	929001605506
InteGrade engine NB Vi 575mm 940 PW G3	10,9	1200	93	4000	929001681206
InteGrade engine NB Vi 1430mm 940 PW G3	27,2	3100	93	4000	929001571806

* Correlated color temperature within 5 SDCM range
PW: premium white

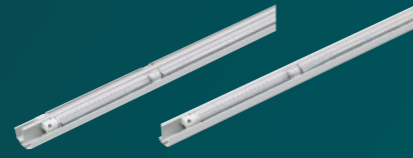
InteGrade fixture narrow beam value premium white gen 3
Product specification



Product name	Power consumption	Lumen	Color Rendering Index	Correlated Color Temperature*	Product code
	W, typical ± 20%	lm, typical ± 20%	CRI, typical	K	(12NC)
InteGrade F NB Va 1500mm 930 PW SD G3	11	1230	93	3000	929001572006
InteGrade F NB Va 1500mm 930 PW CTR G3	22	2460	93	3000	929001572106
InteGrade F NB Va 1500mm 940 PW SD G3	11	1300	93	4000	929001572206
InteGrade F NB Va 1500mm 940 PW CTR G3	22	2600	93	4000	929001572306

* Correlated color temperature within 5 SDCM range

InteGrade fixture narrow beam vision premium white gen 3
Product specification



Product name	Power consumption	Lumen	Color Rendering Index	Correlated Color Temperature*	Product code
	W, typical ± 20%	lm, typical ± 20%	CRI, typical	K	(12NC)
InteGrade F NB Vi 1500mm 930 PW SD G3	26,2	2850	93	3000	929001570306
InteGrade F NB Vi 1500mm 930 PW CTR G3	52,4	5700	93	3000	929001570406
InteGrade F NB Vi 1500mm 940 PW SD G3	26,3	3100	93	4000	929001570506
InteGrade F NB Vi 1500mm 940 PW CTR G3	52,6	6200	93	4000	929001570606

* Correlated color temperature within 5 SDCM range

InteGrade engine high flux premium white gen 3
Product specification



Product name	Power consumption	Lumen	Color Rendering Index	Correlated Color Temperature*	Product code
	W, typical ± 20%	lm, typical ± 20%	CRI, typical	K	(12NC)
InteGrade engine HF 140mm 930 PW G3	4,4	400	93	3000	929001605606
InteGrade engine HF 575mm 930 PW G3	17,5	1575	93	3000	929001605706
InteGrade engine HF 1150mm 930 PW G3	34,9	3150	93	3000	929001605806
InteGrade engine HF 140mm 940 PW G3	4,0	400	93	4000	929001605906
InteGrade engine HF 575mm 940 PW G3	16,1	1575	93	4000	929001606006
InteGrade engine HF 1150mm 940 PW G3	32,2	3150	93	4000	929001606106

* Correlated color temperature within 5 SDCM range

InteGrade LED system premium white gen 3

Plug and play Philips constant voltage driver list	Product code
	(12NC)
LED transformer 60W 24VDC 120V PP	929002106080
LED transformer 60W 24VDC 220-240V PP	929002106280
LED transformer 100W 24VDC 120V PP	929002106180
LED transformer 100W 24VDC 220-240V PP	929002106380
LED transformer 150W 24VDC 220-240V PP	929002106480

Non-plug and play Philips constant voltage drivers	Product code
	(12NC)
LED power driver 20W 24VDC 100-240V	929000654006
LED power driver 80W 24VDC 120-240V	929001669406
LED power driver 100W 24VDC 120-240V	929001669506
LED power driver 150W 24VDC 120-240V	929002101980
LED power driver 240W 24VDC 120-240V	929002102080
LED transformer 20W 24VDC 120-277V	929002105580
LED transformer 40W 24VDC 120-277V	929002105680
LED transformer 60W 24VDC 120-277V	929002105780
LED transformer 60W 24VDC 220-240V	913710032267
LED transformer 100W 24VDC 120-277V	929002105880
LED transformer 120W 24VDC 220-240V	913710032567
LED transformer 150W 24VDC 220-240V	929002105980
Xitanium 77W 100-277V 3.2A XI077C320V024FNS1M *	929001708113
Xitanium 100W 100-277V 4.1A XI100C410V024FNS1M*	929000771913
LED driver outdoor 100W 100-240V 24V**	929000485303

* Only for NAM region
** Only for Japan

Accessories	Product code
	(12NC)
Clips	
InteGrade mounting clip shelf arm V2	929000957806
InteGrade engine clip shelf arm G2	929001516006
InteGrade engine mounting clip G2	929001516106
InteGrade mounting clip under shelf	929000643903
InteGrade engine clip magnetic	929001624606
InteGrade mounting clip canopy	929001571106
InteGrade engine clip mullion side	929001624506
InteGrade engine clip mullion center	929001624406
InteGrade mounting clip for T style prof	929000853213
Profiles	
InteGrade profile 875mm(34")	929000643413
InteGrade profile 1175mm(46")	929000643313
InteGrade profile 2000mm(79")	929000654413
InteGrade profile 2000mm(79") F style	929000654313
InteGrade profile 2000mm(79") L style	929000654513

InteGrade prof 2000mm(79") T style CTR	929000853013
InteGrade profile 2000mm(79") T style SD	929000853113
InteGrade profile 2356mm(93") M style	929000871313
Power cables - to connect engine to driver	
InteGrade power cable 0.7m white	929001625306
InteGrade power cable 1m(39") black	929000641014
InteGrade power cable 2.5m(98") black	929000641114
InteGrade cable 1m(39") black angle	929000644614
InteGrade cable 2.5m(98") black angle	929000644814
InteGrade power cable 1m(39") white	929000645614
InteGrade power cable 1.85m white	929001625206
InteGrade power cable 2.5m(98") white	929000644514
InteGrade cable 1m(39") white angle	929000644714
InteGrade cable 2.5m(98") white angle	929000644914
InteGrade power cable 6m white	929001624806
InteGrade spacer cable 113mm white	929001625106
InteGrade spacer cable 0.3m black	929001625006
InteGrade spacer cable 0.5m black	929000645014
InteGrade spacer cable 0.5m white	929000645114
InteGrade spacer cable M 0.7m 5.5c black	929001624706
InteGrade extension cab 1.5m(59") black	929000874413
InteGrade Y cable black	929000874313
Other accessories	
InteGrade engine lock inline	929000643713
InteGrade connector	929000959106
InteGrade magnet for M style profile	929000871413
InteGrade rotational bracket	929000874613

RDL track system	
RDL track	
RDL track 1800mm gr	929002113606
RDL track 1200mm gr	929002113706
RDL track 600mm gr	929002113806
Power cables - to connect the RDL track to the driver	
InteGrade track powercable 1.5m gr	929002113906
InteGrade track powercable 1.5m gr angle	929002114006
Track cables - to connect the engines to the RDL track	
InteGrade track cable M 0.7m gr angle	929002114106
InteGrade track cable 0.7m gr angle	929002114206
InteGrade track cable 0.3m transp angle	929002114306
InteGrade track cable 0.4m transp angle	929002114406
InteGrade track cable 0.5m transp angle	929002114506


* gr = Gray, M = Magnetic, transp = Transparent

Philips InteGrade LED products

InteGrade LED system gen 3 (standard color range)

InteGrade LED engines have been designed to match the most common application lengths, reducing the number of components needed per installation; yet maintaining the outstanding flexibility that its modular approach offers, enabling the creation of odd size lighting solutions to match every project specification. Thanks to a range of engine lengths, fixtures, accessories like mounting profiles, mounting clips, power cables, and Philips Constant Voltage LED drivers the InteGrade LED system gen 3 offers maximum design flexibility and plug-and-play simplicity to enable a vast variety of innovative systems with style, modernity and functionality according to the needs of the stores.


For shelf lighting InteGrade engine value gen 3 Product specification



Product name	Power consumption	Lumen	Color Rendering Index	Correlated Color Temperature*	Product code
	W, typical ± 20%	lm, typical ± 20%	CRI, min	K	(12NC)
InteGrade engine Va 140mm 930 G3	0,9	85	90	3000	929001574606
InteGrade engine Va 575mm 930 G3	3,9	380	90	3000	929001574706
InteGrade engine Va 855mm 930 G3	5,7	550	90	3000	929001574806
InteGrade engine Va 1150mm 930 G3	7,8	760	90	3000	929001574906
InteGrade engine Va 140mm 935 G3	0,8	80	90	3500	929001641006
InteGrade engine Va 575mm 935 G3	3,6	355	90	3500	929001641106
InteGrade engine Va 855mm 935 G3	5,2	510	90	3500	929001641206
InteGrade engine Va 1150mm 935 G3	7,2	710	90	3500	929001641306
InteGrade engine Va 140mm 940 G3	0,9	90	90	4000	929001575006
InteGrade engine Va 575mm 940 G3	3,9	420	90	4000	929001575106
InteGrade engine Va 855mm 940 G3	5,7	600	90	4000	929001575206
InteGrade engine Va 1150mm 940 G3	7,8	840	90	4000	929001575306
InteGrade engine Va 140mm 956 G3	1,0	105	90	5600	929001617906
InteGrade engine Va 575mm 956 G3	3,9	420	90	5600	929001618006
InteGrade engine Va 855mm 956 G3	5,8	630	90	5600	929001618106
InteGrade engine Va 1150mm 956 G3	7,8	840	90	5600	929001618206
InteGrade engine Va 140mm WWR G3	0,7	70	90		929001575406
InteGrade engine Va 575mm WWR G3	3,2	310	90		929001575506
InteGrade engine Va 855mm WWR G3	4,7	450	90		929001575606
InteGrade engine Va 1150mm WWR G3	6,4	620	90		929001575706
InteGrade engine Va 855mm XR G3	5	380	80		929001680106
InteGrade engine Va 1150mm XR G3	6,6	520	80		929001680206

* Correlated color temperature within 5 SDCM range


InteGrade engine vision gen 3 Product specification



Product name	Power consumption	Lumen	Color Rendering Index	Correlated Color Temperature*	Product code
	W, typical ± 20%	lm, typical ± 20%	CRI, min	K	(12NC)
InteGrade engine Vi 140mm 930 G3	1,7	170	90	3000	929001575806
InteGrade engine Vi 575mm 930 G3	7,3	750	90	3000	929001575906
InteGrade engine Vi 855mm 930 G3	10,7	1090	90	3000	929001576006
InteGrade engine Vi 1150mm 930 G3	14,6	1500	90	3000	929001576106
InteGrade engine Vi 140mm 935 G3	1,6	155	90	3500	929001641406
InteGrade engine Vi 575mm 935 G3	6,9	680	90	3500	929001641506
InteGrade engine Vi 855mm 935 G3	10,1	990	90	3500	929001641606
InteGrade engine Vi 1150mm 935 G3	13,8	1365	90	3500	929001641706
InteGrade engine Vi 140mm 940 G3	1,7	180	90	4000	929001576206
InteGrade engine Vi 575mm 940 G3	7,3	800	90	4000	929001576306
InteGrade engine Vi 855mm 940 G3	10,7	1160	90	4000	929001576406
InteGrade engine Vi 1150mm 940 G3	14,6	1600	90	4000	929001576506
InteGrade engine Vi 140mm 956 G3	1,9	200	90	5600	929001618306
InteGrade engine Vi 575mm 956 G3	7,4	800	90	5600	929001618406
InteGrade engine Vi 855mm 956 G3	11,1	1200	90	5600	929001618506
InteGrade engine Vi 1150mm 956 G3	14,9	1600	90	5600	929001618606
InteGrade engine Vi 140mm WWR G3	1,5	150	90		929001576606
InteGrade engine Vi 575mm WWR G3	6,6	650	90		929001576706
InteGrade engine Vi 855mm WWR G3	9,7	950	90		929001576806
InteGrade engine Vi 1150mm WWR G3	13,2	1300	90		929001576906
InteGrade engine Vi 855mm XR G3	9,8	790	80		929001494906
InteGrade engine Vi 1150mm XR G3	13,4	1060	80		929001495006

* Correlated color temperature within 5 SDCM range

For canopy lighting InteGrade engine uniform beam value gen 3 Product specification



Product name	Power consumption	Lumen	Color Rendering Index	Correlated Color Temperature*	Product code
	W, typical ± 20%	lm, typical ± 20%	CRI, min	K	(12NC)
InteGrade engine UB Va 855mm 930 G3	9,4	890	90	3000	929001603706
InteGrade engine UB Va 1150mm 930 G3	13	1200	90	3000	929001603806
InteGrade engine UB Va 855mm 940 G3	9,4	970	90	4000	929001603906
InteGrade engine UB Va 1150mm 940 G3	13	1300	90	4000	929001604006
InteGrade engine UB Va 855mm WWR G3	7,9	700	90		929001604106
InteGrade engine UB Va 1150mm WWR G3	11	900	90		929001604206

* Correlated color temperature within 5 SDCM range