



# Pharos CPE Series

Dedicated Long-Range Outdoor  
Wireless Networking Solution

CPE210 / CPE220 / CPE510 / CPE605 / CPE610 / CPE710

## Highlights

- Selectable bandwidth of 20/40/80 MHz for CPE710 and 5/10/20/40 MHz for other models
- Adjustable transmission power by 1 dBm
- Broad operating frequency channels ensure less wireless interference
- Passive PoE Adapter supports up to 60 meter<sup>1</sup> (200 feet) Power over Ethernet deployment
- TP-Link Pharos MAXtream<sup>2</sup> (Time-Division-Multiple-Access) technology improves product throughput, capacity and latency performance, ideal for PtMP applications.
- Centralized Management System – Pharos Control



<sup>1</sup> Power supply distances are based on test results under normal usage conditions. Actual power supply distance will vary as a result of 1) AP status, including transmit power, connected devices and network traffic and 2) cable properties, including type and texture.

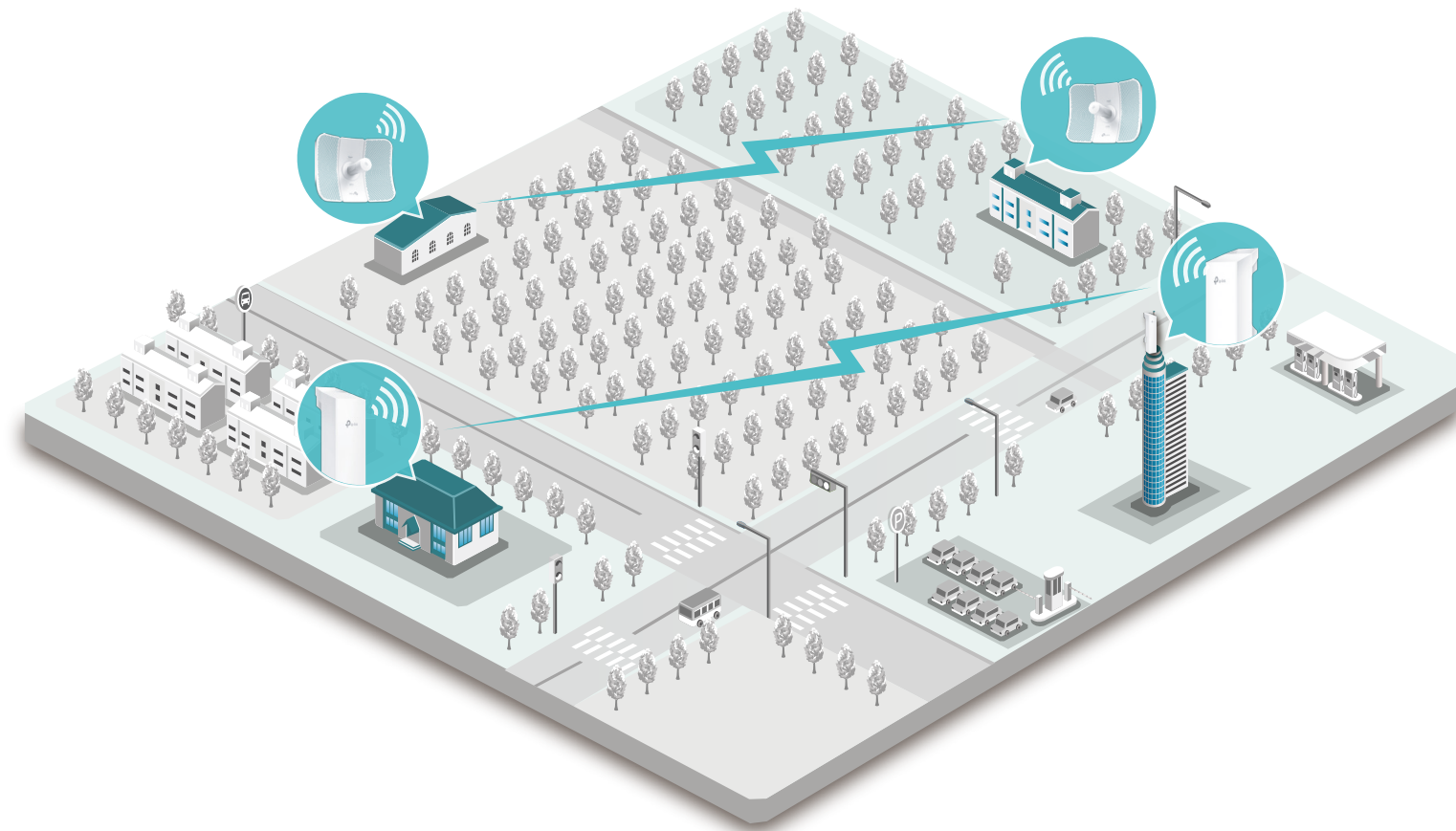
<sup>2</sup> CPE210 / CPE220 / CPE510 / CPE605 / CPE610 supports Maxtream.

# Typical Application

TP-Link's Outdoor CPE is dedicated to reliable solutions for outdoor wireless networking applications. With its centralized management application, it is flexible and ideal for Point-to-Point and Point-to-Multipoint applications.

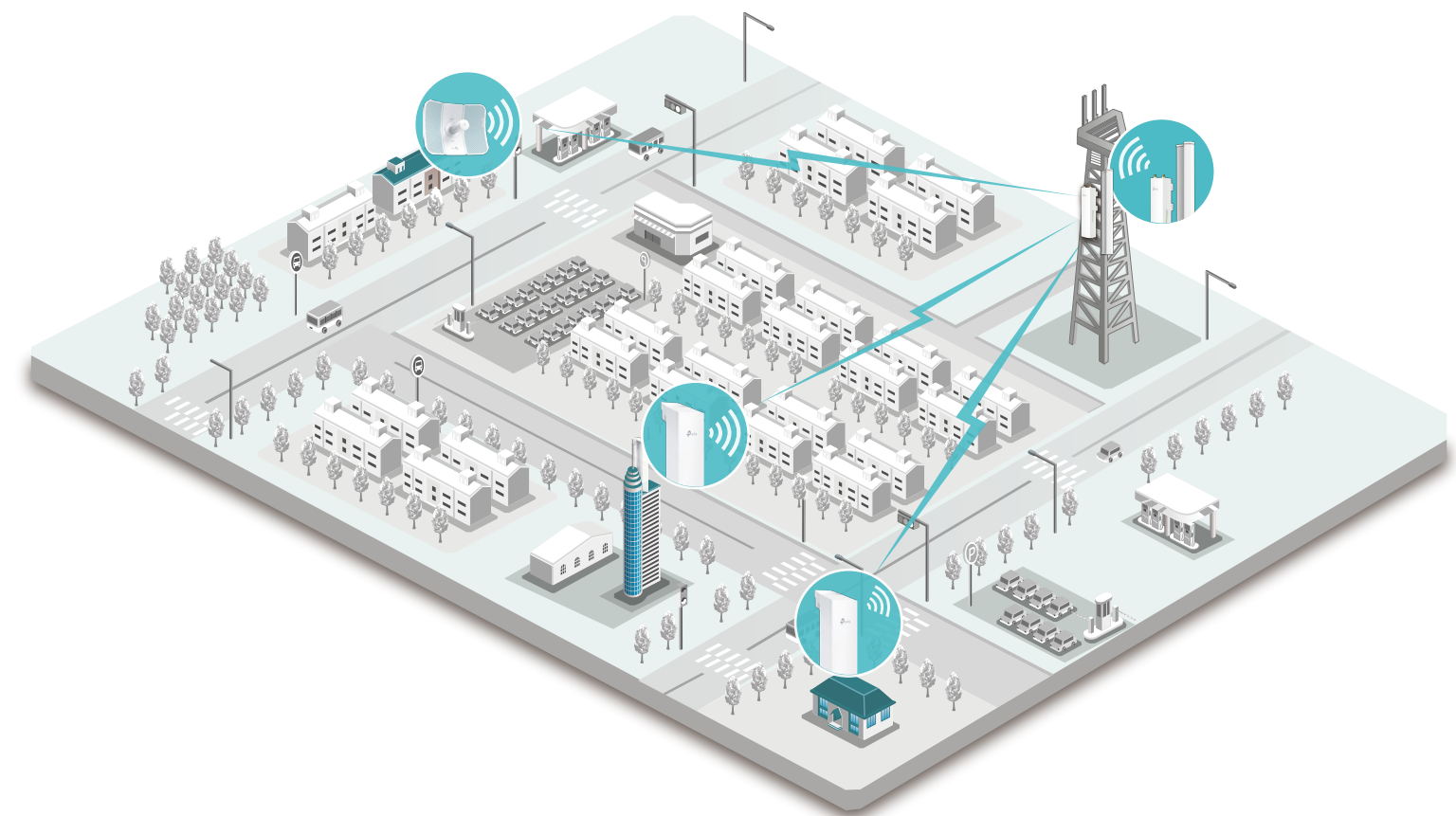
## Long-distance Wireless Connection

Using two CPEs to build a long-distance Point-to-Point wireless connection.



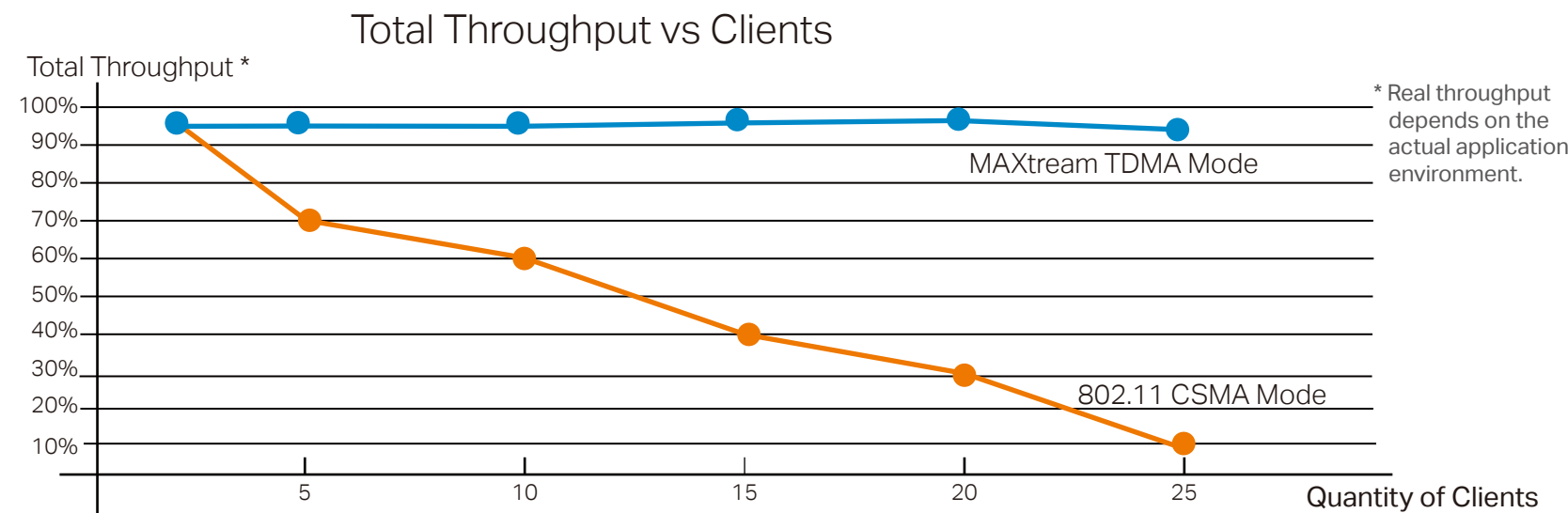
## Large-area Wireless Coverage

Using Base Station combined with Sector Antenna as the Access Point at the central station, and several CPEs as client to build a Point-to-Multipoint coverage.



# TP-Link MAXtream TDMA Technology

As network scale increases, wireless competition and collisions among outdoor devices will be so fierce that the real throughput of the network will drop, resulting in a serious impact on end-user experience, to mitigate these effects, TP-Link's Pharos series uses MAXtream<sup>3</sup> TDMA Technology.



<sup>3</sup> CPE210 / CPE220 / CPE510 / CPE605 / CPE610 supports Maxtream.

# PharOS

User-friendly web-based management system allows professionals to do more specific configurations.

# Pharos Control – Centralized Management System

Pharos also comes equipped with centralized management software that helps users easily manage all the devices in their network from a single PC - Pharos Control. Functions like device discovery, status monitoring, firmware upgrading, and network maintenance can be managed using Pharos Control.

Device name	Status	Mode	SSID	Root AP SSID	IP address
CPE210	MANAGED	0	AMY_C2		192.168.1.122
CPE510	UNMANAGED	0	APP_GUEST_C9		192.168.1.124
CPE510-2	MANAGED	0	APP_842N		192.168.1.124
CPE210-1	UNMANAGED	0	RE_MONILE4	AP500-C2	192.168.1.126
CBS779	MANAGED	0	AP500	AP1000-SD	192.168.1.124