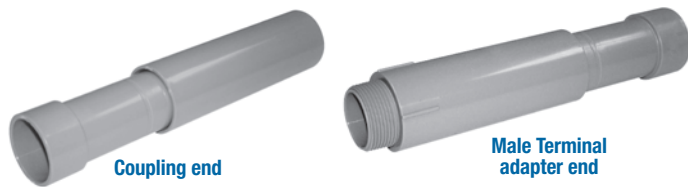


Fittings and Accessories

Expansion Fittings*

E945 Series expansion fittings are designed to compensate for length changes due to temperature variations in exposed conduit runs.

- Exclusive Molded in Mid-point indicator on the piston
- Exclusive 2 in. Expansion Fitting with an 8 in. travel distance
- Two-piece molded design with lubricated seals for easier movement for the life of the product
- Ridges on the fitting for easier installation (Sizes 2 in. through 6 in. only)
- Male terminal Adapter End design (1/2 in. – 2 in. NPT Threads and 2-1/2 in. – 6 in. NPSC Threads)
- Two O-Rings to prevent leakage
- Can be installed vertically or horizontally



| Coupling End Cat. No. | Male Terminal Adapter End Cat. No. | Size (in.) | Std. Ctn. Qty. | Travel Length (in.) |
|-----------------------|------------------------------------|------------|----------------|---------------------|
| E945D | E945DX | 1/2 | 20 | 4 |
| E945E | E945EX | 3/4 | 15 | 4 |
| E945F | E945FX | 1 | 10 | 4 |
| E945G | E945GX | 1-1/4 | 5 | 4 |
| E945H | E945HX | 1-1/2 | 5 | 4 |
| E945J | E945JX | 2 | 15 | 8 |
| E945K | E945KX | 2-1/2 | 10 | 8 |
| E945L | E945LX | 3 | 10 | 8 |
| E945M | E945MX | 3-1/2 | 5 | 8 |
| E945N | E945NX | 4 | 5 | 8 |
| E945P | E945PX | 5 | 1 | 8 |
| E945R | E945RX | 6 | 1 | 8 |

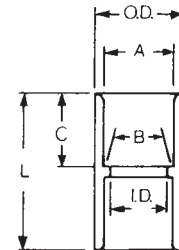
* Please refer to page I21 for additional information.

Standard Couplings

All socket fittings should be attached using Carlton solvent cement. Using Carlton fittings with Carlton nonmetallic conduit insures system integrity.



Socket type for joining nonmetallic conduit.



| Cat. No. | Size (in.) | Std. Ctn. Qty. | A | | I.D. (in.) | O.D. (in.) | C | L |
|-------------|------------|----------------|---------------|-------|------------|------------|---------|---------|
| | | | Typical (in.) | | | | | |
| CE940DR-CTN | 1/2 | 75 | 0.852 | 0.836 | 0.728 | 1-7/64 | 11-16 | 1-1/2 |
| CE940ER-CTN | 3/4 | 45 | 1.064 | 1.046 | 0.840 | 1-5/16 | 3/4 | 1-5/8 |
| CE940F-UPC | 1 | 50 | 1.330 | 1.310 | 1.210 | 1-5/8 | 15/16 | 2 |
| E940G | 1-1/4 | 30 | 1.677 | 1.655 | 1.535 | 1-63/64 | 1 | 2-1/8 |
| E940H | 1-1/2 | 25 | 1.918 | 1.894 | 1.755 | 2-15/64 | 1-1/8 | 2-3/8 |
| E940J | 2 | 30 | 2.393 | 2.369 | 2.190 | 2-47/64 | 1-3/16 | 2-1/2 |
| E940K | 2-1/2 | 20 | 2.890 | 2.868 | 2.688 | 3-5/16 | 1-33/64 | 3-3/16 |
| E940L | 3 | 25 | 3.515 | 3.492 | 3.375 | 3-31/32 | 1-3/4 | 3-13/32 |
| E940M | 3-1/2 | 20 | 4.015 | 3.992 | 3.780 | 4-9/16 | 1-3/4 | 3-5/8 |
| E940N | 4 | 15 | 4.515 | 4.491 | 4.265 | 5-3/32 | 1-25/32 | 3-3/4 |
| E940P | 5 | 8 | 5.593 | 5.553 | 5.097 | 6-1/4 | 1-5/16 | 4-1/16 |
| E940R | 6 | 5 | 6.658 | 6.614 | 6.115 | 7-1/2 | 2-3/16 | 4-5/8 |

Short Expansion Couplings*

(Expands to a maximum of 2 in.)



| Cat. No. | Size (in.) | Std. Ctn. Qty. |
|----------|------------|----------------|
| E955D | 1/2 | 40 |
| E955E | 3/4 | 40 |
| E955F | 1 | 25 |
| E955G | 1-1/4 | 15 |
| E955H | 1-1/2 | 10 |
| E955J | 2 | 6 |

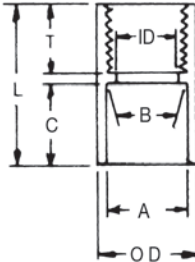
* Please refer to page I21 for additional information.

Fittings and Accessories

Female Adapters



For adapting nonmetallic conduits to threaded fittings, metallic systems. Female threads on one end, socket end on other.

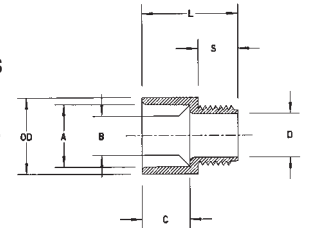


| Cat. No. | Size (in.) | Std. Ctn. Qty. | A | B | Min. I.D. (in.) | Max. O.D. (in.) | C | T | L |
|----------|------------|----------------|---------------|-------|-----------------|-----------------|---------|--------|---------|
| | | | Typical (in.) | | | | | | |
| E942D | 1/2 | 150 | 0.852 | 0.836 | 0.620 | 1-7/64 | 11/16 | 3/4 | 1-9/16 |
| E942E | 3/4 | 100 | 1.064 | 1.046 | 0.822 | 1-5/16 | 13/16 | 3/4 | 1-5/8 |
| E942F | 1 | 50 | 1.330 | 1.310 | 1.046 | 1-5/8 | 15/16 | 7/8 | 1-15/16 |
| E942G | 1-1/4 | 30 | 1.677 | 1.655 | 1.377 | 1-63/64 | 1 | 7/8 | 2 |
| E942H | 1-1/2 | 25 | 1.918 | 1.894 | 1.607 | 2-5/32 | 1-1/8 | 7/8 | 2-7/32 |
| E942J | 2 | 30 | 2.393 | 2.369 | 2.064 | 2-47/64 | 1-3/16 | 1 | 2-5/16 |
| E942K | 2-1/2 | 20 | 2.890 | 2.868 | 2.450 | 3-11/32 | 1-5/8 | 1-1/8 | 2-15/16 |
| E942L | 3 | 25 | 3.515 | 3.492 | 3.000 | 3-31/32 | 1-3/4 | 1-1/8 | 3-1/16 |
| E942M | 3-1/2 | 20 | 4.015 | 3.992 | 3.500 | 4-1/2 | 1-7/8 | 1-1/8 | 3-1/4 |
| E942N | 4 | 15 | 4.515 | 4.491 | 4.000 | 5-1/64 | 1-3/4 | 1-1/16 | 3-13/64 |
| E942P | 5 | 8 | 5.593 | 5.553 | 5.047 | 6-1/4 | 1-15/16 | 1-1/16 | 3-3/16 |
| E942R | 6 | 6 | 6.658 | 6.614 | 6.055 | 7-1/4 | 2-1/8 | 1-1/16 | 3-3/8 |

Male Terminal Adapters



For adapting nonmetallic conduits to boxes threaded fittings, metallic systems. Male threads on one end, socket end on other.

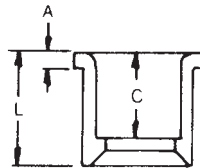


| Cat. No. | Size (in.) | Std. Ctn. Qty. | A | B | Min. D (in.) | Max. O.D. (in.) | C | S | L |
|----------|------------|----------------|---------------|-------|--------------|-----------------|-------|-------|-------|
| | | | Typical (in.) | | | | | | |
| E943D | 1/2 | 150 | 0.852 | 0.836 | 0.594 | 1.042 | 0.652 | 0.545 | 1.310 |
| E943E | 3/4 | 100 | 1.064 | 1.046 | 0.793 | 1.290 | 0.809 | 0.553 | 1.470 |
| E943F | 1 | 50 | 1.330 | 1.310 | 1.025 | 1.580 | 0.965 | 0.812 | 1.902 |
| E943G | 1-1/4 | 30 | 1.677 | 1.655 | 1.345 | 1.973 | 1.208 | 0.816 | 1.986 |
| E943H | 1-1/2 | 25 | 1.918 | 1.894 | 1.574 | 2.188 | 1.155 | 0.802 | 2.105 |
| E943J | 2 | 30 | 2.393 | 2.369 | 1.998 | 2.713 | 1.145 | 0.825 | 2.093 |
| E943K | 2-1/2 | 20 | 2.890 | 2.868 | 2.400 | 3.290 | 1.490 | 0.812 | 2.480 |
| E943L | 3 | 25 | 3.515 | 3.492 | 2.989 | 3.965 | 1.643 | 0.797 | 2.660 |
| E943M | 3-1/2 | 20 | 4.015 | 3.992 | 3.405 | 4.515 | 1.720 | 0.802 | 2.740 |
| E943N | 4 | 15 | 4.515 | 4.491 | 3.895 | 5.065 | 1.788 | 0.733 | 2.830 |
| E943P | 5 | 8 | 5.593 | 5.553 | 4.900 | 6.104 | 1.935 | 0.990 | 3.200 |
| E943R | 6 | 6 | 6.658 | 6.614 | 5.900 | 7.288 | 2.128 | 0.985 | 3.410 |

Reducer Bushings



For connecting different sizes of conduit. Bell x Spigot.

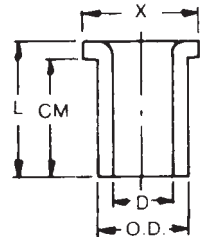


| Cat. No. | Size (in.) | Std. Ctn. Qty. | L | A | C |
|------------|---------------|----------------|---------------|-------|---------|
| | | | Typical (in.) | | |
| E950ED | 3/4 x 1/2 | 100 | 1-5/32 | 13/64 | 1-1/32 |
| E950FD-CAR | 1 x 1/2 | 25 | 1-11/32 | 3/16 | 57/64 |
| E950FE | 1 x 3/4 | 100 | 1-11/32 | 3/16 | 1-1/64 |
| E950GE-CAR | 1-1/4 x 3/4 | 10 | 1-15/32 | 3/16 | 1-1/64 |
| E950GF | 1-1/4 x 1 | 50 | 1-15/32 | 3/16 | 1-9/64 |
| E950HF-CAR | 1-1/2 x 1 | 10 | 1-19/32 | 3/16 | 1-9/64 |
| E950HG-CAR | 1-1/2 x 1-1/4 | 10 | 1-19/32 | 3/16 | 1-17/64 |
| E950JG-CAR | 2 x 1-1/4 | 10 | 1-3/4 | 7/32 | 1-17/64 |
| E950JH-CAR | 2 x 1-1/2 | 10 | 1-3/4 | 7/32 | 1-25/64 |
| E950KJ-CAR | 2-1/2 x 2 | 10 | 2-5/32 | 3/8 | 1-27/64 |
| E950LJ-CAR | 3 x 2 | 10 | 2-1/8 | 1/4 | 1-7/8 |
| E950LK | 3 x 2-1/2 | 25 | 1-15/16 | 1/4 | 1-11/16 |
| E950NL | 4 x 3 | 25 | 2-3/4 | 5/16 | 1-15/16 |

Box Adapters for Enclosures



Adapts nonmetallic conduit to all electrical enclosures by inserting adapter through knockout and cementing into Carlton couplings.



| Cat. No. | Size (in.) | Std. Ctn. Qty. | Min. D (in.) | O.D. Typical (in.) | Max. X (in.) | CM | L |
|----------|------------|----------------|--------------|--------------------|--------------|---------------|---------|
| | | | | | | Typical (in.) | |
| E996D | 1/2 | 100 | 0.662 | 0.840 | 1-7/64 | 23/32 | 27/32 |
| E996E | 3/4 | 100 | 0.824 | 1.050 | 1-21/64 | 25/32 | 29/32 |
| E996F | 1 | 100 | 1.049 | 1.315 | 1-5/8 | 61/64 | 1-3/32 |
| E996G | 1-1/4 | 50 | 1.380 | 1.660 | 1-31/32 | 1-1/16 | 1-1/4 |
| E996H | 1-1/2 | 50 | 1.610 | 1.900 | 2-13/64 | 1-3/16 | 1-3/8 |
| E996J | 2 | 25 | 2.067 | 2.375 | 2-29/32 | 1-1/4 | 1-7/16 |
| E996K | 2-1/2 | 15 | 2.469 | 2.875 | 3-7/16 | 1-7/8 | 1-15/16 |
| E996L | 3 | 20 | 3.068 | 3.500 | 4-1/8 | 2 | 2-1/16 |
| E996N | 4 | 10 | 4.026 | 4.500 | 5-1/8 | 2-1/2 | 2-1/4 |

Threaded Adapters



| Cat. No. | Size (in.) | Std. Ctn. Qty. |
|----------|------------|----------------|
| E9842D 1 | 1/2 | 25 |
| E9842E 2 | 3/4 | 25 |

1 Fits 3/4 in. sockets
2 Fits 1 in. sockets

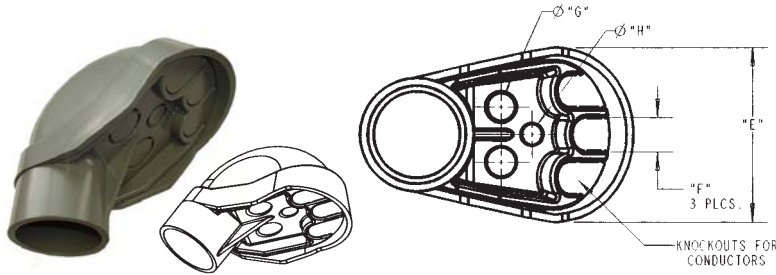
Plugs with Pull Tabs (Polyethylene)



| Cat. No. | Size (in.) | Std. Ctn. Qty. | Std. Ctn. Wt. (lb.) |
|----------|------------|----------------|---------------------|
| P258JT | 2 | 60 | 3 |
| P258LT | 3 | 30 | 3 |
| P258NT | 4 | 48 | 8 |
| P258PT | 5 | 30 | 6 |
| P258RT | 6 | 30 | 9 |

Fittings and Accessories

Service Entrance Caps



| Cat. No. | Size (in.) | Std. Ctn. Qty. | Dimensions (in.) | | | |
|-----------|------------|----------------|------------------|------|------|------|
| | | | E | F | G | H |
| E998D | 1/2 | 5 | 1.76 | 0.45 | 0.45 | — |
| E998E | 3/4 | 20 | 1.76 | 0.45 | 0.45 | — |
| E998F | 1 | 15 | 2.26 | 0.59 | 0.58 | — |
| E998G | 1-1/4 | 20 | 3.52 | 0.74 | 0.71 | 0.50 |
| E998H | 1-1/2 | 10 | 3.52 | 0.74 | 0.71 | 0.50 |
| E998J | 2 | 5 | 4.26 | 0.83 | 0.78 | 0.56 |
| E998K-UPC | 2-1/2 | 2 | 7.47 | 1.70 | 1.31 | 1.00 |
| E998L | 3 | 2 | 7.47 | 1.70 | 1.31 | 1.00 |
| E998N | 4 | 2 | 10.45 | 2.25 | 1.88 | 1.31 |

Meter Offset



| Cat. No. | Size (in.) | Std. Ctn. Qty. | Offset (in.) | A (in.) |
|----------|------------|----------------|--------------|---------|
| E995G | 1-1/4 | 15 | 0.758 | 4.230 |
| E995J | 2 | 8 | 0.684 | 4.270 |

Offset



| Cat. No. | Size (in.) | Std. Ctn. Qty. | Std. Ctn. Wt. (lb.) |
|----------|------------|----------------|---------------------|
| E994D | 1/2 | 25 | 3 |
| E994E | 3/4 | 25 | 3 |
| E994F | 1 | 50 | 12 |

End Caps



| Cat. No. | Size (in.) | Std. Ctn. Qty. | Std. Ctn. Wt. (lb.) |
|----------|------------|----------------|---------------------|
| E958D | 1/2 | 100 | 3 |
| E958E | 3/4 | 100 | 4 |
| E958F | 1 | 75 | 5 |
| E958G | 1-1/4 | 40 | 4 |
| E958H | 1-1/2 | 30 | 4 |
| E958J | 2 | 25 | 5 |
| E958K | 2-1/2 | 10 | 4 |
| E958L | 3 | 10 | 5 |
| E958N | 4 | 5 | 17 |
| E958P | 5 | 5 | 11 |
| E958R | 6 | 5 | 13 |

End Bells



| Cat. No. | Size (in.) | Std. Ctn. Qty. | Std. Ctn. Wt. (lb.) |
|----------|------------|----------------|---------------------|
| E997F | 1 | 50 | 2.6 |
| E997G | 1-1/4 | 35 | 2.5 |
| E997H | 1-1/2 | 30 | 2.5 |
| E997J | 2 | 40 | 5.0 |
| E997K | 2-1/2 | 30 | 2 |
| E997L | 3 | 50 | 10 |
| E997M | 3-1/2 | 40 | 11 |
| E997N | 4 | 30 | 16 |
| E997P | 5 | 15 | 8 |
| E997R | 6 | 10 | 7 |
| E997T | 8 | 3 | 15 |

Meter Hubs



| Cat. No. | Size (in.) | Std. Ctn. Qty. | Std. Ctn. Wt. (lb.) |
|-----------|------------|----------------|---------------------|
| E991G | 1-1/4 | 20 | 3.8 |
| E991G-UPC | 1-1/4 | 12 | 2.3 |
| E991H | 1-1/2 | 25 | 8.0 |
| E991J | 2 | 6 | 1.0 |
| E991J-UPC | 2 | 12 | 2.0 |

Fittings and Accessories

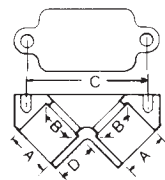
Flat Sealing Washer

Where a waterproof termination is required into any enclosure (metallic or nonmetallic), install the neoprene washer over the threads of a terminal adapter before inserting into the enclosure. Use a standard locknut or threaded bushing to secure the assembly.



| Cat. No. | Size (in.) | Std. Ctn. Qty. |
|----------|------------|----------------|
| E943DW | 1/2 | 125 |
| E943EW | 3/4 | 125 |
| E943FW | 1 | 100 |
| E943GW | 1-1/4 | 50 |
| E943HW | 1-1/2 | 50 |
| E943JW | 2 | 25 |

Access Pull Elbows

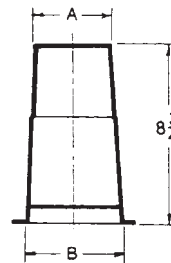


| Cat. No. | Size (in.) | Std. Ctn. Qty. | Typical (in.) | | | |
|------------|------------|----------------|---------------|-------|-------|-------|
| | | | A | B | C | D |
| E990D | 1/2 | 75 | 0.852 | 0.836 | 2.187 | 0.718 |
| E990DR-CAR | 1/2 | 25 | 0.852 | 0.836 | 2.187 | 0.718 |
| E990E | 3/4 | 50 | 1.064 | 1.046 | 2.531 | 0.781 |

Gasket included

Holform™ Concrete Sleeves

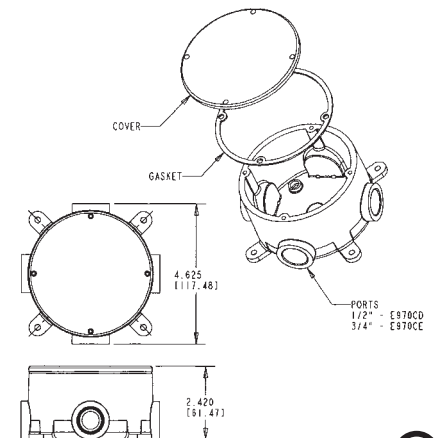
HOLFORM™ nonmetallic concrete sleeve forms are the easy way to form holes in concrete. They install in seconds with nails, screws or staples and are easily removed. Concrete will not adhere to them. HOLFORM™ are adjustable to any slab thickness. (Not CSA applicable)



| Cat. No. | Min. O.D. A (in.) | B (in.) | Std. Ctn. Qty. | Std. Ctn. Wt. (lb.) |
|----------|-------------------|---------|----------------|---------------------|
| E92CSH | 1-1/2 | 1-3/4 | 20 | 3 |
| E92CSJ | 2 | 2-13/32 | 25 | 6 |
| E92CSL | 3 | 3-13/32 | 25 | 8 |
| E92CSN | 4 | 4-13/32 | 18 | 8 |
| E92CSP | 5 | 5-13/32 | 15 | 8 |
| E92CSR | 6 | 6-13/32 | 12 | 8 |

Conduit Bodies Type X with Cover

Four knockout type socket openings, 90° spacing. Available with 1/2 in. or 3/4 in. socket outlets. Includes cover and gasket.



| Cat. No. | Size (in.) | Vol. Cu. (in.) | Std. Ctn. Qty. |
|----------|------------|----------------|----------------|
| CE970CDE | 1/2 | 15.16 | 15 |
| E970CE | 3/4 | 15.16 | 15 |

Supplied with 4 stainless steel cover screws. Diameter 4-1/8 in., Thickness 1/4 in. Not designed for use with wiring devices or light fixtures.