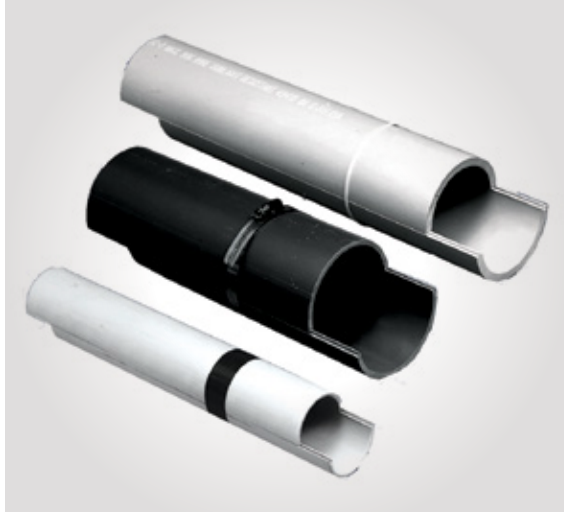


Split duct

Product overview

01 The fast and easy method of installing duct around existing cable for repair and temporary installations.



01

Split duct is the fast and easy way to repair broken ductwork without the costly cutting and resplicing of your conductors.

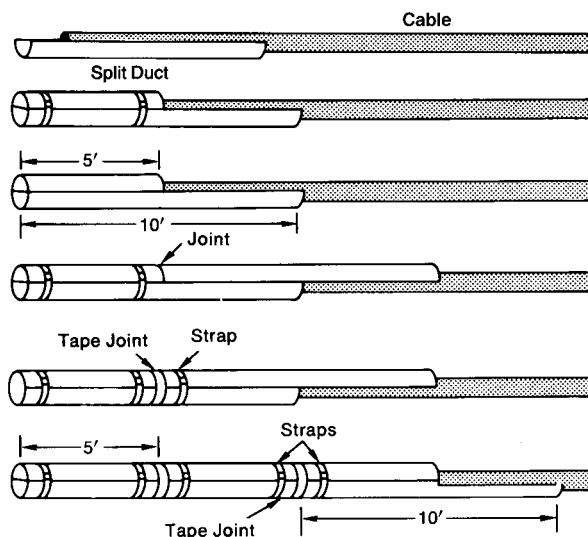
Our unique tongue-and-groove design leads the industry in providing a strong, rigid solution for duct repair situations.

The interlocking design allows the split duct sections to be staggered and butted together. Joints may be sealed with tape and reinforced with plastic or metallic straps to produce a rigid, stable unit.

Manufactured from a compound designed specifically for power and telecommunications applications, split duct exhibits superior impact strength.

Available in 2 in. through 6 in. diameters, this product line also contains couplings and sweeps necessary to complete the system.

Verify with local inspection authorities before using.




Recommended installation procedure

1. Place one 10-foot split duct section under cable.
2. In order to stagger joints, saw another section in half (about 5 feet long).
3. Place 5-foot section over cable and snap the two sections together.
4. Place strap about one foot from the end and another strap about a foot from the joint where the ends of the top sections will butt.
5. Place another 10-foot split duct section over the open half of the bottom section, butt the ends tightly together and snap the sections together.
6. Place a length of tape around both sections of the split duct to cover the butted joint.
7. Place a strap about one foot beyond the taped joint.
8. Lay another length of split duct underneath cable, butt together, tape the butted joint and strap one foot on each side of the joint.
9. Repeat procedure.


Split duct

Split duct




Cat. no.	Size (in.)	Std. ctn. qty.	Std. ctn. wt. (lb)	O.D. (in.)
Schedule 40				
49011SD-010	2	700	523	2.375
49012SD-010	2½	460	562	2.875
49013SD-010	3	500	802	3.500
49014SD-010	3½	290	560	4.000
49015SD-010	4	290	662	4.500
49016SD-010	5	130	718	5.563
49017SD-010	6	130	523	6.625
Schedule 80				
49411SD-010	2	700	702	2.375
49415SD-010	4	290	890	4.500
C duct				
68515SD-010	4	320	614	4.350

Split sleeve coupling



Cat. no.	Size (in.)	Length (in.)	Split	Std. ctn. qty.	Std. ctn. wt. (lb)
Schedule 40 and 80					
E200JS6	2	6	1	25	6.1
E200KS7	2½	7	1	25	21
E200LS7	3	7	1	25	15.5
E200LSS	3	6½	1	25	10
E200MS8	3½	8	1	25	41.2
E200NS8	4	8	1	15	16
E200NSS	4	6	1	25	17
E200PS8	5	8	1	15	25
E200PS9	5	9	1	8	16.4
E200RS1	6	10	1	6	24.2
C duct					
E900NS8 (white)	4	8	1	15	19
E900NSW (white)	4	6	1	25	22

Split sleeve sweeps



Cat. no.	Nom. size (in.)	Radius (in.)	Std. ctn. qty.	Std. ctn. wt. (lb)
45° Sweep				
UA7DJSD	2	24	1	1.4
UA7FJSD	2	36	1	2.1
UA7FLSD	3	36	1	4.7
UA7HJSD	2	48	1	2.7
UA7HLSD	3	48	1	6.1
UA7IJSD	2	60	1	3.2
UA7ILSD	3	60	1	7.2
UA7INSD	4	60	1	10.2
22½° Sweep				
UA5INSD	4	60	1	6.1
11¼° Sweep				
UA3IJSD	2	60	1	1.0
UA3ILSD	3	60	1	3.6
UA3INSD	4	60	1	5.1

Two 45° elbows may be segmented for 90°.