

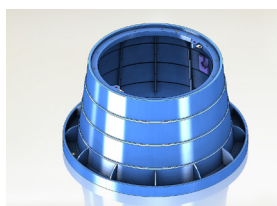
## Valmont® Structures **in-ground enclosures**

- **Superior Design** - P. Eng and In-Ground Enclosure CSA steering committee member endorsed
- **Stock-on-Hand** - Ready for delivery
- **Domestic Primary Supply Chain** - Proven record of durability and quality for 20+ years
- **Lightweight** - Ease of transport and installation

ORDERING INFO  
or QUESTIONS?  
SEE PAGE 6

## Large Round

CAT #	ITEM	TOP DIMENSIONS	BOTTOM DIMENSIONS	HEIGHT	WEIGHT
		IN (MM)	IN (MM)	IN (MM)	LBS (KG)
25010	BOX	20.87 (530)	28.7 (730)	15.11 (384)	17 (7.7)
25300	LID - PLASTIC	19.69 (500)			6 (2.7)
25310	LID - STEEL	19.69 (500)			34.25 (15.6)
25800	DRAIN PLATE	19.69 (500)			4.75 (2.16)



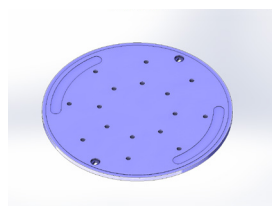
25010



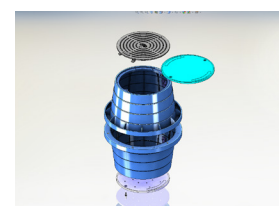
25300



25310



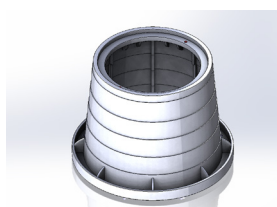
25800



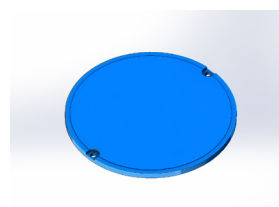
LARGE ROUND  
CONFIGURATION - TYPE 10

## Small Round

CAT #	ITEM	TOP DIMENSIONS	BOTTOM DIMENSIONS	HEIGHT	WEIGHT
		IN (MM)	IN (MM)	IN (MM)	LBS (KG)
25020	BOX	14.65 (372)	20 (508)	15.16 (385)	10 (4.55)
25400	LID - PLASTIC	13.66 (347)			2.5 (1.14)
25410	LID - STEEL	13.66 (347)			15.75 (7.2)
25810	DRAIN PLATE	13.66 (347)			2 (0.91)



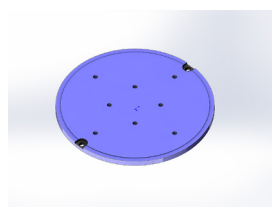
25020



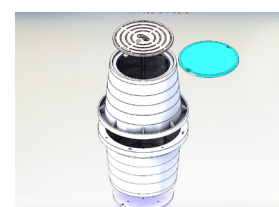
25400



25410



25810



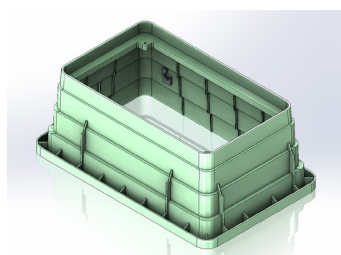
SMALL ROUND  
CONFIGURATION - TYPE 14

\*Round enclosures coupled with steel lids are suitable for off-roadway applications subject to occasional vehicular traffic. All round and rectangular enclosure and lid combinations are suitable for regular pedestrian traffic. Custom markings are available on all enclosure lids. Standard Terms & Conditions apply. One-year material and workmanship warranty included.

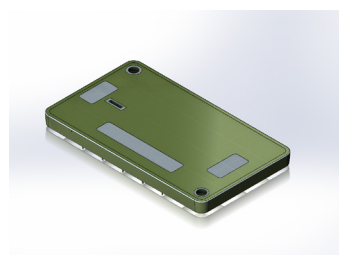
ORDERING INFO  
or QUESTIONS?  
SEE PAGE 6

## Large Rectangular

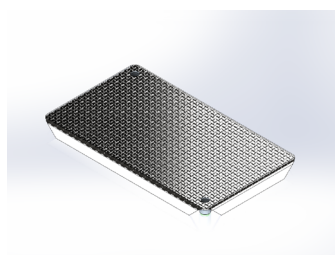
CAT #	ITEM	TOP DIMENSIONS	BOTTOM DIMENSIONS	HEIGHT	WEIGHT
		IN (MM)	IN (MM)	IN (MM)	LBS (KG)
25100	LARGE RECTANGULAR	31.6 X 18.5 (802 X 470)	37 X 24 (940 X 610)	15 (381)	20.74 (9.4)
25500	LID - PLASTIC	29.5 X 17.7 (750 X 450)			11.5 (5.2)
25510-04	LID - STEEL	30.3 X 17.3 (770 X 440)			40.5 (18.4)



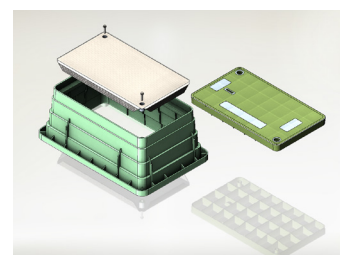
25100



25500



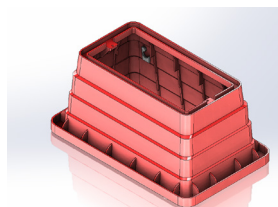
25510-04



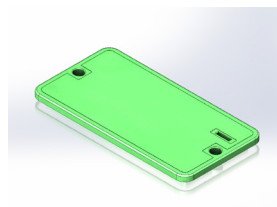
LARGE RECTANGULAR CONFIGURATION

## Medium Rectangular

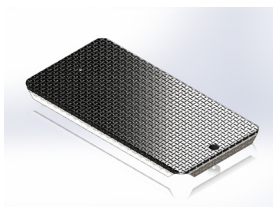
CAT #	ITEM	TOP DIMENSIONS	BOTTOM DIMENSIONS	HEIGHT	WEIGHT
		IN (MM)	IN (MM)	IN (MM)	LBS (KG)
25110	MEDIUM RECTANGULAR	26.6 X 14.6 (675 X 372)	34.45 X 22.6 (875 X 575)	15.16 (385)	21.5 (9.8)
25600	LID - PLASTIC	26.6 X 13.6 (675 X 345)			8 (2.7)
25610-04	LID - STEEL	26.3 X 13.8 (667 X 350)			23.25 (10.6)
25820	DRAIN PLATE	26.6 X 13.6 (675 X 345)			3.25 (1.42)



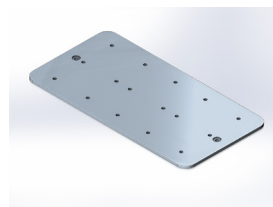
25110



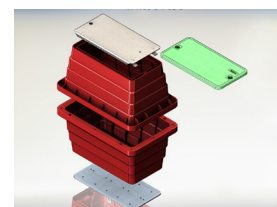
25600



25610-04



25820



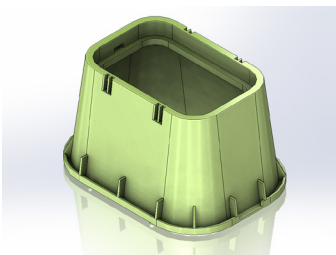
MEDIUM RECTANGULAR CONFIGURATION

\*Round enclosures coupled with steel lids are suitable for off-roadway applications subject to occasional vehicular traffic. All round and rectangular enclosure and lid combinations are suitable for regular pedestrian traffic. Custom markings are available on all enclosure lids. Standard Terms & Conditions apply. One-year material and workmanship warranty included.

ORDERING INFO  
or QUESTIONS?  
SEE PAGE 6

## Small Rectangular

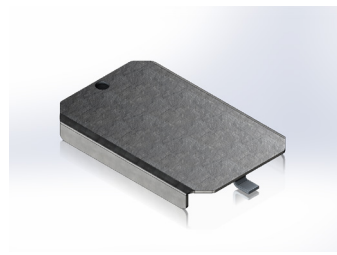
CAT #	ITEM	TOP DIMENSIONS	BOTTOM DIMENSIONS	HEIGHT	WEIGHT
		IN (MM)	IN (MM)	IN (MM)	LBS (KG)
25120	SMALL RECTANGULAR	17 X 11.75 (432 X 298)	21.2 X 15.75 (538 X 400)	12 (305)	7.5 (3.4)
25700	LID - PLASTIC	15.3 X 10.1 (389 X 257)			2.5 (1.14)
25710-04	LID - STEEL	15.2 X 9.9 (387 X 252)			10.75 (4.9)



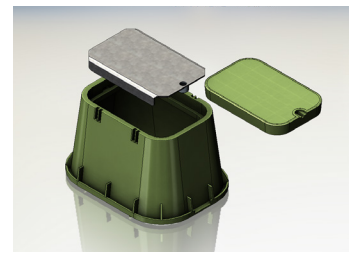
25120



25700



25710-04



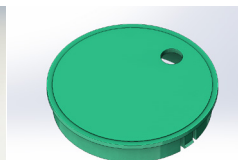
SMALL RECTANGULAR CONFIGURATION

## Splice Pits

CAT #	ITEM	TOP DIMENSIONS	BOTTOM DIMENSIONS	HEIGHT	WEIGHT
		IN (MM)	IN (MM)	IN (MM)	LBS (KG)
25200	LARGE	10.3 (262)	13.4 (340)	10 (254)	3.5 (1.6)
25210	SMALL	6.06 (154)	9.5 (240)	8.9 (226)	1.25 (0.6)



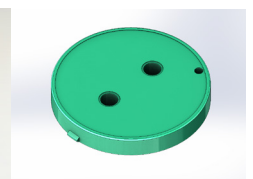
LARGE SPLICE PIT - 25200



25200



SMALL SPLICE PIT - 25210



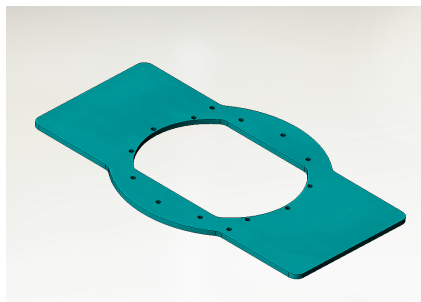
25210

\*Round enclosures coupled with steel lids are suitable for off-roadway applications subject to occasional vehicular traffic. All round and rectangular enclosure and lid combinations are suitable for regular pedestrian traffic. Custom markings are available on all enclosure lids.

Standard Terms & Conditions apply. One-year material and workmanship warranty included.

## Adapter Plate

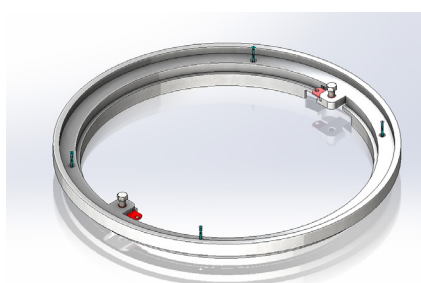
CAT #	ITEM	TOP DIMENSIONS	WEIGHT
		IN (MM)	LBS (KG)
25900	PLASTIC	34.25 X 21.3 (870 X 540)	7.5 (3.4)



ADAPTER PLATE

## Riser Ring

CAT #	ITEM	HEIGHT	OUTSIDE DIAMETER	INSIDE DIAMETER
		IN (MM)	IN (MM)	IN (MM)
25300-RING	PLASTIC RISER RING	1 (25)	21 (533)	17 3/4 (451)



RISER RING

\*Round enclosures coupled with steel lids are suitable for off-roadway applications subject to occasional vehicular traffic. All round and rectangular enclosure and lid combinations are suitable for regular pedestrian traffic. Custom markings are available on all enclosure lids. Standard Terms & Conditions apply. One-year material and workmanship warranty included.

**Contact us for additional information  
or to place an order!**

**ADDRESS**

7984 River Road  
Delta, BC V4G 1E3  
Canada

100 Ellis Dr.  
Barrie, ON, L4N 9B2  
Canada

**PHONE**

DELTA - 604.946.1256  
BARRIE - 705.721.1090  
STEINBACH - 204.346.9100

**EMAIL**

CustomerCareWCE@valmont.com

[valmontstructures.com](http://valmontstructures.com)

