

INSTALLATION, OPERATION & MAINTENANCE DATA SHEET

FOR

KFL SERIES LED LUMINAIRE FLOOD

Luminaires are designed to be installed in Class I, Division 2, Class II, Division 1, or Class I Zone 2 Hazardous locations.

CAUTION: Before installing luminaire, make sure luminaire complies with area classifications, failure to do so may result in bodily injury and/or property damage. Do not attempt installation until you are familiar with the following procedures. All installation must comply with the applicable local and/or National Electrical Code and be performed by a qualified electrician.

Make sure that the circuit is de-energized before starting installation or maintenance.

Verify that luminaire is grounded. Failure to ground will create electrical shock hazards, which can cause serious injury and or death.

NOTE- For Class I, Division 2 / Class II, Division 1 / Class I, Zone 2 Hazardous Locations, use rigid conduit.

Note: Due to the surge protection provided in the fixture to protect the internal electronics and LEDs, a branch circuit with the LED fixture may false fail a megohmmeter test (sometimes referred to as a megger test. If a megohmmeter test is required, the LED fixture should be removed from the branch circuit.

Note: Multiple fluorescent or LED fixtures attached to a single Ground Fault Circuit Interrupter (GFCI) may cause nuisance tripping of the GFCI. Regulatory agencies allow a small amount of leakage current because of the circuitry required to mitigate possible issues with electromagnetic compatibility (reference UL8750 and EN61347). The summation of these leakage currents from multiple fixtures may be enough to trip a GFCI.

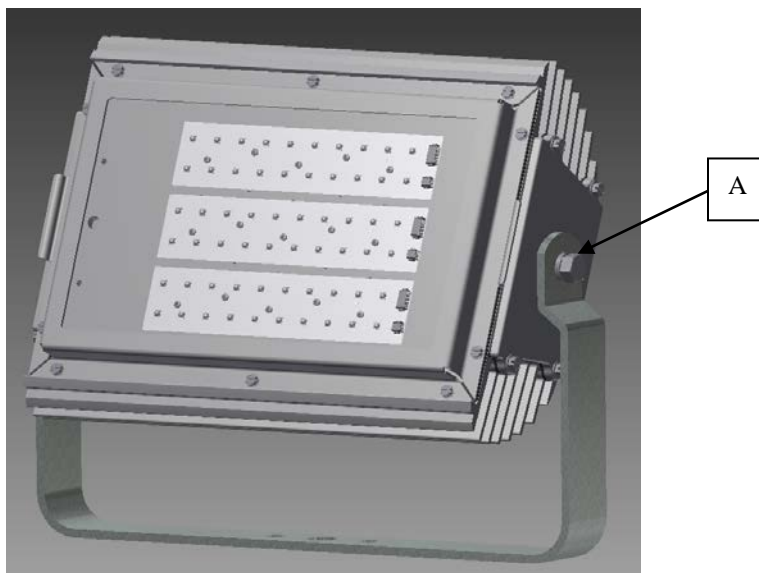


Figure 1

KFL Series Typical
Assembly

INSTALLATION INSTRUCTIONS:

FLOOD LIGHT WITH YOKE MOUNT: (See Figure 1)

1. For convenience, install the yoke bracket on the trunnion before mounting the structure.
2. Loosen bolts (A) - aim the floodlight to the desired spot.
3. Tighten both bolts (A) securely.
4. Fasten the yoke bracket to the mounting location using ½" bolts/fasteners.

IMPORTANT NOTE:

Turn off electricity to circuit at main fuse or at circuit breaker.

1. Run supply wire to fixture through applicable hub (B) on back of fixture. Make watertight joint using sealing fittings at threaded hub at the back of fixture. The hub is threaded ¾"-14NPT.
2. Loosen and remove all but one of the access door captive screws (C). Rotate access door (D) to allow for entry into fixture. See Figure 2 for more details.
3. **CAUTION** - Connection as described below requires the use of either insulated wire nuts or, as an alternate, a factory installed terminal block assembly. See below:

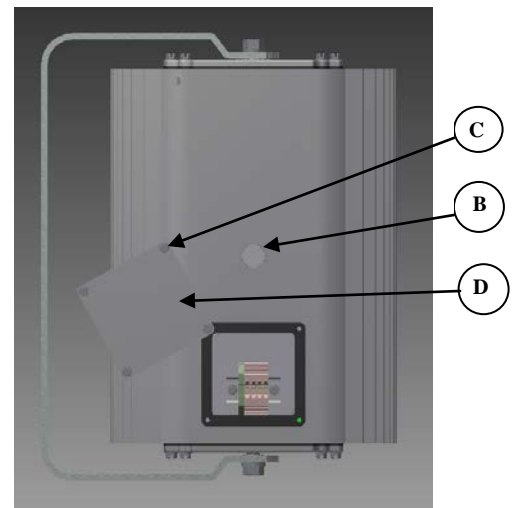
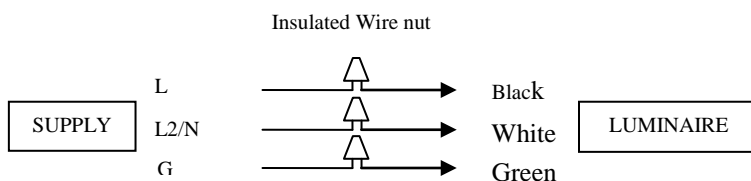


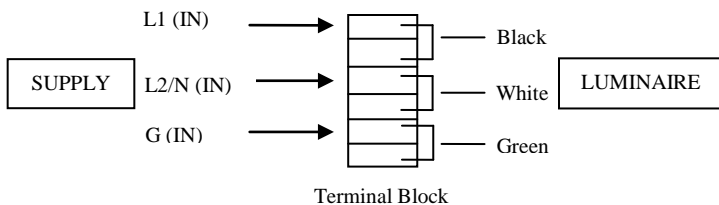
Figure 2

KFL Series with Factory Installed Terminal Block

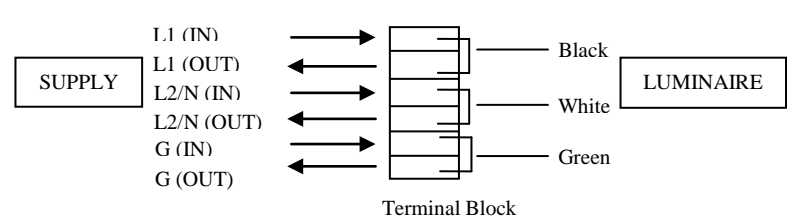
Standard Connection Method (Insulated Wire Nuts)



Connection Method (Insulated Terminal Block Assembly) Standard Wiring Method



Connection Method (Insulated Terminal Block Assembly) Loop In / Loop Out Wiring Method

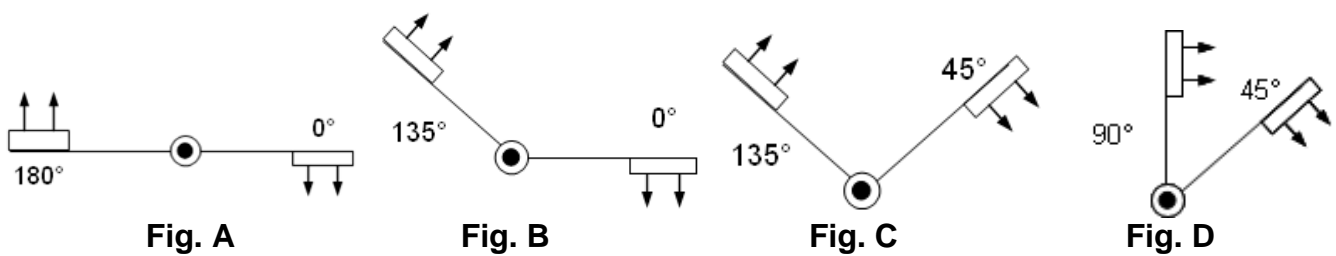


INSTALLATION INSTRUCTIONS (CONT.):

4. Replace access door (D) and access door captive screws (C). Securely tighten screws (C). See Figure 2 for more details.
5. Turn on electricity to verify fixture is operating properly.

Aiming Designations

The figures below refer to nameplate data as applicable.



MAINTENANCE INSTRUCTIONS:

CAUTION:

Disconnect the supplying circuit before opening fixture or removing optics. To maintain maximum light output, this fixture should be cleaned periodically. Maintenance procedures sometimes require fixtures to be hosed down for good housekeeping. The supply circuit **must** be turned **OFF** and the fixture lens **must** be allowed to cool to the ambient room temperature before cleaning. Only mild, non-abrasive cleaning agents should be used. The force of water applied by a hose must not exceed 65 gallons per minute coming from a 1" diameter hose applied at a distance of 10 feet. These periodic cleaning procedures are important to prevent the accumulation of dust and dirt which will impair the light output of the fixture. The glass lens should be regularly inspected for scratches and chips and, if damaged, must be replaced.

HIGH VIBRATION AREAS:

Periodic inspection of lens tightness is required; recommended every six (6) months.

Technical information, advice and recommendations contained in these documents are based on information that Killark believes to be reliable. All the information and advice contained in these documents is intended only for use by persons having been trained and possessing the requisite skill and know-how and to be used by such persons only at their own discretion and risk.

The nature of these instructions is informative only and do not cover all of the details, variations or combinations in which this equipment may be used, its storage, delivery, installation, check out, safe operation, and maintenance. Since conditions of use of the product are outside of the care, custody and control of Killark, the purchaser should determine the suitability of the product for its intended use, and assumes all risk and liability whatsoever in connection therewith.

REMEMBER TO SAVE ONE OF THESE SHEETS FOR MAINTENANCE PERSONNEL

Directions for Installation of KFL Accessories

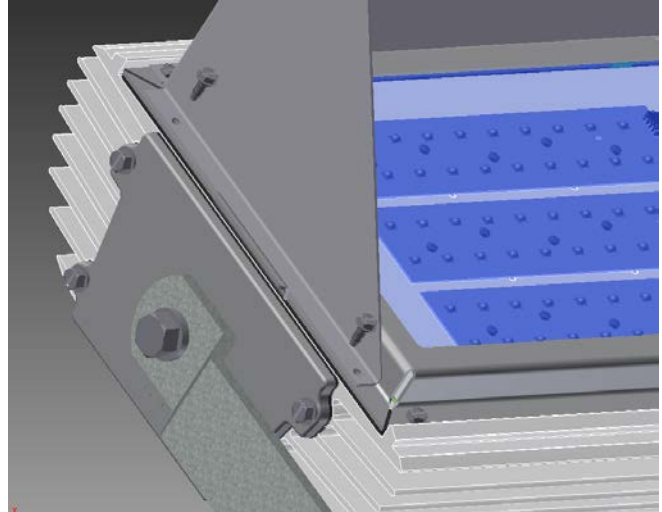
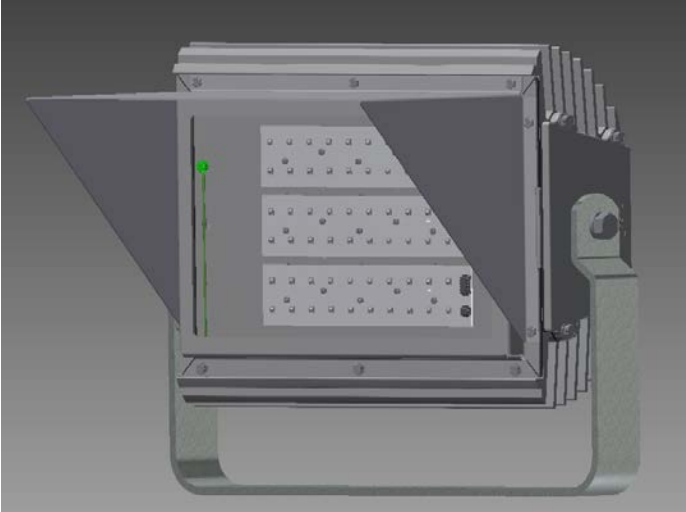
NOTE – Reflector (KFL-DARK) and Guard (KFLG) cannot be used simultaneously.

KFL-DARK Reflector

IMPORTANT- Before installing, check the fixture nameplate to be sure you have the correct fixture.

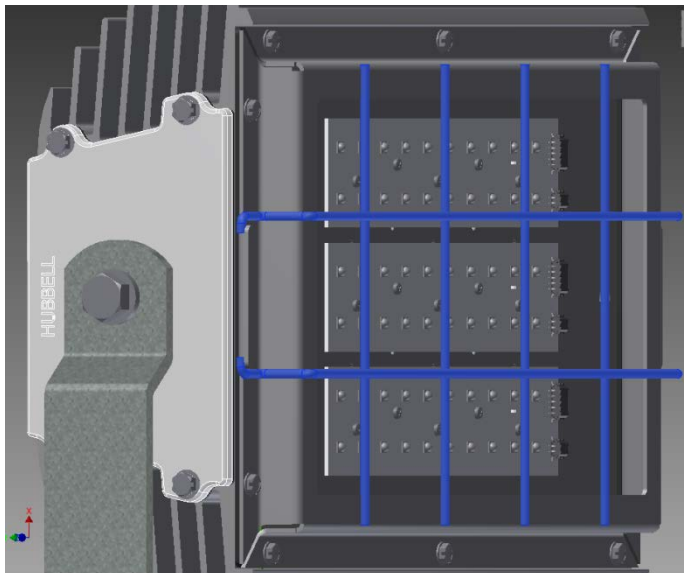
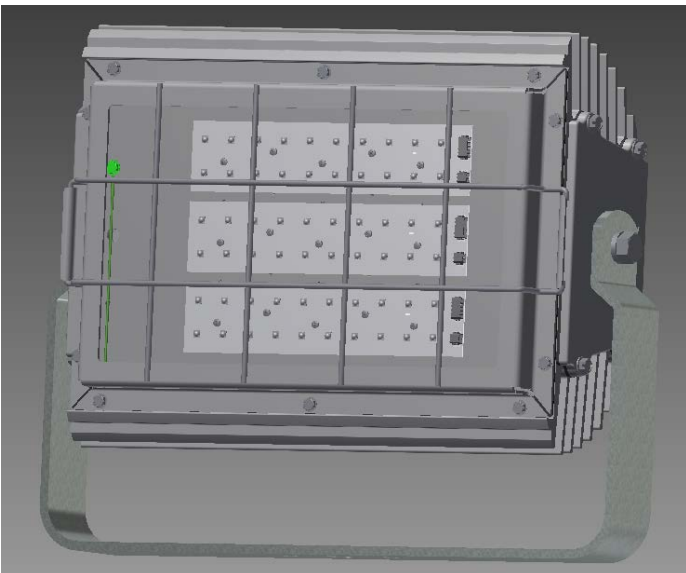
WARNING- Turn OFF the supplying circuit before starting installation.

1) To install reflector, carefully remove the (7) screws provided in housing that align with the locations of the holes on the reflector and retain the screws. Place the reflector into position, lining up the holes in the reflector with the holes on the lens housing. Reinstall the removed (7) screws into the existing hole location, and tighten to secure. **CAUTION**—All screws must be properly installed to maintain the integrity of the lens gasket seal.



KFLG Guard

2) To install lens assembly guard (KFLG), verify that the luminaire is completely assembled. Install lens guard on lens assembly by hooking the guard's end tabs under the luminaire housing's end tabs. Verify a tight attachment.



3) Turn ON the supplying circuit and test the fixture.