

WIREMOLD



DS4000 End Fittings INSTALLATION INSTRUCTIONS

Installation Instruction No.: 43427 – January 2006

Wiremold / Legrand Electrical Systems conform to and should be installed and properly grounded in compliance with requirements of the current National Electrical Code, Canadian Electrical Code, or codes administered by local authorities.

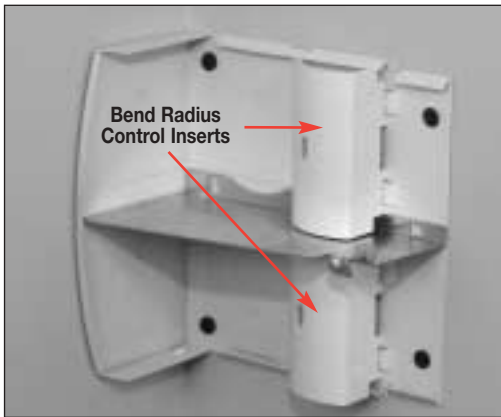
All electrical products may represent possible shock or fire hazard if improperly installed or used. Wiremold electrical products are UL listed to U.S. and Canadian safety standards, made for interior use only, and should be installed in conformance with current local and/or the National Electrical Code.



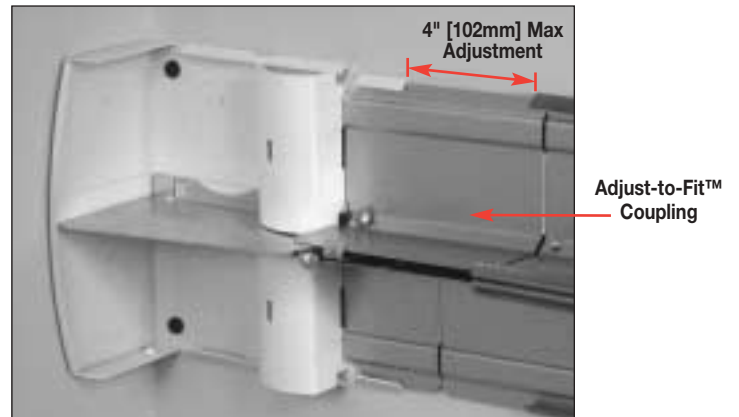
Products Covered: DS4010A, DS4010B, and DS4089

DS4010A INSTALLATION

Step 1. Mount DS4010A Entrance End Fitting with #8 fasteners (not supplied). 3/4" and 1 1/4" trade size knockouts are provided on the back and bottom of the Fitting for conduit. Square 2" x 2" [51mm x 51mm] knockouts are also provided for low voltage cabling.



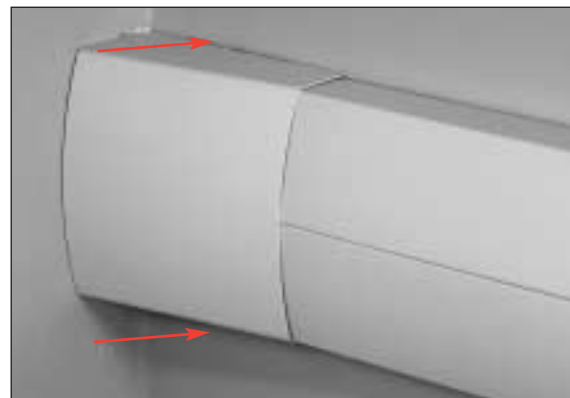
Step 2. Install DS4000B Raceway Base, attach with #8 fasteners. Join with Adjust-to-Fit™ Coupling.



Step 3. Snap DS4000C Cover on.

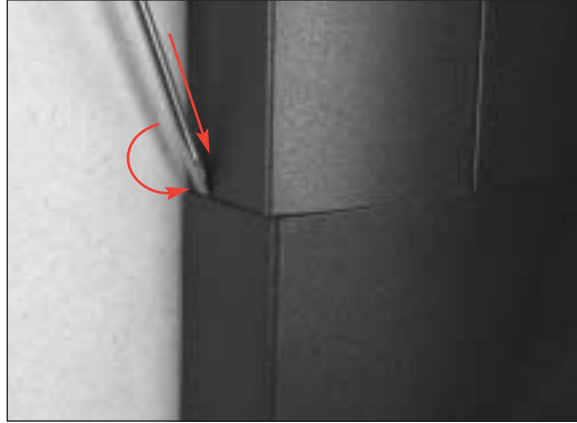
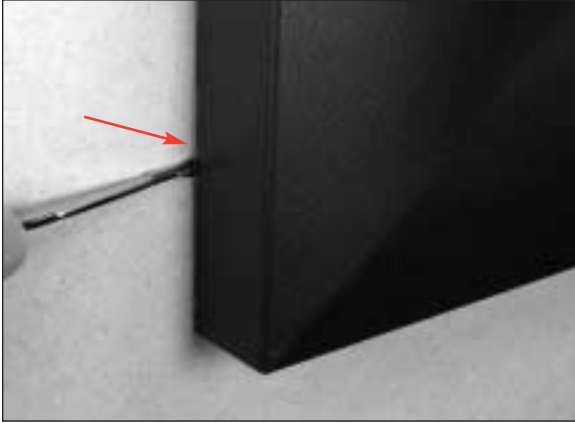


Step 4. Snap DS4010A Cover straight on. Cover will overlap DS4000C Raceway Cover



COVER REMOVAL

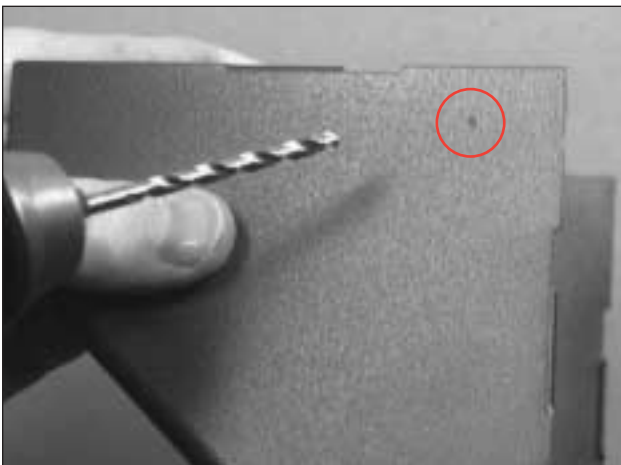
To remove Cover, use 650RT Cover Removal Tool, or carefully use a small flat blade screwdriver and pry up as shown.



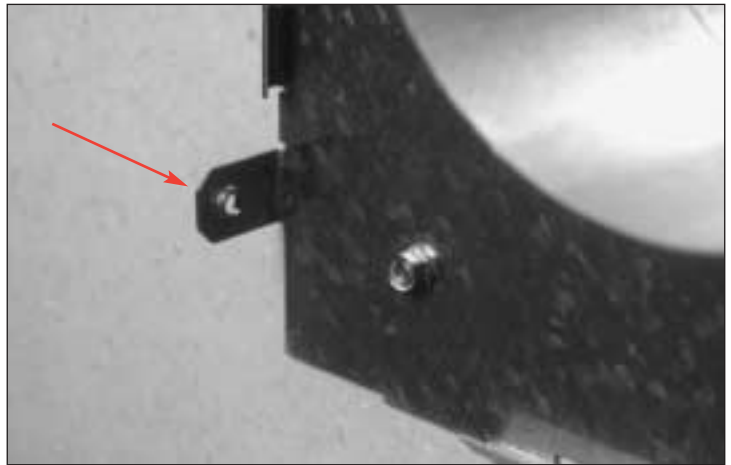
TAMPER RESISTANCE KIT

To make the DS4010A Fitting fully tamper resistant, use part no. DSTRK. Use a 3/16" [5mm] drill bit and drill a hole at the dimple point shown below. Install the tamper resistant screw with the bit supplied.

Step 1. Locate dimple on fitting and use as guide to drill hole for tamper resistant screw.



Step 2. Install supplied tamper resistant screw through drilled hole into tab on back.

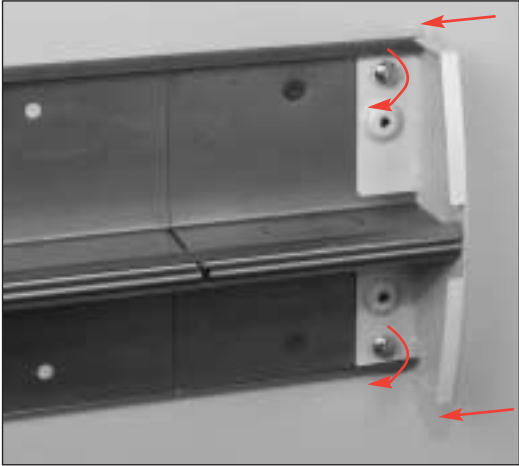


Step 3. Installation complete.

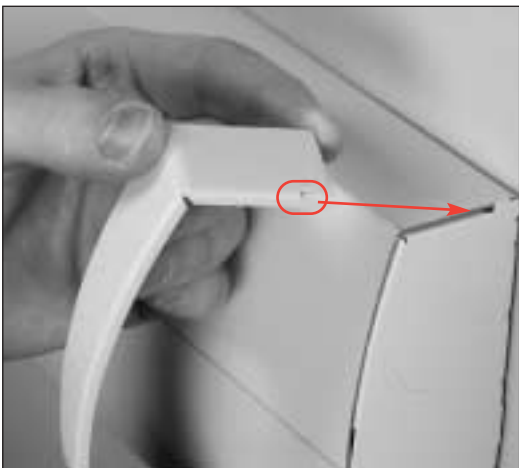


DS4010B INSTALLATION

Step 1. Insert DS4010B Blank End Fitting onto end of DS4000B Raceway Base and tighten screws to secure. Do not over tighten.



Step 3. Snap Trim Piece from DS4010B down onto End Fitting from top covering DS4000C Raceway Cover sections and snapping into slots on End Fitting.



Step 2. Snap DS4000C Cover sections onto DS4000B Raceway Base and align with DS4010B Blank End Fitting.

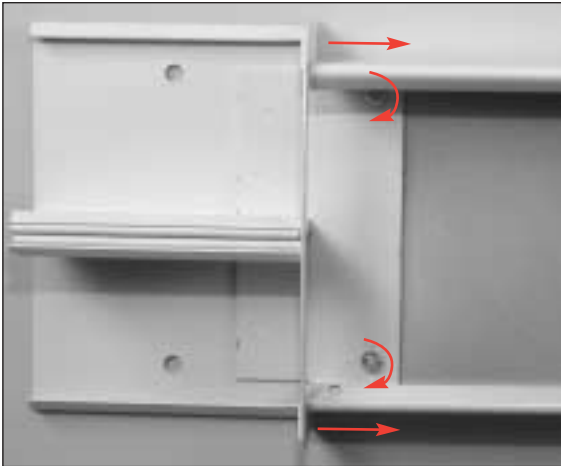


Step 4. Installation complete.

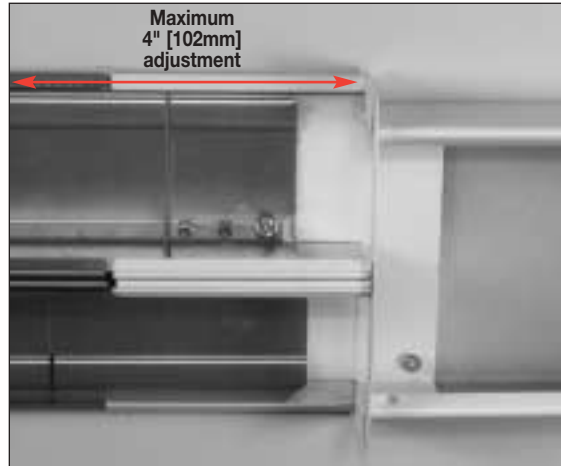


DS4089 INSTALLATION

Step 1. Insert DS4089 Adapter onto end of 4000 Series Raceway Base and tighten screws to secure.



Step 2. Use DS4001 Adjust-to-Fit™ Couplings to attach DS4000B Raceway Base.



Step 3. Install DS4000C Covers to complete the installation.



For more information, visit www.wiremold.com/ds4000.

WIREMOLD



Wiremold / Legrand

U.S. and International:

60 Woodlawn Street • West Hartford, CT 06110

1-800-621-0049 • FAX 860-232-2062 • Outside U.S. 860-233-6251

Canada:

570 Applewood Crescent • Vaughan, Ontario L4K 4B4

1-800-723-5175 • FAX 905-738-9721

