

# WIREMOLD



## DS4015 Tee Fitting INSTALLATION INSTRUCTIONS

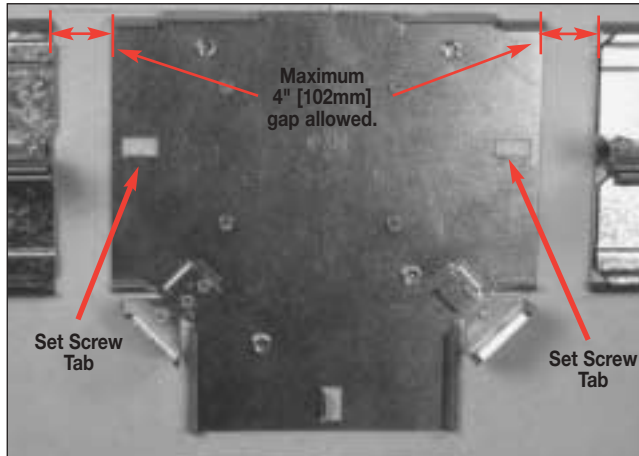
Installation Instruction No.: 43270 – January 2006

Wiremold / Legrand Electrical Systems conform to and should be installed and properly grounded in compliance with requirements of the current National Electrical Code, Canadian Electrical Code, or codes administered by local authorities.

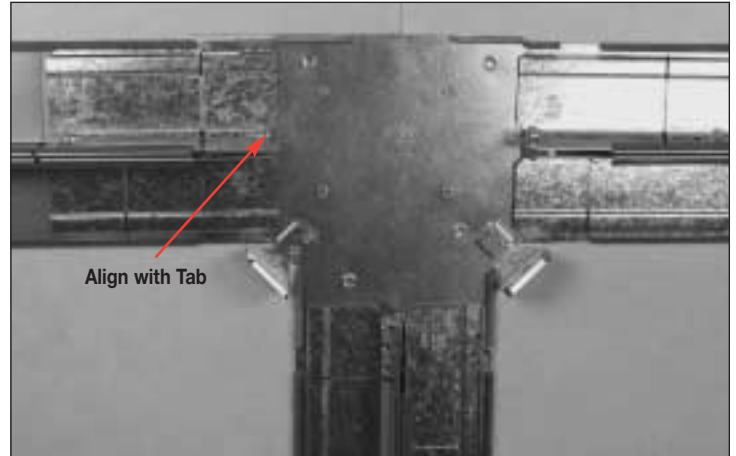
All electrical products may represent possible shock or fire hazard if improperly installed or used. Wiremold electrical products are UL listed to U.S. and Canadian safety standards, made for interior use only, and should be installed in conformance with current local and/or the National Electrical Code.



**Step 1.** Mount DS4015 Base to wall using minimum #8 fasteners as shown.

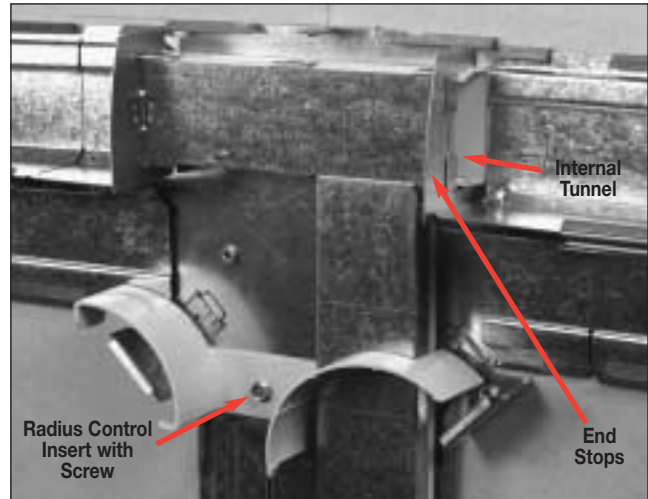
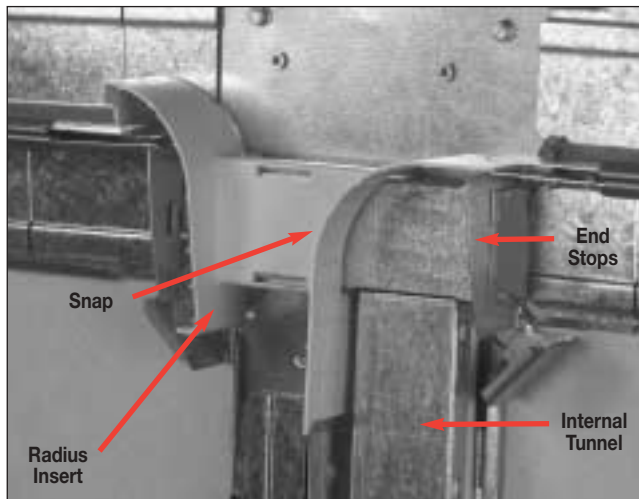


**Step 2.** Install Adjust-to-Fit™ Couplings to mate with Raceway Base. Align screws to Tabs as shown.



**NOTE:** The DS4015 Tee Fitting can be configured two different ways depending on where the communication cables are installed. Electrical wiring is meant to be housed inside the Internal Tunnel. Communication cables are controlled by the Radius Control Inserts.

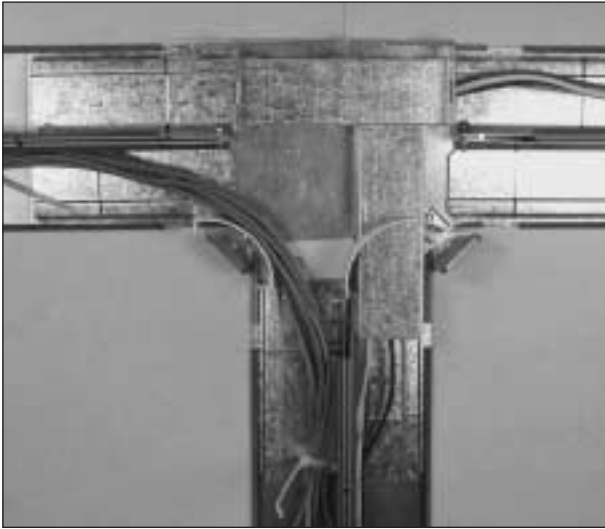
**Step 3.** Assemble the Internal Tunnel as shown and mount to the top or bottom Channel. Secure the Internal Tunnel with supplied screws to the appropriate holes. Make sure End Stops match the Raceway Cover orientation. Install Radius Control Inserts as shown.



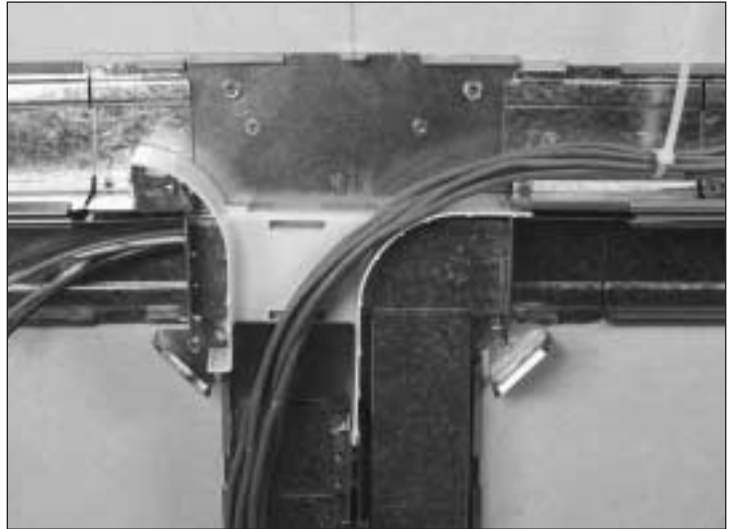
For more information, visit [www.wiremold.com/ds4000](http://www.wiremold.com/ds4000).

---

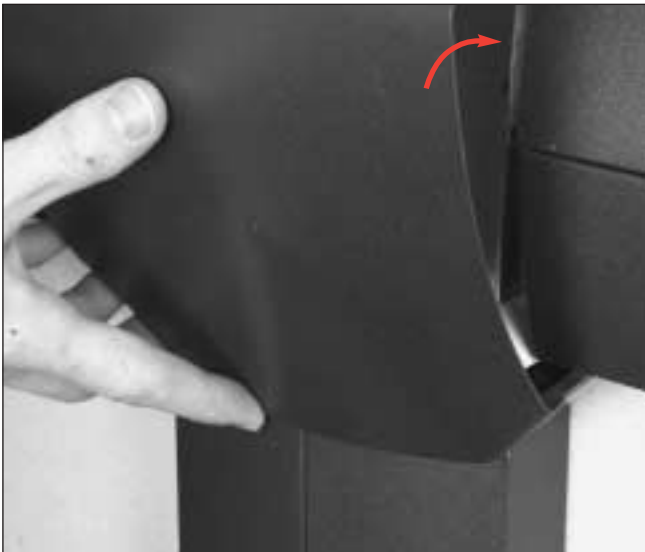
**ELECTRICAL WIRING – Top Channel.**



**COMMUNICATION CABLING – Top Channel**



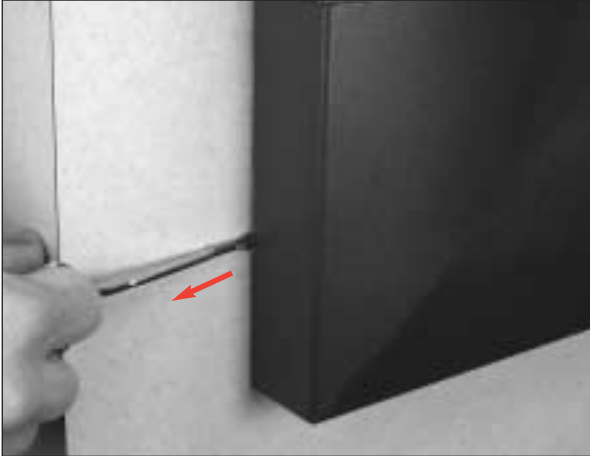
**COVER INSTALLATION:** Hook corners as shown and snap into place.



---

**FITTING COVER REMOVAL – Fitting Cover can be removed using two methods:**

**Cover Removal with 650RT**

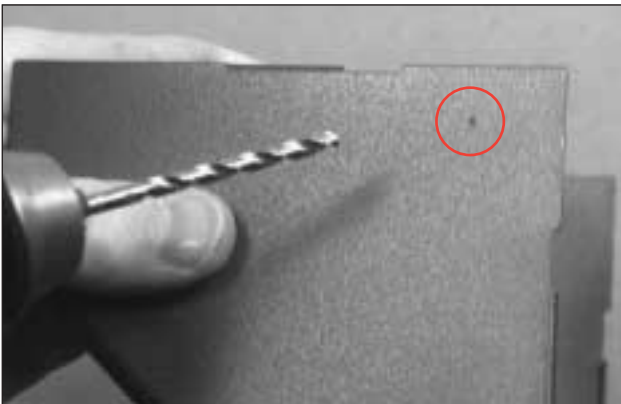


**Cover Removal with Screwdriver**

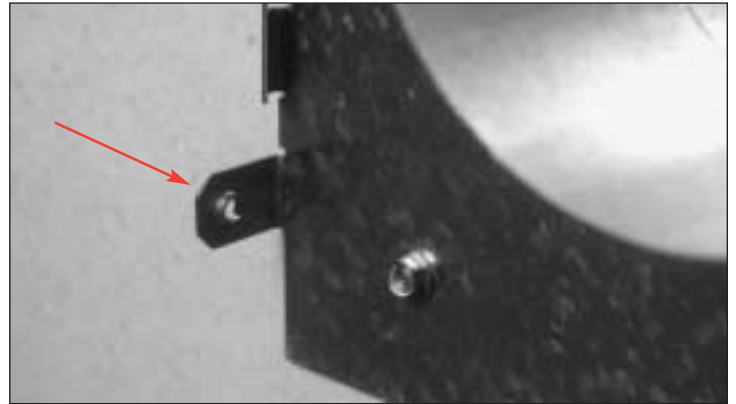


To make the Fittings fully tamper resistant, use part no. DSTRK.

**Step 1.** Locate Dimple on Fitting and use as guide to drill 3/16" [5mm] hole for Tamper Resistant Screw.



**Step 2.** Install Tamper Resistant Screw through drilled hole in the Cover into the tab with hole on the Fitting Base.



**Step 3.** Installation complete.



---

*For more information, visit [www.wiremold.com/ds4000](http://www.wiremold.com/ds4000).*

---

**WIREMOLD**



**Wiremold / Legrand**

*U.S. and International:*

60 Woodlawn Street • West Hartford, CT 06110

1-800-621-0049 • FAX 860-232-2062 • Outside U.S. 860-233-6251

*Canada:*

570 Applewood Crescent • Vaughan, Ontario L4K 4B4

1-800-723-5175 • FAX 905-738-9721

