

# Recessed LED Downlights with WarmDim®

Ultra-efficient, high-performance LED downlights offering the warmth and ambience of incandescent dimming





# The Juno® WarmDim® LED Family



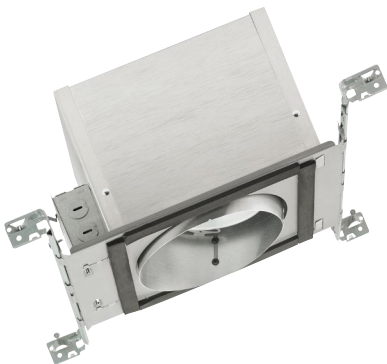
## 600 and 900 Lumen LED Downlights

Juno LED IC-rated downlights with the WarmDim feature are available with 600 or 900 brilliant lumens, and new construction or remodel housings. Aperture sizes include 4-, 5-, and 6-inch diameters and are offered with open, lensed, and wall wash trims. These ultra-efficient downlights consume as little as 12 watts, producing industry-leading efficacies for their category.



## 600 Lumen Retrofit LED Trim Modules

Juno LED retrofit modules with the WarmDim feature produce 600 brilliant lumens and are available with downlight or adjustable eyeball trims. This is the fast, affordable way to update existing fixtures to ultra-efficient, high-performance LED illumination. They are compatible with most 6-inch medium base housings and offer an all-in-one design that is the model of installation simplicity.



## 900 Lumen Slope Ceiling LED Downlights

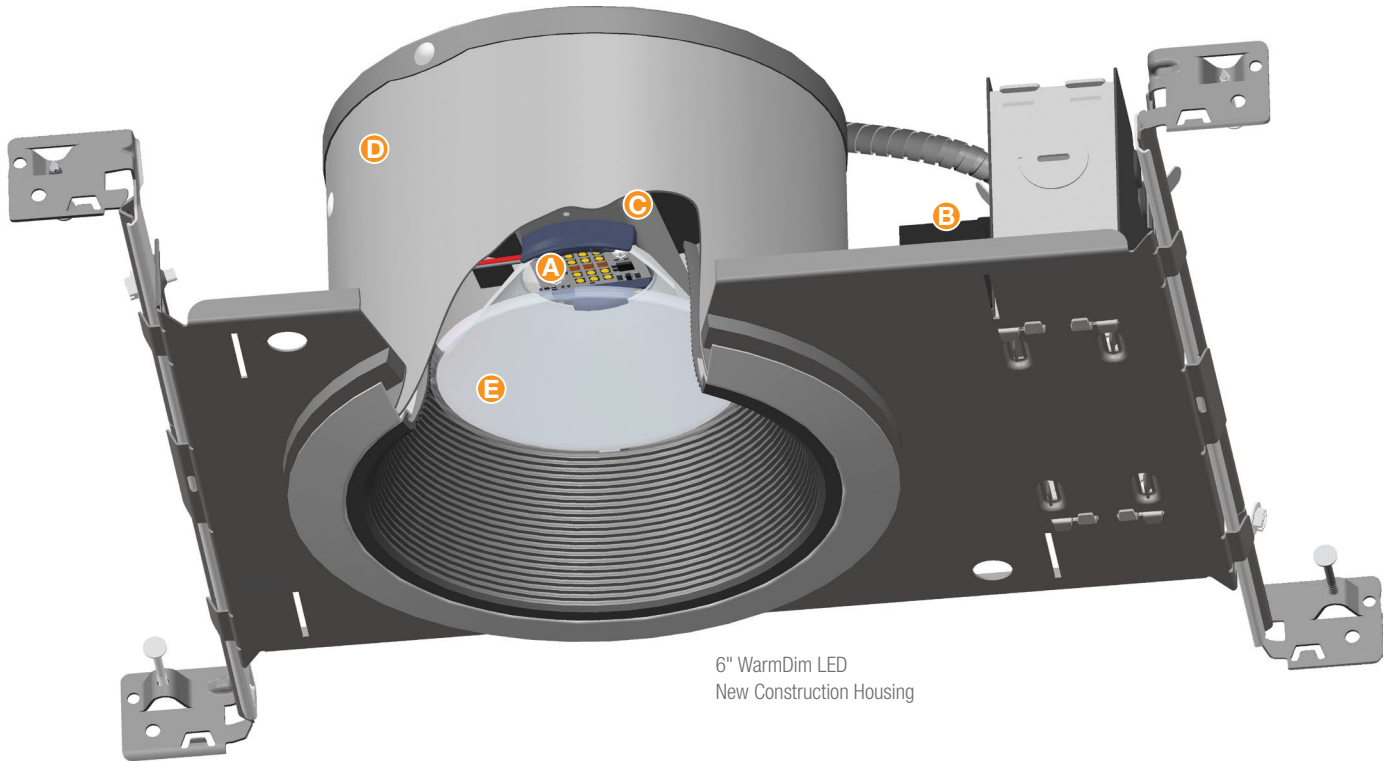
Juno slope ceiling LED downlights with the WarmDim feature are designed specifically for sloped ceiling applications. They are available in either standard or super slope configurations and produce a brilliant 900 lumens to accommodate higher ceilings. These ultra-efficient, IC-rated, 6-inch LED luminaires are the perfect complement to today's contemporary decors.



# Juno® WarmDim® LED Downlights



Juno LED IC-rated downlights with WarmDim – an exclusive Mainstream Dynamic technology – deliver ultra-efficient, high-performance illumination while capturing the warm glow and ambiance of incandescent dimming. Juno WarmDim 600 lumen and 900 lumen downlights are offered in 4-, 5- and 6- inch apertures. The 600 lumen downlights consume just 12 watts, while the 900 lumen downlights consume between 15 and 18 watts. All WarmDim downlights use far less energy than any comparable light sources and last dramatically longer.



6" WarmDim LED  
New Construction Housing

Optional Medium Flood  
Optic available for 5"  
and 6" downlights.



- A.** Proprietary patented WarmDim LED light engine features micro-processor controlled dimming that replicates the warmth of incandescent dimming. Dims from 3000K CCT at full lumen output to a warm 2000K while maintaining 90 minimum CRI throughout the dimming range (Patent US 8,710,754).
- B.** Dedicated 120-volt LED driver is compatible with readily available incandescent, magnetic low-voltage, and electronic low-voltage dimmers.
- C.** Effective thermal management is achieved by integrating the light engine into a thermally conductive housing that provides uninterrupted heat transfer for remarkable LED longevity. Service life is rated at 50,000 hours with 70% lumen maintenance and no perceptible color shifts.
- D.** Low-profile housings fit easily within 2 x 6 joists to accommodate shallow installations. New construction housings are supplied with Juno Real Nail 3® bar hangers; an integral T-bar notch secures housings to suspended ceiling grids without the need for clips. Remodel housings also available.
- E.** High-performance optic system produces uniform light distribution and reduces glare. The reflector and high-transmission diffusing lens are computer optimized for each aperture size, and the lens conceals the LED array, providing the aesthetic of a deeply regressed PAR lamp.



## Juno® 4" WarmDim® Downlights (New Construction)



Dedicated LED, Air-Loc® sealed new construction housing with patented WarmDim®. LED color temperature warms while dimming to emulate the dimming performance of traditional incandescent light sources. Double wall, shallow housing construction allows for fit in 2 x 6 construction. Can be completely covered with insulation. Fully sealed housing stops infiltration and exfiltration of air, reducing heating and air cooling costs without the use of additional gaskets. LED housing is designed to provide 50,000 hours of life and is compatible with many standard Juno trims. 5 year limited warranty on LED components.

**New Construction**  
12¼" L x 6¾" W x 6" H  
Ceiling cutout: 4½"

Example: IC1LED WD G4N 09LM 30K 90CRI 120 FRPC

Series	Dynamic Feature	Gen	Lumens	CCT	CRI	Distribution	Voltage/Driver
IC1LED 4" New Construction Housing	WD WarmDim®	G4N	06LM 600 Lumens	30K 3000K	90CRI	(blank) Medium Flood (45°)	120 FRPC 120V Only; Forward Phase/ELV Dimming
			09LM 900 Lumens	WFL Wide Flood (65°)		MVOLT ZT10 Multi-Volt (120-277V), 0-10, 10% dim	
						MVOLT ZT1 Multi-Volt (120-277V), 0-10, 1% dim	
						MVOLT EZ1* Multi-Volt (120-277V) eldoLED 0-10V, 1% dim	
						MVOLT EZ10* Multi-Volt (120-277V) eldoLED 0-10V, 10% dim	

## Juno 4" WarmDim Downlights (Remodel)



Dedicated LED, Air-Loc® remodel housing with patented WarmDim®. LED color temperature warms while dimming to emulate the dimming performance of traditional incandescent light sources. Shallow housing allows for fit in 2 x 6 construction. IC remodel housing for remodel application where back side of ceiling is not accessible. Installs through an opening in the ceiling from below. Secured in place by factory installed remodel springs. Can be completely covered with insulation. LED housing is designed to provide 50,000 hours of life and is compatible with many standard Juno trims. 5 year limited warranty on LED components.

**New Construction**  
12½" L x 4¾" W x 4¾" H  
Ceiling cutout: 4¾"

Example: IC1RLED WD G4N 06LM 30K 90CRI 120 FRPC

Series	Dynamic Feature	Gen	Lumens	CCT	CRI	Distribution	Voltage/Driver
IC1RLED 4" Remodel Housing	WD WarmDim®	G4N	06LM 600 Lumens	30K 3000K	90CRI	(blank) Medium Flood (45°)	120 FRPC 120V Only; Forward Phase/ELV Dimming
			09LM 900 Lumens	WFL Wide Flood (65°)		MVOLT ZT10 Multi-Volt (120-277V), 0-10, 10% dim	
						MVOLT ZT1 Multi-Volt (120-277V), 0-10, 1% dim	
						MVOLT EZ1* Multi-Volt (120-277V) eldoLED 0-10V, 1% dim	
						MVOLT EZ10* Multi-Volt (120-277V) eldoLED 0-10V, 10% dim	

<sup>1</sup> Not ENERGY STAR® certified.

ENERGY STAR® and T24 certification is dependent on trim finish. See housing spec sheet for specific information for each trim.

## Juno 4" LED Downlight Trims

### Open Trims



**Pinhole with Integral Shield**  
13 WH White  
2" Aperture



**Baffle**  
14 BWH<sup>1</sup> Black Baffle  
14 BSC<sup>1</sup> Black Baffle  
14 BBRZ<sup>1</sup> Black Baffle  
14 BBL<sup>1</sup> Black Baffle  
14 WWH White Baffle  
3⅜" Aperture



**Cone**  
17 CWH Clear Alzak®  
17 GWH Gold Alzak®  
17 BWH Black Alzak®  
17 PTSC Pewter Alzak®  
17 WWH Gloss White  
17 HZWH Haze  
17 WHZWH Wheat Haze  
17 WHZBRZ Wheat Haze  
3⅜" Aperture



**Beveled Cylinder**  
4103 FROSTWH  
4103 FROSTSC  
3" Aperture



**Beveled Cone**  
4104 HZSC Haze  
4104 WHZABZ Wheat Haze  
3⅜" Aperture



**Cylinder**  
4150 MESHSC  
2½" Aperture

### Lensed



**Wall Wash**  
39 CWH Clear Alzak®  
39 HZWH Haze  
39 WWH Gloss White  
39 WHZWH Wheat Haze



**Drop Opal**  
11 WH White



**Frosted Lens with Clear Center**  
12 WWH  
12 WSC  
12 WBRZ



**Beveled Dome - Shower**  
4101 ABZ  
4101 SC  
4101 WH



**Beveled Shower**  
4102 ABZ  
4102 SC  
4102 WH

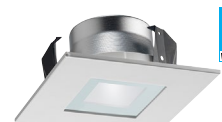
### Square Trims



13SQ WH White Trim



17SQ HZWH Haze, White Trim  
17SQ WWH White, White Trim  
17SQ BWH Black, White Trim  
17SQ WHZWH Wheat Haze



**Frosted Lens with Clear Center**  
12SQ WWH White Trim

## Juno 5" WarmDim Downlights (New Construction)



Dedicated LED, Air-Loc® sealed new construction housing with patented WarmDim®. LED color temperature warms while dimming to emulate the dimming performance of traditional incandescent light sources. Shallow housing allows for fit in 2 x 6 construction. Can be completely covered with insulation. Fully sealed housing stops infiltration and exfiltration of air, reducing heating and air cooling costs without the use of additional gaskets. LED housing is designed to provide 50,000 hours of life and is compatible with many standard Juno trims. 5 year limited warranty on LED components.

### New Construction

15 1/2" L x 9 1/4" W x 4 7/8" H  
Ceiling cutout: 5 1/2"

Example: IC20LED WD G4N 06LM 30K 90CRI 120 FRPC

Series	Dynamic Feature	Gen	Lumens	CCT	CRI	Voltage/Driver
IC20LED 5" New Construction Housing	WD WarmDim®	G4N	06LM 600 Lumens	30K 3000K	90CRI	120 FRPC 120V Only; Forward Phase/ELV Dimming
		G4	09LM 900 Lumens			MVOLT ZT10 Multi-Volt (120-277V), 0-10, 10% dim MVOLT ZT1 Multi-Volt (120-277V), 0-10, 1% dim MVOLT EZ1* Multi-Volt (120-277V) eldoLED 0-10V, 1% dim MVOLT EZ10* Multi-Volt (120-277V) eldoLED 0-10V, 10% dim

## Juno 5" WarmDim Downlights (Remodel)



Dedicated LED, Air-Loc® remodel housing with integral patented WarmDim®. LED color temperature warms while dimming to emulate the dimming performance of traditional incandescent light sources. Shallow housing allows for fit in 2 x 6 construction. IC remodel housing for remodel application where back side of ceiling is not accessible. Installs through an opening in the ceiling from below. Secured in place by factory installed remodel springs. Can be completely covered with insulation. When used with supplied ALG kit, stops infiltration and exfiltration of air, reducing heating and air cooling costs. LED housing is designed to provide 50,000 hours of life and is compatible with many standard Juno trims. 5 year limited warranty on LED components.

### New Construction

13 1/2" L x 5 1/8" W x 4 7/8" H  
Ceiling cutout: 5 1/2"

Example: IC20RLED WD G4 09LM 30K 90CRI 120 FRPC

Series	Dynamic Feature	Gen	Lumens	CCT	CRI	Voltage/Driver
IC20RLED 5" Remodel Housing	WD WarmDim®	G4N	06LM 600 Lumens	30K 3000K	90CRI	120 FRPC 120V Only; Forward Phase/ELV Dimming
		G4	09LM 900 Lumens			MVOLT ZT10 Multi-Volt (120-277V), 0-10, 10% dim MVOLT ZT1 Multi-Volt (120-277V), 0-10, 1% dim MVOLT EZ1* Multi-Volt (120-277V) eldoLED 0-10V, 1% dim MVOLT EZ10* Multi-Volt (120-277V) eldoLED 0-10V, 10% dim

### Accessories

Catalog No.	Description
LEDOPTICG3 MFL	Medium Flood Optic (50°)

## Juno 5" LED Downlight Trims

### Downlights



#### Baffle

205 WWH White Baffle  
205 BWH<sup>1</sup> Black Baffle  
205 BSC<sup>1</sup> Black Baffle  
205 BBRZ<sup>1</sup> Black Baffle  
4 7/8" Aperture



#### Cone

204 CWH Clear Alzak®  
204 GWH Gold Alzak®  
204 BWH Black Alzak®  
204 PTSC Pewter Alzak®  
204 WWH Gloss White  
204 HZWH Haze  
204 WHZWH Wheat Haze  
204 WHZBRZ Wheat Haze  
4 3/8" Aperture

### Wall Wash



#### Wall Wash

213G3 WWH White  
213G3 BWH Black

### Lensed



#### Flat Glass Shower Trim\*

210N BRZ  
210N SC  
210N WH



#### Frosted Lens with Clear Center\*

212N BRZ  
212N SC  
212N WH



#### White Baffle, Regressed Frosted Dome Lens\*

2130 WWH White  
2130 BWH Black



#### Beveled Frame, Frosted Dome Lens\*

5101 ABZ  
5101 SC  
5101 WH

\* Do not use reflector shipped with trim for LED housing. Discard or recycle reflector.

<sup>1</sup> Not ENERGY STAR® certified.

ENERGY STAR® and T24 certification is dependent on trim finish. See housing spec sheet for specific information for each trim.

## Juno 6" WarmDim Downlights (New Construction)



Dedicated LED, Air-Loc® sealed new construction housing with patented WarmDim®. LED color temperature warms while dimming to emulate the dimming performance of traditional incandescent light sources. Shallow housing allows for fit in 2 x 6 construction. Can be completely covered with insulation. Fully sealed housing stops infiltration and exfiltration of air, reducing heating and air cooling costs without the use of additional gaskets. LED housing is designed to provide 50,000 hours of life and is compatible with many standard Juno trims. 5 year limited warranty on LED components.

### New Construction

15 1/4" L x 9 1/4" W x 5 1/2" H  
Ceiling cutout: 6 7/8"

Example: IC22LED WD G4N 06LM 30K 90CRI 120 FRPC

Series	Dynamic Feature	Gen	Lumens	CCT	CRI	Distribution	Voltage/Driver
IC22LED 6" New Construction Housing	WD WarmDim®	G4N	06LM	30K	90CRI	(blank)	120 FRPC 120V Only; Forward Phase/ELV Dimming
			600 Lumens	3000K		Medium Flood (45°)	
		G4	09LM			WFL	
			900 Lumens			Wide Flood (65°)	MVOLT ZT10 Multi-Volt (120-277V), 0-10, 10% dim
							MVOLT ZT1 Multi-Volt (120-277V), 0-10, 1% dim
							MVOLT EZ1* Multi-Volt (120-277V) eldoLED 0-10V, 1% dim
							MVOLT EZ10* Multi-Volt (120-277V) eldoLED 0-10V, 10% dim

## Juno 6" WarmDim Downlights (Remodel)



Dedicated LED, Air-Loc® remodel housing with integral patented WarmDim®. LED color temperature warms while dimming to emulate the dimming performance of traditional incandescent light sources. Shallow housing allows for fit in 2 x 6 construction. IC remodel housing for remodel application where back side of ceiling is not accessible. Installs through an opening in the ceiling from below. Secured in place by factory installed remodel springs. Can be completely covered with insulation. When used with supplied ALG kit, stops infiltration and exfiltration of air, reducing heating and air cooling costs. LED housing is designed to provide 50,000 hours of life and is compatible with many standard Juno trims. 5 year limited warranty on LED components.

### New Construction

14 1/2" L x 7 1/4" W x 5 1/2" H  
Ceiling cutout: 6 3/4"

Example: IC22RLED WD G4 09LM 30K 90CRI 120 FRPC

Series	Dynamic Feature	Gen	Lumens	CCT	CRI	Voltage/Driver
IC22RLED 6" Remodel Housing	WD WarmDim®	G4N	06LM	30K	90CRI	120 FRPC 120V Only; Forward Phase/ELV Dimming
			600 Lumens	3000K		
		G4	09LM			
			900 Lumens			

### Accessories

Catalog No.	Description
LEDOPTICG3 MFL	Medium Flood Optic (50°)

1 Not ENERGY STAR® certified.

ENERGY STAR® and T24 certification is dependent on trim finish. See housing spec sheet for specific information for each trim.

## Juno 6" LED Downlight Trims

### Open Trims



#### Conical

24 WWH White Baffle  
24 BWH<sup>1</sup> Black Baffle  
24 BSC<sup>1</sup> Black Baffle  
24 BBRZ<sup>1</sup> Black Baffle  
24 BBL<sup>1</sup> Black Baffle

5 3/4" Aperture



#### Conical Cone

27 CWH Clear Alzak®  
27 GWH Gold Alzak®  
27 BWH Black Alzak®  
27 PTSC Pewter Alzak®  
27 WWH Gloss White  
27 HZWH Haze  
27 WHZWH Wheat Haze  
27 WHZBRZ Wheat Haze

5 3/4" Aperture



Octagonal  
9024 WWH

5 3/4" Aperture



Luminous Disc (Frosted)  
9324 SC

3 1/4" Aperture



Chrome Band  
9524 SC

5 7/8" Aperture



Luminous Collar (Frosted)  
9702

6 3/8" Aperture

### Wall Wash Trims



#### Wall Wash

262G3 WWH White Baffle  
262G3 BWH Black Baffle

### Lensed Trims



#### Albalite

20 PW Shower/Closet Light  
20 WH



#### Drop Opal

21 PW Shower/Closet Light  
21 WH



#### Fresnel

22 WH



#### Frosted Lens\*

239 WH



Frosted Lens with Clear Center

242 BRZ  
242 SC  
242 WH



Decorative Swirled Etched Opal Glass\*  
243 WH



White Baffle, Regressed Frosted Dome Lens\*

2330W WH White  
2330B WH Black



Beveled Frame, Frosted Dome Lens\*

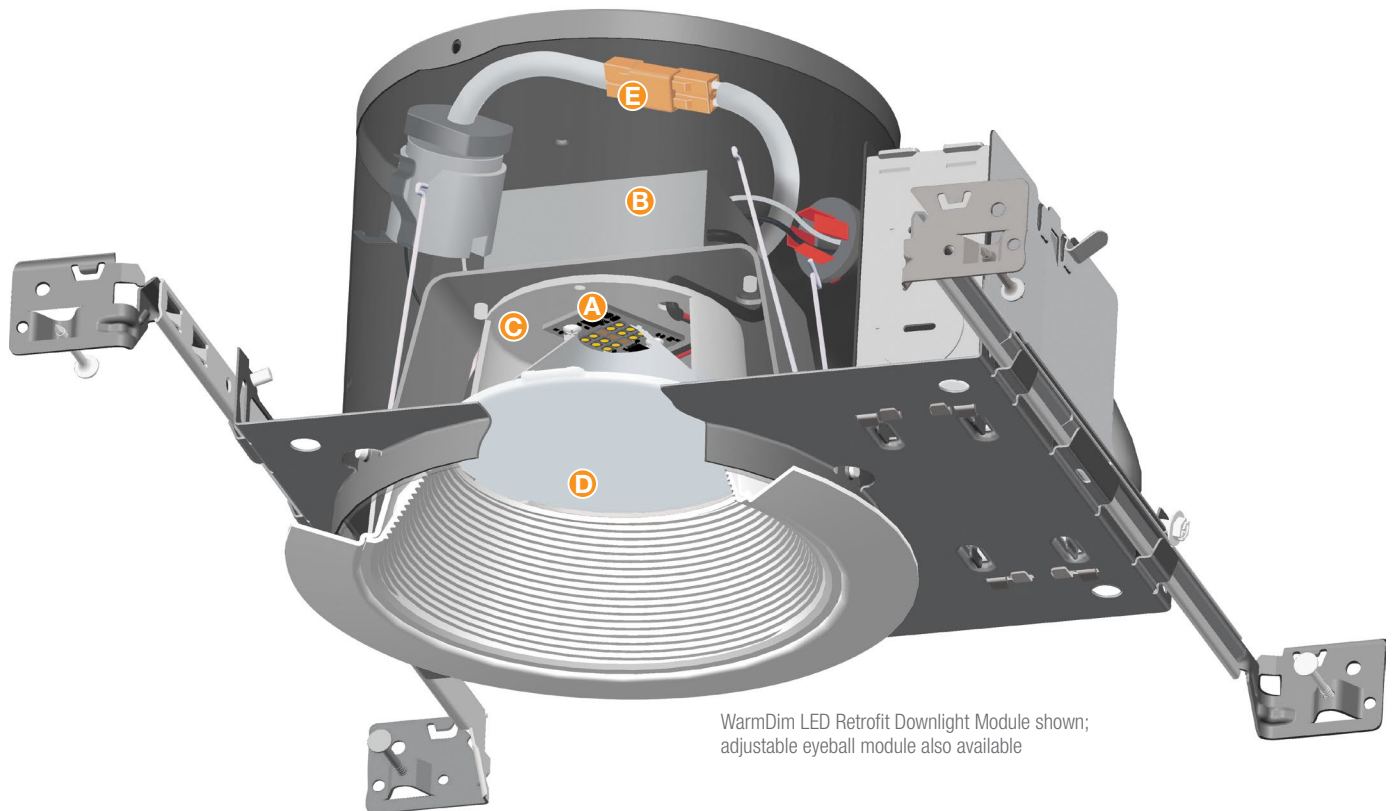
6101 ABZ  
6101 SC  
6101 WH

\* Do not use reflector shipped with trim for LED housing. Discard or recycle reflector.

# Juno® WarmDim® LED Retrofit Trim Modules



With Juno WarmDim LED retrofit modules, you can easily and economically upgrade existing 6-inch, medium-base, recessed fixtures to ultra-efficient LED illumination. In the process, you will also be upgrading to the ultimate in dimming technology. The exclusive Juno WarmDim feature warms LED color temperature while dimming to capture the warmth and ambiance previously achieved only with incandescent dimming. Available in both downlight and adjustable eyeball styles, these IC-rated LED trim modules produce 600 brilliant lumens from just 12 watts.



WarmDim LED Retrofit Downlight Module shown; adjustable eyeball module also available

All-in-one design of downlight and eyeball retrofit trim modules incorporate the LED light engine, driver, heat sink, and trim in a single unit.

- A.** Proprietary patented WarmDim LED light engine features micro-processor controlled dimming that replicates the warmth of incandescent dimming. Dims from 3000K CCT at full lumen output to a warm 2000K while maintaining 90 minimum CRI throughout the range. (Patent US 8,710,754)
- B.** Dedicated 120-volt LED driver is compatible with most incandescent, magnetic, and electronic low-voltage wall box dimmers.
- C.** Effective thermal management is achieved by integrating the LED array with a one-piece high purity aluminum, thermally conductive trim to provide uninterrupted heat transfer. Ensures long life of the LEDs even when covered with insulation. At the end of their 50,000 hour rated life, the LEDs can be expected to produce 70% of their initial light output with no perceptible changes in color.
- D.** High-efficiency optic system features a computer-optimized reflector and high-transmission diffusing lens that provides uniform light distribution and effective glare control while concealing the LED array.
- E.** Whip adapter with screw base and quick connect plug speeds installation into 6-inch, medium-base, recessed housings.



**Wet Location**  
(Downlight only)



(Downlight only)



## Juno 6" WarmDim Retrofit LED Downlight Trim



All-in-one 6" LED Retrofit downlight trim with patented WarmDim® installs into existing 6" incandescent housings with medium base sockets or Juno IC23 LEDT24 and IC23R LEDT24 quick connect recessed housings. LED color temperature warms while dimming to emulate the dimming performance of traditional incandescent light sources. May be used in housings completely covered with insulation. Selection of interchangeable baffle and cone trim inserts can be changed in the field to customize the look of the product. Dimmable with most standard incandescent or electronic low voltage dimmers. Designed to provide 50,000 hours of life. 5 year limited warranty on LED components.

Example:  
J6RL WD G4N DB 06LM 30K 90CRI 120 FRPC BWH

Series	Dynamic Feature	Gen	Trim Style	Lumens	CCT	CRI	Voltage/Driver	Trim Finish
J6RL 6" Retrofit Downlight Trim	WD WarmDim®	G4N	DB Downlight Baffle	06LM 600 Lumens	30K 3000K	90CRI	120 FRPC 120V Only; Forward Phase/ELV Dimming	WWH White Baffle BWH Black Baffle
			DC Downlight Cone	06LM 600 Lumens	30K 3000K	90CRI	120 FRPC 120V Only; Forward Phase/ELV Dimming	CWH Clear Cone WWH White Cone HZWH Haze Cone WHZWH Wheat Haze Cone

## Juno 6" WarmDim Retrofit LED Eyeball Trim Module



All-in-one 6" LED Retrofit eyeball trim with patented WarmDim® installs into existing 6" incandescent housings with medium base sockets or Juno IC23 LEDT24 and IC23R LEDT24 quick connect recessed housings. LED color temperature warms while dimming to emulate the dimming performance of traditional incandescent light sources. May be used in housings completely covered with insulation. Adjustable eyeball design allows for 30° vertical adjustment. Field installable medium flood optic accessory available. Dimmable with most standard incandescent or electronic low voltage dimmers. Designed to provide 50,000 hours of life. 5 year limited warranty on LED components.

Example:  
J6RLE WD G4N DB 06LM 30K 90CRI 120 FRPC WH

Series	Dynamic Feature	Gen	Lumens	CCT	CRI	Voltage/Driver	Trim Finish
J6RLE 6" Retrofit Eyeball Trim	WD WarmDim®	G4N	06LM 600 Lumens	30K 3000K	90CRI	120 FRPC 120V Only; Forward Phase/ELV Dimming	WH White

### Compatible Housings

The J6RL WD and J6RLE WD retrofit modules are compatible with most 6" recessed housings measuring at least 5-1/4" high with an inside diameter between 6" and 6-3/4". Removal of the housing socket plate or socket mounting bracket may be required in order for the trim to fit properly. If housing does not have torsion spring brackets, the V6RLTRB accessory is required. Compatible housings include, but not limited to:

- Juno housings:** IC2 and TC2 Series, IC22 Series, IC23 Series, IC21 Series
- VuLite housings:** V6IC and V6TC Series
- Lithonia housings:** L7X and LC6 Series
- Halo housings:** H7 Series
- Thomas housings:** PS1 and PS3 Series
- Capri housings:** QL1 Series

## Juno Downlight Trim Inserts

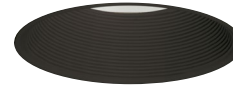
Interchangeable trim inserts for WarmDim LED retrofit downlight modules are offered in six beautiful finishes.



**J6RLTRIM DB WWH**  
White Baffle



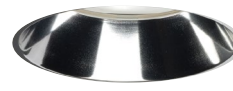
**J6RLTRIM DC WWH**  
White Cone



**J6RLTRIM DB BWH**  
Black Baffle



**J6RLTRIM DC HZWH**  
Haze Cone



**J6RLTRIM DC CWH**  
Clear Cone

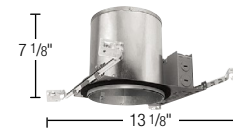


**J6RLTRIM DC WHZWH**  
Wheat Haze Cone

### Accessories

Catalog No.	Description
LEDOPTICG3 MFL	Medium Flood Optic (50°) (J6RLE only)
V6RLTRB	Torsion receiver bracket kit to install Juno Retrofit LED Trim Modules into housings that do not have torsion receiver brackets.

### Juno Dedicated LED Housings



**Fixture Style:** IC23 LEDT24  
**Description:** 6" IC New Construction



**Fixture Style:** IC23R LEDT24  
**Description:** 6" IC Remodel

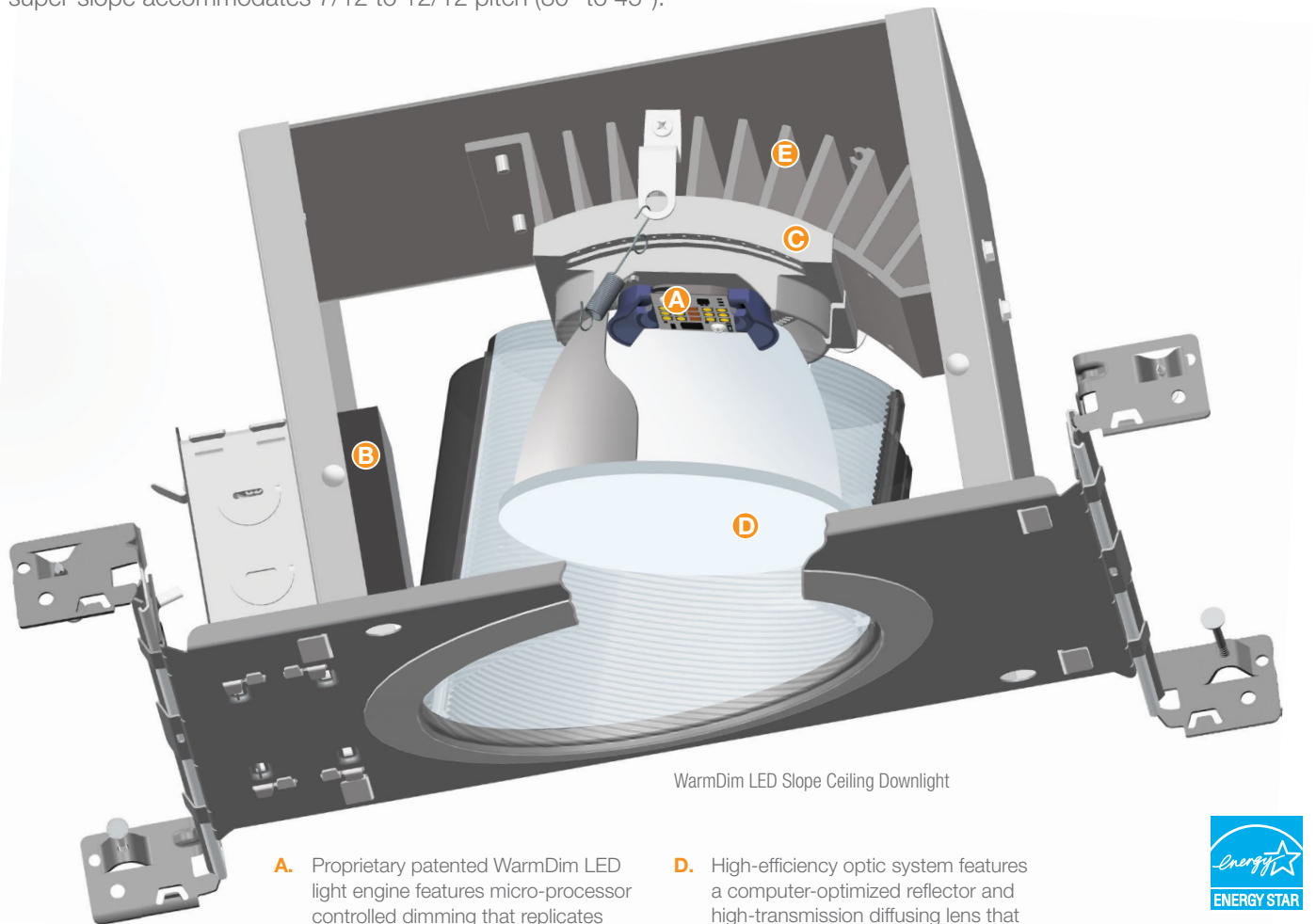


ENERGY STAR® and T24 certification is dependent on trim finish. See housing spec sheet for specific information for each trim.

# Juno® WarmDim® LED Slope Ceiling Downlights



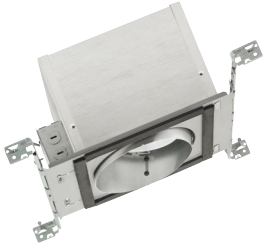
Juno slope and super-slope LED downlights were the industry's first recessed LED luminaires designed specifically for slope ceiling installations. Now, these 6-inch, IC-rated downlights are available with Juno WarmDim, providing the warmth and atmosphere of incandescent dimming while offering the energy efficiency and longevity of LED fixtures. They produce a brilliant 900 lumens from just 18 watts and are offered with open or lensed trims for new construction applications. Juno standard slope LED downlights accommodate ceilings with 2/12 to 6/12 pitch (9° to 27°); super-slope accommodates 7/12 to 12/12 pitch (30° to 45°).



- A.** Proprietary patented WarmDim LED light engine features micro-processor controlled dimming that replicates the warmth of incandescent dimming. Dims from 3000K CCT at full lumen output to a warm 2000K while maintaining 90 minimum CRI throughout the range. (Patent US 8,710,754)
- B.** Dedicated 120-volt LED driver is compatible with readily available incandescent, magnetic low-voltage, and electronic low-voltage dimmers.
- C.** Adjustable slider plate enables the LED light engine and reflector to be positioned perpendicular to the floor throughout the pitch range and includes 1/4-inch adjustment indicators for consistent fixture-to- fixture alignment.
- D.** High-efficiency optic system features a computer-optimized reflector and high-transmission diffusing lens that conceals the LEDs and produces uniform aperture luminance. Specifically designed for slope applications, the reflector provides optimum performance and obscures housing internals regardless of pitch angle.
- E.** Superior thermal management is achieved by integrating the extruded aluminum heat sink and cast aluminum slider plate directly into the housing, assuring remarkable LED longevity. Service life is rated at 50,000 hours with 70% lumen maintenance.



## Juno 6" WarmDim Standard Slope Ceiling LED 2/12 to 6/12 Pitch (9° to 27°)



Dedicated LED, Air-Loc® sealed slope ceiling new construction housing with patented WarmDim®. LED color temperature warms while dimming to emulate the dimming performance of traditional incandescent light sources. IC rated construction housing can be completely covered with insulation. Fully sealed housing stops infiltration and exfiltration of air, reducing heating and air cooling costs without the use of additional gaskets. LED housing is designed to provide 50,000 hours of life and is compatible with standard Juno trims. 5 year limited warranty on LED components.

Example: IC926LED WD G4 09LM 30K 90CRI 120 FRPC

Series	Dynamic Feature	Gen	Lumens	CCT	CRI	Voltage/Driver
IC926LED	WD	G4	09LM	30K 3000K	90CRI	120 FRPC
6" Standard Slope Ceiling	WarmDim®		900 Lumens			120V Only; Forward Phase/ELV Dimming

## Juno 6" WarmDim Super Slope Ceiling LED 7/12 to 12/12 Pitch (30° to 45°)



Dedicated LED, Air-Loc® sealed super slope ceiling new construction housing with patented WarmDim®. LED color temperature warms while dimming to emulate the dimming performance of traditional incandescent light sources. IC rated construction housing can be completely covered with insulation. Fully sealed housing stops infiltration and exfiltration of air, reducing heating and air cooling costs without the use of additional gaskets. LED housing is designed to provide 50,000 hours of life and is compatible with standard Juno trims. 5 year limited warranty on LED components.

Example: IC928LED WD G4 09LM 30K 90CRI 120 FRPC

Series	Dynamic Feature	Gen	Lumens	CCT	CRI	Voltage/Driver
IC928LED	WD	G4	09LM	30K 3000K	90CRI	120 FRPC
6" Super Slope Ceiling	WarmDim®		900 Lumens			120V Only; Forward Phase/ELV Dimming

## Juno Slope Ceiling Trims

Open and lensed trims feature shadow-free, knife-edge rings that blend unobtrusively with sloped ceilings. Drawn from a selection of existing Juno trims, this collection offers an extensive variety of styles, colors, and finishes.

### Standard Slope Open Trims



#### Baffle

- 614 BWH<sup>1</sup> Black Baffle
- 614 BSC<sup>1</sup> Black Baffle
- 614 BABZ<sup>1</sup> Black Baffle
- 614 BBL<sup>1</sup> Black Baffle
- 614 WWH White Baffle

### Super Slope Open Trims



#### Baffle

- 604 BWH<sup>1</sup> Black Baffle
- 604 BSC<sup>1</sup> Black Baffle
- 604 BABZ<sup>1</sup> Black Baffle
- 604 BBL<sup>1</sup> Black Baffle
- 604 WWH White Baffle



#### Cone

- 620 CWH Clear Alzak®
- 620 BWH Black Alzak®
- 620 HZWH Haze
- 620 HZSC Haze
- 620 WWH White
- 620 WHZWH Wheat Haze
- 620 WHZABZ Wheat Haze



#### Cone

- 602 CWH Clear Alzak®
- 602 BWH<sup>1</sup> Black Alzak®
- 602 HZWH Haze
- 602 HZSC Haze
- 602 WWH White
- 602 WHZWH Wheat Haze
- 602 WHZABZ Wheat Haze

### Lensed Trims



- Baffle, Regressed Frosted Dome Lens
- 6330 WWH White



- Baffle, Regressed Frosted Dome Lens
- 6033 WWH White

<sup>1</sup> Not ENERGY STAR® certified.

ENERGY STAR® and T24 certification is dependent on trim finish. See housing spec sheet for specific information for each trim.

# Juno® WarmDim® LED Downlights



## Setting the mood with exceptionally accurate, high-performance illumination

Juno WarmDim exclusive Mainstream Dynamic technology (Patent US 8,710,754) has taken LED downlighting in an exciting new direction. This patented innovation warms LED color temperatures during dimming, recreating the warm glow of incandescent dimming, while offering extraordinary energy efficiency and service life.

The WarmDim feature is available throughout an expanded range of Juno high-performance LED downlights. These fixtures feature exceptionally accurate color rendering in excess of 90 CRI. They are also incredibly efficient, consuming as little as 20% of the energy of incandescents and about half the energy of CFLs. Rated service life is a remarkable 50,000 hours at 70% lumen maintenance.



### A technological breakthrough

Juno WarmDim brings atmosphere and romance to the world of LED lighting. Unlike traditional LED dimming, WarmDim downlights warm as they dim, creating an ambiance previously exclusive to incandescent dimming. The proprietary micro-processor controlled light engine dims continuously from 3000K CCT at full luminance, down to the warm glow of 2000K. From residential dining rooms to hospitality guest rooms, now you can match the mood to every occasion.

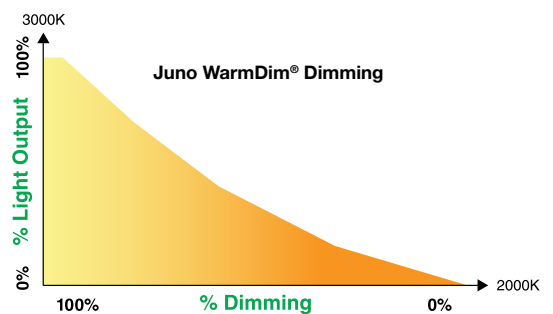
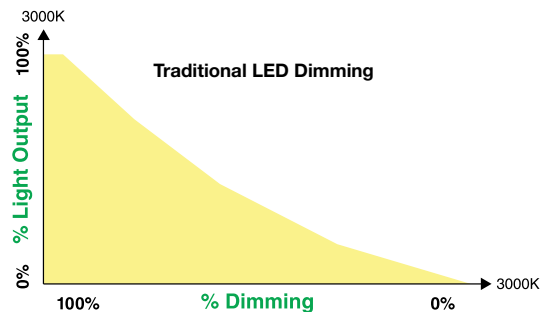


Photo Credits:  
Cover: Residential kitchen, St. Charles, Illinois  
Pages 1 and back cover: Fairview Builders, LLC Custom Home Builder, Model Home – Cliffs at Mountain Park, Marietta, South Carolina

