



T8

14.5T8/BCP/48-850/MF18/G 25/1

Our TLEDs are available in InstantFit (Type A / Type C) or MainsFit (Ballast bypass / Type B) versions. The InstantFit lamps work on a broad variety of ballasts and LED drivers. Only InstantFit has over 15,000 lamp & ballast combinations delivering even light output, energy savings and a long lifetime. Our MainsFit products feature a double-ended design, simplifying installation while a proprietary safety circuit minimizes a shock risk. Lamp sizes range from 2-foot to 8-foot and U-bend with a variety of lumen outputs.

Product data

General information		Lamp Current (Max)		Lamp Current (Min)		Starting Time (Nom)		Warm Up Time to 60% Light (Nom)		UL Type		Power Factor (Nom)		Voltage (Nom)	
Cap-Base	G13 [Medium Bi-Pin Fluorescent]		125 mA		58 mA		0.5 s		0.5 s		TLED_Type B; UL classified double end		0.9		120-277 V
EU RoHS compliant	Yes														
Nominal Lifetime (Nom)	50000 h														
Switching Cycle	50000X														
Light technical		Temperature		Controls and dimming		Mechanical and housing									
Color Code	850 [CCT of 5000K]	T-Ambient (Max)	45 °C	Dimmable	Limited	Bulb Finish	Frosted								
Beam Angle (Nom)	240 °	T-Ambient (Min)	-20 °C												
Luminous Flux (Nom)	1800 lm	T-Storage (Max)	65 °C												
Color Designation	Daylight [Daylight]	T-Storage (Min)	-40 °C												
Correlated Color Temperature (Nom)	5000 K	T-Case Maximum (Nom)	70 °C												
Luminous Efficacy (rated) (Nom)	124.00 lm/W														
Color Consistency	<5														
Color Rendering Index (Nom)	80														
LLMF At End Of Nominal Lifetime (Nom)	70 %														
Operating and electrical															
Input Frequency	50 to 60 Hz														
Power (Rated) (Nom)	14.5 W														

T8

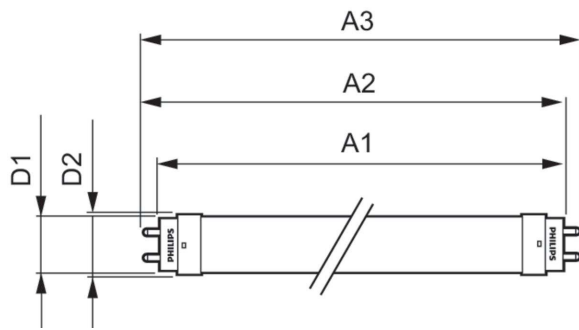
Bulb Material	Glass
Product Length	1200 mm
Bulb Shape	Tube, double-ended
Approval and application	
Energy Saving Product	Yes
Approval Marks	RoHS compliance UL certificate DLC compliance

Product data

Order product name	14.5T8/BCP/48-850/MF18/G 25/1
--------------------	-------------------------------

EAN/UPC - Product	046677577780
Order code	577783
Numerator - Quantity Per Pack	1
Numerator - Packs per outer box	25
Material Nr. (12NC)	929003474704
Net Weight (Piece)	0.190 kg
Model Number	9290034747

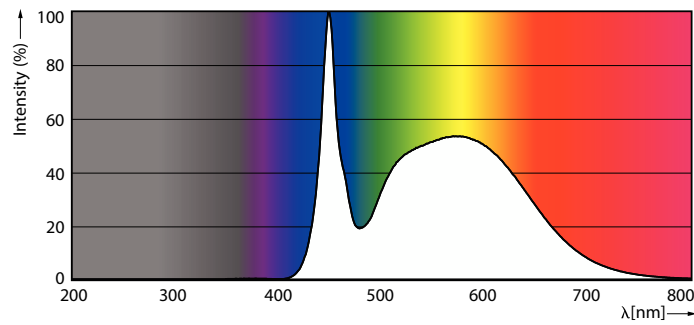
Dimensional drawing



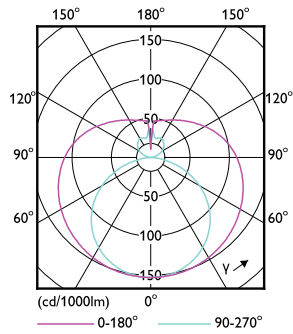
14.5T8/COR/48-850/MF18/G 25/1

Product	D1	D2	A1	A2	A3
14.5T8/COR/48-850/MF18/G 25/1	25.7 mm	28 mm	1198.2 mm	1205.3 mm	1212.4 mm

Photometric data

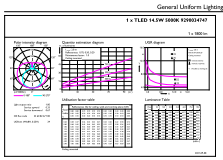


LEDtube COR NAM2 14,5W G13 1800lm 850-POC



LEDtube COR NAM2 14,5W G13 1750lm-LDD

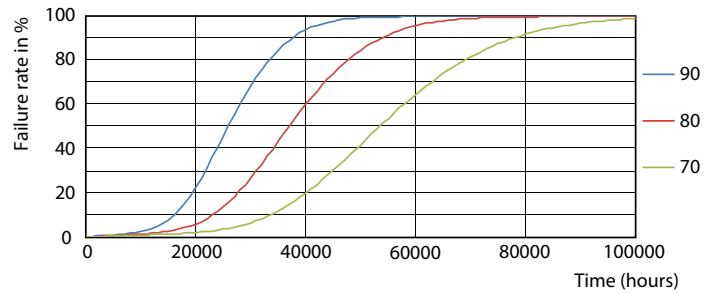
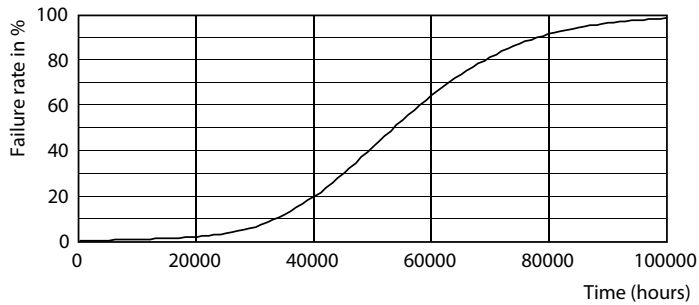
Photometric data



© 2021 Philips Lighting B.V. Page 11 of 11

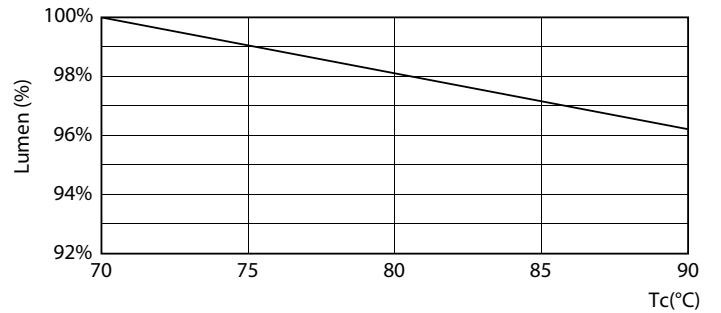
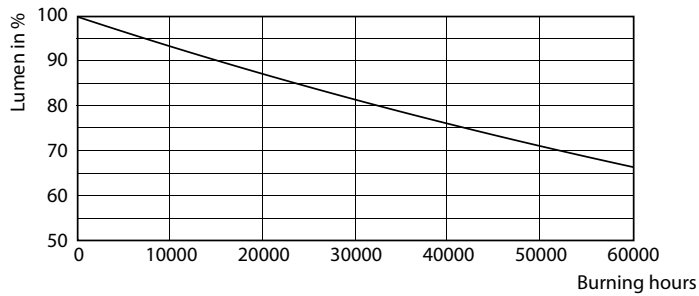
LEDtube COR NAM2 14,5W G13 1800lm 850-GUL

Lifetime



LEDtube 50K-LED

LEDtube 50K 7090 FailureRate-LED

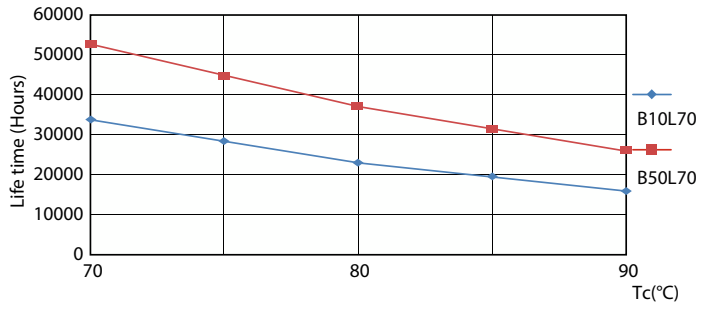


LEDtube 50K-LMP

LEDtube COR NAM2 14,5W 50K LumenVsTc-LMP

T8

Lifetime



LEDtube 50K 7090 LifetimeVsTc-LED

