



# T8

## 14.5T8/BCP/48-835/MF17/G 25/1

Our TLEDs are available in InstantFit (Type A / Type C) or MainsFit (Ballast bypass / Type B) versions. The InstantFit lamps work on a broad variety of ballasts and LED drivers. Only InstantFit has over 15,000 lamp & ballast combinations delivering even light output, energy savings and a long lifetime. Our MainsFit products feature a double-ended design, simplifying installation while a proprietary safety circuit minimizes a shock risk. Lamp sizes range from 2-foot to 8-foot and U-bend with a variety of lumen outputs.

### Product data

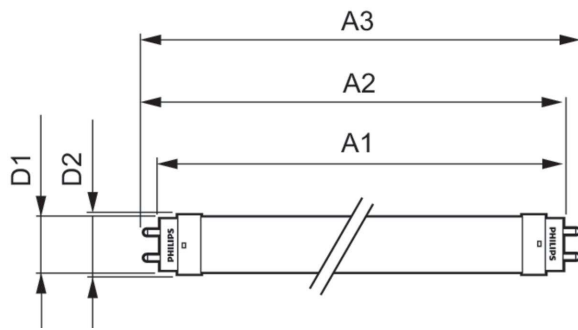
General information		Lamp Current (Max)		Lamp Current (Min)		Starting Time (Nom)		Warm Up Time to 60% Light (Nom)		UL Type		Power Factor (Nom)		Voltage (Nom)	
Cap-Base	G13 [ Medium Bi-Pin Fluorescent]		125 mA		58 mA		0.5 s		0.5 s		TLED_Type B; UL classified double end		0.9		120-277 V
EU RoHS compliant	Yes														
Nominal Lifetime (Nom)	50000 h														
Switching Cycle	50000X														
Light technical		Temperature		Controls and dimming		Mechanical and housing									
Color Code	835 [ CCT of 3500K]	T-Ambient (Max)	45 °C	Dimmable	Limited	Bulb Finish	Frosted								
Beam Angle (Nom)	240 °	T-Ambient (Min)	-20 °C												
Luminous Flux (Nom)	1750 lm	T-Storage (Max)	65 °C												
Color Designation	White (WH)	T-Storage (Min)	-40 °C												
Correlated Color Temperature (Nom)	3500 K	T-Case Maximum (Nom)	70 °C												
Luminous Efficacy (rated) (Nom)	120.00 lm/W														
Color Consistency	<6														
Color Rendering Index (Nom)	80														
LLMF At End Of Nominal Lifetime (Nom)	70 %														
Operating and electrical															
Input Frequency	50 to 60 Hz														
Power (Rated) (Nom)	14.5 W														

# T8

Bulb Material	Glass
Product Length	1200 mm
Bulb Shape	Tube, double-ended
<b>Approval and application</b>	
Energy Saving Product	Yes
Approval Marks	RoHS compliance UL certificate DLC compliance
<b>Product data</b>	
Order product name	14.5T8/BCP/48-835/MF17/G 25/1

EAN/UPC - Product	046677577766
Order code	577767
Numerator - Quantity Per Pack	1
Numerator - Packs per outer box	25
Material Nr. (12NC)	929003474504
Net Weight (Piece)	0.190 kg
Model Number	9290034745

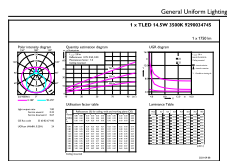
## Dimensional drawing



14.5T8/COR/48-835/MF17/G 25/1

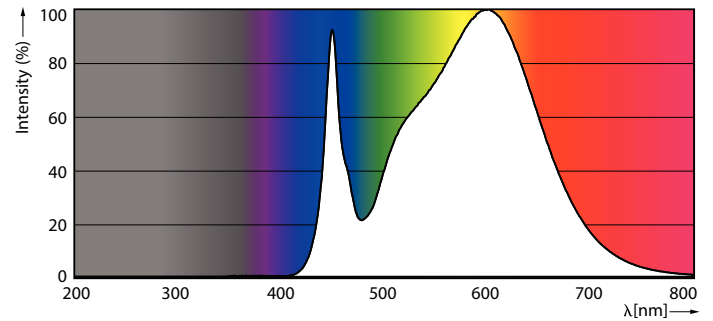
Product	D1	D2	A1	A2	A3
14.5T8/COR/48-835/MF17/G 25/1	25.7 mm	28 mm	1198.2 mm	1205.3 mm	1212.4 mm

## Photometric data



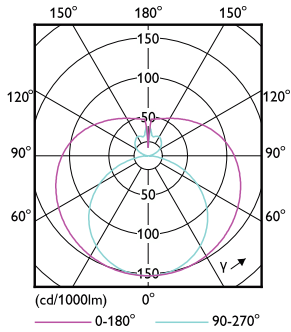
General Uniform Lighting  
LEDtube COR NAM2 14,5W G13 1750lm 835-GUL

LEDtube COR NAM2 14,5W G13 1750lm 835-GUL



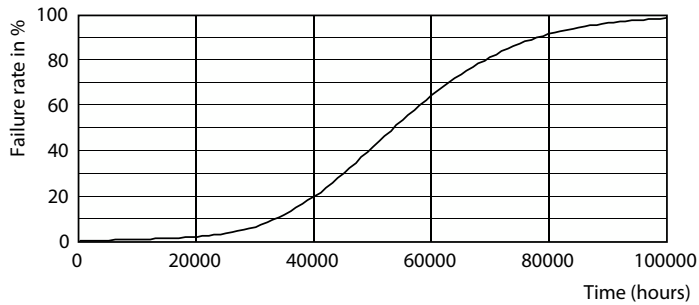
LEDtube COR NAM2 14,5W G13 1750lm 835-POC

Photometric data

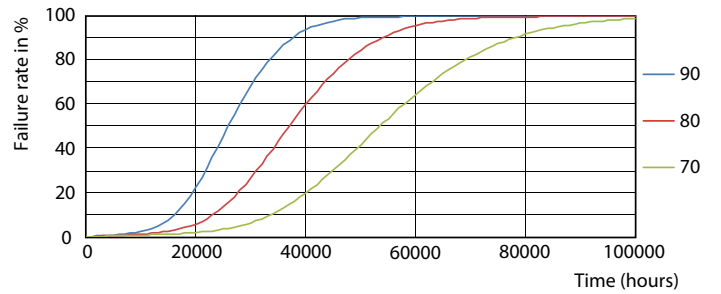


LEDtube COR NAM2 14,5W G13 1750lm-LDD

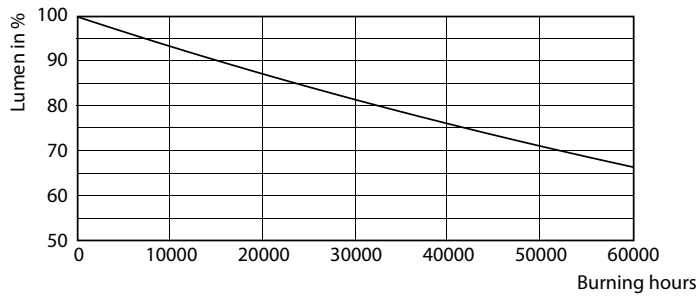
Lifetime



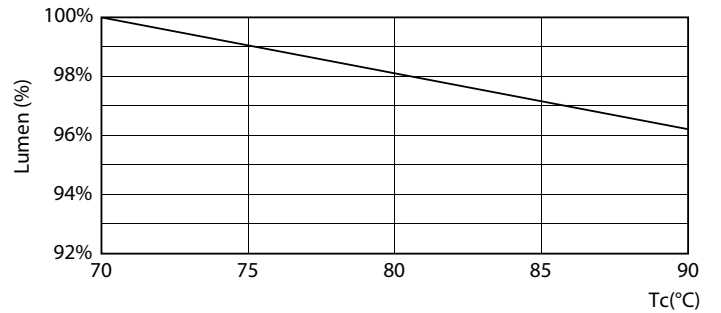
LEDtube 50K-LED



LEDtube 50K 7090 FailureRate-LED



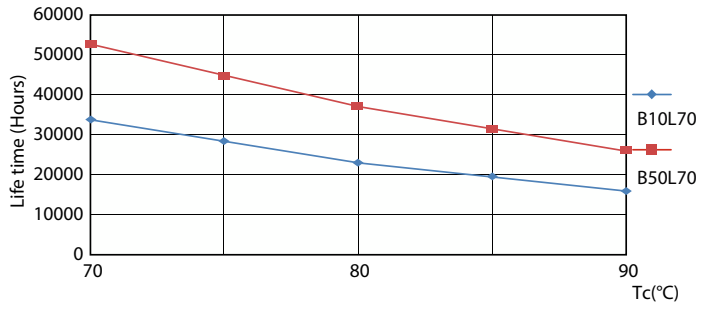
LEDtube 50K-LMP



LEDtube COR NAM2 14,5W 50K LumenVsTc-LMP

# T8

## Lifetime



LEDtube 50K 7090 LifetimeVsTc-LED

