

Shelves and Mounting Hardware

Mounting accessories to aid in the installation of IT equipment and secure racks into position

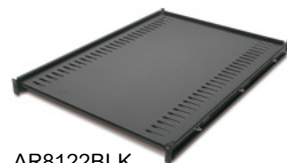
Shelving

Fixed and sliding shelves to enable the mounting of tower units, monitors, and other equipment into the rack environment.

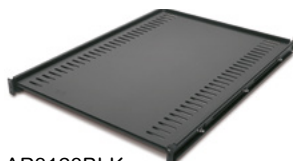
- **AR8105BLK** — Fixed shelf 50 lb. (22 kg)
- **AR8122BLK** — Fixed shelf 250 lb. (113 kg)
- **AR8123BLK** — Sliding shelf 100 lb. (45 kg)
- **AR8128BLK** — Sliding shelf 200 lb. (90 kg)
- **AR8422** — Double-side fixed shelf for two-post rack
- **AR8126ABLK** — 17 in. (431 mm) sliding keyboard shelf
- **AR8127BLK** — 19 in. (482 mm) sliding rotating keyboard shelf
- **AR8006A** — Miscellaneous equipment support rails for 24 in. (600 mm) wide enclosure



AR8105BLK



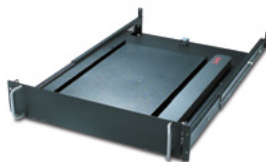
AR8122BLK



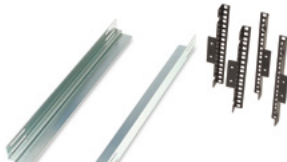
AR8128BLK



AR8422



AR8126ABLK/AR8127BLK



AR8006A

Bolt-down and stabilization

Stabilization plates and hardware to prevent tip over in stand-alone rack applications and meet specific anchoring requirements.

- **AR7700** — NetShelter SX stabilization plate to prevent tipping when sliding out equipment
- **AR7701** — NetShelter SX bolt-down kit — meets IBC seismic requirements for moderate seismic zones
- **AR7701-S** — NetShelter SX bolt-down kit — meets IBC seismic requirements for high seismic zones



AR7701 & AR7701-S



AR7700

Miscellaneous mounting brackets

Variety of mounting brackets for mounting IT equipment.

- **AR7711** — Zero-U multipurpose accessory mounting bracket for side mounting of 1U/2U products and rack PDUs
- **AR8150BLK** — 23 in. (584 mm) to 19 in. (482 mm) mounting adapter brackets for use with AR7510 23 in. (584 mm) EIA mounting rails



AR7711



AR8150BLK

Hardware kits

Available for additional hardware needs or to accommodate equipment mounted in varying mounting options.

- **AR8100** — M6 cage nuts and screws, qty. 32
- **AR8400** — #12-24 screws, qty. 100
- **AR8005** — #10-32 cage nuts, qty. 36



AR8100

NetShelter Enclosures with Shock Packaging & Shock Pallet

Rack & Stack made easy for equipment integrators

Secure shipping, fast deployment, and enhanced integrated solutions with APC by Schneider Electric enclosures with shock packaging and shock pallet. These solutions offer:

- Lower physical layer engineering and production costs
- Faster integration time of overall IT solution
- Reduction in physical layer floor space requirements during rack & stack
- Reduction in packaging and recycling of physical layer materials
- Certifications and reference designs with top IT manufacturers

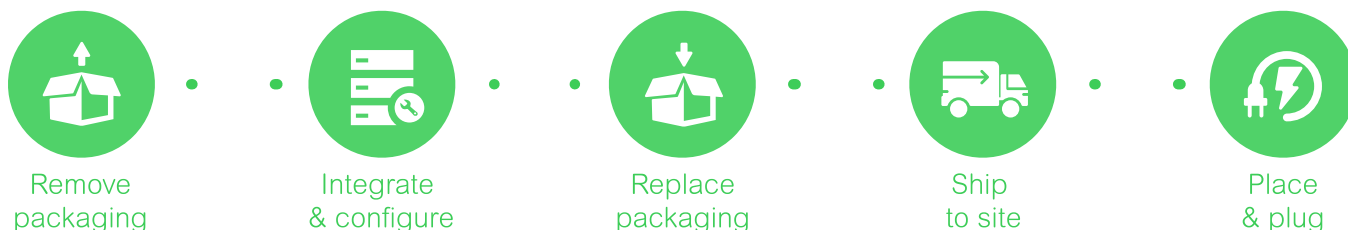


Includes:

- Shock pallet
- Cardboard outer wrap and foam
- Plastic covering to keep dust debris out
- Ramp
- Cabinets include heavy duty casters, fixed and swivel for maneuverability



How does it work?



Secure shipping and fast deployment with Cisco + APC by Schneider Electric

Today's converged and hyperconverged infrastructures and off-premises data centers require fully populated IT cabinets to be more securely shipped to customer or colocation sites for fast, low-risk deployment. The loss of or damage to even a single rack can run up to a million dollars or more.

APC by Schneider Electric delivers a Cisco-validated shipping solution that simplifies Cisco UCS "rack and stack" and protects IT equipment to lower costs, reduce risk, and provide speed and flexibility for deployment.



NetShelter Enclosures with Shock Packaging & Shock Pallet

NetShelter SKU	U-space	Height	Width	Depth	Max mounting depth	Shipping load capacity	Packaged
NetShelter SX							
AR3003SP	12U	658mm (25.9 in.)	600mm (24 in.)	900mm (35.4 in.)	756mm (29.8 in.)	272kg (600 lb.)	Shock pallet, packaging, one-time use ramp
AR3006SP	18U	925mm (36.4 in.)	600mm (24 in.)	900mm (35.4 in.)	756mm (29.8 in.)	408kg (900 lb.)	Shock pallet, packaging, one-time use ramp
AR3103SP	12U	658mm (25.9 in.)	600mm (24 in.)	1070mm (42 in.)	921mm (36.3 in.)	272kg (600 lb.)	Shock pallet, packaging, one-time use ramp
AR3106SP	18U	925mm (36.4 in.)	600mm (24 in.)	1070mm (42 in.)	921mm (36.3 in.)	408kg (900 lb.)	Shock pallet, packaging, one-time use ramp
AR3104SP1	24U	1200mm (47 in.)	600mm (24 in.)	1070mm (42 in.)	915mm (36 in.)	907kg (2000 lb.)	Shock pallet, packaging, one-time use ramp
AR3100SP	42U	1991mm (78.4 in.)	600mm (24 in.)	1070mm (42 in.)	915mm (36 in.)	907kg (2000 lb.)	Shock pallet, packaging, one-time use ramp
AR3105SP	45U	2124mm (83 in.)	600mm (24 in.)	1070mm (42 in.)	915mm (36 in.)	907kg (2000 lb.)	Shock pallet, packaging, one-time use ramp
AR3107SP	48U	2258mm (88.9 in.)	600mm (24 in.)	1070mm (42 in.)	915mm (36 in.)	907kg (2000 lb.)	Shock pallet, packaging, one-time use ramp
AR3150SP	42U	1991mm (78.4 in.)	750mm (30 in.)	1070mm (42 in.)	915mm (36 in.)	907kg (2000 lb.)	Shock pallet, packaging, one-time use ramp
AR3155SP	45U	2124mm (83 in.)	750mm (30 in.)	1070mm (42 in.)	915mm (36 in.)	907kg (2000 lb.)	Shock pallet, packaging, one-time use ramp
AR3157SP	48U	2258mm (88.9 in.)	750mm (30 in.)	1070mm (42 in.)	915mm (36 in.)	907kg (2000 lb.)	Shock pallet, packaging, one-time use ramp
AR3300SP	42U	1991mm (78.4 in.)	600mm (24 in.)	1200mm (48 in.)	1048mm (41.3 in.)	907kg (2000 lb.)	Shock pallet, packaging, one-time use ramp
AR9300SP*	42U	1991mm (78.4 in.)	600mm (24 in.)	1200mm (48 in.)	1048mm (41.3 in.)	1587kg (3500 lb.)	Shock pallet & packaging
AR9300SP-R*	42U	1991mm (78.4 in.)	600mm (24 in.)	1200mm (48 in.)	1048mm (41.3 in.)	1587kg (3500 lb.)	Shock pallet, packaging, and reusable ramp
AR3305SP	45U	2124mm (83 in.)	600mm (24 in.)	1200mm (48 in.)	1048mm (41.3 in.)	907kg (2000 lb.)	Shock pallet, packaging, one-time use ramp
AR3307SP	48U	2258mm (88.9 in.)	600mm (24 in.)	1200mm (48 in.)	1048mm (41.3 in.)	907kg (2000 lb.)	Shock pallet, packaging, one-time use ramp
AR9307SP*	48U	2258mm (88.9 in.)	600mm (24 in.)	1200mm (48 in.)	1048mm (41.3 in.)	1587kg (3500 lb.)	Shock pallet & packaging
AR9307SP-R*	48U	2258mm (88.9 in.)	600mm (24 in.)	1200mm (48 in.)	1048mm (41.3 in.)	1587kg (3500 lb.)	Shock pallet, packaging, and reusable ramp
AR3350SP	42U	1991mm (78.4 in.)	750mm (30 in.)	1200mm (48 in.)	1048mm (41.3 in.)	907kg (2000 lb.)	Shock pallet, packaging, one-time use ramp
AR3355SP	45U	2124mm (83 in.)	750mm (30 in.)	1200mm (48 in.)	1048mm (41.3 in.)	907kg (2000 lb.)	Shock pallet, packaging, one-time use ramp
AR3357SP	48U	2258mm (88.9 in.)	750mm (30 in.)	1200mm (48 in.)	1048mm (41.3 in.)	907kg (2000 lb.)	Shock pallet, packaging, one-time use ramp
NetShelter CX							
AR4018SP	18U	1015mm (39 in.)	750mm (30 in.)	1130mm (44 in.)	880mm (34.6 in.)	317kg (700 lb.)	Shock pallet & packaging
AR4024SP	24U	1285mm (50 in.)	750mm (30 in.)	1130mm (44 in.)	880mm (34.6 in.)	363kg (800 lb.)	Shock pallet & packaging
NetShelter Wall-mount							
AR106V	6U	648mm (25.5 in.)	965mm (38 in.)	331mm (13 in.)	762mm (30 in.)	113kg (250 lb.)	Shock packaging
AR106VI	6U	648mm (25.5 in.)	965mm (38 in.)	331mm (13 in.)	762mm (30 in.)	113kg (250 lb.)	Shock packaging

*For availability check apc.com or request further details from your APC sales representative.