

## CR460 components



CR463L - basic contactor

### Basic contactor

Combined with other appropriate components, basic contactors allow configuration into any available electrically or mechanically held model. Includes two power poles.

| Contact configuration | Product number |
|-----------------------|----------------|
| 1NO-1NC               | CR463L11A*A    |
| 2NO                   | CR463L20A*A    |

Replace \* in the product number with the appropriate digits from the Coil Voltage table. The resulting product number will be for an assembled contactor with no additional auxiliary contacts, pilot devices, pilot lights, control circuit fuses or CPTs.

### Coil voltage

| AC, 60Hz        | AC, 50Hz    | Electrically held | Mechanically held | Coil digit |
|-----------------|-------------|-------------------|-------------------|------------|
| 24V             | 20V         | •                 | •                 | C          |
| 28V             | 24V         | •                 | •                 | D          |
| <b>115-120V</b> | <b>110V</b> | •                 | •                 | <b>J</b>   |
| 200-208V        | -           | •                 | •                 | L          |
| 230-240V        | 220V        | •                 | •                 | S          |
| <b>277V</b>     | <b>240V</b> | •                 | •                 | <b>N</b>   |
| 347V            | -           | •                 | <sup>1</sup>      | T          |
| 460-480V        | 440V        | •                 | <sup>1</sup>      | U          |
| 575-600V        | 550V        | •                 | <sup>1</sup>      | Y          |

<sup>1</sup>Control module switching device rated 277V max; use CPT for higher voltage



CR460XP - power poles

### Power poles

CR460 series basic contactors accept up to 6 single- or double-pole power poles. These can be used to form up to:

- 12 NO poles when 6 double-poles are used in the NO positions (1-6) or
- 8 NC poles with 4 double-poles in the NC positions (1-4) + NO poles with 2 double-poles in the 2 NO positions (5-6)

| Type        | Product number |
|-------------|----------------|
| Single pole | CR460XP31      |
| Double pole | CR460XP32      |

Packaged individually and overpacked in multiple of 5.



CR460XM - conversion kits

### Conversion kits for mechanically held contactors

Kits for converting electrically held contactors to a mechanically held version. Kits include control module, latch, latch cover and auxiliary contact(s) plus installation instructions. Conversion kits are suitable for coil voltages 277V and below. Use CPT to reduce coil voltage if line voltage is higher than 277V.

| Coil voltage range | Control circuit wiring | Auxiliary contacts <sup>1</sup> | Control circuit voltage | Product number |
|--------------------|------------------------|---------------------------------|-------------------------|----------------|
| 24-277 Vac         | 2-wire                 | (1) 1 pole                      | 24 Vac                  | CR460XMB       |
| 24-277 Vac         | 2-wire                 | (1) 1 pole                      | 110-120 Vac             | CR460XMC       |
| 24-277 Vac         | 2-wire                 | (1) 1 pole                      | 200-277 Vac             | CR460XMD       |
| 24-277 Vac         | 2-wire                 | (1) 1 pole                      | 12-28 Vdc               | CR460XME       |
| 24-277 Vac         | 3-wire                 | (2) 1 pole                      | 24 Vac                  | CR460XMM       |
| 24-277 Vac         | 3-wire                 | (2) 1 pole                      | 110-120 Vac             | CR460XMN       |
| 24-277 Vac         | 3-wire                 | (2) 1 pole                      | 200-277 Vac             | CR460XMP       |
| 24-277 Vac         | 3-wire                 | (2) 1 pole                      | 12-28 Vdc               | CR460XMR       |

<sup>1</sup>Auxiliary contact block required for feedback loop, alternate 2 pole blocks may be required for status feedback and/or pilot lights. See fuse and transformer kits table on page 3-11 for CPT selection. See wiring diagrams on page 3-23.

## CR460 components



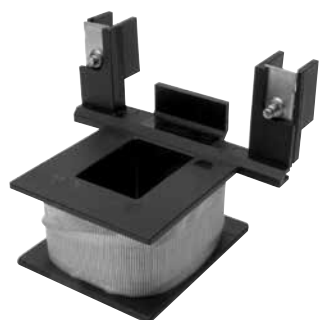
CR460XB - auxiliary contacts

### Auxiliary contacts

Each contactor may use one single or one double auxiliary contact block on each side of the base. When installed on the left side the contacts are NO, when installed on the right side the contacts are NC. This allows a total of 2NO +2NC contacts maximum.

| Type        | Product number |
|-------------|----------------|
| Single pole | CR460XB1       |
| Double pole | CR460XB2       |

See additional auxiliary contacts tables on pages 3-15 and 3-19 for contact selection data.



CR460XC - spare coils

### Spare coils

| Coil voltage @ 60Hz | Coil voltage @ 50Hz | Product number |
|---------------------|---------------------|----------------|
| 24                  | 20                  | CR460XCC       |
| 28                  | 24                  | CR460XCD       |
| 115-120             | 110                 | CR460XCJ       |
| 200-208             | -                   | CR460XCL       |
| 230-240             | 220                 | CR460XCS       |
| 277                 | 240                 | CR460XCN       |
| 347                 | -                   | CR460XCT       |
| 460-480             | 440                 | CR460XCU       |
| 575-600             | 550                 | CR460XCY       |

## CR460 enclosure accessories



Extended button

### Enclosure kits (with no CPT or pilot light devices, lights)

| Description                                         | Enclosure type          | Product number |
|-----------------------------------------------------|-------------------------|----------------|
| <b>Standard</b>                                     |                         |                |
| With no CPT or pilot device                         | NEMA Type 1             | CR460XE1B      |
| With no CPT or pilot device                         | NEMA Type 1 flush mount | CR460XE8B      |
| With no CPT or pilot device                         | NEMA Type 12/3R         | CR460XE2B      |
| <b>Oversized</b>                                    |                         |                |
| With provision for CPT and/or pilot devices, lights | NEMA Type 1             | CR460XE1D      |
| With provision for CPT and/or pilot devices, lights | NEMA Type 12/3R         | CR460XE2D      |
| With provision for CPT and/or pilot devices, lights | NEMA Type 4             | CR460XE4D      |

See pages 3-25 to 3-26 for enclosure dimensions.

### Pilot devices (requires oversize enclosure)

| Pilot device type                                                                 | For use with                                                                                                               | Product number |
|-----------------------------------------------------------------------------------|----------------------------------------------------------------------------------------------------------------------------|----------------|
| Momentary ON/OFF push button                                                      | Electrically held with interlock aux.<br>Mechanically held 3-wire control module                                           | CR460XP1       |
| Maintained ON/OFF or OFF/AUTO selector switch                                     | Electrically held w/o interlock aux.<br>Mechanically held 2-wire control module<br>Mechanically held 3-wire control module | CR460XP2       |
| Momentary ON/OFF selector switch, spring return to center                         | Electrically held with interlock aux.<br>Mechanically held 3-wire control module                                           | CR460XP3       |
| Maintained H-O-A or ON/OFF/AUTO keyed selector switch                             | Electrically held w/o interlock aux.<br>Mechanically held 3-wire control module                                            | CR460XP4       |
| Maintained H-O-A or ON/OFF/AUTO keyed selector switch (key removal all positions) | Electrically held w/o interlock aux.<br>Mechanically held 3-wire control module                                            | CR460XP5       |

Enclosure accessory kits contain accessory and complete installation wiring and hardware. Some kits contain multiple nameplates for alternate markings.



Standard

### Pilot lights (requires oversize enclosure)

| Pilot light type | Nameplate | Product number |
|------------------|-----------|----------------|
| Standard         | ON or OFF | CR460XLB*      |
| Push-to-test     | ON or OFF | CR460XLD*      |

Pilot light kits come with interchangeable red and green lenses. Pilot lights may require auxiliary contacts. Replace \* in pilot light product number with appropriate voltage digit from the table below. See extra contact limitations in the additional auxiliary contacts tables on pages 3-17 and 3-21.

### Pilot light voltage

| Voltage   | Digit |
|-----------|-------|
| 24 Vac/dc | C     |
| 120 Vac   | J     |
| 208 Vac   | L     |
| 240 Vac   | S     |
| 277 Vac   | N     |
| 347 Vac   | T     |
| 480 Vac   | U     |
| 600 Vac   | Y     |



Push-to-test