

CR460 components



CR463L - basic contactor

Basic contactor

Combined with other appropriate components, basic contactors allow configuration into any available electrically or mechanically held model. Includes two power poles.

Contact configuration	Product number
1NO-1NC	CR463L11A*A
2NO	CR463L20A*A

Replace * in the product number with the appropriate digits from the Coil Voltage table. The resulting product number will be for an assembled contactor with no additional auxiliary contacts, pilot devices, pilot lights, control circuit fuses or CPTs.

Coil voltage

AC, 60Hz	AC, 50Hz	Electrically held	Mechanically held	Coil digit
24V	20V	•	•	C
28V	24V	•	•	D
115-120V	110V	•	•	J
200-208V	-	•	•	L
230-240V	220V	•	•	S
277V	240V	•	•	N
347V	-	•	¹	T
460-480V	440V	•	¹	U
575-600V	550V	•	¹	Y

¹Control module switching device rated 277V max; use CPT for higher voltage

Power poles

CR460 series basic contactors accept up to 6 single- or double-pole power poles. These can be used to form up to:

- 12 NO poles when 6 double-poles are used in the NO positions (1-6) or
- 8 NC poles with 4 double-poles in the NC positions (1-4) + NO poles with 2 double-poles in the 2 NO positions (5-6)



CR460XP - power poles

Type	Product number
Single pole	CR460XP31
Double pole	CR460XP32

Packaged individually and overpacked in multiple of 5.

Conversion kits for mechanically held contactors

Kits for converting electrically held contactors to a mechanically held version. Kits include control module, latch, latch cover and auxiliary contact(s) plus installation instructions. Conversion kits are suitable for coil voltages 277V and below. Use CPT to reduce coil voltage if line voltage is higher than 277V.



CR460XM - conversion kits

Coil voltage range	Control circuit wiring	Auxiliary contacts ¹	Control circuit voltage	Product number
24-277 Vac	2-wire	(1) 1 pole	24 Vac	CR460XMB
24-277 Vac	2-wire	(1) 1 pole	110-120 Vac	CR460XMC
24-277 Vac	2-wire	(1) 1 pole	200-277 Vac	CR460XMD
24-277 Vac	2-wire	(1) 1 pole	12-28 Vdc	CR460XME
24-277 Vac	3-wire	(2) 1 pole	24 Vac	CR460XMM
24-277 Vac	3-wire	(2) 1 pole	110-120 Vac	CR460XMN
24-277 Vac	3-wire	(2) 1 pole	200-277 Vac	CR460XMP
24-277 Vac	3-wire	(2) 1 pole	12-28 Vdc	CR460XMR

¹Auxiliary contact block required for feedback loop, alternate 2 pole blocks may be required for status feedback and/or pilot lights. See fuse and transformer kits table on page 3-11 for CPT selection. See wiring diagrams on page 3-23.

CR460 components



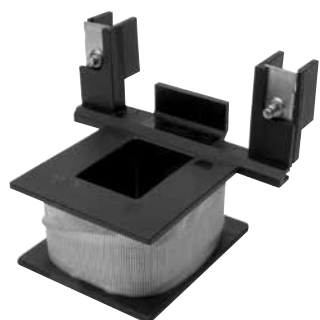
CR460XB - auxiliary contacts

Auxiliary contacts

Each contactor may use one single or one double auxiliary contact block on each side of the base. When installed on the left side the contacts are NO, when installed on the right side the contacts are NC. This allows a total of 2NO +2NC contacts maximum.

Type	Product number
Single pole	CR460XB1
Double pole	CR460XB2

See additional auxiliary contacts tables on pages 3-15 and 3-19 for contact selection data.



CR460XC - spare coils

Spare coils

Coil voltage @ 60Hz	Coil voltage @ 50Hz	Product number
24	20	CR460XCC
28	24	CR460XCD
115-120	110	CR460XCJ
200-208	-	CR460XCL
230-240	220	CR460XCS
277	240	CR460XCN
347	-	CR460XCT
460-480	440	CR460XCU
575-600	550	CR460XCY

CR460 enclosure accessories



Extended button

Enclosure kits (with no CPT or pilot light devices, lights)

Description	Enclosure type	Product number
Standard		
With no CPT or pilot device	NEMA Type 1	CR460XE1B
With no CPT or pilot device	NEMA Type 1 flush mount	CR460XE8B
With no CPT or pilot device	NEMA Type 12/3R	CR460XE2B
Oversized		
With provision for CPT and/or pilot devices, lights	NEMA Type 1	CR460XE1D
With provision for CPT and/or pilot devices, lights	NEMA Type 12/3R	CR460XE2D
With provision for CPT and/or pilot devices, lights	NEMA Type 4	CR460XE4D

See pages 3-25 to 3-26 for enclosure dimensions.

Pilot devices (requires oversize enclosure)

Pilot device type	For use with	Product number
Momentary ON/OFF push button	Electrically held with interlock aux. Mechanically held 3-wire control module	CR460XP1
Maintained ON/OFF or OFF/AUTO selector switch	Electrically held w/o interlock aux. Mechanically held 2-wire control module Mechanically held 3-wire control module	CR460XP2
Momentary ON/OFF selector switch, spring return to center	Electrically held with interlock aux. Mechanically held 3-wire control module	CR460XP3
Maintained H-O-A or ON/OFF/AUTO keyed selector switch	Electrically held w/o interlock aux. Mechanically held 3-wire control module	CR460XP4
Maintained H-O-A or ON/OFF/AUTO keyed selector switch (key removal all positions)	Electrically held w/o interlock aux. Mechanically held 3-wire control module	CR460XP5

Enclosure accessory kits contain accessory and complete installation wiring and hardware. Some kits contain multiple nameplates for alternate markings.



Standard

Pilot lights (requires oversize enclosure)

Pilot light type	Nameplate	Product number
Standard	ON or OFF	CR460XLB*
Push-to-test	ON or OFF	CR460XLD*

Pilot light kits come with interchangeable red and green lenses. Pilot lights may require auxiliary contacts. Replace * in pilot light product number with appropriate voltage digit from the table below. See extra contact limitations in the additional auxiliary contacts tables on pages 3-17 and 3-21.

Pilot light voltage

Voltage	Digit
24 Vac/dc	C
120 Vac	J
208 Vac	L
240 Vac	S
277 Vac	N
347 Vac	T
480 Vac	U
600 Vac	Y



Push-to-test