

## THIN PROFILE, MAGNETIC TRIMS AND COLOR SELECTABILITY FROM BELOW THE CEILING

The SlimLED you know and love is now available with a 5-position CCT selectable switch. Adjustable from below the ceiling, simply remove the faceplate, select your color temperature, then magnetically snap on one of the trim options. The new SlimLED PLUS is an entry-level, budget friendly LED fixture with a thin profile that fits perfectly in low plenum applications and is ideal for residential, and light commercial spaces.



Selectable color temperature is accessible behind the magnetic trim on the face of the fixture.





# SLIMLED+ PLUS

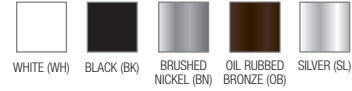


SlimLED PLUS provides efficient output with a thin profile for lower above ceiling applications and the ability to select the color temperature from below the ceiling on site.

## DELIVERED

Up to 1125 lm

## TRIM FINISH



## CCT



27 K, 30 K, 35 K, 40 K and 50 K

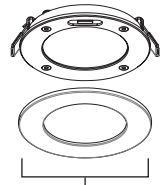
## TRIM



Round Square

## SIZE

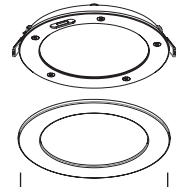
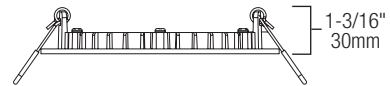
4"



OD: 4-3/4"

121mm

6"



OD: 6-13/16"

173mm

2 trims in every box!

### Ordering Guide - Round

Size	Shape	Wattage	Trim Finish
4" - 6"	Blank : Round	12W - CCT : 4" 16W - CCT : 6"	WHBK : White and Black trims



Highlighted option denotes QuickShip.

### Ordering Guide - Square

Size	Shape	Wattage	Trim Finish
4" - 6"	S : Square	12W - CCT : 4" 16W - CCT : 6"	WH : White



Highlighted option denotes QuickShip.

### Ordering Guide - Trims

Size	Trim Shape	Trim Finish
4" - 6"	12W - RT : 4" Round 12W - ST : 4" Square 16W - RT : 6" Round 16W - ST : 6" Square	BK : Black* BN : Brushed Nickel OB : Oil Rubbed Bronze SL : Silver WH : White*



Highlighted option denotes QuickShip.

\*Available for square trim only.

QuickShip option is available on orders of 100 pieces or less, and will ship within 2 business days of the order being received. QuickShip lead time may vary for orders greater than 100 pieces. No additional shipment rates apply. Subject to availability. For additional options please consult your Liteline representative. Due to our continued efforts to improve our products, product specifications are subject to change without notice. Refer to liteline.com for up to date specifications. Color swatches may not be exact, contact rep for sample

## ACCESSORIES



**60" FLEXIBLE CONNECTOR**  
TO EXTEND THE DISTANCE BETWEEN THE FIXTURE AND DRIVER.



**P-NCMK-1**  
HANGER BAR KIT. INCLUDES HANGER BARS, BRACKETS AND SCREWS.



**VBE-1**  
VAPOR BARRIER EXTENDER. FOR USE IN NEW CONSTRUCTION.



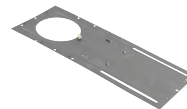
**VBE-2**  
VAPOR BARRIER EXTENDER. FOR USE IN REMODEL.



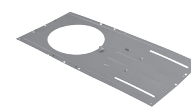
**VBE-3**  
VAPOR BARRIER EXTENDER. FOR USE IN REMODEL.



**VBE-5**  
VAPOR BARRIER EXTENDER. FOR USE IN NEW CONSTRUCTION WITH REDUCED DEPTH.



**P-4020**  
1/4" ROUND PRE-MOUNTING PLATE WITH DRIVER ATTACHMENT CLIP, FOR 4" SLIMLED FIXTURES.



**P-6020**  
3/4" ROUND PRE-MOUNTING PLATE WITH DRIVER ATTACHMENT CLIP, FOR 6" SLIMLED FIXTURES.



**SLM(4/6)P-XLRING(BK/BN/WH)**  
EXTRA LARGE TRIM RING FOR 4" or 6" ROUND SLIMLED PLUS, PLASTIC.

