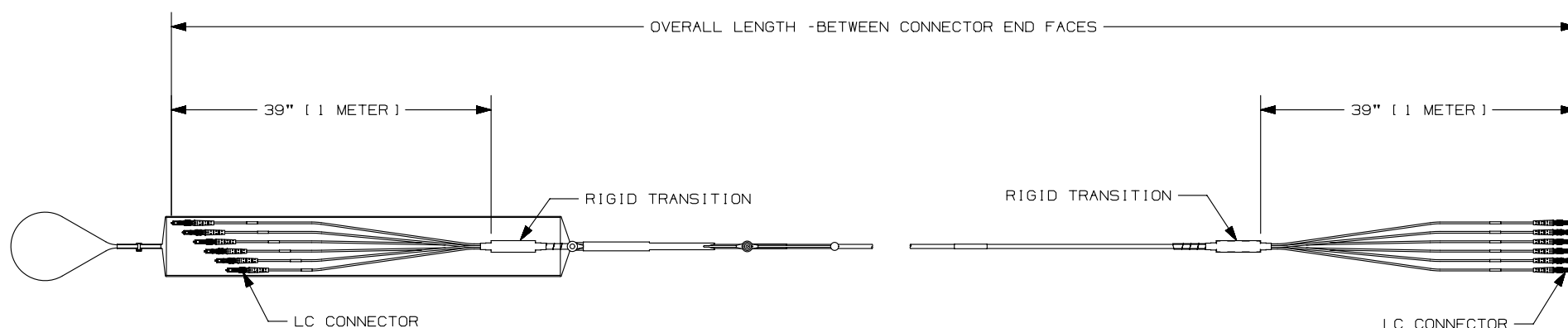
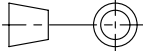


THIS COPY IS PROVIDED ON A RESTRICTED BASIS AND IS NOT TO BE USED IN ANY WAY DETRIMENTAL TO THE INTERESTS OF PANDUIT CORP.

NOTES:

1. CONNECTOR MEETS THE REQUIREMENTS OF TIA-568-C.3.
2. A. LSZH-RATED CABLE ASSEMBLIES MEET IEC-60332, IEC-60754 AND IEC-61034 REQUIREMENTS.
B. PLENUM CABLE MEETS NFPA262 REQUIREMENTS.
3. CABLE MEETS THE MECHANICAL REQUIREMENTS OF ICEA-S-83-596.
4. ALL MATERIALS AND COMPONENTS USED MEET THE MATERIAL RESTRICTIONS OF RoHS (EUROPEAN DIRECTIVE 2011/65/EC ON THE RESTRICTION OF HAZARDOUS SUBSTANCES) AS PROPOSED BY THE RoHS TECHNICAL ADAPTATION COMMITTEE.
5. MAXIMUM STRENGTH OF THE PULLING EYE IS 20 lbs.



							TITLE 12 FIBER LC TO LC SMALL DIA. TRUNK CABLE WITH PULLING EYE					
							CUSTOMER DRAWING					
							ITEM REVISION NAME 12F178BM/01				<div>PANDUIT</div>	
							DATASET FILE NAME 12F178BM_DC/01A					
							UNLESS OTHERWISE SPECIFIED, DIMENSIONAL TOLERANCES ARE: IN [mm] .X ± .xxx ± .010 [0.3] .XX ± .03 [0.8] ANGLES ±					
							<div></div> THIRD ANGLE PROJECTION					
01	12-05-13	SAT	WMA	SFDO	RELEASED TO PRODUCTION	12F178BM-DC					DRAWING NUMBER: 12F178BM-DC	
REV	DATE	BY	CHK	APR	DESCRIPTION	ECN	DRAWN BY SAT	DATE 08-26-13	CHK WMA	SCALE NONE	SHT 1 OF 2	SIZE A

2

1

THIS COPY IS PROVIDED ON A RESTRICTED BASIS AND IS NOT TO BE USED IN ANY WAY DETRIMENTAL TO THE INTERESTS OF PANDUIT CORP.

1	2	3	4	5	6	7	8	9	10	11	12	13	14	15
F		T	Y		L	2	L	2						

FIBER TYPE

9 - OS1/OS2
X - OM3
Z - OM4

FLAME RATING

L - LSZH
P - OFNP

PERFORMANCE/POLARITY

S - STANDARD PERFORMANCE (SEE NOTE 8)
O - OPTIMIZED PERFORMANCE (SEE NOTE 8)

PULLING EYE

A - PULLING EYE
N - NO PULLING EYE

UNIT OF MEASURE

M - METERS
F - FEET

LENGTH

B

B



A

A

TITLE

12 FIBER LC TO LC SMALL DIA.
TRUNK CABLE WITH PULLING EYE

CUSTOMER DRAWING

ITEM REVISION NAME

12F178BM/01

DATASET FILE NAME

12F178BM_DC/01A

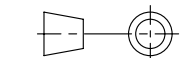
UNLESS OTHERWISE SPECIFIED,
DIMENSIONAL TOLERANCES ARE: IN [mm]

.X ±

.XXX ± .010 [0.3]

.XX ± .03 [0.8]

ANGLES ±



THIRD ANGLE
PROJECTION

MATERIAL:

DRAWING NUMBER:

12F178BM-DC

PANDUIT

01	12-05-13	SAT	WMA	SFDO	RELEASED TO PRODUCTION	12F178BM-DC
REV	DATE	BY	CHK	APR	DESCRIPTION	ECN

DRAWN BY	DATE	CHK	SCALE	SHT 2 OF 2	SIZE
SAT	08-26-13	WMA	NONE		A

2

1