

LEVITON



# Opt-X Ultra™

RACK MOUNT FIBER TERMINATION AND SPLICE ENCLOSURES

# Opt-X Ultra™

---

Revolutionary good looks

Maximized visibility

Enhanced accessibility

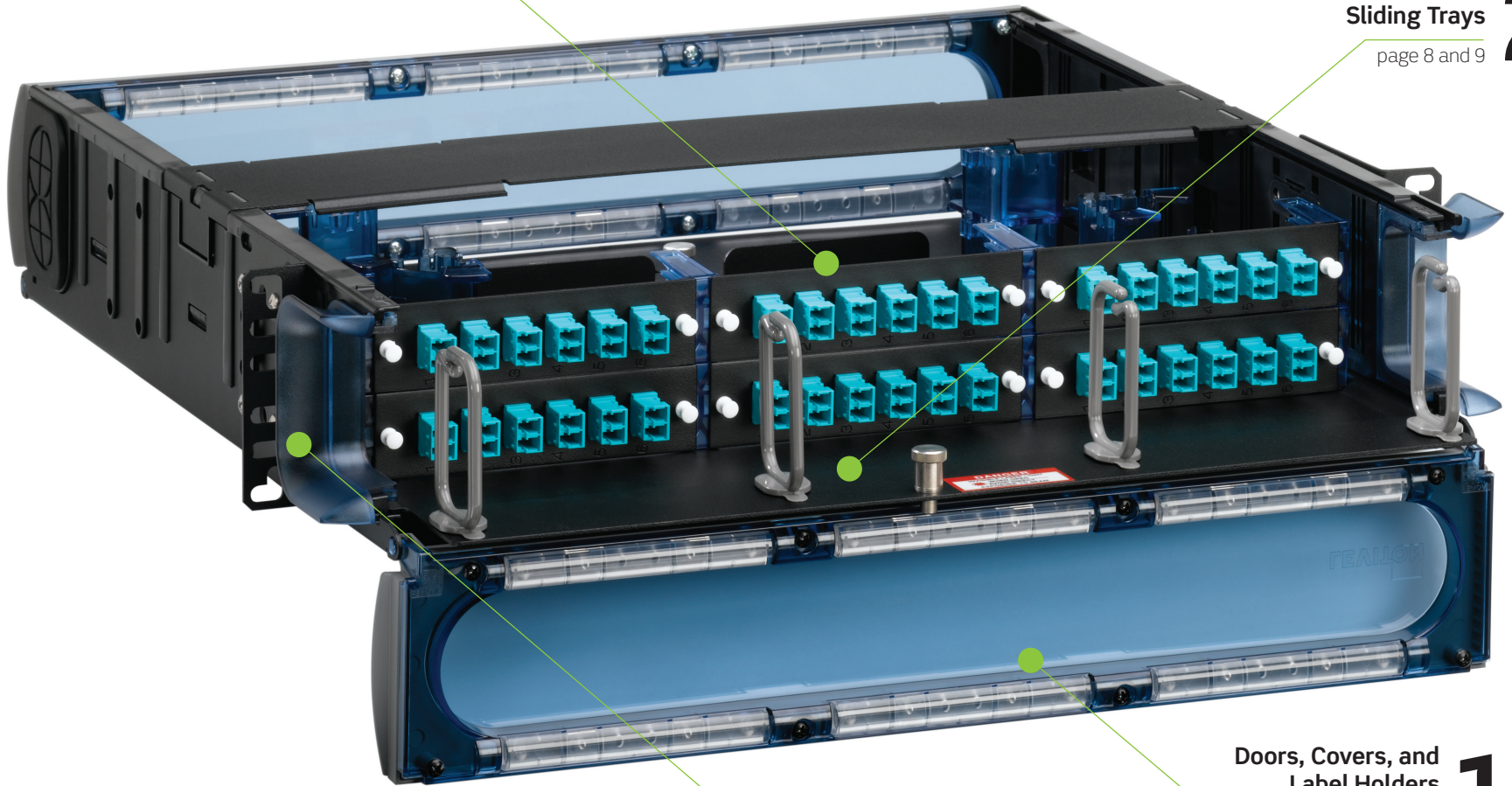
Advanced fiber management

Versatile configurations

---

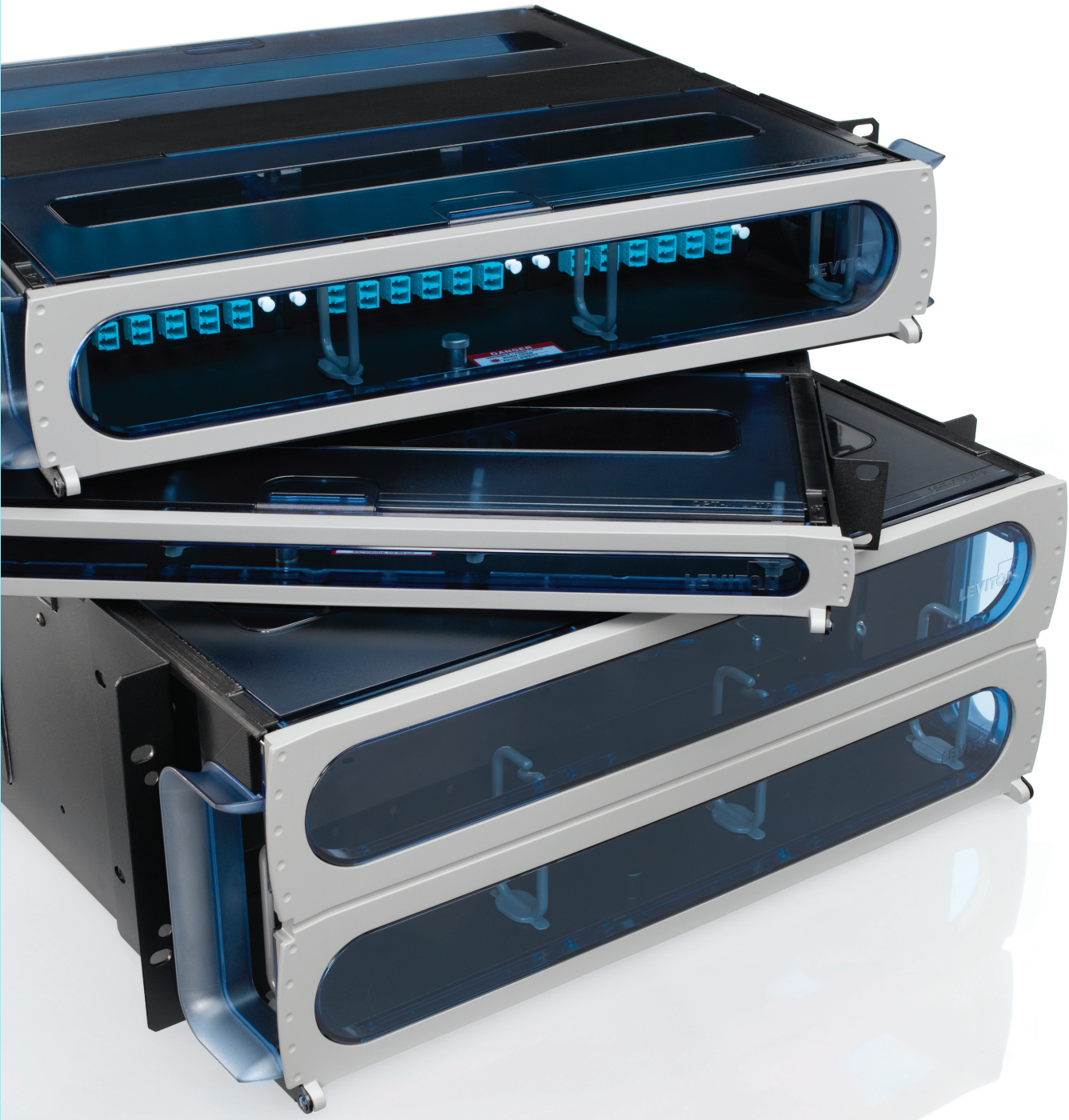
**4** Adapters, Modules,  
and Splice Trays  
page 12 and 13

Forward and Backward  
Sliding Trays **2**  
page 8 and 9



Cable Management and  
Bend Radius Options **3**  
page 10 and 11

Doors, Covers, and  
Label Holders **1**  
page 6 and 7



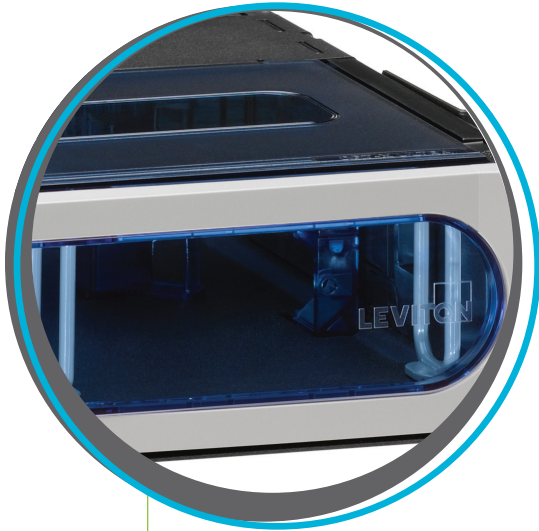
Opt-X Ultra™ - it's not just the cool kid on the block. Tinted, transparent polycarbonate covers and doors provide enhanced visibility. The sliding tray offers unmatched accessibility. And multiple bend radius and cable management options preserve fiber integrity.

Don't worry. We won't tell if you only want it for its looks.



# See what's inside at a glance

Take a look. Opt-X Ultra™ Enclosures offer unparalleled features to help you quickly identify contents and cable routing.

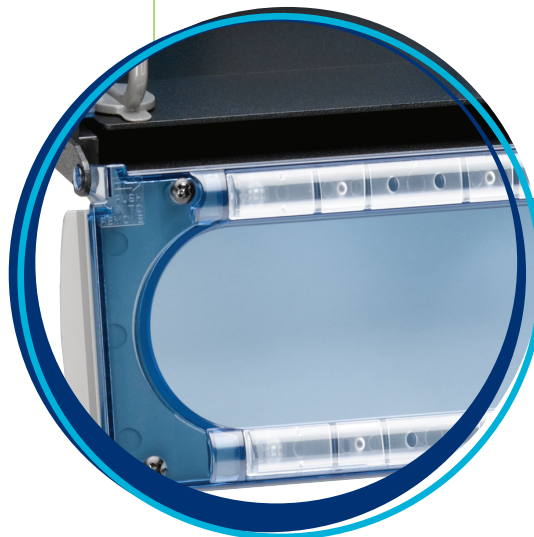


## Doors

Transparent, hinged, and fully removable front and rear doors simplify tray and adapter plate access. Locking option available.

## Label Holders

Figuring out where that fiber is going shouldn't be a challenge. Magnified label holders clearly identify every connection.



## Covers

Easily see and reach enclosure contents. Transparent polycarbonate chassis covers simply slide away as needed.



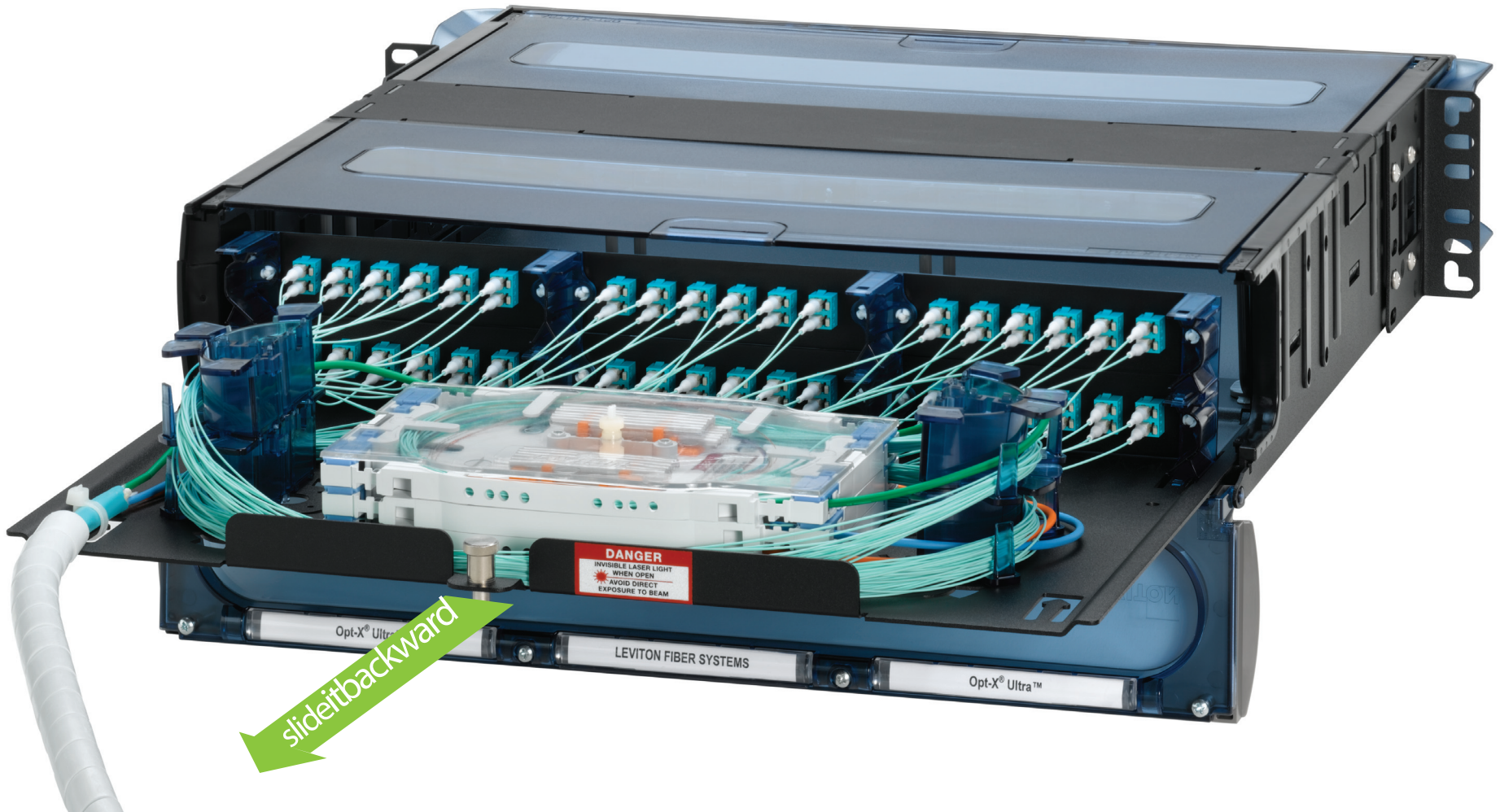
## Sliding Trays

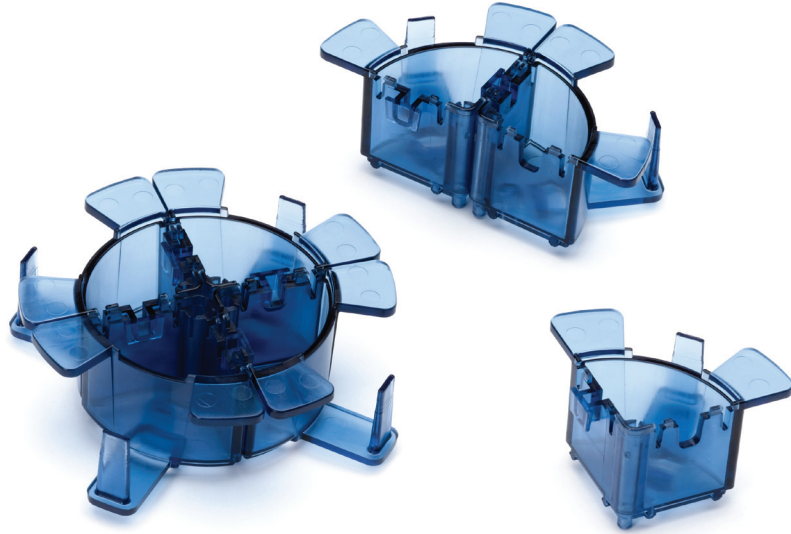
Slide it forward. Backward. Part of the way. Or all the way. Removable tray makes fiber installation and management a snap.



Ultra-accessible

Simplified installation & maintenance





## Fiber Management Rings

Secure fiber slack with customized configurations. With or without a splice tray. Stacked vertically or all on one layer. Whatever's best for you.

## Strain Relief Bracket

Prevent kinking and pinching at the cable entry point. Secure horizontally or offset at 45° to support incoming fiber.



Ultra-manageable

# Stress-free fiber protection

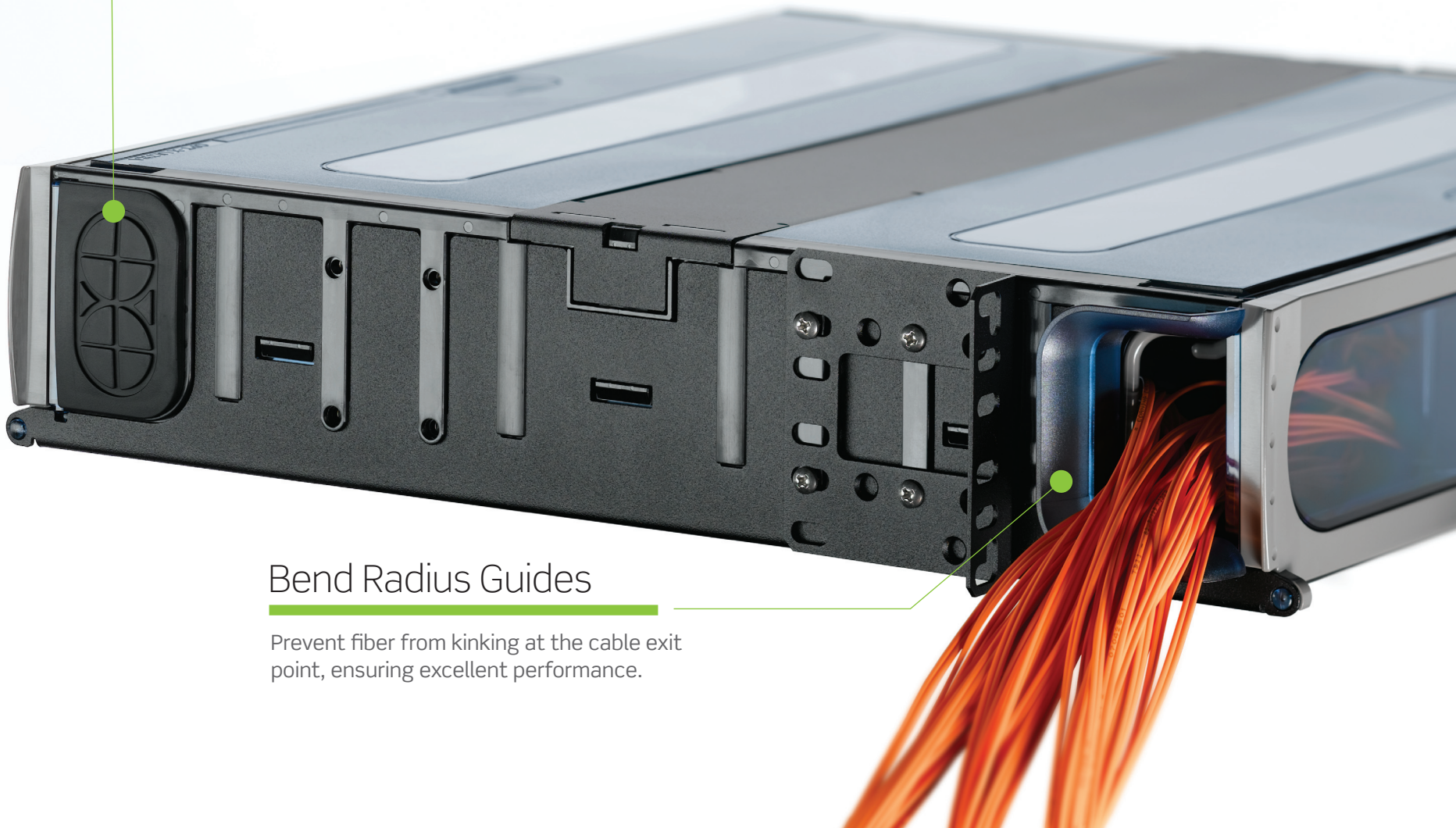
De-stress. Opt-X Ultra™ Enclosures include numerous features designed to preserve fiber integrity.

## Rubber Grommet

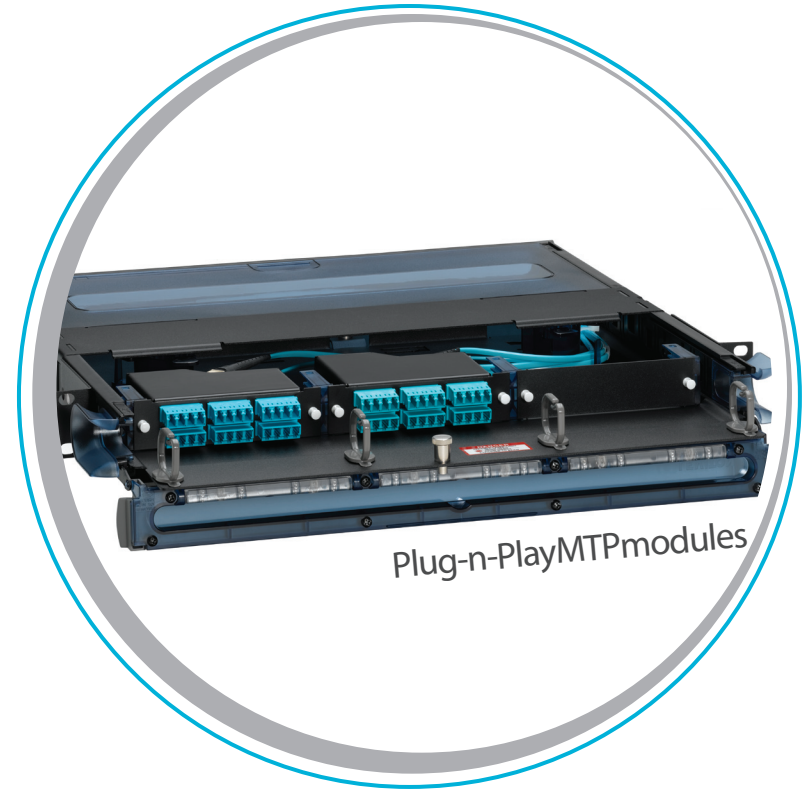
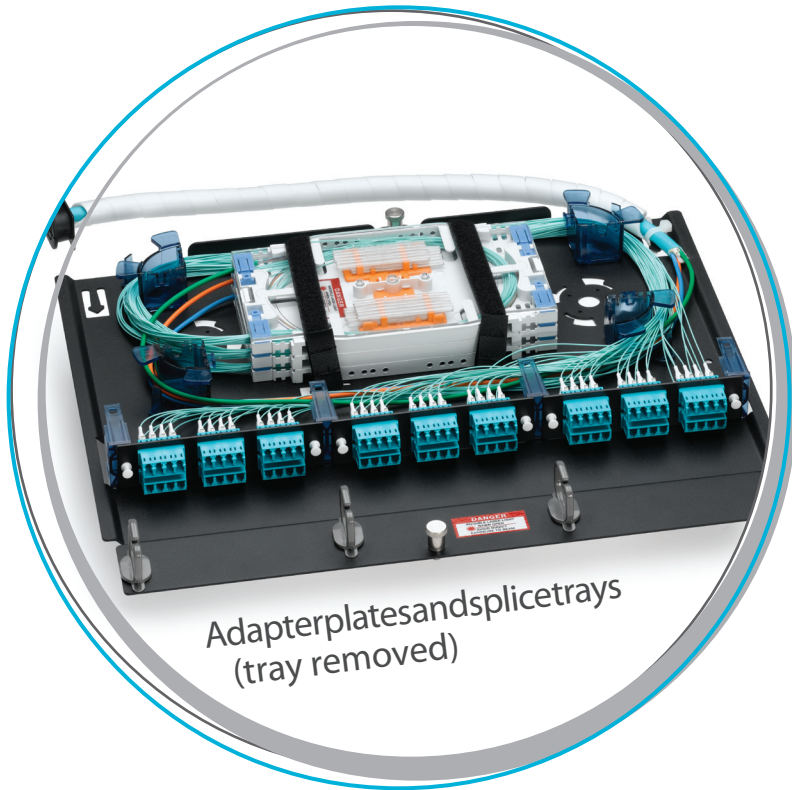
Pre-scored and – sized. Now it's easier than ever to create the perfect entry for jacketed fiber.

## Bend Radius Guides

Prevent fiber from kinking at the cable exit point, ensuring excellent performance.





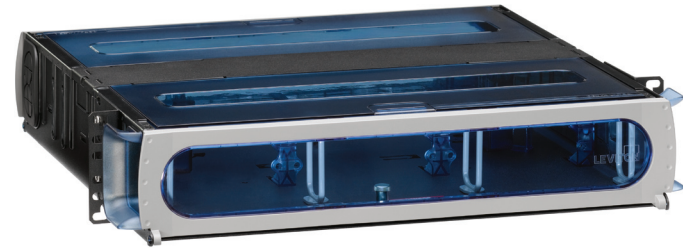


## Versatile Configurations

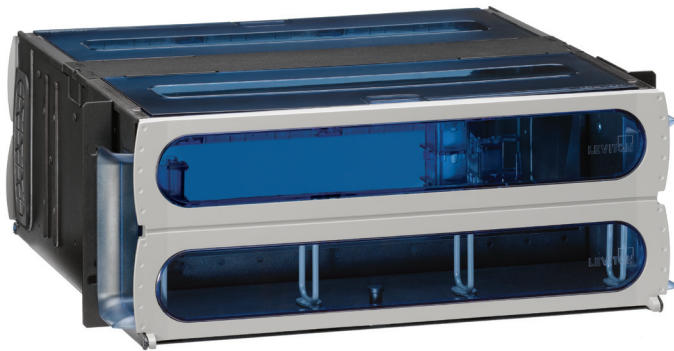
Whatever your fiber configuration, we can accommodate it – Plug-n-Play Modules, field terminations (including fan out kits), Pre-terminated Fiber Trunks or splicing.



Opt-X Ultra™ 1RU (5R1UH-S03)



Opt-X Ultra 2RU (5R2UH-S06)



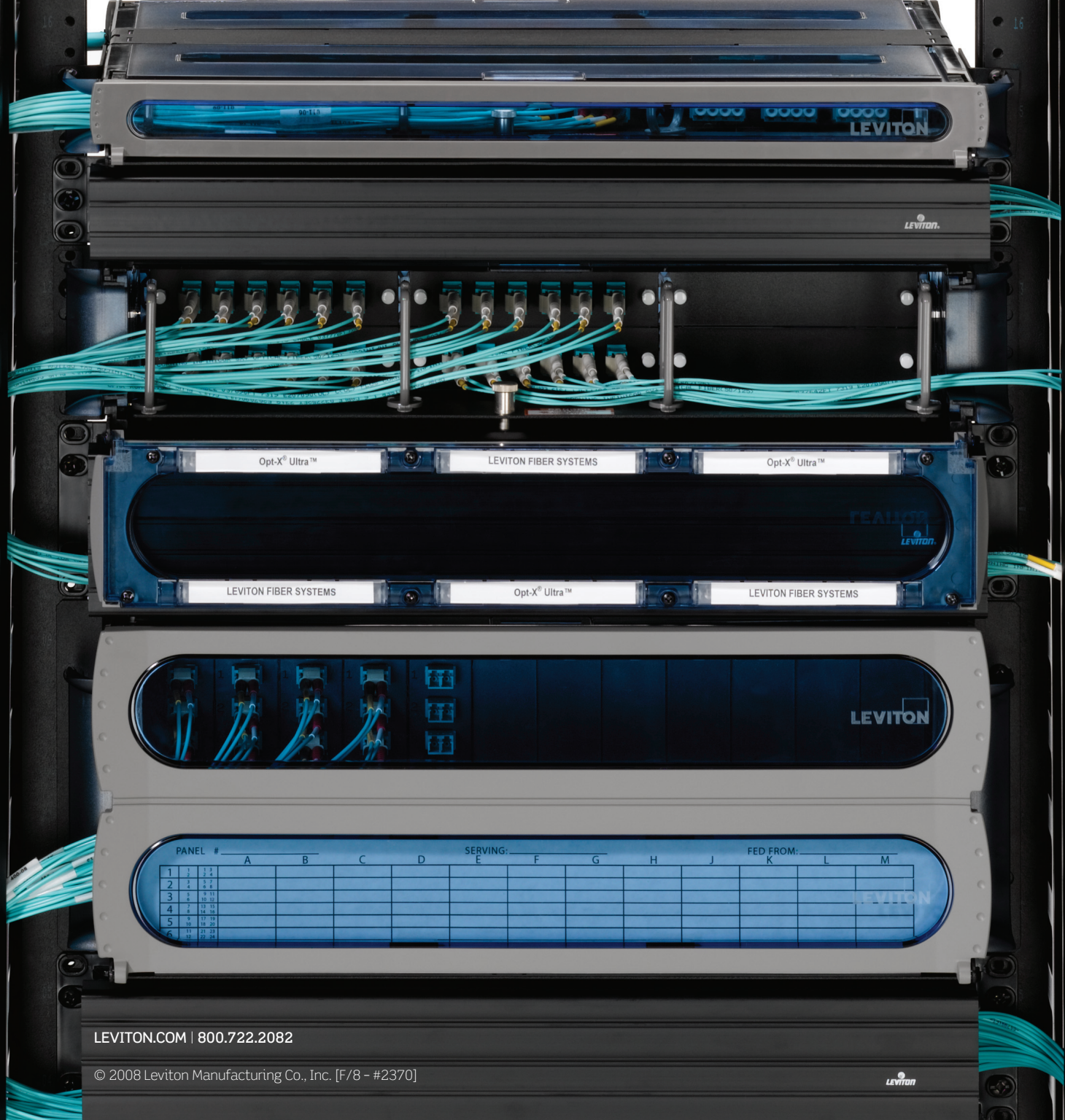
Opt-X Ultra 4RU (5R4UH-S12)



Customize Opt-X Ultra enclosures with adapter plates, MTP modules, splice trays, and more at [leviton.com/configurator](http://leviton.com/configurator).

PART NUMBERS	
Description	Part No.
1RU Enclosure, empty, with sliding tray	5R1UH-S03
2RU Enclosure, empty, with sliding tray	5R2UH-S06
4RU Enclosure, empty, with sliding tray	5R4UH-S12
Cable Strain Relief Mounting Kit	5RCMP-KIT
Fiber ¼ Cable Management Ring Kit	5R100-14R
Grounding Kit	DPGRD-KIT
1RU Enclosure 23" Rack Mounting Bracket	5R1RU-023
1RU Replacement Door	5D000-1UN
2RU Replacement Door	5D000-2UN
4RU Replacement Door	5D000-4UN
1RU Replacement Door w/lock	5D000-1UL
2RU Replacement Door w/lock	5D000-2UL
4RU Replacement Door w/lock	5D000-4UL
Replacement Covers	5C000-RPL

\*For more information about Leviton's full line of fiber enclosures, see the Fiber Enclosures Selection Guide.



LEVITON.COM | 800.722.2082

© 2008 Leviton Manufacturing Co., Inc. [F/8 - #2370]



PANEL # \_\_\_\_\_ SERVING: \_\_\_\_\_ FED FROM: \_\_\_\_\_

	A	B	C	D	E	F	G	H	J	K	L	M
1	1	2	3	4	5	6	7	8	9	10	11	12
2	1	2	3	4	5	6	7	8	9	10	11	12
3	1	2	3	4	5	6	7	8	9	10	11	12
4	1	2	3	4	5	6	7	8	9	10	11	12
5	1	2	3	4	5	6	7	8	9	10	11	12
6	1	2	3	4	5	6	7	8	9	10	11	12