

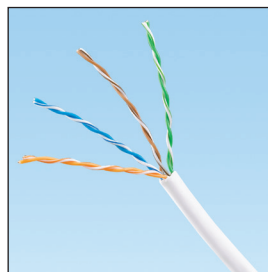
# TX5e™ Category 5e U/UTP Copper Cable

# PANDUIT®

SPECIFICATION SHEET

## specifications

Category 5e cable shall meet ANSI/TIA-568-C.2 and IEC 61156-5 Category 5e component standards. The conductors shall be 24 AWG construction with FEP/polyolefin (CMP) or polyolefin (CMR) insulation. The copper conductors shall be twisted in pairs and covered by a low smoke, flame-retardant (CMP) PVC or a flame-retardant (CMR) PVC jacket.



## technical information

<b>Electrical performance:</b>	Certified channel performance in a 4-connector configuration up to 100 meters and meets ANSI/TIA-568-C.2 Category 5e and ISO 11801 Class D standards at swept frequencies up to 100 MHz  Certified component performance up to 100 meters and meets the component requirements of ANSI/TIA-568-C.2 and IEC 61156-5 Category 5e component standards at swept frequencies up to 100 MHz
<b>Conductors/insulators:</b>	Plenum: 24 AWG bare copper wire covered by FEP/polyolefin insulation Riser: 24 AWG bare copper wire covered by polyolefin insulation
<b>Flame rating:</b>	Plenum: NFPA 262 and CSA FT-6 Riser: UL1666 and CSA FT-4
<b>PoE compliance:</b>	Meets IEEE 802.3af and IEEE 802.3at for PoE applications
<b>Installation tension:</b>	25 lbf (110 N) maximum
<b>Temperature rating:</b>	32°F to 122°F (0°C to 50°C) during installation -4°F to 167°F (-20°C to 75°C) during operation
<b>Cable jacket:</b>	Plenum – low smoke, flame-retardant PVC Riser – flame-retardant PVC
<b>Cable diameter:</b>	0.189 in (4.8mm) nominal
<b>Cable weight:</b>	18.5 lbs./1000 ft. (8.4 kg/305m)
<b>Packaging:</b>	1000 ft. (305m) in an easy payout carton Package tested to ISTA Procedure 1A

## key features and benefits

<b>Third party tested</b>	Cable has been tested as part of the Category 5e UTP Copper Cabling System by an independent laboratory and complies with the electrical channel requirements of the following standards: ANSI/TIA-568-C.2 Category 5e and ISO 11801 Class D
<b>Descending length cable markings</b>	Easy identification of remaining cable reduces installation time and cable scrap
<b>Tested beyond the standards</b>	Cable has been characterized to 350 MHz, 250 MHz above the standard
<b>Easy payout carton</b>	Ensures proper performance and provides quick installation

## applications

The Panduit Category 5e Cabling System provides Gigabit Ethernet performance with usable bandwidth beyond 100 MHz. With certified performance to the ANSI/TIA-568-C.2 Category 5e and ISO 11801 Class D standards, this system will support the following applications:

- Ethernet 10BASE-T, 100BASE-T (Fast Ethernet), 1000BASE-T (Gigabit Ethernet)
- 155 Mb/s ATM, 622 Mb/s ATM
- Token ring 4/16

[www.panduit.com](http://www.panduit.com)

### Category 5e U/UTP Copper Cable

**Plenum:** PUP5C04\*-F

**Riser:** PUR5C04\*-F

### Cable Prep Tools

**Wire snipping tool:** CWST

**Wire stripping tool:** CJUST

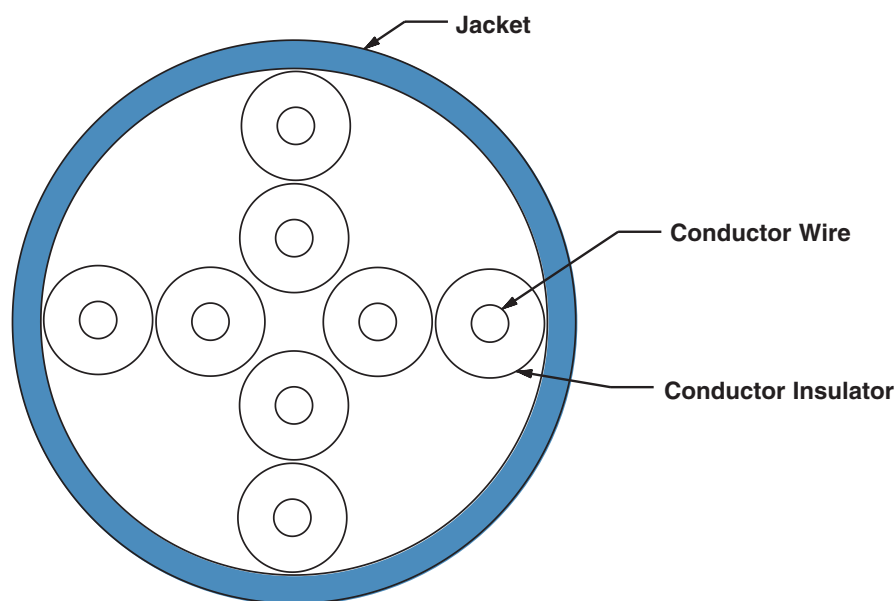
\*For standard cable colors, add suffix BU (Blue) or WH (White). For additional cable colors, contact customer service.

# TX5e™ Category 5e U/UTP Copper Cable

## additional specifications

Mechanical Test	
<i>Ultimate Breaking Strength</i>	>90 lbf (400 N)
<i>Minimum Bend Radius</i>	4 x cable diameter
Electrical Test	
<i>Nominal Velocity of Propagation (NVP)</i>	Riser – 67%, Plenum – 68%
<i>Operating Voltage, Maximum</i>	80V

## cable construction



### WORLDWIDE SUBSIDIARIES AND SALES OFFICES

PANDUIT CANADA  
Markham, Ontario  
cs-cdn@panduit.com  
Phone: 800.777.3300

PANDUIT EUROPE LTD.  
London, UK  
cs-emea@panduit.com  
Phone: 44.20.8601.7200

PANDUIT SINGAPORE PTE. LTD.  
Republic of Singapore  
cs-ap@panduit.com  
Phone: 65.6305.7575

PANDUIT JAPAN  
Tokyo, Japan  
cs-japan@panduit.com  
Phone: 81.3.6863.6000

PANDUIT LATIN AMERICA  
Guadalajara, Mexico  
cs-la@panduit.com  
Phone: 52.33.3777.6000

PANDUIT AUSTRALIA PTY. LTD.  
Victoria, Australia  
cs-aus@panduit.com  
Phone: 61.3.9794.9020

For a copy of Panduit product warranties, log on to [www.panduit.com/warranty](http://www.panduit.com/warranty)

For more information

Visit us at [www.panduit.com](http://www.panduit.com)

Contact Customer Service by email: [cs@panduit.com](mailto:cs@panduit.com)  
or by phone: 800.777.3300

**PANDUIT®**

©2015 Panduit Corp.  
ALL RIGHTS RESERVED.  
**COSP359--WW-ENG**  
Replaces WW-COSP202  
2/2016