

USER GUIDE START HERE



1 DOWNLOAD THE STARFISH APP



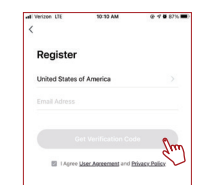
System Requirements

- Minimum iOS 9.3 or Wi-Fi 4.4
- Dedicated 2.4GHz Wi-Fi Network

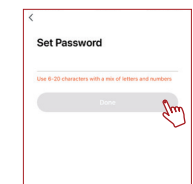
TECHNICAL SUPPORT
Support@satcostarfish.com

2 Launch the App and tap "Register" for new accounts or "Login" for existing accounts.

3 Enter E-Mail address, then tap "Get verification code".



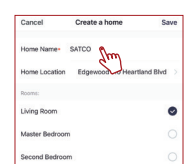
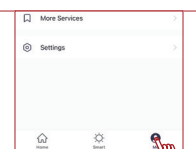
4 Create a Password then tap "Done"



Create/Share a Home

Create a Home

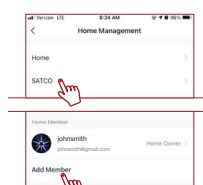
5 Tap the "Me" button on the bottom of the screen, and then tap "Home Management". Tap the "Create a home" button to setup your home.



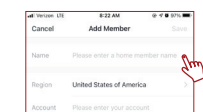
Share a Home

6 From the Home Management screen, select the Home that you would like to share.

Tap "Add Member" and select the way that you would like to send the invitation

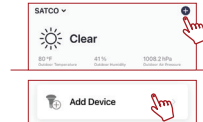


7 Enter the user information and select if the new member will be an "Administrator" or a "Common Member" in the Home. Tap "Save" to send the invitation

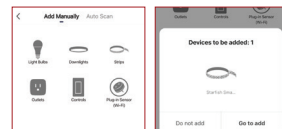


Add Devices

8 Tap the (+) button on the top right corner to access the action menu, then select "Add Device".



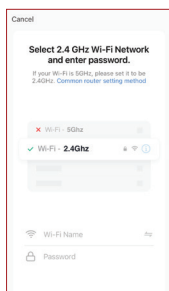
9 First make sure your phone is connected to a 2.4GHz Wi-Fi Network, then select the type of device you would like to connect. If you have a BLE enabled device, make sure that you have Bluetooth turned ON for connection.



If your device is BLE enabled, you may see a pop-up indicating that there are unpaired devices in the area. Click "Add" and select the devices you would like to connect.

10 Enter your 2.4GHz Wi-Fi Network name and password, and click "Next".

Note: If the devices are not flashing, turn devices On and Off 5 times to enter pairing mode.



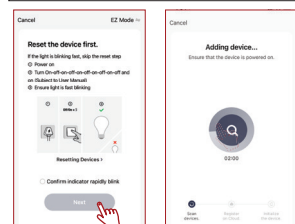
11 Ensure that your Starfish device is installed and powered ON.

Put the Device into pairing mode by turning OFF and then ON 5 times. Please wait about 3 seconds between switching OFF and ON each time.

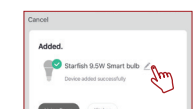
For pairing strings, strips, switches, plugs or controllers, hold the power button for approximately 10 seconds until indicator starts blinking.

12 If correctly put into pairing mode, the device will be blinking quickly. Confirm that the device is blinking quickly and click "next". The pairing status screen will appear.

Note: If unsuccessful, please refer to the FAQs on Satco.com/Starfish



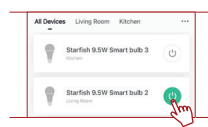
13 To rename the device, tap the "Pen" icon, enter the new name and tap "Completed". The device is now ready to be controlled with the starfish App.



Features

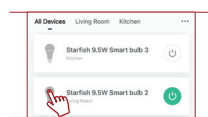
Individual Bulb On/Off

14 Tap the Power Button to turn the device On or Off



Individual Bulb Setting

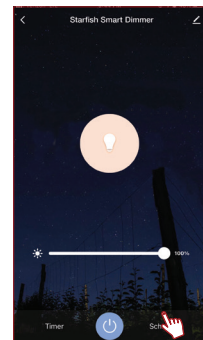
15 Tap the device icon for additional device features



Dimming

16 Slide the dimming bar left or right to set the brightness level

Note: Screen shown for "dimming only" product.



Please Note: Starfish products cannot be used with an in-wall dimmer. These products can only be used with a standard ON/OFF switch. For proper operation, all dimming must be done through the Starfish devices.

Tunable White

17 Tap on any part of the wheel or one of the preset colors to adjust color temperatures from Warm to Cool

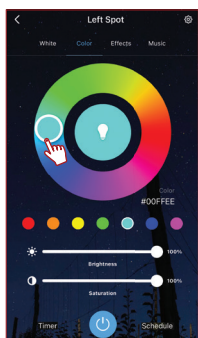
Slide the dimming bar left or right to set the brightness level



Color Changing

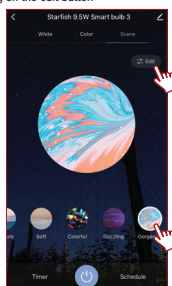
18 Tap on any part of the color wheel or one of the preset colors to select your desired color

Use the slide bars to adjust the brightness and color saturation

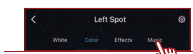


Effects

19 Tap on a preset effect, or create a custom effect by tapping on the edit button



20 Some Starfish devices also include a "Music" function. Tap the music tab to have the color of light change based on the sounds in the room.



Please note that this functionality utilizes the microphone of the mobile device to determine sounds.

Schedule

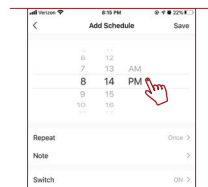
21 Tap on the "Schedule" button



22 Select a time for the event to occur

Tap "Repeat" to repeat on certain days of the week, otherwise the event will only occur once. Select the days that you would like the schedule to repeat.

Select if you would like the device to turn on or off.



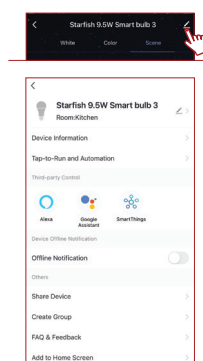
Timer

23 At device control panel, tap the Timer Button to create a countdown timer. Select time and confirm to start the timer.

Advanced Settings

24 Additional settings are available in the device settings menu.

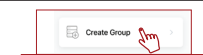
Tap the pen icon in the upper right corner to access the menu screen



Create Groups

25 From the "Home" screen, select the (+) button from the top right corner, and select "Create Group".

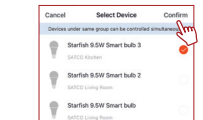
NOTE: To create groups you will need at least 2 devices.



26 Select the type of devices that you would like to group



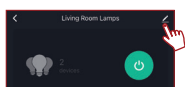
27 Select the devices you want to group and then tap "Confirm"



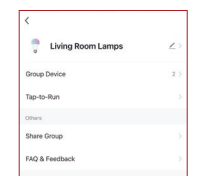
28 Enter the group name and click "Save"

Edit Groups

29 Tap the pen icon in the upper right corner

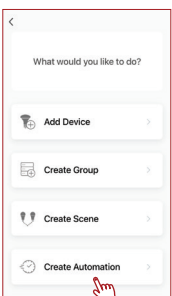


30 Rename the group or remove a device from the group. Once complete, tap "Confirm" in the upper right corner.



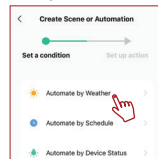
Automation and Scenes

31 From the Home Screen, press the (+) button on the top right, then select "Create Scene" or "Create Automation".

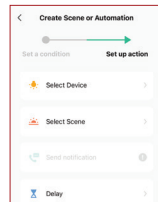


32 When creating an Automation, you will need to assign a "Condition"

Select "Automate by Weather", "Automate by Schedule" or "Automate by Device Status" to have your devices run automatically based on the condition.

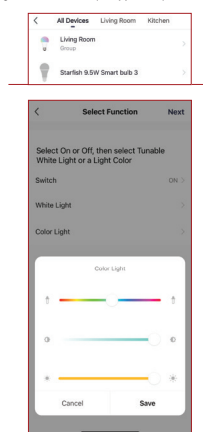


33 For scenes or automations, you will then need to select your "Action". Select a previously created scene, a device or a group to be controlled.

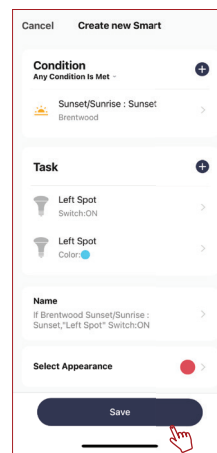


34 Select the devices or groups that you would like to be controlled, and then select if you would like those devices to Turn On or Off, and the color.

For devices and groups, you can designate On or Off, Brightness and Color (as applicable).



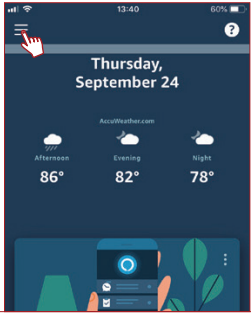
35 Tap "Next" and then review the Automation or Scene. Click "Save" to activate your Automation or Scene.



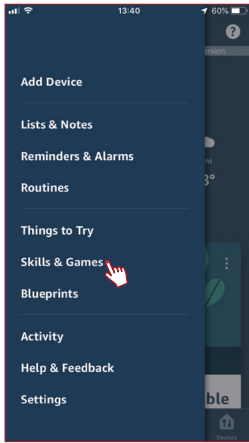
CONNECTING TO ALEXA

Note: Make sure that your Alexa App is connected to your Amazon device and is working properly

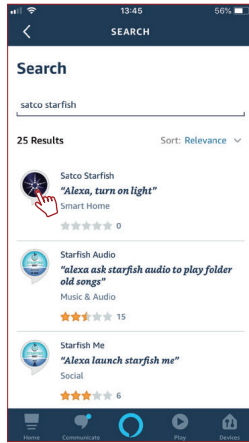
1 Log in to your Alexa App and tap the top left corner to access the menu.



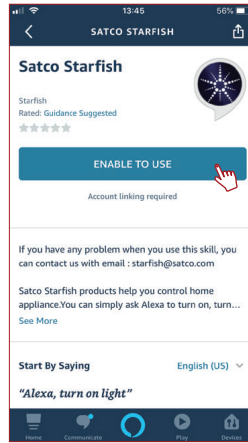
2 Tap "Skills & Games"



3 Type "Satco Starfish" and tap on the icon in the search results.

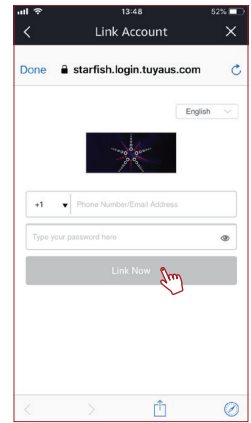


4 Tap "Enable to Use" to begin linking your account.



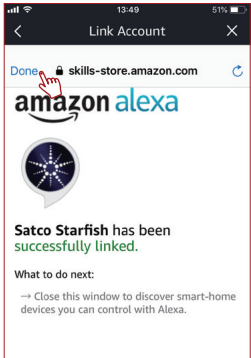
5 Enter your Satco Starfish username and password to link your accounts, then tap "Link Now".

Note: You must use the same username and password from the Starfish App.

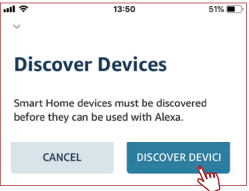


6 Tap "Authorize" on the next page to link your Starfish account to Alexa

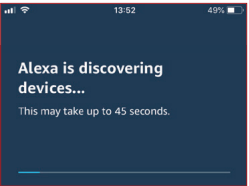
7 Once your Starfish account is successfully linked to Alexa, tap "Done" on the top left corner



8 Tap "Discover Devices" to connect your Smart devices



9 Wait for Alexa to detect the devices from the Starfish App

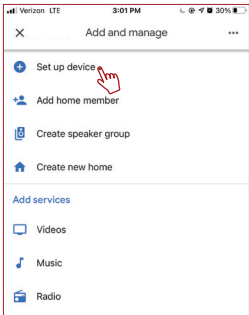


Your devices will now be paired and can be controlled through the Alexa App or through your Alexa device

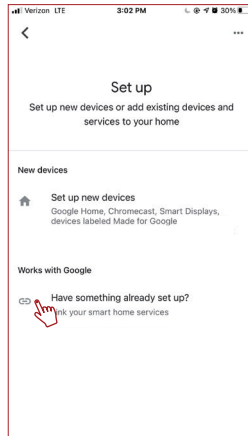
CONNECTING TO GOOGLE HOME

Note: Make sure your Google Home App is connected to your Google device and is working properly

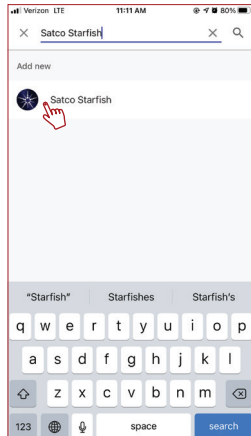
1 Open the Google Home App, then tap "Set up device".



2 Tap "Have something already set up?".

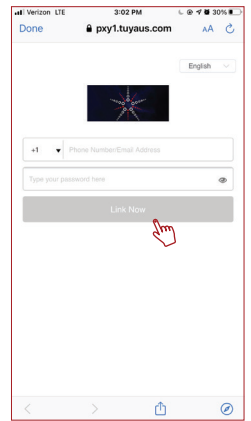


3 Type "Satco Starfish" and tap on the icon in the search results.



4 Enter your Satco Starfish username and password to link your accounts, then tap "Link Now".

Note: You must use the same username and password from the Starfish App.



VOICE CONTROL

Now that you have linked your Starfish devices to Amazon or Google, you will be able to control them with voice commands from your Alexa or Google Assistant devices.

Below are some common voice commands that can be used after you say "Alexa" or "OK, Google":

- Turn on "Device Name"
- Turn off "Device Name"
- "Device Name" to 50%
- Turn "Group Name" off
- Turn "Device Name" to soft white (Tunable White Devices Only)
- Turn "Device Name" to Blue [RGB Devices Only]
- Make "Device name" warmer
- Make "Device name" cooler

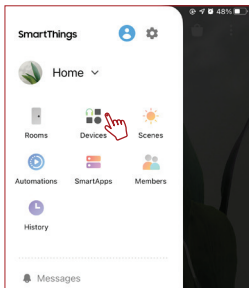
Note: Refer to your Amazon or Google app to confirm the "Device Name" for each of your devices

CONNECTING TO SMART THINGS

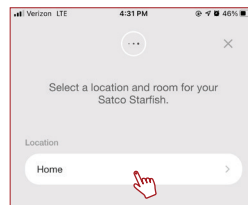
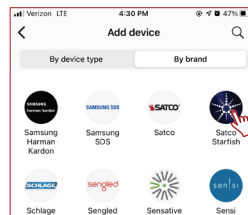
Note: Make sure your SmartThings App is connected to your hub and is working properly

1 Open the SmartThings App, then tap the top left corner to access the menu

Tap "Devices" and then "Add new device"

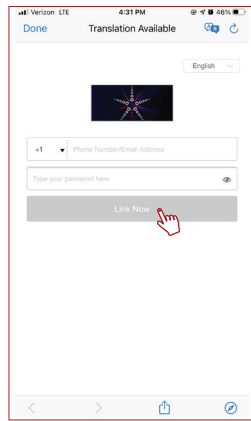


2 Select "Satco Starfish" from the "By brand" list, then select the location where you would like to add the device



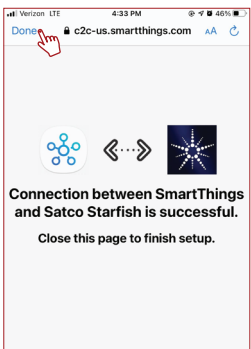
3 Enter your Satco Starfish username and password to link your accounts, then tap "Link Now"

Note: You must use the same username and password from the Starfish App



4 Tap "Authorize" on the next page to link your Starfish account to SmartThings

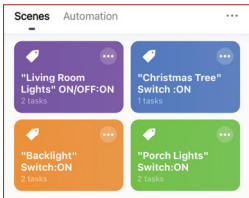
Once your Starfish account is successfully linked to SmartThings, tap "Done" on the top left corner



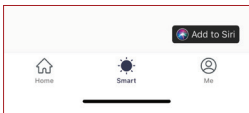
Connection between SmartThings and Satco Starfish is successful. Close this page to finish setup.

CONNECTING TO SIRI SHORTCUTS

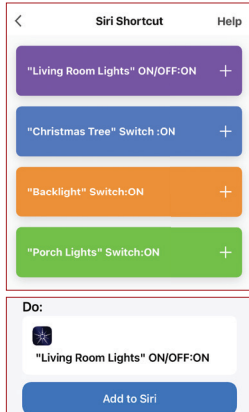
1 From the "Home" Screen, tap the "Smart" button on the bottom banner to see your scenes and automations



2 In the "Smart" tab, make sure you have already created a custom scene. Any of your custom scenes can then be added to Siri Shortcuts



3 Tap the "Add to Siri" button on the bottom right corner of the screen, and then select the scene that you would like to add to Siri.



4 Review the Siri shortcut information and tap "Save Shortcut" can then be added to Siri Shortcuts

Now you can activate this scene through Siri

ENJOY THESE OTHER GREAT STARFISH WIFI SMART LED PRODUCTS



For complete product information, videos and FAQ's, please visit www.Satco.com/Starfish

Copyright Satco Product's Inc. 2020 Not responsible for typographical errors. Specifications / App features subject to change. See user agreement for full details. App images are representations of the actual App. Amazon, Alexa and all related logos and trademarks of Amazon.com, Inc. and its affiliates. Siri is a registered trademark of Apple Inc. Google and Google Play are trademarks of Google LLC.

Your devices will now be paired and can be controlled through the Google Home App or through your Google device