

CATALOG NO.	CONDUCTOR	FIG. NO.	C ±.04	D ±.04	REF. H	K ±.04	L REF.	N ±.02	T ±.04	RECOMMENDED TIGHTENING TORQUE IN. LBS.	HARDWARE	STUD HOLE SIZE	QUANTITY/PACKAGE	STRIP LENGTH
KPA8CUP	#14 SOL 1.63 (.064) DIA. TO #6 STR 4.67 (.184) DIA. CU	2A	.38 [9.4]	.56 [14.2]	.81 [21.0]	.20 [5.1]	1.04 [26.4]	.22 [5.6]	.07 [1.8]	4 NM (35 IN. LBS.)	#12-24 SLOT	#10	100	15/32
KPA4CUP	#14 SOL 1.63 (.064) DIA. TO #4 STR 5.89 (.232) DIA. CU	2	.50 [12.7]	.71 [18.0]	1.0 [25.0]	.28 [7.1]	1.28 [32.5]	.33 [8.3]	.07 [1.8]	5.1 NM (45 IN. LBS.)	5/16 DIA. SLOT ROBERTSON	1/4	100	9/16
KPA25UP	#6 STR 4.67 (.184) DIA. TO #1/0 STR 9.44 (.372) DIA. CU		.62 [15.7]	.81 [20.6]	1.37 [35.0]	.33 [8.4]	1.56 [39.6]	.45 [11.4]	.12 [3.2]	5.6 NM (50 IN. LBS.)	3/8 DIA. SLOT ROBERTSON	5/16	100	3/4
KPA28UP	#6 STR 4.67 (.184) DIA. TO #4/0 STR 13.4 (.528) DIA. CU	1	1.0 [25.4]	1.10 [27.9]	1.55 [39.0]	.41 [10.4]	2.22 [56.4]	.57 [14.5]	.12 [3.2]	28 NM (250 IN. LBS.)	9/16 DIA. HEX SOCKET	3/8	25	1-1/8
KPA34UP	#2/0 STR 10.6 (.419) DIA. TO #500 Kcmil 20.7 (.813) DIA. CU	3	1.50 [38.1]	1.67 [42.4]	2.64 [67.0]	.53 [13.5]	3.37 [85.6]	.88 [22.4]	.18 [4.6]	42.4 NM (375 IN. LBS.)	5/8 DIA. HEX HEAD	1/2	18	1-11/16
KPA4CTPG2	#14 SOL 1.63 (.064) DIA. TO #4 STR 5.89 (.232) DIA. CU	2	.50 [12.7]	.71 [18.0]	1.0 [25.0]	.28 [7.1]	1.28 [32.5]	.33 [8.3]	.07 [1.8]	5.1 MM (45 IN. LBS.)	5/16 DIA. SLOT ROBERTSON	1/4	100	9/16
KPA4CTPG3	#14 SOL 1.63 (.064) DIA. TO #4 STR 5.89 (.232) DIA. CU	2	.50 [12.7]	.71 [18.0]	1.0 [25.0]	.34 [8.6]	1.28 [32.5]	.33 [8.3]	.07 [1.8]	5.1 MM (45 IN. LBS.)	5/16 DIA. SLOT ROBERTSON	1/4	100	9/16
KPA8CUPG10	#14 SOL 1.63 (.064) DIA. TO #6 STR 4.67 (.184) DIA. CU	2A	.38 [9.4]	.56 [14.2]	.81 [21.0]	.20 [5.1]	1.04 [26.4]	.22 [5.6]	.07 [1.8]	4 MM 935 IN. LBS.)	#12-24 SLOT	#10	100	15/32

REV	DATE	DESCRIPTION	ECO	BY	C'K
B	2019-12-10 23:00:00 EST	ADDED PARTS TO TABLE	52426	JL	TR

D

D

C

C

B

B

A

A

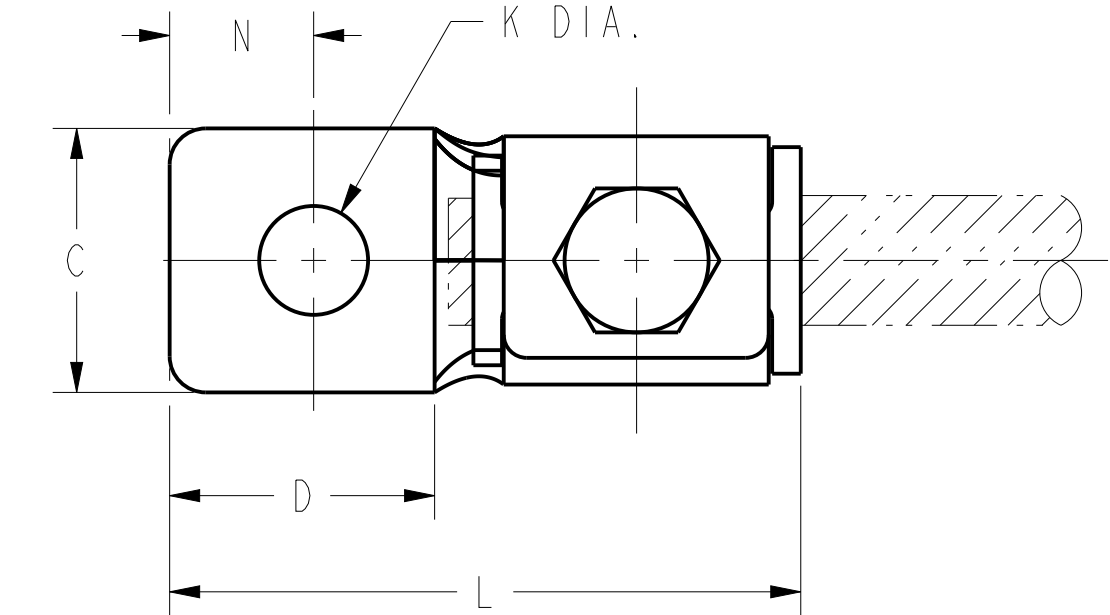
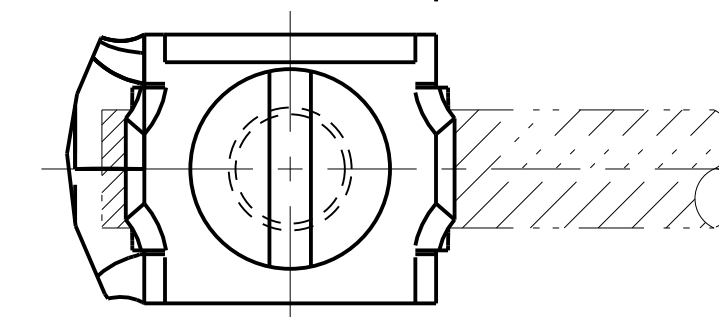
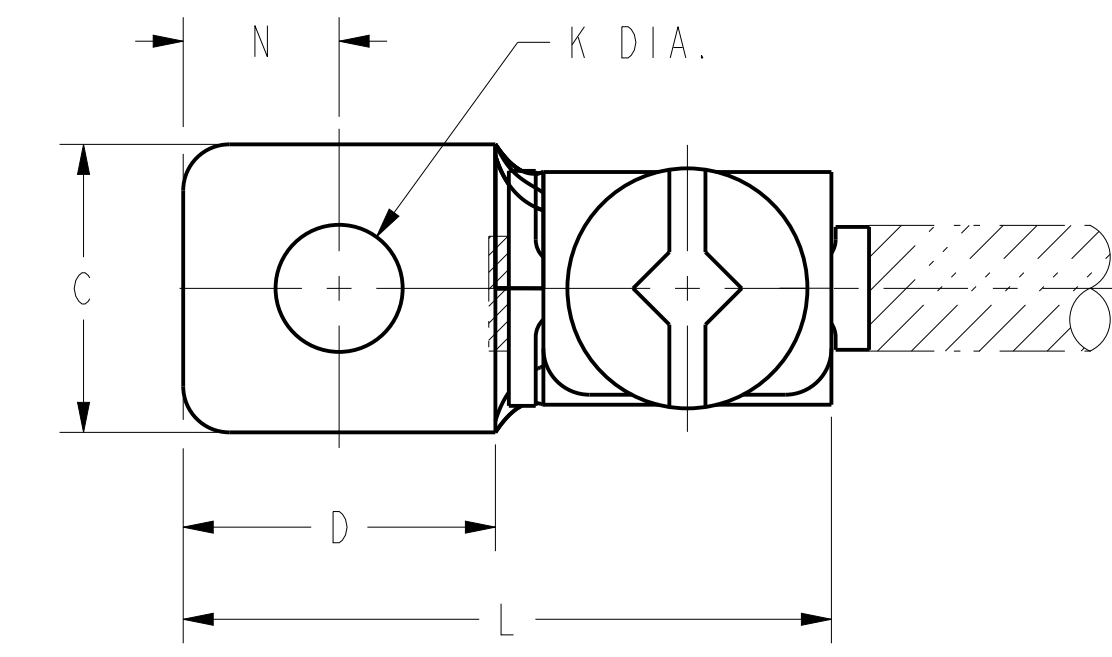
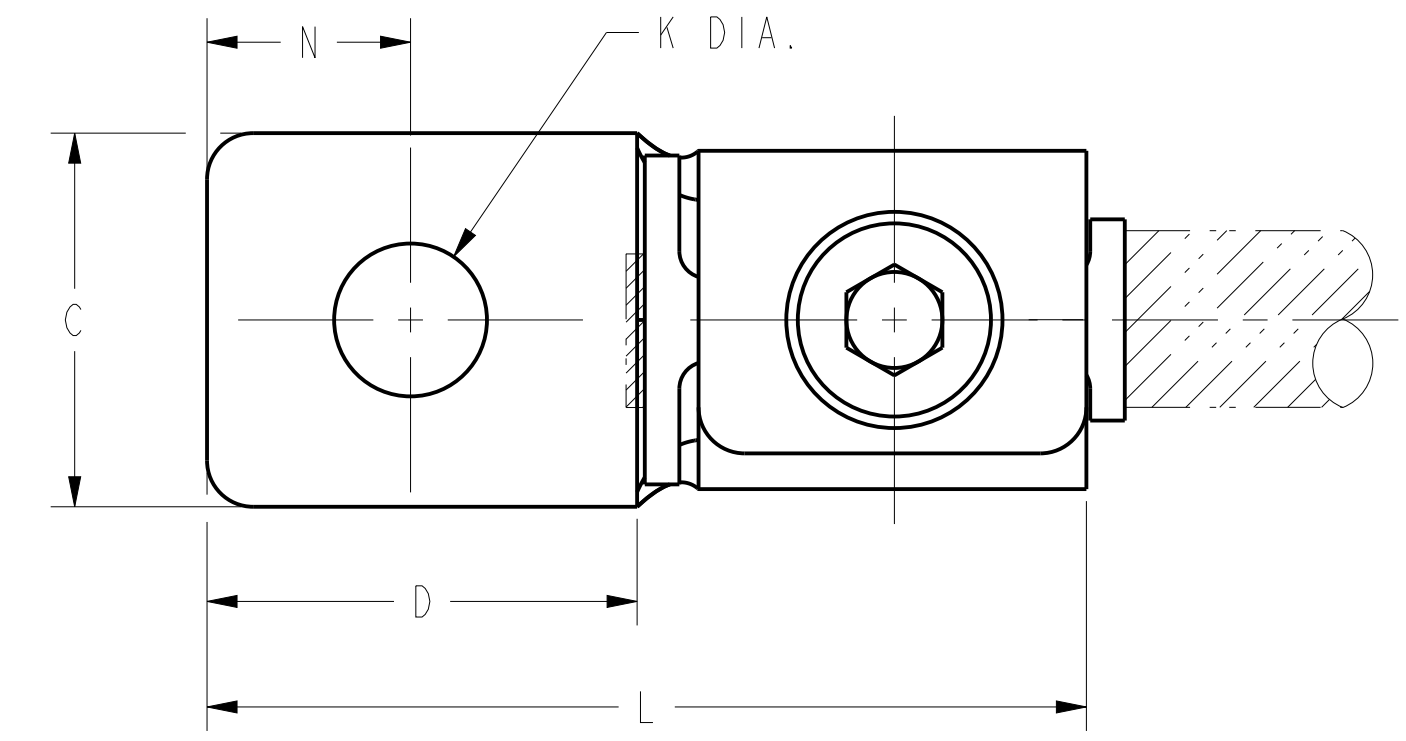
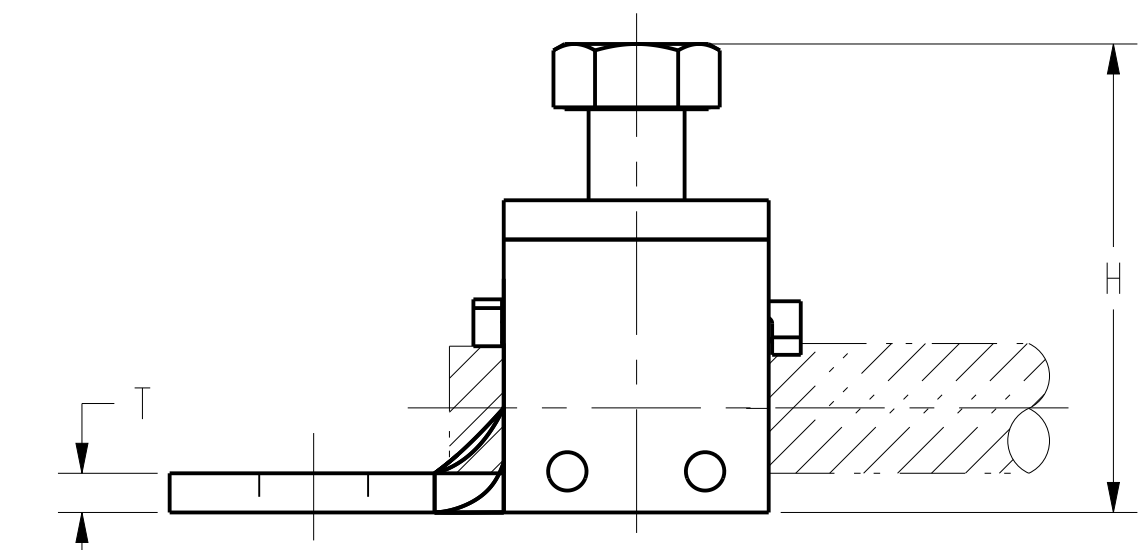
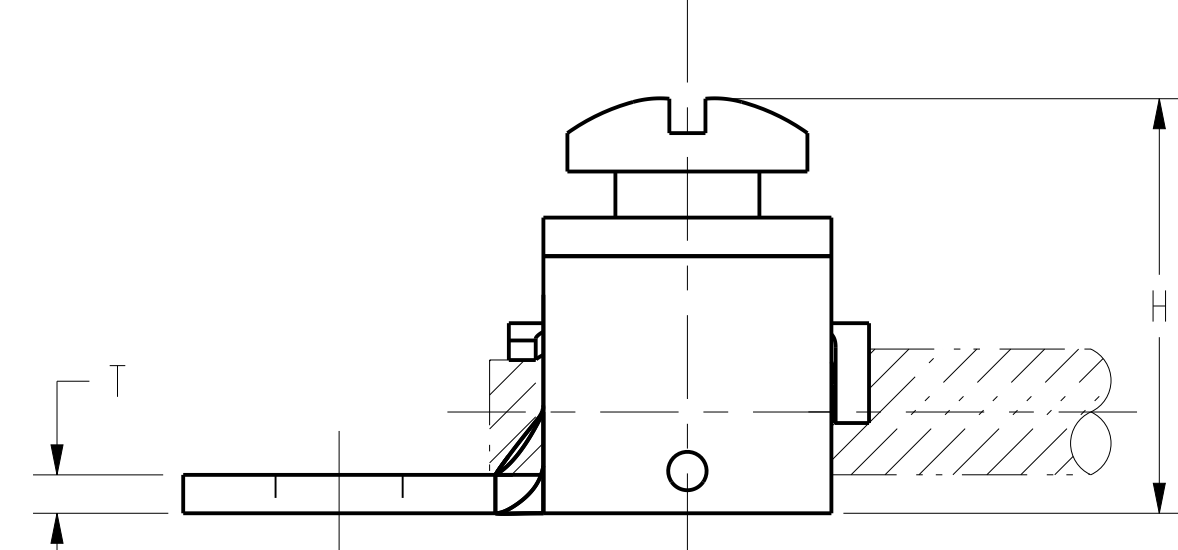
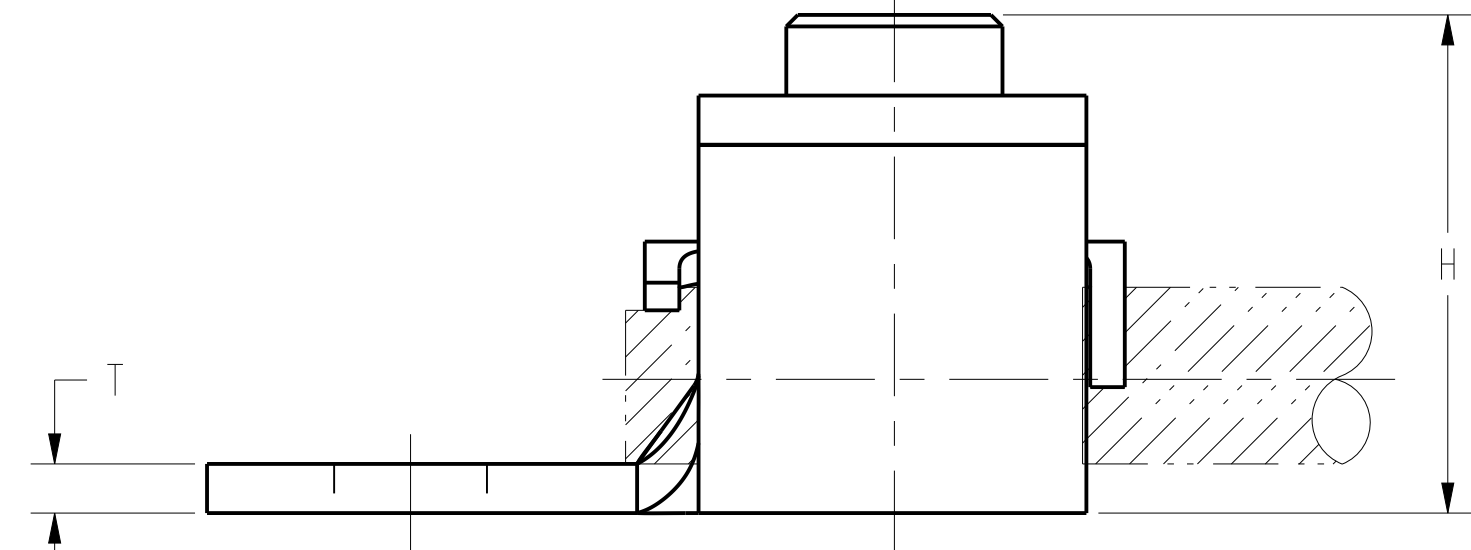


FIG. 1

FIG. 2

FIG. 2A

FIG. 3

- NOTES:
- 1 FINGER TIGHT TORQUE WITH MAXIMUM CONDUCTOR.
 - 2 SUFFIX "TP" ON CATALOG NUMBER DENOTES TIN PLATE. EXAMPLE: KPA8CTP
SUFFIX "UP" DENOTES UNPLATED.
 - 3. MATERIAL: COPPER ALLOY.
 - 4 N DIMENSION FOR KPA8C-- CONNECTORS NOT TO EXCEED .240 IN.
 - 5 STAINLESS STEEL SCREW
 - 6 SCREW HEAD PAINTED GREEN.

ITEM NO: ---		SCALE: 3:1	
SCRULUG™			
CAT. NO:	KPA-- (SEE TABLE)		
DRAWN BY:	JSG	01/21/92	
CHECKER:	GP	03/10/92	
DSN APPVL:	KH	01/23/92	
MFG APPVL:	--	--	
GA APPVL:	AL	01/27/92	
MKT APPVL:	LH	01/28/92	
PROD FAM:	--	--	
PROJECT #:	--	SIZE	SD207546-01
DOCUMENT TYPE:	Sales	D	SHEET 1 OF 1
REL LEVEL:	Released		

TO ORDER BURNDY® PRODUCTS CALL
 UNITED STATES:
 1-800-346-4175 (LONDONDERRY, NH)
 CANADA:
 1-800-361-6975 (QUEBEC)
 1-800-367-6487 (ALL OTHER PROVINCES)
 FOR PRODUCT INFO: <http://www.burndy.com>



REV: CREO 08/10/21