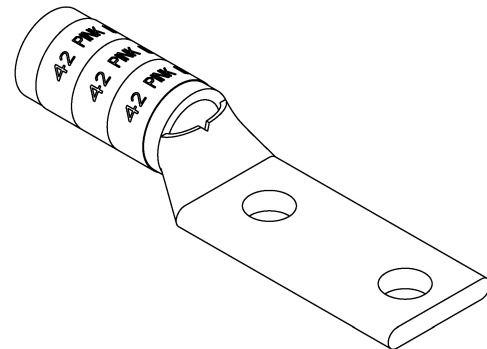
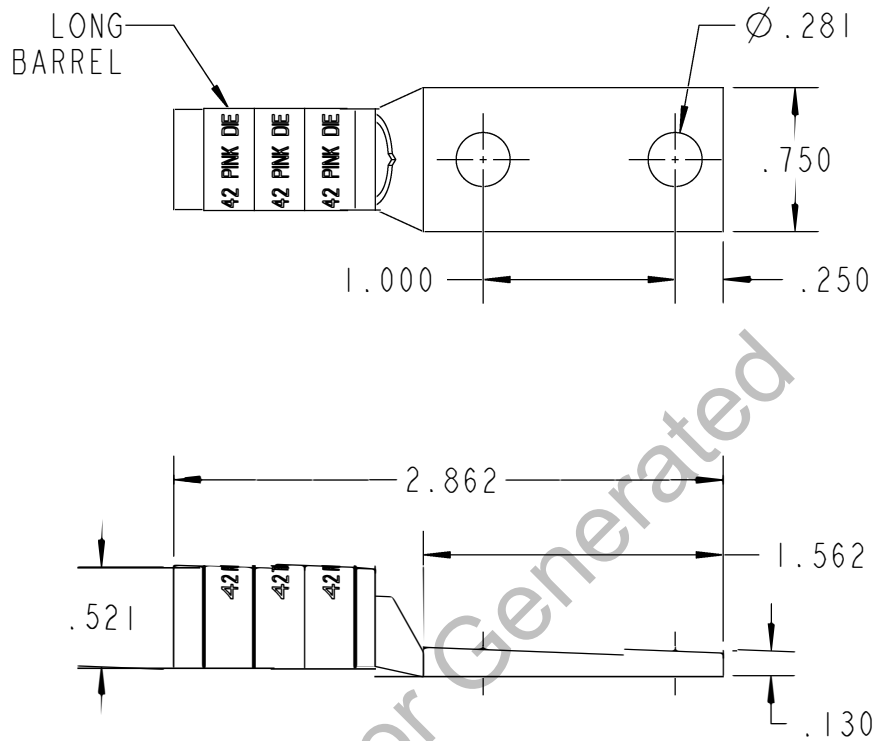


# Color-Keyed®

CATALOG NO. 256-30695-1018P



WIRE SIZE: 1/0  
MATERIAL: HIGH CONDUCTIVITY  
COPPERFINISH: TIN PLATED

## GENERAL NOTES

1. ALL DIMENSIONS ARE FOR REFERENCE ONLY.
2. DIMENSIONS IN BRACKETS [ ] ARE IN METRIC UNITS.

## REVISIONS

\*\* SEE ERN ( \*\*\*\* )  
FOR APPROVAL SIGNATURES  
& RELEASE DATE.  
PROJECT NO: \*\*\*\*

**Thomas&Betts**  
www.tnb.com

DESCRIPTION:

**2 HOLE LUG**

ORIGINAL PROJECT NO / ( ERN NO )

/ ( )

SHEET NO:

1 OF 1

REV. NO:

0

DRAWING NO: WSD-001916

**256-30695-1018P**