

SIEMENS

Indoor Load Center

Catalog Number

RE0816ML1100K

Enclosure

Type 1

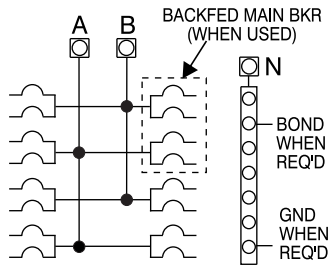
Rating:

100 Amps. Max. See Main Breaker Rating If Used.
Main Breaker requires ECMBR1 Hold-Down Kit.
120/240 Volts ~ 1 Phase, 3 Wire
208Y/120 Volts ~ 1 Phase, 3 Wire

Suitable For Use As Service Equipment

when main breaker is installed or when not more than six main disconnecting means are provided. When used as service equipment, apply "service disconnect" label(s) to front next to appropriate breaker handle(s).

Sum of QT breakers not to exceed 110 Amps per branch circuit bus stab.



Use Copper or Aluminum Wire for all panel terminals and on circuit breaker terminals when breakers are so marked.

Line Terminals A, B, and N

Suitable for 60°/75°C conductors.
Wire size: Copper and Aluminum
#4-2/0 AWG. Torque terminals to 45 lb.-ins.

Load Terminals See markings on breaker for torque requirements and conductor rating.

ECLK1-2 Lug Kit Suitable for 60°/75°C conductors. Wire size: Copper and Aluminum #4-2/0 AWG. Torque terminals to 45 lb.-ins.

General Information

Remove twistouts from trim only where breakers will be installed. All openings must be filled with breakers or filler plates. Circuit breaker overload trip position midway between ON and OFF. To reset, move handle to OFF position then turn ON. For installation by a qualified person in accordance with all local electrical codes and/or the National Electrical Code®.

Short Circuit Current Rating

This panelboard has a maximum short circuit current rating of 10,000 Amps RMS symmetrical, 120/240V~. Any circuit breaker installed, replaced, or added in this panelboard must be manufactured by Siemens. This equipment has been designed for use only with Siemens Type QP, QT, QAF, QAF2, QFGA2, QPF, QPF2, and QE circuit breakers. Use of other circuit breakers in this equipment will void the warranty.

Neutral Bar Wire Size	
Wire Size	Torque
14-10 AWG CU	20 lb.-ins.
12-10 AWG AL	20 lb.-ins.
8 AWG CU/AL	25 lb.-ins.
6 AWG CU/AL	35 lb.-ins.
4 AWG CU/AL	45 lb.-ins.

- Accessory Kits:**
 Filler Plate: ECQF3
 Breaker Hold Down: ECMBR1
 Door Lock: ECQFL2
 2/0 Branch Neutral Terminal: ECLK1-2

DIRECTORY

1	2
3	4
5	6
7	8

Siemens Industry, Inc. Norcross, Georgia U.S.A. **J2** 40901631 0101 Rev.00

© 2018 Copyright Siemens Industry, Inc. Assembled in Mexico

® The National Electrical Code is a registered trademark of the National Fire Protection Association.

Important: Do not allow petroleum based (hydrocarbon) sprays, chemicals, solvents or any paint to contact interior components. Petroleum based chemicals can cause degradation of electrical insulating materials.

⚠ DANGER

Hazardous Voltage.
Will cause death, serious injury or substantial property damage.

Turn off power supplying this equipment before working inside.



⚠ PELIGRO

Voltaje peligroso. Causará la muerte, lesiones graves o daño substancial a la propiedad.

Desconecte el suministro de energía a este equipo antes de trabajar en su interior.