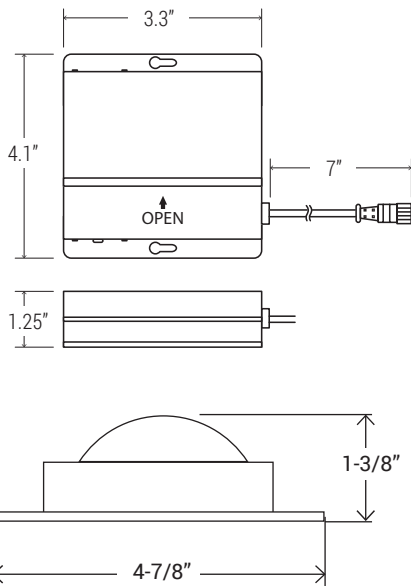




EASY 5 COLORS
SELECTOR
2700K • 3000K • 3500K • 4000K • 5000K



ADJUSTABILITY



NOMINAL LUMENS	DELIVERED LUMENS	WATTAGE
700	741	9 W

Based on 3000K, 90+ CRI. Actual wattage may vary +/- 5%

INSTALLATION

Cut hole in ceiling. Insert luminaire into opening by squeezing spring clips on both sides of luminaire. The width in ceiling needed for the driver to fit is 3".

FEATURES

A high performance 4" LED luminaire, engineered for New Construction, Remodel or Retrofit to accommodate insulated or dropped ceiling installations. It is easily installed and is supplied with a remote driver. Its small aperture and shallow depth make it an ideal choice for unlimited applications.

LUMENS	700
CCT	30K/40K/50K 27K/30K/35K/40K/50K
CRI	90+
COLOR QUALITY	3-Step MacAdam Ellipse
CONSTRUCTION	Cast aluminum trim
TRIM OPTION	Round Adjustable
BEAM ANGLE	90 Degree
TRIM COLORS	WH (White), BK (Black)
DIMMING	DIMTR (Triac)
EMERGENCY	16W high voltage inverter (remote)
LIFETIME	50,000 Hours
PHOTOMETRIC TESTS	In Accordance with IES LM79-08, LM80 and TM-30, TM-21

- The LED slim disk is IC-Rated and Air-Tight ready and may be in direct contact with insulation.
- Can be installed in applications with plenum clearance.
- LED Slim disk may be installed in dry wall or suspended ceilings.
- 90 CRI standard.
- Flicker-free 120V forward-phase triac dimming down to 5%.
- Energy-Star, JA8 compliant.
- Even illumination of luminaire is achieved by utilizing patent-pending optics along with edge lit technology of LEDs.
- Aluminum die-cast body and trim.
- Estimated life output of 70% at 50,000 hours of life requiring virtually no maintenance.
- Ideal for applications where ceiling or top access is not available to service these luminaires.
- Ideal for applications where traditional recessed downlights may not be used because of limited plenum space.

SLIM TRIM



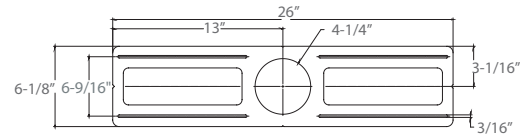
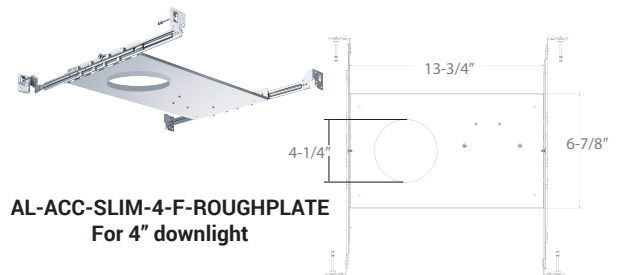
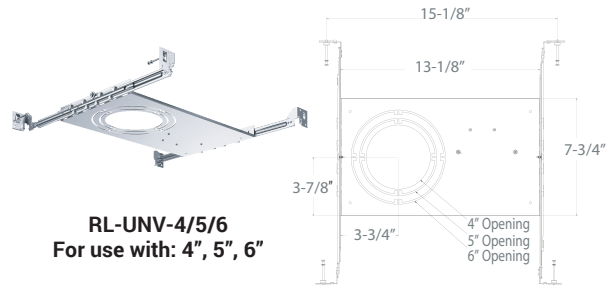
ACCESSORIES



RL-ACC-SLIM-1-10F
10-ft long extension



RL-ACC-SLIM-1-20F
20-ft long extension



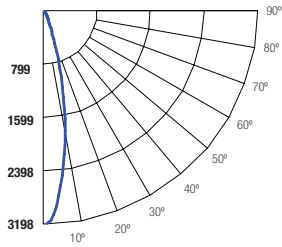
RL-ACC-SLIM-4-ROUGHPLATE
Mounting plate for use with 4" downlights

EXAMPLE: **RL473-700L-DIMTR-120-30K/40K/50K-90-WH**

TYPE	LUMEN	CCT	CRI	FINISH
RL473	<input type="checkbox"/> 700L-DIMTR-120	<input type="checkbox"/> 30K/40K/50K <input type="checkbox"/> 27K/30K/35KK/40K/50K	<input type="checkbox"/> 90+	<input type="checkbox"/> WH-White <input type="checkbox"/> BK-Black

RL-ACC-SLIM-1-10F

OPTIONS
<input type="checkbox"/> RL-ACC-SLIM-1-10F - 10ft Long Extension
<input type="checkbox"/> RL-ACC-SLIM-1-20F - 20ft Long Extension
<input type="checkbox"/> RL-UNV-4/5/6 - Universal Mounting Plate for 4", 5" and 6"
<input type="checkbox"/> RL-ACC-SLIM-4-ROUGHPLATE - 4" Mounting Plate
<input type="checkbox"/> AL-ACC-SLIM-4-F-ROUGHPLATE - 4" Flanged Roughplate

RL473-700L-DIMTR-120-30K-40K-50K-90-WH
TEST NO.: EL103019126
INPUT WATTS: 8.91823
LUMENS: 741
CRI: 90
EFFICACY: 83
CCT: 30/40/50K
SPACING CRITERIA: 0.42
Candle Power Distribution (Candelas)

Zonal Lumens Summary

Zone	Lumens	%Lamp	%Fixt
0-20	517.61	69.90	69.90
0-30	627.11	84.70	84.70
0-40	675.43	91.20	91.20
0-60	724.52	97.80	97.80
0-80	739.93	99.90	99.90
0-90	739.94	99.90	99.90

Luminance (Average candela/M²)

Angle in Degrees	Average 0°	Average 45°	Average 90°
45	18023	17858	18318
55	13899	13798	14001
65	10108	10408	10659
75	3968	4563	5092
85	39	39	39

Lumens Per Zone

Zone	Lumens
0-10	229.56
10-20	288.05
20-30	109.49
30-40	48.33
40-50	28.63
50-60	20.46
60-70	12.12
70-80	3.29
80-90	0.01

Candela Tabulation

Q	
0	3180.70
5	2655.50
15	1058.77
25	226.89
35	77.47
45	37.23
55	23.29
65	12.48
75	3.00
85	0.01
90	0.01

Coefficients of Utilization - Zonal Cavity Method

Effective Floor Cavity Reflectance 0.20

Cone of Light			
2	1,101	0.7	0.7
4	292	1.4	1.4
6	127	2.0	2.1
8	70.9	2.7	2.8
10	46.2	3.4	3.4
12	31.8	4.1	4.1

BEAM DIA. MEASURED AT 50% OF NADIR F.C.

ROOM CAVITY RATIO	RC	80%				70%				50%				30%				10%				0%
	RW	70%	50%	30%	10%	70%	50%	30%	10%	50%	30%	10%	50%	30%	10%	50%	30%	10%	0%			
	0	119	119	119		116	116	116	116	111	111	111	106	106		102	102	102	100			
	1	114	112	110	108	112	110	108	106	106	104	103	102	101	100	99	98	97	95			
	2	110	106	102		108	104	101	98	101	98	96	98	96	94	95	93	92	90			
	3	105	100	96	94	99	95	92	96	93	90	88	90	89	89	92	89	88	86			
	4	101	95	91	87	100	94	90	87	92	88	86	90	87	85	88	86	84	82			
	5	98	91	86	83	96	90	86	82	88	85	82	87	84	81	85	83	80	79			
	6	94	87	82	79	93	86	82	79	85	81	78	84	80	78	83	80	77	76			
	7	91	84	79	76	90	83	79	76	82	78	75	81	77	75	80	77	74	73			
8	88	81	76	73	87	80	76	73	79	75	72	78	75	72	78	74	72	71				
9	86	78	73	70	85	78	73	70	77	73	70	76	72	70	75	72	70	68				
10	83	76	71	68	82	75	71	68	74	71	68	74	70	68	73	70	67	66				

RC - Ceiling Cavity Reflectance

RW - Wall Reflectance