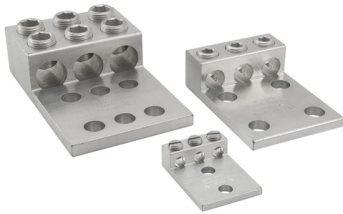


**SKU:** T3A2-2

**UPC:** 0783669896541

**Features & Benefits:**

**Description:** Aluminum Mechanical Lug, Conductor Range 2-14, 3 Ports, 2 Holes, 5/16in Bolt Size, Tin Plated, UL, CSA



## Specs

### Additional Class Attributes

Connection	Mechanical
Contains DE-OX®	No
Mounting Hole Type	Thru
Number of Conductors	3
Number of Mounting Holes	2
Number of Poles	1
Number of Ports / Wireways	2

### Dimensions

Dimension G (IN)	0.344
Dimension G (mm)	8.7376
Drive Size Main	NA
Drive Type Main	Slotted
Height (IN)	0.625
Height BX (IN)	2.25
Height (mm)	15.875
Length (IN)	2.187
Length (mm)	55.5498
Mounting Hole Diameter (IN)	0.344
Mounting Hole Diameter (mm)	8.7376
Mounting Hole Spacing (IN)	0.875
Mounting Hole Spacing (mm)	22.225
Tang Length (IN)	1.687
Tang Length (mm)	42.8498
Tang Thickness (IN)	0.187
Tang Thickness (mm)	4.7498
Tang Width (IN)	1.594
Tang Width (mm)	40.4876
Weight (LB)	0.087
Weight BX (LB)	1.4238
Width (IN)	1.594
Width BX (IN)	5
Width (mm)	40.4876

### Material and Finish

Conductor Material	Aluminum
Connector Finish	Tin

Insulation	NA
Material	Aluminum
Wire Binding Hardware Finish	Tin
Wire Binding Hardware Material	Aluminum

### Additional Technical Specifications

Conductor Type	Solid
----------------	-------

### Bolt and Screw Sizes

Mounting Bolt/Stud Size	5/16
Number of Wire Binding Screws per Port	1
Wire Binding Screw Size	3/8
Wire Binding Torque	2/0 - 2 AWG = 50

### General

Bag Quantity	1
Carton Quantity Description	STD PACK QTY 6
Direct Burial	No
Dual Rated	Yes
NEMA Code	S-588-3
UPC Code	78366989654

### Testing Standards

CSA File Number	LR-29601
CSA Standard	C22.2 No. 65-03
Prop65 Compliance	This product is in compliance with Prop65. It is not known to contain any chemicals associated with this regulation
UL Control Number	453G
UL / CULUS Specification	UL 486A/B Listed
UL File Number	E6207

### Environment and Temperature

Temperature Rating	90°C
--------------------	------

### Color

Color	Silver
-------	--------

### Conductor Ranges

Conductor Range AL Solid (Secondary, tap, load)	NA
Conductor Range AL Stranded (Primary, run, main, line)	2 Str - 14 Str
Conductor Range AL Stranded (Secondary, tap, load)	NA
Conductor Range CU Solid (Primary, run, main, line)	10 Sol - 14 Sol
Conductor Range CU Solid (Secondary, tap, load)	NA
Conductor Range CU Stranded (Primary, run, main, line)	2 Str - 14 Str
Conductor Range CU Stranded (Secondary, tap, load)	NA
Conductor Range AL Solid (Primary, run, main, line)	10 Sol - 14 Sol
Wire Combinations	NA

**Voltage**

**Voltage Rating**

35 kV