

Project: _____

Type: _____

Drawn by: _____ Catalogue #: _____

Date: _____

Individual Spec Sheet

L2WMG

LED LINKABLE WRAPAROUND

ORDERING INFORMATION

Order code: 68663
Model number: L2WMG-24-1-G2
UPC: 069549018273
Case quantity: 12

PHYSICAL DATA

Net weight (lbs): 2.65
Dimensions in (cm): 24 (61)
Lens material: Frosted polycarbonate
Housing material: White powder coating steel
Mounting: Surface wall and ceiling mount

PERFORMANCE DATA

Watts (W): 23
Volts (V AC): 120-277
Color temperature (K):¹ 4 000
Lumen output (lm):² 2 695
Efficacy (lm/W): 115
CRI: 84
Life L70 (h):³ 54 000
Tested LM-80 (h):³ 9 000
Dimming: Yes
Power factor: 0.94
THD (%): 12
Frequency (Hz): 50/60
Surge protection (kV): 1
Input current (A): 0.5
Output current (mA): 500
Operating temp. range: -20°C to 40°C (-4°F to 104°F)

¹ Typical color temperature range: +/- 5 %.

² Lumen values are derived from photometric testing. Initial lumens range: +/- 10 %.

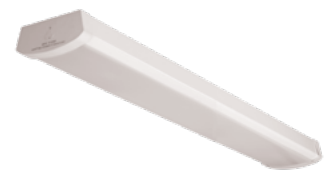
³ Life hours are derived from IESNA LM80-08 testing report and projected per IESNA TM-21-11 extrapolations.

COMPATIBLE ACCESSORIES

Order code	Model number
68858	Linkable Connector (No cable) ¹
68859	12" Linkable Cable Connector ¹
68860	48" Linkable Cable Connector
68861	72" Linkable Cable Connector
68862	96" Linkable Cable Connector
68863	48" Replacement Lens
69065	End cap for conduit entry (set of 2)

¹ One piece is included in the box, extra units can be purchased separately.

This lighting equipment complies with Canadian standard ICES-005 for use in residential applications. Data is based upon tests performed in a controlled environment. Actual performance can vary depending on operating conditions. Specifications are subject to change without notice.



Included Connectors



quick
ship



LED
fixture



dimnable



damp
location



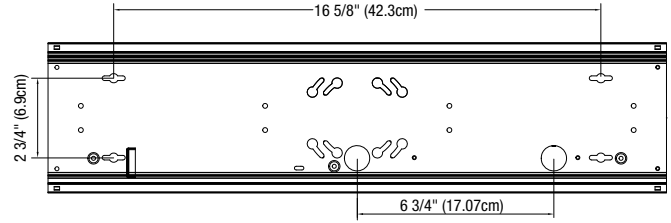
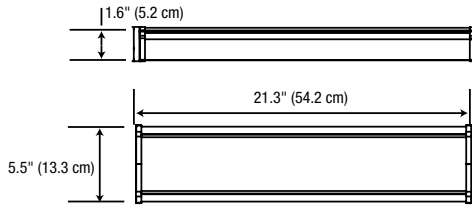
ICES
005



Not all products are qualified on the DLC QPL. To view our DLC qualified products, please consult the *DLC Qualified Products List* at www.designlights.org/search.

¹ Dimming with row mounting only available when hardwired.

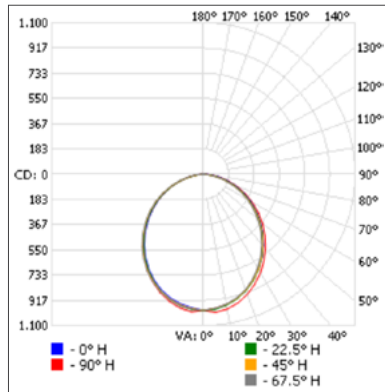
DIMENSIONS



PHOTOMETRIC DATA¹

68663 • L2WMG-24-1-G2 • 2 682.6 lm

Polar candela distribution



Zonal lumen summary

Zone	Lumens	% Fixture
0-30	752.8	28.1%
0-40	1 216.1	45.3%
0-60	2 099.5	78.3%
60-90	561.3	20.9%
70-100	255.9	9.5%
90-120	12.4	0.5%
0-90	2 660.8	99.2%
90-180	21.8	0.8%
0-180	2 682.6	100%

Illuminance at a distance

	Center beam fc	Beam width	
2.0'	247.6	5.1'	5.3'
4.0'	61.9	10.2'	10.6'
6.0'	27.5	15.2'	15.9'
8.0'	15.5	20.3'	21.2'
10.0'	9.9	25.4'	26.4'

■ Vert. spread: 103.6°
■ Horiz. spread: 105.8°

¹ Complete IES files available on our website.

Qty	Description	Price

I accept the specifications of the luminaire configuration mentioned above.

Name: _____
 Company: _____
 Signature: _____

Date: _____

Data is based upon tests performed in a controlled environment. Actual performance can vary depending on operating conditions. All products are subject to change or may be discontinued any time without notice.