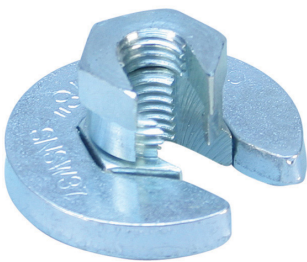




## SNSW FLANGED NUT, 1/2" ROD, 1.9" DIA

### CATALOG NUMBER

**SNSW50**



### FEATURES

Ideal for retrofit projects, such as trapeze installations, where disassembly of the support system is not desired

Use as a stopper when installing nVent CADDY Rod Lock assemblies

Can be easily installed, removed, and repositioned at any location along the threaded rod

Ready to use out of the box and eliminates multiple pieces of standard hardware

Functions as a hex nut and flat washer combined

Washer is wide enough to work with standard strut channel profiles

### PRODUCT ATTRIBUTES

Material: Steel

Finish: Electrogalvanized

Static Load Safety Factor: 3:1

Rod Size: 1/2"

Diameter: 1.900"

A: 0.950"

B: 1/4"

Wrench Size: 1"

Static Load: 300 lb

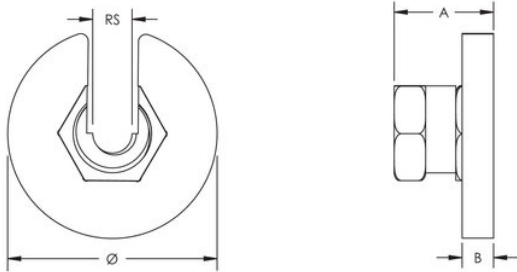
## ADDITIONAL PRODUCT DETAILS

---

For use on plain and electro zinc plated hardware only.

## DIAGRAMS

---



## WARNING

---

nVent products shall be installed and used only as indicated in nVent's product instruction sheets and training materials. Instruction sheets are available at [www.nvent.com](http://www.nvent.com) and from your nVent customer service representative. Improper installation, misuse, misapplication or other failure to completely follow nVent's instructions and warnings may cause product malfunction, property damage, serious bodily injury and death and/or void your warranty.

### North America

+1.800.753.9221

Option 1 – Customer Care

Option 2 – Technical Support

### Europe

Netherlands:

+31 800-0200135

France:

+33 800 901 793

### Europe

Germany:

800 1890272

Other Countries:

+31 13 5835404

### APAC

Shanghai:

+ 86 21 2412 1618/19

Sydney:

+61 2 9751 8500



Our powerful portfolio of brands:

**nVent.com** CADDY ERICO HOFFMAN RAYCHEM SCHROFF TRACER

© 2022 nVent. All nVent marks and logos are owned or licensed by nVent Services GmbH or its affiliates. All other trademarks are the property of their respective owners.

nVent reserves the right to change specifications without notice.