

Pilot and Signaling Devices

Heavy-Duty 22.5 mm Watertight/Oiltight Pilot Lights

C-2000

Section 9

Standard

600 VAC Max., 300 VDC Max.

10 Amps Continuous AC, 2.5 Amps Continuous DC

Selection Process

Select operator below + Select power supply from page 9-92 & 9-93 + Select nameplate, if required, from pages 9-95 to 9-97 = Complete Unit



Standard Pilot Lights

Standard Operators

Operator Style	Lens Type	Power Supply Type	Product Number
Round Polished Chrome	Diffused	—	P9CL*D
Round Polished Chrome	Refracted	—	P9CL*R
Round Polished Chrome	Glass lens	—	P9CL*V
Round Polished Chrome	None	—	P9CL00
Round Satin Chrome	Diffused	—	P9ML*D
Round Satin Chrome	Refracted	—	P9ML*R
Round Satin Chrome	Glass lens	—	P9ML*V
Round Satin Chrome	None	—	P9ML00
Round Engineered Plastic	Diffused	—	P9XL*D
Round Engineered Plastic	Refracted	—	P9XL*R
Round Engineered Plastic	None	—	P9XL00
Square Engineered Plastic	Diffused	—	P9SL*D
Square Engineered Plastic	None	—	P9SL00
Unibloc	Diffused	Full Voltage-120 V	P9XU*DD0 ¹
Unibloc	Refracted	Full Voltage-120 V	P9XU*RD0 ¹
Unibloc	Diffused	Resistor-120 V	P9XU*DRN ¹
Unibloc	Refracted	Resistor-120 V	P9XU*RRN ¹
Unibloc	None	Full Voltage-120 V	P9XU00D0 ¹
Unibloc	None	Resistor-120 V	P9XU00RN ¹

¹Available only as a pilot light, Unibloc combines an indicator light and power source in one unit, producing a savings for the customer. Full-voltage versions do not include lamp; select lamp from page 9-119. Resistor versions are 130V (ac/dc) and include BA9S 130 V/2W lamp.

Replace asterisk (*) in product number with color code digit from Colors table below.

*Colors

Color	Red	Green	Yellow	Blue	White	Orange	Clear
*Color Code	R	V	G	L	B	A	I



Specially Marked Diffusers: See page 9-102

Outlines and Dimensions: See page 9-87
Accessories: See page 9-102 to 9-111
Technical Data: See page 9-119 to 9-125

Pilot and Signaling Devices

Heavy-Duty 22.5 mm Watertight/Oiltight Pilot Lights

Section 9

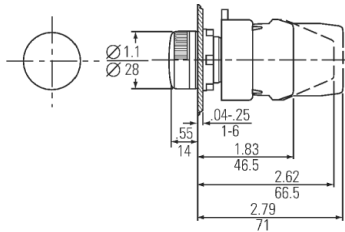
C-2000

Standard

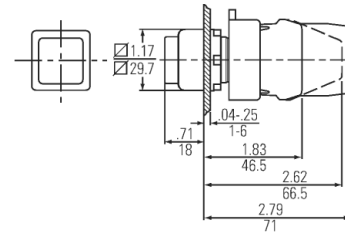
Outlines and Dimensions ($\frac{\text{in}}{\text{mm}}$) (For Estimating Only)

600 VAC Max., 300 VDC Max.

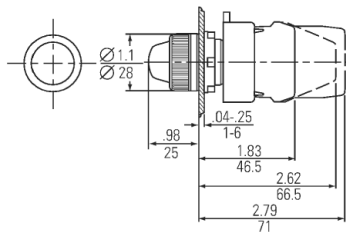
10 Amps Continuous AC, 2.5 Amps Continuous DC



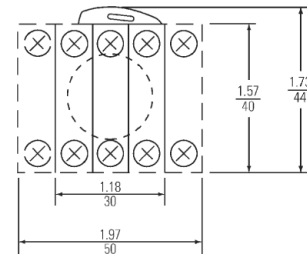
Round Indicating Light



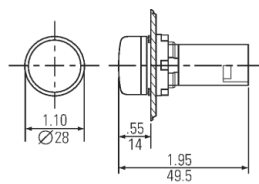
Square Indicating Light



Round Indicating Light—Glass Lens



Typical Back Side View



Round Indicating Light—Unibloc



Pilot and Signaling Devices Heavy-Duty 22.5 mm Watertight/Oiltight Accessories C-2000

Section 9

Power Supplies and Contact Blocks

600 VAC Max., 300 VDC Max.

10 Amps Continuous AC, 2.5 Amps Continuous DC

Full Voltage Power Supplies AC/DC

Bulb Type	Terminal type	Lamp Operational Mode	Voltage	Product Number
Incandescent	Screw Terminal	Steady	No lamp	P9PDNV0
Incandescent	Screw Terminal	Steady	6V	P9PDNVA
Incandescent	Screw Terminal	Steady	12V	P9PDNVB
Incandescent	Screw Terminal	Steady	24V	P9PDNVD
Incandescent	Screw Terminal	Steady	48V	P9PDNVG
Incandescent	Screw Terminal	Steady	60V	P9PDNVH
Incandescent	Screw Terminal	Steady	130V	P9PDNVL
Incandescent	Screw Terminal	Flashing	24V	P9PDMVD
Incandescent	Screw Terminal	Flashing	120V	P9PDMVJ
Incandescent	Screw Terminal	Panel Test	No lamp	P9PDTV0
Incandescent	Screw Terminal	Panel Test	6V	P9PDTVA
Incandescent	Screw Terminal	Panel Test	12V	P9PDTVB
Incandescent	Screw Terminal	Panel Test	24V	P9PDTVD
Incandescent	Screw Terminal	Panel Test	48V	P9PDTVG
Incandescent	Screw Terminal	Panel Test	60V	P9PDTVH
Incandescent	Screw Terminal	Panel Test	130V	P9PDTVL
Incandescent	Quick-Connect Terminal	Steady	No lamp	P9PDNF0
Incandescent	Quick-Connect Terminal	Steady	6V	P9PDNFA
Incandescent	Quick-Connect Terminal	Steady	12V	P9PDNFB
Incandescent	Quick-Connect Terminal	Steady	24V	P9PDNFD
Incandescent	Quick-Connect Terminal	Steady	48V	P9PDNFG
Incandescent	Quick-Connect Terminal	Steady	60V	P9PDNFH
Incandescent	Quick-Connect Terminal	Steady	130V	P9PDNFL
LED	Screw Terminal	Steady	6V	P9PDNVAL*
LED	Screw Terminal	Steady	12V	P9PDNVBL*
LED	Screw Terminal	Steady	24V	P9PDNVDL*
LED	Screw Terminal	Steady	48V	P9PDNVGL*
LED	Screw Terminal	Steady	120V ²	P9PDNVJL*
LED	Screw Terminal	Flashing	24V	P9PDMVDL*
LED	Screw Terminal	Flashing	120V ²	P9PDMVJL*
LED	Screw Terminal	Panel Test	6V	P9PDTVAL*
LED	Screw Terminal	Panel Test	12V	P9PDTVBL*
LED	Screw Terminal	Panel Test	24V	P9PDTVDL*
LED	Screw Terminal	Panel Test	48V	P9PDTVGL*
LED	Screw Terminal	Panel Test	120V ²	P9PDTVJL*
LED	Quick-Connect Terminal	Steady	6V	P9PDNFAL*
LED	Quick-Connect Terminal	Steady	12V	P9PDNFBL*
LED	Quick-Connect Terminal	Steady	24V	P9PDNFDL*
LED	Quick-Connect Terminal	Steady	48V	P9PDNFGL*
LED	Quick-Connect Terminal	Steady	120V ²	P9PDNFJL*
Neon	Screw Terminal	Steady	110V	P9PDNVIN ¹
Neon	Screw Terminal	Steady	220V	P9PDNVMN
Neon	Screw Terminal	Panel Test	110V	P9PDTVIN ¹
Neon	Screw Terminal	Panel Test	220V	P9PDTVMN ¹
Neon	Quick-Connect Terminal	Steady	110V	P9PDNFIN ¹
Neon	Quick-Connect Terminal	Steady	220V	P9PDNFMN
Integrated LED	Screw Terminal	Steady	24 VAC/DC	P9PLNVD*
Integrated LED	Screw Terminal	Steady	120V	P9PLNVJ*
Integrated LED	Screw Terminal	Steady	230V	P9PLNVN*
Integrated LED	Screw Terminal	Flashing	24 VAC/DC	P9PLFVD*
Integrated LED	Screw Terminal	Flashing	120V	P9PLFVJ*
Integrated LED	Screw Terminal	Flashing	230V	P9PLFVN*

¹Neon bulbs are recommended for use only with clear, red, and yellow lenses.

²AC only

Transformer Power Supplies 50/60 Hz AC

Bulb Type	Terminal type	Lamp Operational Mode	Voltage	Product Number
Incandescent	Screw Terminal	Steady	48V	P9PTNVG
Incandescent	Screw Terminal	Steady	60V	P9PTNVH
Incandescent	Screw Terminal	Steady	110-120V	P9PTNVJ
Incandescent	Screw Terminal	Steady	220-250V	P9PTNVN
Incandescent	Screw Terminal	Steady	277-280V	P9PTNVR
Incandescent	Screw Terminal	Steady	380V	P9PTNVU
Incandescent	Screw Terminal	Steady	415-440V	P9PTNVW
Incandescent	Screw Terminal	Steady	480-500V	P9PTNVY
Incandescent	Screw Terminal	Steady	550-600V	P9PTNVZ
Incandescent	Screw Terminal	Flashing	48V	P9PTMVG
Incandescent	Screw Terminal	Flashing	60V	P9PTMVH
Incandescent	Screw Terminal	Flashing	110-120V	P9PTMVJ
Incandescent	Screw Terminal	Flashing	220-250V	P9PTMVN
Incandescent	Screw Terminal	Flashing	277-280V	P9PTMVR
Incandescent	Screw Terminal	Flashing	380V	P9PTMVU
Incandescent	Screw Terminal	Flashing	415-440V	P9PTMVW
Incandescent	Screw Terminal	Flashing	480-500V	P9PTMVG
Incandescent	Screw Terminal	Flashing	550-600V	P9PTMVZ
LED	Screw Terminal	Steady	48V	P9PTNVGL*
LED	Screw Terminal	Steady	60V	P9PTNVHL*
LED	Screw Terminal	Steady	110-120V	P9PTNVJL*
LED	Screw Terminal	Steady	220-250V	P9PTNVNL*
LED	Screw Terminal	Steady	277-280V	P9PTNVRL*
LED	Screw Terminal	Steady	380V	P9PTNVUL*
LED	Screw Terminal	Steady	415-440V	P9PTNVWL*
LED	Screw Terminal	Steady	480-500V	P9PTNVYL*
LED	Screw Terminal	Steady	550-600V	P9PTNVZL*
LED	Screw Terminal	Flashing	48V	P9PTMVG
LED	Screw Terminal	Flashing	60V	P9PTMVHL*
LED	Screw Terminal	Flashing	110-112V	P9PTMVJL*
LED	Screw Terminal	Flashing	220-250V	P9PTMVNL*
LED	Screw Terminal	Flashing	277-280V	P9PTMVRL*
LED	Screw Terminal	Flashing	380V	P9PTMVUL*
LED	Screw Terminal	Flashing	415-440V	P9PTMVWL*
LED	Screw Terminal	Flashing	480-500V	P9PTMVG
LED	Screw Terminal	Flashing	550-600V	P9PTMVZL*

Complete product number by inserting color code digit in place of asterisk (*).

*LED Colors

LED Color	Red	Green	Yellow	Orange	Blue	White
Color Code	R	V	G	A	L	B



Outlines and Dimensions: See page 9-94