

# Racks

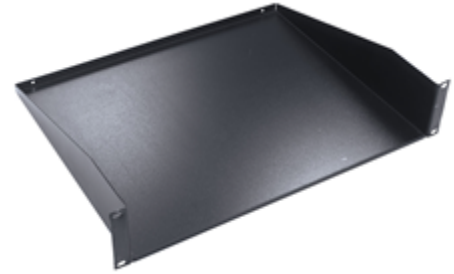
## Relay Rack Accessory

### Cantilevered Shelf, Solid

# HUBBELL

#### Features

- Shelving provides additional space for many sizes of equipment
- Works great inside of mounted enclosures, on relay rack or inside of cabinet
- Solid shelf for holding equipment and small items



#### Ordering Information

Rack Units	Finish	Catalog Number	UPC
2	Black powder coat	<b>MCCCS19</b>	662620787565

#### Listings

EIA/ECA-310-E Universal Mounting Pattern

#### Dimensions- inches (mm)

A	3.5" (89)
B	19" (190)
C	14" (356)

#### Specifications

Material	Steel
Material Gauge	16 ga
Color	Black

#### Characteristics

Weight Capacity	50 lb
Shelf Type	Solid

#### Accessories

M6 Cage Nut pack	<b>CKM6</b>
#12-24 Screws	<b>1224RRSCRW20</b>

#### Online Resources

[eCatalog](#)