

CSRP-1L / CSRP-2L / CSRP-3L / CSRP12-2L STEEL COMBO RUNNING MAN



The commercial CSRP-1L, CSRP-2L, CSRP-3L, CSRP12-2L features a slim profile that prevents light leaks. Easy to install design, available in 6 VDC 27 or 36 W with over 4 hours duration and 12 VDC 72 W with over 8 hours duration.

FEATURES & SPECIFICATIONS

CIRCUITRY

- 120/347 VAC 60 Hz input, field selectable
- 1.9 W power consumption on AC input for LED exit portion of combination sign
- LED Emergency DC wattages as follows:
 6 VDC = 0.9 W;
 12 VDC = 1.8 W
- 6 VDC 27 or 36 W and 12 VDC 72 W emergency power output versions (as specified)

- Momentary push button test switch
- Pilot LED for AC ON and CHARGE
- Fully automatic, current limited charger
- Solid state design and construction
- Brownout and short circuit protection
- Temperature compensated
- Maintenance free, sealed lead acid battery

MECHANICAL


- 20 Gauge steel construction
- Slide out faceplates and backplates for rapid and simple installation
- Universal spider knock-out pattern stamped into backplate for junction box mounting
- Universal models include ceiling or end mount, field installable canopy kit c/w spider plate
- Front head mounting is standard

- Multiple conduit entry knockouts
- White powder coat finish standard
- PAR18 small style, high impact thermoplastic heads
- LED heads with limited lifetime warranty¹


COMPLIANCES

- CSA Certified to C22.2 #141-15, C860
- Meets requirement of ICES-005

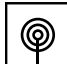
OVERVIEW			
LIGHT SOURCE	LED	SIGN EMERGENCY POWER CONSUMPTION	6 VDC = 0.9 W 12 VDC = 1.8 W
INPUT VOLTAGE (VAC)	120/347	OUTPUT VOLTAGE (VDC)	6, 12
SIGN POWER CONSUMPTION (W)	1.9	OUTPUT CAPACITY (W)	27 - 72




QUICKSHIP



LED



ICES
005



Energy Verified
Energie Vérifiée

¹ For complete warranty details, please see the terms and conditions on our website.

CSRP-1L / CSRP-2L / CSRP-3L / CSRP12-2L

QUICK SHIP ORDERING GUIDE



PART NUMBER	DC VOLTS [VDC]	WATTS [W]	NBR OF HEADS	HEAD	LAMP [W]	LIGHT SOURCE	INPUT VOLTS [VAC]	COLOR
CSRP-1L	6	27	2	SM	2	LED	120/347	WHITE
CSRP-2L	6	36	2	SM	2	LED	120/347	WHITE
CSRP-3L	6	36	2	SM	3	LED	120/347	WHITE
CSRP12-2L	12	72	2	SM	2.5	LED	120/347	WHITE

QUICK SHIP: Product availability is subject to change without notice. Please contact your AimLite customer service representative to confirm inventory levels at time of order.

WIREGUARD¹

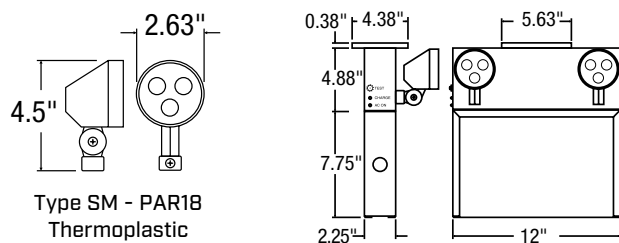
	PART NUMBER	DIMENSIONS (IN)
WALL MOUNT	WGD510	17.25 X 17.25 X 7
CEILING MOUNT	WGD650	13.75 X 12.25 X 16.5
END MOUNT	WGD650	13.75 X 12.25 X 16.5

¹ Please contact your AimLite customer service representative for more information.

MODEL RATINGS

MODEL	VOLTS [V]	WATTAGE CAPACITIES [W]			
		30 MIN.	60 MIN.	90 MIN.	120 MIN.
CSRP-1L	6	27	14	9	7
CSRP-2L	6	36	18	12	9
CSRP-3L	6	36	18	12	9
CSRP12-2L	12	72	36	24	18

DIMENSIONS



CONFIGURATIONS



Comes standard with three pictogram legends for direction selection.

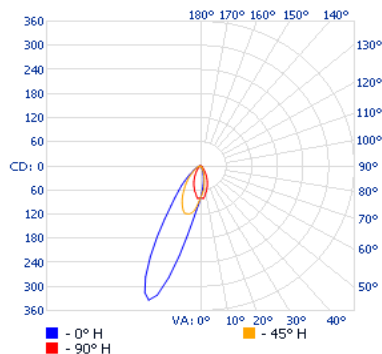
Data is based upon tests performed in a controlled environment. Actual performance can vary depending on operating conditions. All products are subject to change or may be discontinued any time without notice.

CSRP-1L / CSRP-2L / CSRP-3L / CSRP12-2L

PHOTOMETRIC DATA

PAR18-6V-2WLJ • 124.0LM

POLAR CANDELA DISTRIBUTION



ZONAL LUMEN SUMMARY

ZONE	LUMENS	% FIXTURE
0-30	68.9	55.6%
0-40	93.3	75.3%
0-60	116.1	93.6%
60-90	7.9	6.4%
0-90	124.0	100%

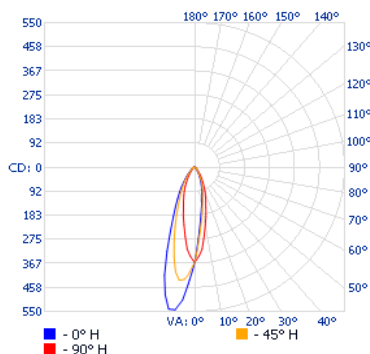
ILLUMINANCE AT A DISTANCE

CENTER BEAM FC		TABLE TITLE
2.0'	19.75	
4.0'	4.94	1.5' 1.6'
6.0'	2.19	2.2' 2.4'
8.0'	1.23	3.0' 3.2'
10.0'	0.79	3.7' 4.1'

■ Vert. Spread: 21.2° ■ Hor Spread: 22.9°

PAR18-12V-2.5WLJ • 183.5LM

POLAR CANDELA DISTRIBUTION



ZONAL LUMEN SUMMARY

ZONE	LUMENS	% FIXTURE
0-30	130.8	71.3%
0-40	156.1	85.1%
0-60	175.8	95.8%
60-90	7.6	4.2%
0-90	183.5	100%

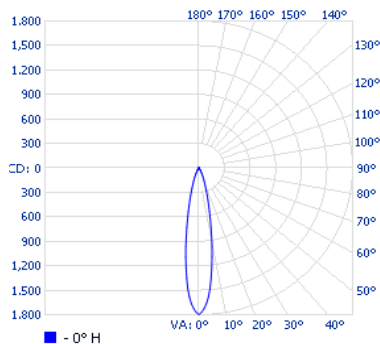
ILLUMINANCE AT A DISTANCE

CENTER BEAM FC		BEAM WIDTH	
2.0'	90.8	0.8'	0.8'
4.0'	22.7	1.6'	1.6'
6.0'	10.1	2.4'	2.4'
8.0'	5.7	3.2'	3.2'
10.0'	3.6	4.0'	4.0'

■ Vert. Spread: 22.4° ■ Hor Spread: 22.7°

PAR18-12V-3WLJ • 309.0LM

POLAR CANDELA DISTRIBUTION



ZONAL LUMEN SUMMARY

ZONE	LUMENS	% FIXTURE
0-30	282.9	91.6%
0-40	297.5	96.3%
0-60	306.9	99.3%
60-90	2.1	0.7%
70-100	0.3	0.1%
90-120	0	0%
0-90	309.0	100%
90-180	0	0%
0-180	309.0	100%

ILLUMINANCE AT A DISTANCE

CENTER BEAM FC		BEAM WIDTH	
1.7'	622	0.6'	
3.3'	165	1.1'	
5.0'	71.8	1.7'	
6.7'	40.0	2.3'	
8.3'	26.1	2.8'	
10.0'	18.0	3.4'	

■ Vert. Spread: 19.3°