

F12 LED FLOOD LIGHT GEN 2

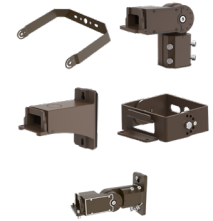
**QUICK AND EASY MOUNTING ACCESSORIES
 (SOLD SEPARATELY)**

**SELECTABLE COLOR TEMPERATURE (3 000/4 000/5 000 K)¹
 POWER SELECTABLE¹**



FLOOD LUMINAIRES
 Single Power and Single CCT

FLOOD LUMINAIRES
 Power and CCT Selectable



FLOOD/AREA LIGHT
 MOUNTING ACCESSORIES
 (Sold separately²)

This versatile family of highly efficient and powerful LED flood lights features a wide range of lumen packages, external selectable power switches on certain configurations and multiple color temperature options as well as various mounting options. Finished in bronze, with its modern design, each luminaire is compatible with various universal mountings which allow for wall, ground and pole mount. Typical applications include general lighting of grounds, storage yards, car dealerships, parking areas as well as flood lighting of signs and building facades.

FEATURES & SPECIFICATIONS

CONSTRUCTION

Housing

- This luminaire is made of aluminum die-cast housing
- Standard powder coat finish color is textured bronze
- Aluminum heat sink for a better heat dissipation
- 3.5' cable standard in all configurations

Lens

- Outfitted with a clear polycarbonate lens that is UV resistant
- Offered in a NEMA 7Hx6V or 7Hx7V depending of the power of the configuration

Mounting

Universal mounting system allowing the following mountings to be easily installed:

- Yoke
- Trunnion
- Slipfitter
- Square or round pole arm [4", 5" & 6"]
- Slipfitter with wall mount adapter

TECHNICAL SPECIFICATIONS

- Drivers 120-277 V and 347-480 V
- 0-10 V dimming standard
- 10 kV surge protection standard
- Color temperatures: 3 000 K/4 000 K/5 000 K, 4 000 K and 5 000 K
- Estimated lifespan of 60 000 hours to L70
- Ambient temperature: -40 to 40 °C

COMPLIANCES

- IP65
- Wet location
- IK08
- Meets requirements of ICES-005 issue 5 for class B products
- cULus

OVERVIEW			
LIGHT SOURCE	LED	EFFICACY (LM/W)	125 - 149
WATTS (W)	100, 150, 230, 300, 400 50/80/100/150 150/200/240/300	CRI	70
LUMEN OUTPUT (LM)	6 800 - 58 148	COLOR TEMPERATURE (K)	3 000/4 000/5 000 4 000, 5 000
<div style="display: flex; flex-wrap: wrap; justify-content: space-around; align-items: flex-start;"> <div style="text-align: center; margin: 5px;"> <p>WARRANTY 5 YEAR WARRANTY</p> </div> <div style="text-align: center; margin: 5px;"> <p>CCT* 3CCT SELECTABLE¹</p> </div> <div style="text-align: center; margin: 5px;"> <p>W* POWER SELECTABLE</p> </div> <div style="text-align: center; margin: 5px;"> <p>QUICKSHIP</p> </div> <div style="text-align: center; margin: 5px;"> <p>LED</p> </div> <div style="text-align: center; margin: 5px;"> <p>DIMMABLE</p> </div> <div style="text-align: center; margin: 5px;"> <p>WET LOCATION</p> </div> <div style="text-align: center; margin: 5px;"> <p>65 IP RATING</p> </div> <div style="text-align: center; margin: 5px;"> <p>IK08 IMPACT RESISTANCE</p> </div> <div style="text-align: center; margin: 5px;"> <p>ICES 005</p> </div> <div style="text-align: center; margin: 5px;"> <p>DLC QPL PREMIUM</p> </div> <div style="text-align: center; margin: 5px;"> <p>cULus</p> </div> </div>			

¹ Selectable color temperature and power selectable are available on some configurations. Consult the Quick ship and technical specification table for more details.

² See below for part numbers.

Not all products are qualified on the DLC QPL. To view our DLC qualified products, please consult the DLC Qualified Products List at www.designlights.org/search.

Data is based upon tests performed in a controlled environment. Actual performance can vary depending on operating conditions.

All products are subject to change or may be discontinued any time without notice.

QUICK SHIP ORDERING GUIDE



PART NO	DLC UNIQUE ID	WATTS [W]	VOLTS [V]	COLOR TEMP. [K]	LUMEN OUTPUT [LM]	EFFICIENCY [LM/W]	CRI	DISTRIBUTION TYPE	FINISH	DIMMING [YES/NO]	B.U.G	EPA [FT ²]	LIFE L70 [HRS]	LED CURRENT [MA]	PF	THD [%]	TRADITIONAL EQUIVALENT [W]		CASE QTY [MASTER]
																	MH	HPS	
SINGLE POWER AND SINGLE CCT																			
F12S-L1AM-2-4K-BR	PL220CUPPWIB	100	120-277	4 000	13 127	131	70	7HX6V	BRONZE	YES	B3-U0-G2	0.53	>60 000	0.87-0.38	0.997	5.34	250-400	250-400	1
F12S-L1AM-10-4K-BR	PLATA1ARUY3Y	102	347-480	4 000	13 753	135	70	7HX6V	BRONZE	YES	B3-U0-G2	0.53	>60 000	0.5	0.907	12.82	250-400	250-400	1
F12S-L2AM-2-4K-BR	PL9P3GXR06U7	151	120-277	4 000	21 316	141	70	7HX6V	BRONZE	YES	B4-U0-G3	0.53	>60 000	1.412-0.601	0.995	5.14	400-1 000	400-1 000	1
F12S-L2AM-10-4K-BR	PLJA5A9UCV96	151	347-480	4 000	20 649	137	70	7HX6V	BRONZE	YES	B4-U0-G3	0.53	>60 000	0.8	0.934	10.49	400-1 000	400-1 000	1
F12M-L3AM-2-4K-BR	PL80YN4KW3D7	234	120-277	4 000	33 728	144	70	7HX7V	BRONZE	YES	B5-U0-G3	0.58	>60 000	2.191-0.947	0.997	6.01	400-1 000	400-1 000	1
F12M-L3AM-10-4K-BR	PLSPNDHM7VQV	230	347-480	4 000	31 954	139	70	7HX7V	BRONZE	YES	B5-U0-G3	0.58	>60 000	1.8	0.922	12.53	400-1 000	400-1 000	1
F12L-L4AM-2-4K-BR	PLRUA9HTM9YG	300	120-277	4 000	41 709	139	70	7HX6V	BRONZE	YES	B5-U0-G3	0.63	>60 000	2.703-1.168	0.998	5.87	400-1 000	1 000	1
F12L-L4AM-10-4K-BR	PLLW06KIWBEN	283	347-480	4 000	40 569	144	70	7HX6V	BRONZE	YES	B5-U0-G3	0.63	>60 000	1.5	0.905	16.26	400-1 000	1 000	1
F12X-L5AM-2-4K-BR	PLTYDLUKVR6J	396	120-277	4 000	58 000	145	70	7HX7V	BRONZE	YES	B5-U0-G4	0.71	>60 000	3.618-1.613	0.998	2.91	1 000	1 000	1
F12X-L5AM-10-4K-BR	PL9UY9BV7UH1	400	347-480	4 000	57 654	144	70	7HX7V	BRONZE	YES	B5-U0-G4	0.71	>60 000	2.09	0.955	7.56	1 000	1 000	1
F12S-L1AM-2-5K-BR	PLMDY3UE1IPB	100	120-277	5 000	13 255	133	70	7HX6V	BRONZE	YES	B3-U0-G2	0.53	>60 000	0.87-0.38	0.997	5.34	250-400	250-400	1
F12S-L1AM-10-5K-BR	PLWKEG4MSL53	102	347-480	5 000	13 889	136	70	7HX6V	BRONZE	YES	B3-U0-G2	0.53	>60 000	0.5	0.907	12.82	250-400	250-400	1
F12S-L2AM-2-5K-BR	PLRRR26SJ1L	151	120-277	5 000	21 518	142	70	7HX6V	BRONZE	YES	B4-U0-G3	0.53	>60 000	1.412-0.601	0.995	5.14	400-1 000	400-1 000	1
F12S-L2AM-10-5K-BR	PLIW78EWLTJJ	151	347-480	5 000	20 846	138	70	7HX6V	BRONZE	YES	B4-U0-G3	0.53	>60 000	0.8	0.934	10.49	400-1 000	400-1 000	1
F12M-L3AM-2-5K-BR	PL7LPGK6JRSU	234	120-277	5 000	34 040	146	70	7HX7V	BRONZE	YES	B5-U0-G3	0.58	>60 000	2.191-0.947	0.997	6.01	400-1 000	400-1 000	1
F12M-L3AM-10-5K-BR	PLMB4TYDVA68	230	347-480	5 000	32 239	140	70	7HX7V	BRONZE	YES	B5-U0-G3	0.58	>60 000	1.8	0.922	12.53	400-1 000	400-1 000	1
F12L-L4AM-2-5K-BR	PLZ780IE9CCZ	300	120-277	5 000	42 098	140	70	7HX6V	BRONZE	YES	B5-U0-G3	0.63	>60 000	2.703-1.168	0.998	5.87	400-1 000	1 000	1
F12L-L4AM-10-5K-BR	PL501W0DXJK4	283	347-480	5 000	40 845	145	70	7HX6V	BRONZE	YES	B5-U0-G3	0.63	>60 000	1.5	0.905	16.26	400-1 000	1 000	1
F12X-L5AM-2-5K-BR	PLL2CJWVD6Y	396	120-277	5 000	58 000	146	70	7HX7V	BRONZE	YES	B5-U0-G4	0.71	>60 000	3.618-1.613	0.998	2.91	1 000	1 000	1
F12X-L5AM-10-5K-BR	PLZ9NEGVM4JY	400	347-480	5 000	58 148	145	70	7HX7V	BRONZE	YES	B5-U0-G4	0.71	>60 000	2.09	0.955	7.56	1 000	1 000	1
POWER AND CCT SELECTABLE																			
F12M-PS150M-2-3CBR	PLWMB606WHS2	50/80/100/150	120-277	3 000/4 000/5 000	8 950/11 200/13 500/18 900 ¹	125	70	7HX7V	BRONZE	YES	B4-U0-G1	0.53	>54 000	1.411-0.595	0.995	5.73	175-400	150-400	1
F12X-PS300M-2-3CBR	PL9MED4H8VFJ	150/200/240/300	120-277	3 000/4 000/5 000	23 000/29 100/33 600/37 500 ¹	129	70	7HX7V	BRONZE	YES	B4-U0-G1	0.63	>54 000	2.64-1.18	0.998	4.26	400-1 000	400-1 000	1

QUICK SHIP: Product availability is subject to change without notice. Please contact your AimLite customer service representative to confirm inventory levels at time of order.

¹ Lumen values are based on 4 000 K default settings. Please refer to Technical Specification Table for more details on other color temperatures.

ORDERING GUIDE - SINGLE POWER AND SINGLE CCT

SERIES	SIZE	LAMP TYPE	LUMEN PACKAGE [W]	DISTRIBUTION TYPE	VOLTS [V]	COLOR TEMP. [K]	CASTING COLOR	OPTIONS
F12	S - SMALL	L - LED	1A - 100 2A - 150	M - MEDIUM FLOOD	2 - 120-277 10 - 347-480	4K - 4 000 5K - 5 000	BR - BRONZE (STANDARD) BK - BLACK WH - WHITE SP - SPECIAL COLOR	OSI ¹ - OCCUPANCY SENSOR PR - 3 PIN RECEPTACLE PR7 - 7 PIN RECEPTACLE
	M - MEDIUM		3A - 230					
	L - LARGE		4A - 300					
	X - EXTRA LARGE		5A - 400					

¹ Not available for any configuration in 347-480V.

ORDERING GUIDE - POWER AND CCT SELECTABLE

SERIES	SIZE	LUMEN PACKAGE [W]	DISTRIBUTION TYPE	VOLTS [V]	COLOR TEMP. [K]	CASTING COLOR	OPTIONS
F12	M - MEDIUM	PS150 - 50/80/100/150	M - MEDIUM FLOOD	2 - 120-277	3C - 3 000/ 4 000/ 5 000	BR - BRONZE (STANDARD) BK - BLACK WH - WHITE SP - SPECIAL COLOR	OSI - OCCUPANCY SENSOR PR - 3 PIN RECEPTACLE PR7 - 7 PIN RECEPTACLE
	X - EXTRA LARGE	PS300 - 150/200/240/300					

OCCUPANCY SENSORS

PART NUMBER	POSITION	VOLTS [V]	TECHNOLOGY	HEIGHT [M]	DETECTION AREA [%]	HOLD TIME [MIN]	STAND-BY DIM LEVEL [%]	DAYLIGHT MIN LEVEL	REMOTE PART NUMBER	LOCATION ² [°C]
OSI-MSE	INTERNAL	120-347	MICROWAVE	10 MAX	100%	15 MIN	50	DISABLE	OSI-TW-SCRD04 ¹	-35 TO +60

¹ To be ordered separately.

² Verify fixture temperature for compatibility with sensor.

ACCESSORIES (ORDER SEPARATELY)

PART NO	DESCRIPTION	WEIGHT (LBS)
CAS979-YOKE-S-BR	BRONZE YOKE FOR F12S-F12M	1.65
CAS979-YOKE-L-BR	BRONZE YOKE FOR F12L-F12X	2.43
CAS979-SWIVEL-BR	BRONZE SLIPFITTER	2.65
CAS979-PA6-RNDSQBR	BRONZE SQUARE/ROUND POLE ARM	1.76
CAS979-TRUNNION-BR	BRONZE TRUNNION	2.43
KITCAS979-SW-AD-BR	BRONZE SLIPFITTER AND WALL MOUNT ADAPTER	4.41
OSI-TW-SC004	OCCUPANCY SENSOR REMOTE FOR OSI-MSE	-

MADE TO ORDER ACCESSORIES (ORDER SEPARATELY) ¹

PART NO	DESCRIPTION
CAS979-YOKE-S-BK	BLACK YOKE FOR F12S-F12M
CAS979-YOKE-L-BK	BLACK YOKE FOR F12L-F12X
CAS979-SWIVEL-BK	BLACK SLIPFITTER
CAS979-PA6RNDSQ-BK	BLACK SQUARE/ROND POLE ARM
CAS979-TRUNNION-BK	BLACK TRUNNION
KITCAS979-SW-AD-BK	BLACK SLIPFITTER AND WALL/POLE ADAPTER
CAS979-YOKE-S-WH	WHITE YOKE FOR F12S-F12M
CAS979-YOKE-L-WH	WHITE YOKE FOR F12L-F12X
CAS979-SWIVEL-WH	WHITE SLIPFITTER
CAS979-PA6RNDSQ-WH	WHITE SQUARE/ROND POLE ARM
CAS979-TRUNNION-WH	WHITE TRUNNION
KITCAS979-SW-AD-WH	WHITE SLIPFITTER AND WALL/POLE ADAPTER

¹ Contact factory for special color.

TECHNICAL SPECIFICATION TABLE - POWER AND CCT SELECTABLE

PART NO	WATTS (W)	VOLTS (V)	3 000 K		4 000 K		5 000 K		CRI	DISTRIBUTION TYPE
			LUMEN (LM)	EFFICACY (LM/W)	LUMEN (LM)	EFFICACY (LM/W)	LUMEN (LM)	EFFICACY (LM/W)		
F12M-PS150M-2-3CBR	50	120-277	6 800	136	6 950	139	7 510	150	70	7HX7V
	80	120-277	11 000	138	11 200	140	11 500	144	70	7HX7V
	100	120-277	13 200	132	13 500	135	14 000	140	70	7HX7V
	150	120-277	18 700	125	18 900	126	19 200	128	70	7HX7V
F12X-PS300M-2-3CBR	150	120-277	22 400	149	23 000	153	23 800	159	70	7HX7V
	200	120-277	28 200	141	29 100	146	30 000	150	70	7HX7V
	240	120-277	32 600	136	33 600	140	34 650	144	70	7HX7V
	300	120-277	36 800	123	37 500	125	38 000	127	70	7HX7V

POWER AND CCT SELECTABLE SWITCHES

F12M-PS150M-2-3CBR



CCT SELECTABLE
3 000/4 000/5 000 K

POWER SELECTABLE
50/80/100/150 W

F12X-PS300M-2-3CBR



CCT SELECTABLE
3 000/4 000/5 000 K

POWER SELECTABLE
150/200/240/300 W