

IHC LED

- Four lumen outputs provide up to 90,000 lumens.
- Choice of four optics (Very Narrow, Narrow, Medium and Very Wide) for optimal light distribution in a variety of applications.
- Luminaire can be ordered with Chain or Bracket mounting accessories.
- Separate field wiring compartment with screw terminal block for easy and secure connection accepts up to UL/CSA 10AWG maximum.
- Four 3/4 in. NPT side entries provided with three close-up plugs. Optional M20 metric adapters available.
- Choice of color temperature (CCT): 5000K cool white, 4000K neutral white or 3000K warm white.
- Rugged housing with superior thermal design translates to long luminaire life.
- Heavy duty, high temperature silicone rubber gaskets.
- Thermal shock and impact resistant clear polycarbonate lens.
- Standard 8kV surge protection.
- Captive fasteners secure driver compartment cover.
- 0-10 Vdc Dimming capable.
- Field replaceable LED drivers.

OPTIONS

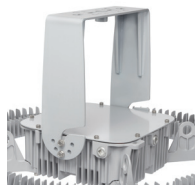
- Pre-wired version with 3 meter (10 foot) cord available.
- 10kV and 20kV Surge Protection
- Photocontrol socket available for outdoor installations.
- 2.4 meter (8 foot) safety cable, purchase separately.

Mounting Options

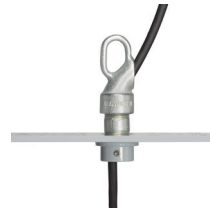
Cable



Bracket for Ceiling, Wall, and Floor



Appleton FHLM-75 Hanger Loop



U-bolt to 2-Inch Rigid Conduit



SUITABLE LOCATIONS

- Powerful, efficient weatherproof lighting for applications such as:
 - Steel Production Plants
 - Power Generation Facilities
 - Foundries
 - Cement, Stone and Sand Plants
 - Pulp and Paper Mills
 - Ship Building and Shipping Ports
 - Other areas where corrosive, wet, dirty and tough environments are a problem.
- High ceilings of 15 meters (50 feet) to greater than 30 meters (100 feet).
- IP66, Type 4X, marine and wet locations
- Locations requiring dependable, consistent lighting in extreme hot/cold temperature environments. -40 °C to +75 °C (-40 °F to +167 °F) ambient temperature range.
- Globally rated luminaires with all applicable certification labels for NEC/CEC, NOM, IEC EE CB, CE and UKCA environments. See Certifications and Compliances for details.

STANDARD MATERIALS

- Housing, LED heatsink, and driver compartment cover: copperfree (4/10 of 1% max.) aluminum
- Bracket: zinc plated steel
- Gaskets: silicone rubber
- Exterior hardware: stainless steel
- Close up plugs: aluminum
- Cable mount components: stainless steel
- Safety cable: stainless steel

STANDARD FINISHES

- Housing, LED heatsink, driver compartment cover, and bracket: baked gray epoxy powder coat finish, electrostatically applied for complete uniform protection

CERTIFICATIONS AND COMPLIANCES

- UL Standards:
 - UL1598, Luminaires
 - UL1598A, Luminaires for Installation on Marine Vessels
 - UL 8750, LED Equipment for Use in Lighting Products
 - UL 50, UL 50E, Enclosures
- CSA Standards:
 - CSA C22.2 No. 250.0, Luminaires
 - CSA C22.2 No. 250.13, LED Equipment for Use in Lighting Products
 - CSA C22.2 No. 94.1, CSA C22.2 No. 94.2, Enclosures
- cULus Certificate: E479986
- IEC EE CB Certificates and Compliances:
 - IEC 60529, IEC 60598-1, IEC 60598-2-1, and IEC 60598-2-5
 - IEC EE CB Certificates: pending
- CE and UKCA Marking:
 - Safety: EN 60598-1, EN 60598-2-1, and EN 60598-2-5
 - EMC: IEC 61547, 61000-6-2, 61000-6-4, 61000-3-2; CISPR 15
- NOM: Norma Oficial Mexicana:
 - NMX-J-307
 - NOM Certificate: pending

DESIGNLIGHTS™ CONSORTIUM

- Models pending

APPLETON™

For product information:
www.masteringled.com
 1.800.621.1506

EMERSON™

CONSIDER IT SOLVED™

Product Ordering Guide | IHC LED

IHC
Series:
IHC LED Series

Mounting:
N - No Mount
C - Cable
B - Bracket

Lumen Level:
5 - 50,000
6 - 60,000
7 - 75,000
9 - 90,000

B
Hub Size:
2 - 3/4 in. NPT
Threaded Entry
0 - M20 Metric
Adapter

Color Temperature (CCT):
C - 5000K
N - 4000K
W - 3000K

Lens Material:
P - Clear
Polycarbonate

N
Light Distribution Pattern:
V - Very Narrow
N - Narrow
M - Medium
W - Very Wide
(Non-optic)

Voltage:
BU - 120-277 Vac
50/60 Hz,
125-300 Vdc
BH - 277-480 Vac
50/60 Hz

Color:
G - Appleton Gray
(Standard)

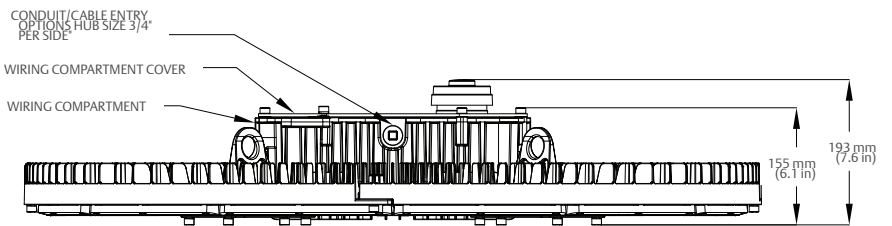
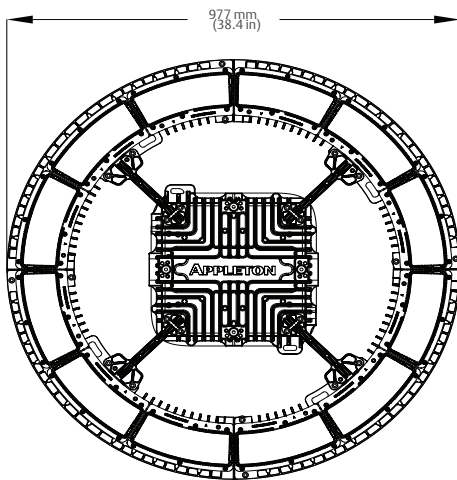
S
Surge Protection Options:
Blank - 8 kV
Standard
1 - 10kV
2 - 20kV

Pre-Wired Options:
Blank - No Pre-Wired
Options
P - 10 Ft. Cord; Power
and Dimming
D - 10 Ft. Cord; Power
and Dimming

Control Options:
Blank - No Controls
5 - 5 Pin NEMA Socket

	IHC_5	IHC_6	IHC_7	IHC_9
Input Power at 480 Vac	356 Watt	407 Watt	534 Watt	617 Watt
Voltage Range	BU	120-277 Vac, 50/60 Hz, 125-300 VDC		
	BH	277-480 Vac 50/60 Hz		
Luminous Flux (Efficacy)* for 5000K Clear	Very Narrow	51,100	61,200	75,900
	Narrow	50,800	60,900	75,600
	Medium	50,900	61,000	75,500
	Very Wide	45,850	55,400	68,800
Correlated Color Temperature (CCT)	3000K/4000K/5000K			
Color Rendering Index (CRI)	80/80/70			
Ambient Temperature (NEC/CEC)	-40 °C (-40 °F) to +75 °C (+167 °F)	-40 °C (-40 °F) to +70 °C (+158 °F)	-40 °C (-40 °F) to +70 °C (+158 °F)	-40 °C (-40 °F) to +65 °C (+149 °F)
Standard Materials	Housing: copperfree aluminum			
	Finish: baked gray epoxy powder coat finish			
	Lens: thermal shock- and impact-resistant clear polycarbonate			
Lifetime	>100,000 hours @ +40°C (+104°F) ambient temperature; >60,000 hours @ +65°C (+149°F) ambient temperature			
Warranty	10 years standard			

① All values typical +/-10%



APPLETON
For product information:
www.masteringled.com
1.800.621.1506

