

Dual Incandescent Dimmer/Switch MA-L3S25

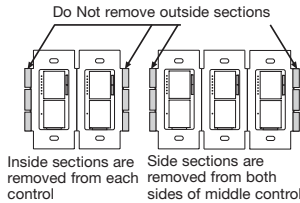
Rated at 120 V~ 60 Hz 300 W Incandescent load and 2.5 A Switch load
 Note: This control is rated for fan and lighting loads only.

Important Notes - Please read before installing.

- Only use dimmer with permanently installed incandescent or 120 V~ halogen fixtures. To avoid overheating and possible damage to other equipment, do not use to control receptacles, fluorescent lighting fixtures, low-voltage lighting fixtures, motor-driven appliances, or transformer-supplied appliances.
- Use switch to control any permanently installed lighting or fan load. Check power requirements for all attached heating devices as they may exceed the power limits shown in the capacity chart.
- Install in accordance with all national and local electrical codes.
- DO NOT** install compact fluorescent (Energy Saver) lamps in the dimmer circuit. These lamps may only be installed in the switch circuit.
- Dimmer and switch require separate wires in the wallbox for each load.
- Do not use for loads operated from two or more locations (3-way or 4-way).
- When no "grounding means" exist within the wallbox then the NEC® 2008, Article 404.9 allows a control without a grounding connection to be installed as a replacement, as long as a plastic, noncombustible wallplate is used. For this type of installation, cap or remove the green ground wire on the control and use an appropriate wallplate such as Claro® or Satin Colors® series wallplates by Lutron®.
- For new installations, install a test switch before installing the control.
- Protect control from dust and dirt when painting or spackling.
- Unit will not operate with less than 40 W of load installed on dimmer.
- It is normal for the control to feel warm to the touch during operation.
- Clean control with a *soft damp cloth only*. Do not use any chemical cleaners.
- Operate between 32 °F (0 °C) and 104 °F (40 °C)
- Recommended wallbox depth is 2.5 in (64 mm) minimum.

Multigang Installation

When combining controls in a wallbox, remove all inner side sections before wiring (see below). Use pliers to bend each side section up and down until it breaks off. Repeat for each side section to be removed. Reduction of control capacity is also required. Refer to chart below for maximum capacity.



Dimmer/Switch Capacity Chart

Channel	Load	No Sides Removed	1 Side Removed	2 Sides Removed
Dimmer	Incandescent 120 V~ Halogen	300 W	250 W	200 W
	General Purpose Fan	2.5 A	2.0 A	1.5 A
Switch	Incandescent 120 V~ Halogen	300 W	250 W	200 W
	Low-Voltage Fluorescent			

The Switched Channel is UL® listed for use with all magnetic fluorescent ballasts and with select electronic fluorescent ballasts. Please call the Lutron Technical Support Center at 1.800.523.9466 for an up to date listing.

Technical Assistance

If you have questions concerning the installation or operation of this product, call the Lutron Technical Support Center. Please provide exact model number when calling.

U.S.A. and Canada (24 hrs/7days) 1.800.523.9466
Other countries (8am - 8pm ET) http://www.lutron.com +1.610.282.3800

Limited Warranty

(Valid only in U.S.A., Canada, Puerto Rico, and the Caribbean.)

Lutron will, at its option, repair or replace any unit that is defective in materials or manufacture within one year after purchase. For warranty service, return unit to place of purchase or mail to Lutron at 7200 Suter Rd., Coopersburg, PA 18036-1299, postage pre-paid. THIS WARRANTY IS IN LIEU OF ALL OTHER EXPRESS WARRANTIES, AND THE IMPLIED WARRANTY OF MERCHANTABILITY IS LIMITED TO ONE YEAR FROM PURCHASE. THIS WARRANTY DOES NOT COVER THE COST OF INSTALLATION, REMOVAL OR REINSTALLATION, OR DAMAGE RESULTING FROM MISUSE, ABUSE, OR DAMAGE FROM IMPROPER WIRING OR INSTALLATION. THIS WARRANTY DOES NOT COVER INCIDENTAL OR CONSEQUENTIAL DAMAGES. LUTRON'S LIABILITY ON ANY CLAIM FOR DAMAGES ARISING OUT OF OR IN CONNECTION WITH THE MANUFACTURE, SALE, INSTALLATION, DELIVERY, OR USE OF THE UNIT SHALL NEVER EXCEED THE PURCHASE PRICE OF THE UNIT.

This warranty gives you specific legal rights, and you may have other rights which vary from state to state. Some states do not allow the exclusion or limitation of incidental or consequential damages, or limitation on how long an implied warranty may last, so the above limitations may not apply to you. Lutron, Claro, and Maestro are registered trademarks, and FASS is a trademark of Lutron Electronics Co., Inc. NEC is a registered trademark of National Fire Protection Association, Quincy, Massachusetts. UL is a registered trademark of Underwriters Laboratories Inc. © 2010 Lutron Electronics Co., Inc.



030-1409

- Easy-to-follow Instructions
- Instrucciones Fáciles de Seguir

LUTRON®
 Lutron Electronics Co., Inc.
 7200 Suter Road
 Coopersburg, PA 18036-1299, U.S.A.
 Made and printed in U.S.A.
 11/10 P/N 030-1409 Rev. A

Installation

For installations involving more than one control in a wallbox, refer to Multigang Installation before beginning.
Separate wires are required in the wallbox for each circuit.

1 Turning Power OFF.

- Turn power OFF at circuit breaker (or remove fuse).

WARNING: Before proceeding, verify that power to the switch is OFF. Otherwise, death or serious injury could result.



For new construction go to step 5.

2 Removing Wallplate and Switch.

- Remove the wallplate and switch mounting screws.
- Carefully remove switch from wall (do not remove wires).



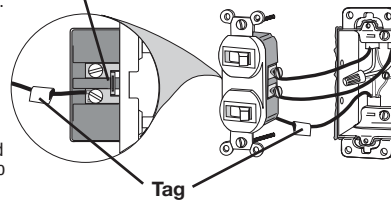
3 Verifying Application.

- This control controls two loads independently. Independent wires must be provided for each load.

- Tag the wire that is connected to the feed side of the switch (the side with the breakoff fin).

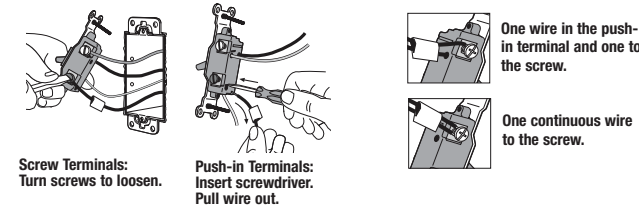
Identify Side with Break-off fin

- If connecting a fan, fluorescent, low-voltage or other non-incandescent/halogen load, note which switch and corresponding screw terminal controls it and mark this wire to be installed on the switched channel in step 5. Failure to do so may damage the load and control.



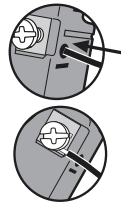
4 Disconnecting Switch Wires.

Important Note: Your wall switch may have two wires attached to the same screw (see illustrations below for examples). Tape these two wires together before disconnecting. When wiring, connect wires to the Control the same way they were connected to the switch.



Important Wiring Information

Trim or strip wallbox wires to the length indicated by the strip gauge on the back of the control.



Push-in Terminals: Insert wires fully.
 Note: Push-in terminals are for use with 14 AWG (1.5 mm²) solid copper wire only. DO NOT use stranded or twisted wire.

OR

Screw Terminals: Tighten securely.
 Screw terminals are for use with 14 AWG (2.5 mm²) or 14 AWG (1.5 mm²) solid copper wire only. DO NOT use stranded or twisted wire.

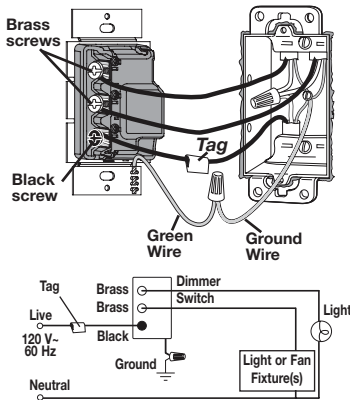
Wire Connector:

Use to join one 14 AWG (1.5 mm²) or 12 AWG (2.5 mm²) ground wire with one 18 AWG (0.75 mm²) control ground wire.



Twist wire connector tight.

5 Wiring the Control.



- Connect the tagged wire removed from the feed side of the switch to the **black** screw terminal on the Control labeled **Live**.
- Connect one of the remaining wires controlling an incandescent/halogen load to the **top brass** terminal labeled **Dimmer**.
- Connect the remaining wire removed from the switch to the remaining **brass** screw terminal on the Control labeled **Switch**.
- Use wire connectors to connect the **green** ground wire on the Control to the **bare copper** or **green** ground wire in the wallbox, and to cap any unused wires. See wire connector bag for installation instructions.

6 Mounting Control(s) to Wallbox.

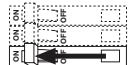
- Form wires carefully into wallbox, mount and align control(s).
- Install the wallplate(s).

Note: Do not overtighten mounting screws.



7 Turning Power ON.

- Turn power ON at circuit breaker (or replace fuse).



To verify the control is correctly wired, test to make sure that the dimmer and switch are working properly on the correct load. If any unexpected behavior occurs, check the troubleshooting guide.

Operation

Light Level Tap Button

- Tap once when lights are off - Lights brighten smoothly to preset intensity.
- Tap once when lights are on - Lights dim smoothly to off.
- Tap twice quickly - Lights brighten rapidly to full intensity.
- Press and hold when unit is on - Activates delayed fade to off mode. As the tap button is held, the LEDs will begin to flash. The first flashing LED represents a 10 second fade to OFF. Each additional flashing LED represents an additional 10 seconds of delay before lights fade OFF (up to 60 seconds delay).

Light Level LEDs

- Indicates approximate light level.

LEDs may not change with each press.
 Press to increase light level
 Press to decrease light level

Switch Tap Button

- Tap once when unit is OFF - Controlled load turns ON.
- Tap once when unit is ON - Controlled load turns OFF.
- LED - Glows brightly when the load is ON or glows softly as a night light when load is OFF.

FASS™ - Front Accessible Service Switch

Important Note: To replace a bulb, remove power by pulling the FASS switch out on the Dimmer/Switch. For any procedure other than routine bulb replacement, power must be disconnected at the main electrical panel.

Troubleshooting

Symptoms	Possible Causes
Light does not work or no LEDs turn on.	<ul style="list-style-type: none"> • Light bulbs burned out. • Breaker is off or tripped. • Dimmed Channel not connected to load. • Front Accessible Service Switch (FASS) on Control is pulled out to the OFF position.
Top and bottom buttons control wrong loads.	<ul style="list-style-type: none"> • Wires going to the two brass screws are reversed.
Dimmer and Switch behave erratically.	<ul style="list-style-type: none"> • Live wire is connected to the dimmer screw. Fix wiring error to ensure FASS removes power to both loads.
Tap button does not work at brightest level.	<ul style="list-style-type: none"> • Load is less than 40 W.

