

Series Spec Sheet

PRESTO

LED PRESTO DOWNLIGHT

4" & 6" all-in-one LED downlight

Presto LED downlight is an all-in-one product that will fit seamlessly into all residential lighting applications. The base model is complete with a white baffle finish, but this line also offers trims made of stamped metal that will enhance the look of the luminaire, creating a sophisticated look tailored to your decor.

FEATURES AND SPECIFICATIONS

• Construction

Finishing

- Finish White
- Optional trim accessory finish White, Bronze, Silver and Black
- Round, 4" and 6"

Mounting

- Quick installation with LED driver mounted directly onto the lighting module
- Torsion spring mounting clips

• Technical specifications

- Phase cut dimming (TRIAC/ELV)
- Color temperature 2 700, 3 000 and 4 000 K
- Ambient temperature: -20°C to 40°C

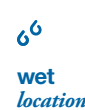
• Compliances

- cULus listed
- IC rated for direct contact with insulation
- Air tight per ASTM E283-04



OVERVIEW

Light source	LED
Watts (W)	7, 9
Lumen output (lm)	590 - 835
Efficiency (lm/W)	84 - 93
Color temperature (K)	2 700, 3 000, 4 000
CRI	80+



QUICK SHIP AND TECHNICAL SPECIFICATION TABLE ☎️¹

Order code	Part number	Watts (W)	Volts (VAC)	Color temp. (K) ²	Lumen output (lm) ³	Efficiency (lm/W)	CRI	Life L70 (hrs) ⁴	Beam angle (°)	Finish	Power factor	THD (%)	Traditional equivalent (W)	Case qty (master)
4" Round														
64326	LED/PRESTO/DL4ID/7W/27K/STD	7	120	2 700	590	84	80+	40 000	107	White	>0.9	<30	50	6
64327	LED/PRESTO/DL4ID/7W/30K/STD	7	120	3 000	630	90	80+	40 000	108	White	>0.9	<30	50	6
64328	LED/PRESTO/DL4ID/7W/40K/STD	7	120	4 000	638	91	80+	40 000	108	White	>0.9	<30	50	6
6" Round														
64329	LED/PRESTO/DL6ID/9W/30K/STD	9	120	3 000	805	89	80+	40 000	108	White	>0.9	<30	65	6
64330	LED/PRESTO/DL6ID/9W/40K/STD	9	120	4 000	835	93	80+	40 000	108	White	>0.9	<30	65	6

¹ **QUICK SHIP:** Product availability is subject to change without notice. Please contact your Stanpro customer service representative to confirm inventory levels at time of order.

² Typical color temperature range: +/- 5 %.

³ Lumen values are derived from photometric testing. Initial lumens range: +/- 10 %.

⁴ Life hours are derived from IESNA LM-80-08 testing report and projected per IESNA TM-21-11 extrapolations.

QUICK SHIP AND TECHNICAL SPECIFICATION TABLE TRIMS ☎️¹

Order code	Part number	Finish	Type	Case qty (master)
4" Round				
64339	LED/PRESTO/ACC.TRIMS/DL4ID/WHT/STD	White	Smooth	120
64341	LED/PRESTO/ACC.TRIMS/DL4ID/SLV/STD	Silver	Smooth	120
64342	LED/PRESTO/ACC.TRIMS/DL4ID/BRZ/STD	Bronze	Smooth	120
6" Round				
64343	LED/PRESTO/ACC.TRIMS/DL6ID/WHT/STD	White	Smooth	120
64346	LED/PRESTO/ACC.TRIMS/DL6ID/BLK/STD	Black	Smooth	120
64347	LED/PRESTO/ACC.TRIMS/DL6ID/SLV/STD	Silver	Smooth	120



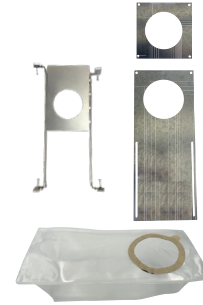
¹ **QUICK SHIP:** Product availability is subject to change without notice. Please contact your Stanpro customer service representative to confirm inventory levels at time of order.

Data is based upon tests performed in a controlled environment. Actual performance can vary depending on operating conditions. All products are subject to change or may be discontinued any time without notice.

ACCESSORIES (order separately)¹

Part number	Part number	Type	Opening diameter (in.)	Case qty (master)
66051	ACC/MPLATE/4.25/SQR/STD	Square mounting plate	4 1/4	100
66058	ACC/MPLATE/4.25/ADJ/STD	Adjustable mounting plate	4 1/4	50
66821	ACC/MPLATE/4.25IN/HANG.BARS/STD	Mounting plate with hanger bars	4 1/4	25
66143	ACC/4/VAPOR BARRIER/STD	Vapor barrier extender	4 1/4	50
66822	ACC/MPLATE/6.25IN/HANG.BARS/STD	Mounting plate with hanger bars	6 1/4	2
64263	ACC/MPLATE/6.25IN/SQR/STD	Square mounting plate	6 1/4	96
64921	RF/ACC/6/MOUNT.PLATE/ADJ/STD	Adjustable mounting plate	6 1/4	24
66144	ACC/6/VAPOR BARRIER/STD	Vapor barrier extender	4 7/32	50

¹Includes brackets and screws.

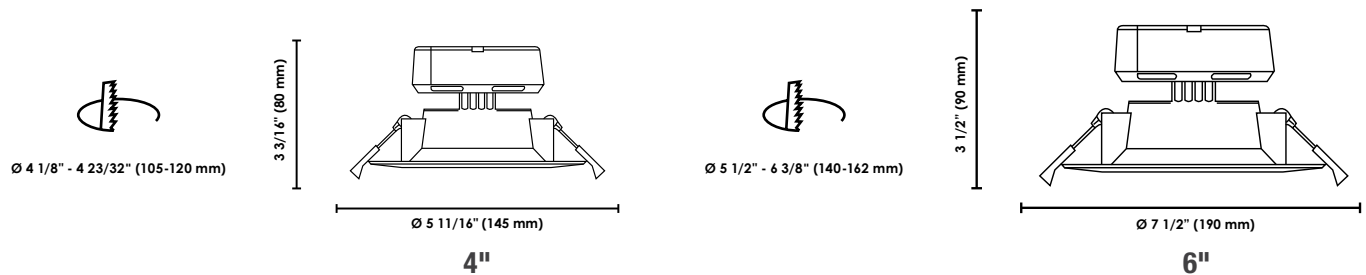


COMPATIBLE DIMMERS

Brand	Model number
Leviton	IPE04-1LZ
Lutron	DVCL-153P, AYCL-253P, DVCL-253P

NOTE: The above table shows dimmers that have been tested and have demonstrated proper operation under normal conditions. Each installation being unique, various factors such as load, common neutrals or other electrical products on the circuit can, in certain instances, cause variance in system performance. Read and comply to the dimmer installation instructions. Consult dimming system manufacturer for additional support in operation. Standard recommends to use dimmers designed to work with LED products. Older dimmers designed for incandescent products may cause erratic operation. Some dimmers may require more than one product for stable operation. The maximum number of products is determined by the dimmer wattage rating with LEDs. Be careful, these dimmers have different ratings depending on the product type. Again, refer to the dimmer installation instructions.

DIMENSIONS

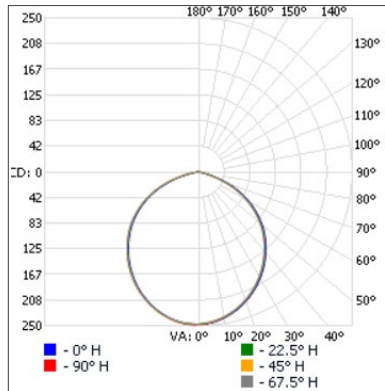


Data is based upon tests performed in a controlled environment. Actual performance can vary depending on operating conditions. All products are subject to change or may be discontinued any time without notice.

PHOTOMETRIC DATA¹

64328 • LED/PRESTO/DL4ID/7W/40K/STD • 638.2 lm

Polar candela distribution



Zonal lumen summary

Zone	Lumens	% Fixture
0-30	188.9	29.6%
0-40	307.0	48.1%
0-60	535.0	83.8%
60-90	103.2	16.2%
70-100	29.4	4.6%
90-120	0.0	0%
0-90	638.2	100%
90-180	0.0	0%
0-180	638.2	100%

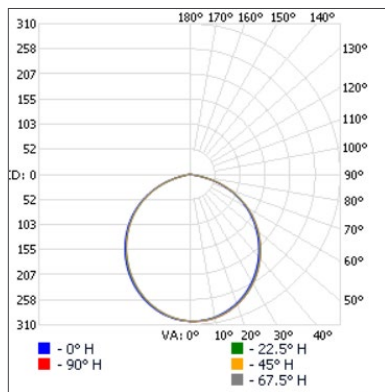
Illuminance at a distance

	Center beam fc	Beam width
17'	0.86 fc	46.8' 46.9'
34'	0.21 fc	93.5' 93.7'
51'	0.10 fc	140.3' 140.6'
68'	0.05 fc	187.1' 187.4'
85'	0.03 fc	233.9' 234.3'
102'	0.02 fc	280.6' 281.2'

■ Vert. spread: 108.0°
■ Horiz. spread: 108.1°

64329 • LED/PRESTO/DL6ID/9W/30K/STD • 806.5 lm

Polar candela distribution



Zonal lumen summary

Zone	Lumens	% Fixture
0-30	231.9	28.8%
0-40	377.4	46.8%
0-60	660.1	81.8%
60-90	146.4	18.2%
70-100	48.6	6%
90-120	0.0	0%
0-90	806.5	100%
90-180	0.0	0%
0-180	806.5	100%

Illuminance at a distance

	Center beam fc	Beam width
17'	1.05 fc	48.0' 47.9'
34'	0.26 fc	95.9' 95.7'
51'	0.12 fc	143.9' 143.6'
68'	0.07 fc	191.8' 191.5'
85'	0.04 fc	239.8' 239.4'
102'	0.03 fc	287.7' 287.2'

■ Vert. spread: 109.3°
■ Horiz. spread: 109.2°

¹ Complete IES files available on our website.

Data is based upon tests performed in a controlled environment. Actual performance can vary depending on operating conditions. All products are subject to change or may be discontinued any time without notice.