

SFE/SFEX/SFECM | THE FURNACE

MODULATING ELECTRIC FURNACES WITH ELECTRONIC CONTROLS



THE FURNACE

THE ALL-INCLUSIVE FURNACE

At last, Stelpro has designed an electric furnace that meets all your expectations. Our The furnace products are the only ones on the market that come equipped with a built-in temperature sensor, making installation much easier. You can say goodbye to undesirable variances in temperature thanks to their state-of-the-art electronic controls! Moreover, a new model, the SFEX, has been added to our product line. Powered by an ECM motor, it meets all performance requirements and provides additional energy savings. Simply choose the model that best suits your needs!

NEW ELECTRONIC BOARD PROGRAMMING

COMPATIBLE WITH HEAT PUMP INSTALLATIONS

BUILT-IN TEMPERATURE SENSOR

MAINTAINS MINIMUM HEATED AIR AT ALL TIMES

STATE-OF-THE-ART ELECTRONIC CONTROLS

ECO MODE FOR INCREASED SAVINGS

ECM MOTOR

GUARANTEES SAVINGS, CONSTANT AIRFLOW AND GREATER EFFICIENCY (SFECM MODEL)

1 HP MOTOR AVAILABLE

STARTING FROM 20 KW

PRE-DRILLED PANELS

SIMPLIFY INSTALLATION AND CONNECTION

FINISH

- powder coat (charcoal)

MANUFACTURING

- robust galvanized steel cabinet
- easy access to electronic board to adjust the various potentiometers
- 20 in. x 20 in. x 1 in. air filter opening (filter not included)
- circuits composed exclusively of reliable relays

ELEMENTS

- modulating elements for increased comfort and separately framed allowing for quick and easy replacement

MOTOR

- totally enclosed, permanently lubricated motor
- ECM – preset motor speed (SFEX model)
- ECM – variable motor speed (SFECM model)

CONTROL

- electronic board that compensates when heat pump is in defrost mode
- easy-to-use modes
- continuous ventilation button (low or high speed)
- continuous heating button (min or max)
- simplified connection system
- mechanical relays allowing for easy and low-cost maintenance

INSTALLATION

- three possible installation positions: upflow, downflow or horizontal
- installation directly against a wall ("zero inch" clearance)
- three conductor installation possible

WARRANTY

- five years

°STELPRO

Stelpro reserves the right to modify descriptions, manufacturing specifications or prices without prior notice. No returns accepted on optional-colour products. For all the latest models and prices, please refer to our website at www.stelpro.com.



TECHNICAL SPECIFICATIONS

PRODUCT	POWER AND VOLTAGE		AMPERAGE	MOTOR POWER	WEIGHT		PRICE
	CODE	KILOWATTS	VOLTS	AMPERES	HP	KG	
SFE SERIES (Models available in Quebec only)							
SFE1021	10/7.5	240/208	44/38	1/3	45	100	1666,00
SFE1521	15/11.2	240/208	65/56	1/3	45	100	1748,00
SFE1821	17.5/13.2	240/208	75/66	1/3	45	100	1782,00
SFE2021	20/15	240/208	85/74	1/3	45	100	1782,00
SFE2321	22.5/16.9	240/208	96/84	1/3	45	100	1862,00
SFE2721	27.5/20.7	240/208	119/104	1	48	105	2449,00
SFE3021	30/22.5	240/208	130/113	1	48	105	2516,00
SFE20211HP	20/15	240/208	88/77	1	48	105	2103,00
SFE23211HP	22.5/16.9	240/208	99/87	1	48	105	2180,00
SFEX SERIES							
SFEX1021	10/7.5	240/208	44/38	1/3	45	100	2113,00
SFEX1521	15/11.2	240/208	65/56	1/3	45	100	2184,00
SFEX1821	17.5/13.2	240/208	75/66	1/3	45	100	2231,00
SFEX2021	20/15	240/208	85/74	1/3	45	100	2244,00
SFEX2321	22.5/16.9	240/208	96/84	1/3	45	100	2322,00
SFEX2721	27.5/20.7	240/208	119/104	1	52	115	2771,00
SFEX3021	30/22.5	240/208	130/113	1	52	115	2831,00
SFEX20211HP	20/15	240/208	88/77	1	52	115	2563,00
SFEX23211HP	22.5/16.9	240/208	99/87	1	52	115	2641,00
SFECM SERIES							
SFECM1021	10/7.5	240/208	44/38	1/2	45	100	2488,00
SFECM1521	15/11.2	240/208	65/56	1/2	45	100	2641,00
SFECM1821	17.5/13.2	240/208	75/66	1/2	45	100	2704,00
SFECM2021	20/15	240/208	85/74	1/2	45	100	2737,00
SFECM2321	22.5/16.9	240/208	96/84	1/2	45	100	2888,00
SFECM2721	27.5/20.7	240/208	119/104	1	48	105	3477,00
SFECM3021	30/22.5	240/208	130/113	1	48	105	3574,00
SFECM20211HP	20/15	240/208	88/77	1	48	105	3226,00
SFECM23211HP	22.5/16.9	240/208	99/87	1	48	105	3380,00

See user guide for all technical specifications.

ACCESSORIES

PRODUCT	DESCRIPTION	PRICE
FSB2	SFE furnace downflow adaptor	176,00
SCOND	neutral terminal for third conductor	54,00

SFECM SERIES

ECM MOTOR – ELECTRONICALLY COMMUTATED MOTOR

COMFORT, EFFICIENCY, RELIABILITY AND SECURITY ARE AT THE HEART OF THE ECM

COMFORT

Comfort level can be increased if a variable speed motor is installed. This level cannot be reached with any other method. It also allows the user to select the low speed with the desired airflow in recirculation.

EFFICIENCY

Since it combines electronic circuits and a BLDC motor, it is the most efficient motor on the HVAC market. It can reach up to twice the capacity of a PSC motor.

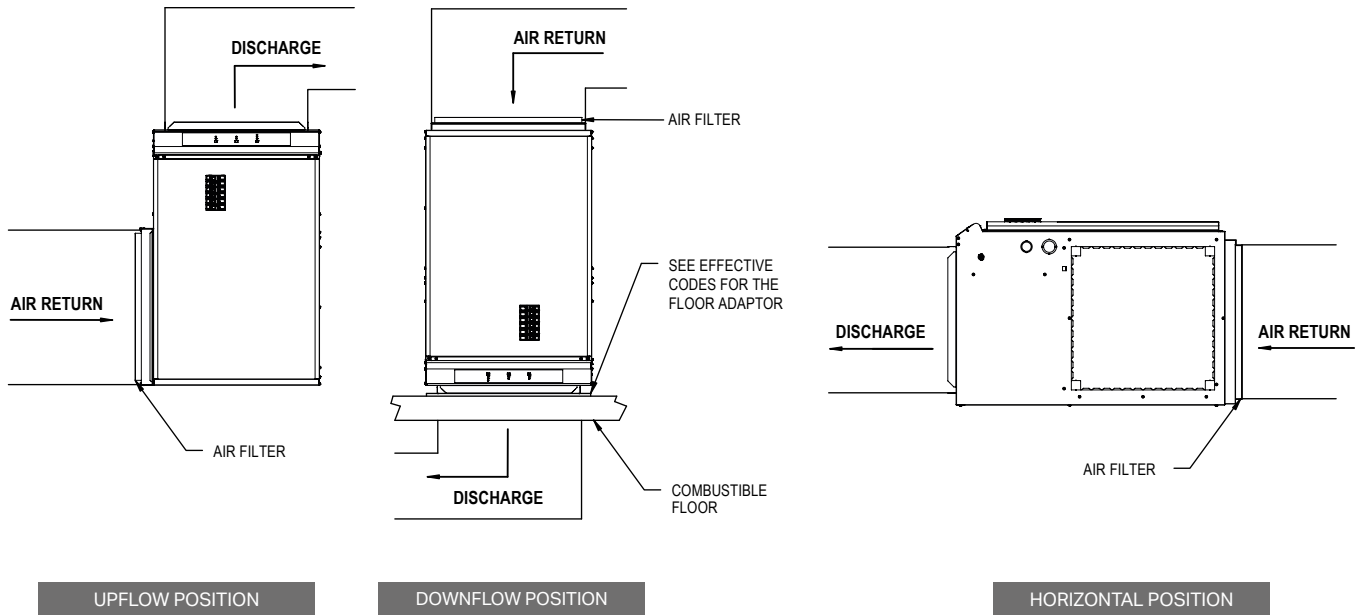
RELIABILITY

All its electronic circuits are protected against condensation. Thanks to its design and materials, such as silicone elastomer, it is one of the most reliable motors on the market.

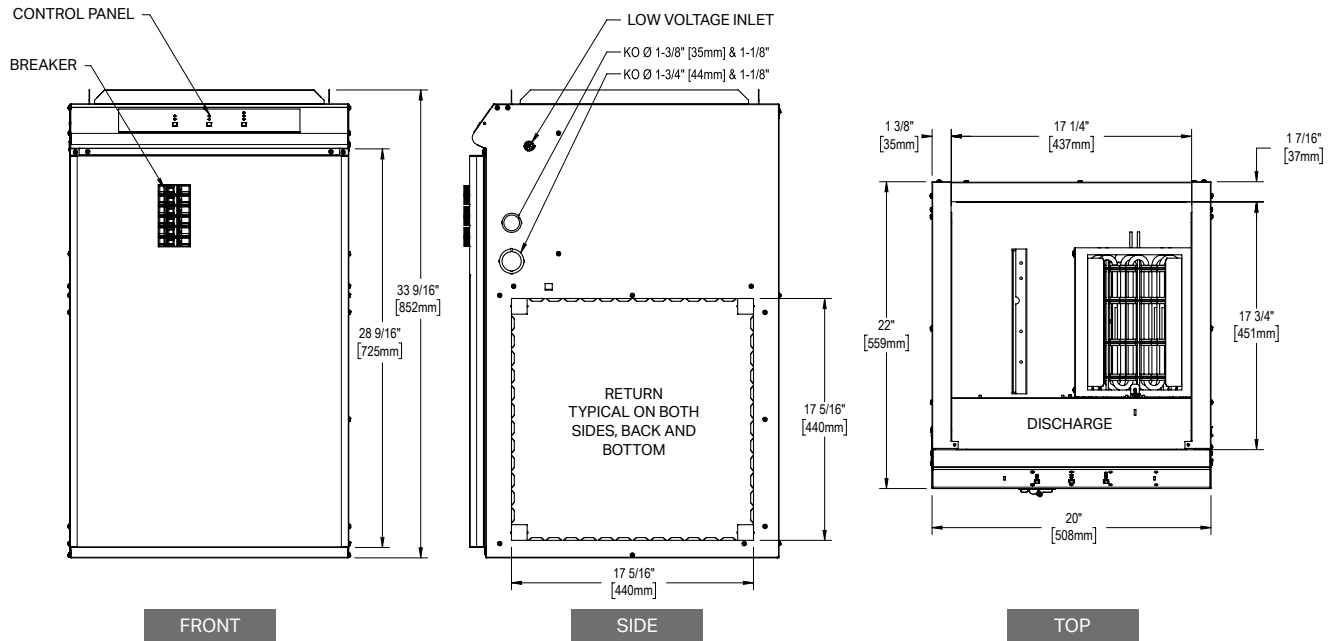
SECURITY

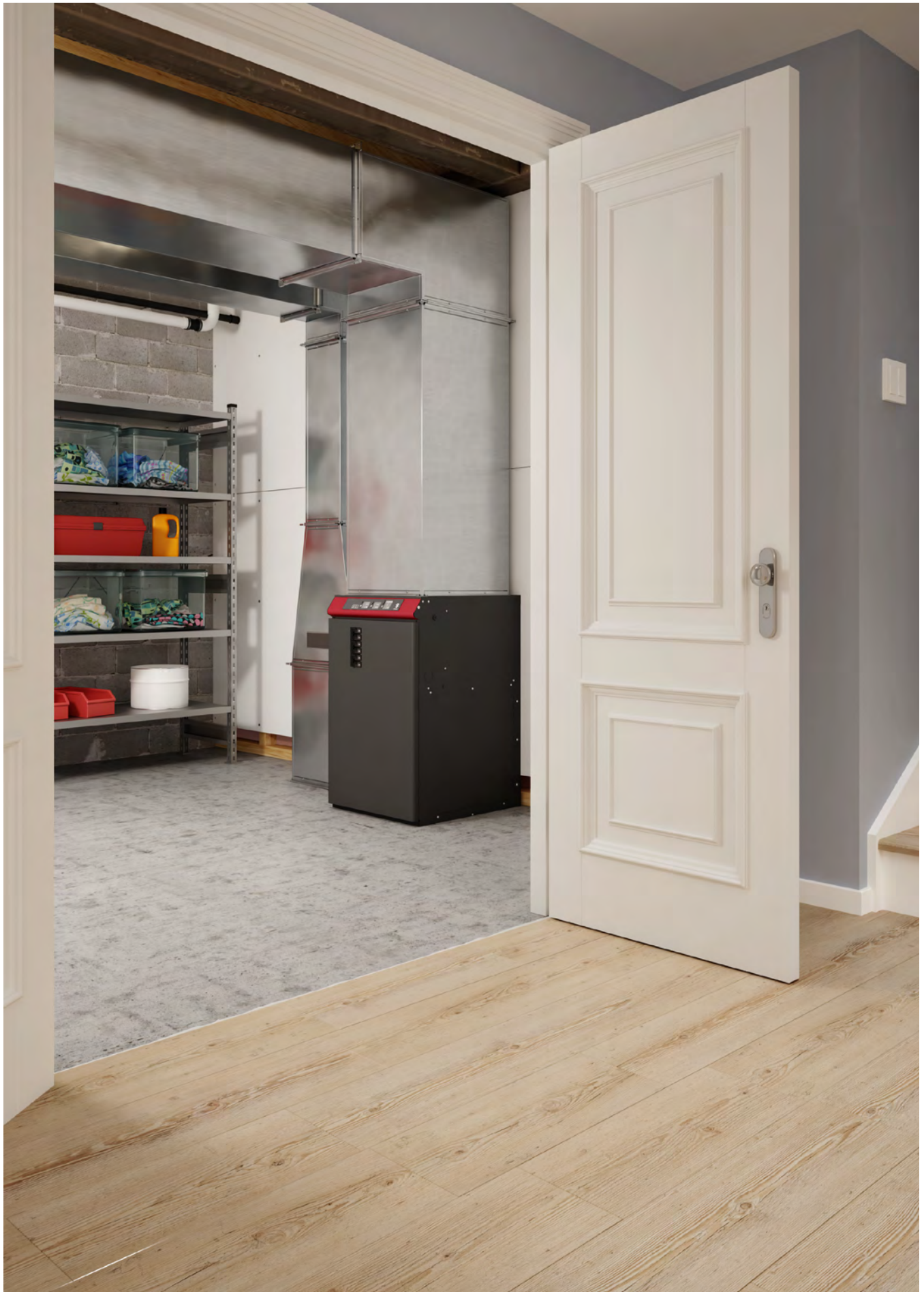
Its electronic system is protected by MOVs (metal oxide varistors) against lightning overvoltages.

INSTALLATION



TECHNICAL DRAWINGS





Stelpro reserves the right to modify descriptions, manufacturing specifications or prices without prior notice. No returns accepted on optional-colour products. For all the latest models and prices, please refer to our website at www.stelpro.com.