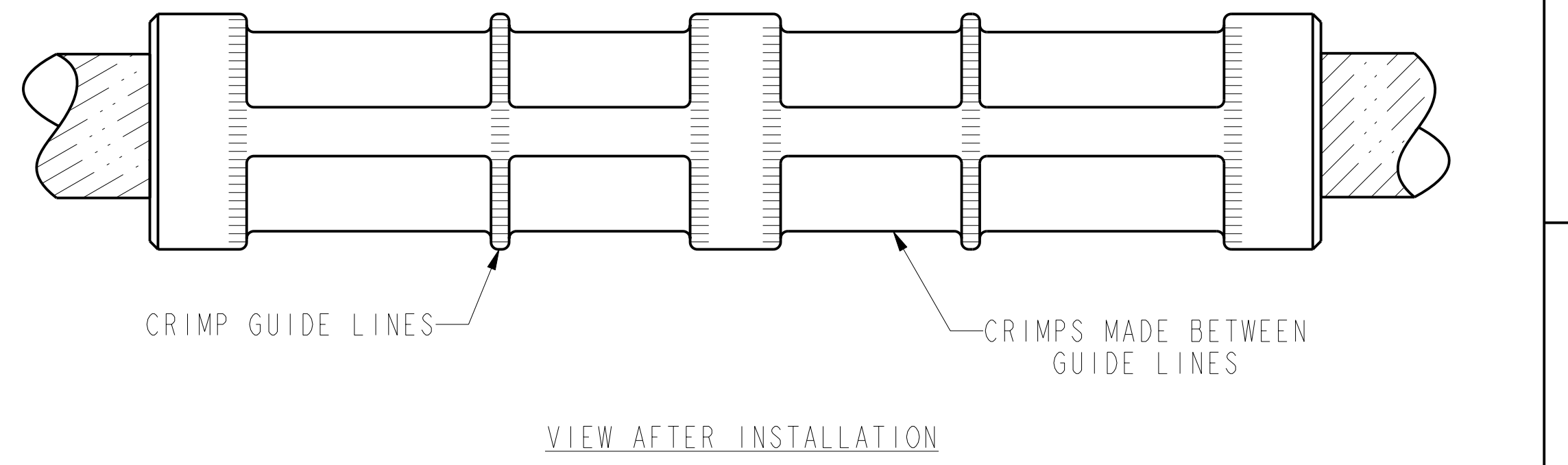
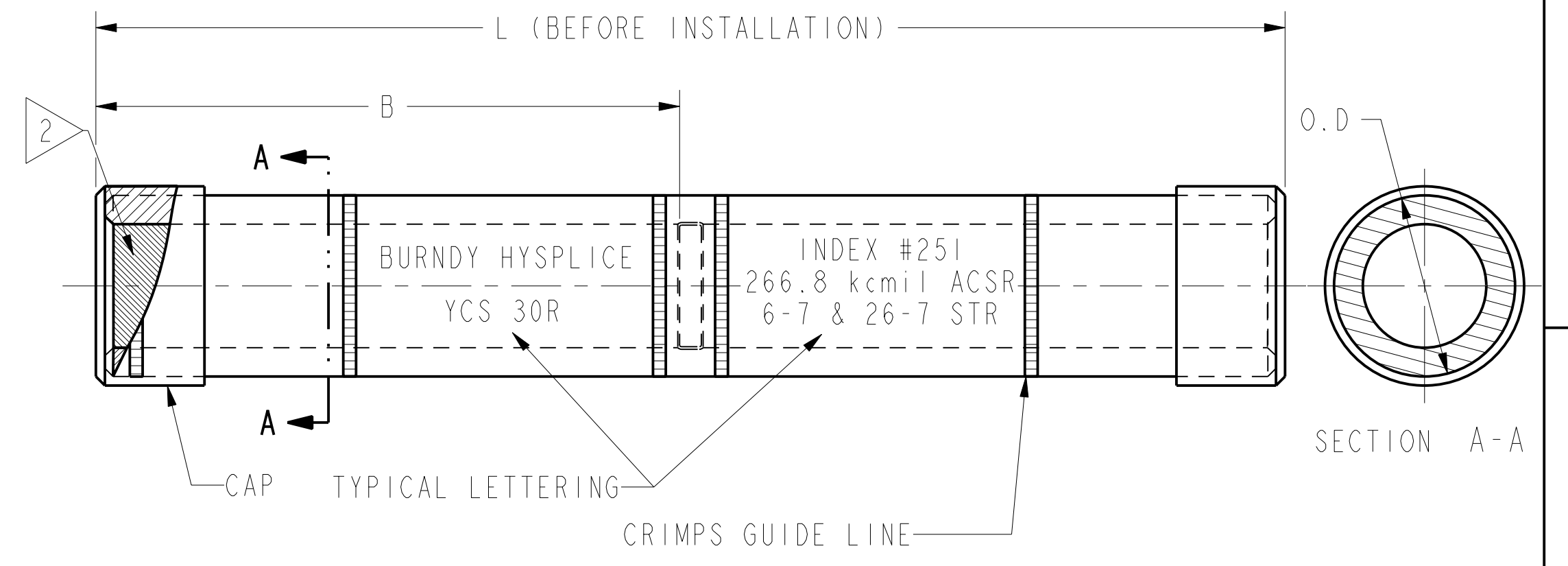


| CATALOG NUMBER | CONDUCTOR SEE LAST COLUMN |      | O.D.  | B APPROXIMATE | L APPROXIMATE | TOOLS, DIE SET CATLOG NUMBER & (CRIMPS PER END) |           |         |         |         |         | INSTALLATION TOOL INDEX NUMBER | ALSO ACCOMMODATES  |                    |                           |     |             |
|----------------|---------------------------|------|-------|---------------|---------------|---|-----------|---------|---------|---------|---------|--------------------------------|--------------------|--------------------|---------------------------|-----|-------------|
|                | ACSR                      | STR  |       |               |               | MD7, MD6  | Y35, Y750 | Y45     | Y46     | Y48B    | Y60BHU  |                                | ALUMINUM           | STR.               | METRIC (mm <sup>2</sup> ) |     |             |
| YCS4R          | #4 (.250)                 | 6-1  | 0.397 | 2.38          | 4.91          | W237(4)   | U237(2)   | U237(2) | U237(2) | --      | --      | 237                            | 4(.232)            | 5                  | 7                         |     |             |
|                | #4 (.257)                 | 7-1  |       |               |               |   |           |         |         |         |         |                                |                    |                    |                           |     |             |
| YCS2R          | #2 (.316)                 | 6-1  | 0.500 | 2.38          | 4.91          | W239(4)   | U239(2)   | U239(2) | U239(2) | --      | --      | 239                            | 2(.292)            | 5                  | 7                         | 34  |             |
|                | #2 (.325)                 | 7-1  |       |               |               |   |           |         |         |         |         |                                |                    |                    |                           |     |             |
| YCS1R          | #1 (.355)                 | 6-1  | 0.563 | 3.12          | 6.37          | W241(8)   | U241(4)   | U241(4) | U241(4) | --      | --      | 241                            | --                 | --                 | --                        | --  |             |
| YCS25R         | 1/0 (.398)                | 6-1  | 0.621 | 3.48          | 7.09          | W-BG(5)   | U-BG(6)   | U-BG(6) | U-BG(6) | --      | --      | 243                            | 1/0 (.368)         | 7                  | 19                        | 50  |             |
|                |                           |      |       |               |               | W243(7)   | U243(4)   | U243(4) | U243(4) |         |         |                                |                    |                    |                           |     |             |
| YCS26R         | 2/0 (.447)                | 6-1  | 0.696 | 3.55          | 7.05          | W245(8)   | U245(4)   | U245(4) | U245(4) | --      | --      | 245                            | 2/0 (.414)         | 7                  | 19                        | 77  |             |
|                |                           |      |       |               |               |   |           |         |         |         |         |                                |                    |                    |                           |     |             |
| YCS27R         | 3/0 (.502)                | 6-1  | 0.781 | 2.81          | 5.75          | W247(6)   | U247(3)   | U247(3) | U247(3) | --      | --      | 247                            | 3/0 (.464)         | 7                  | 19                        | --  |             |
|                |                           |      |       |               |               |   |           |         |         |         |         |                                |                    |                    |                           |     | 110.8 kcmil |
| YCS28R         | 4/0 (.563)                | 6-1  | 0.875 | 2.81          | 5.75          | W249(6)   | U249(3)   | U249(3) | U249(3) | --      | --      | 249                            | 4/0 (.522)         | 7                  | 19                        | 124 |             |
|                |                           | 6-7  |       |               |               |   |           |         |         |         |         |                                |                    |                    |                           |     |             |
| YCS30R         | 266.8 kcmil (.608)        | 18-1 | 1.000 | 3.18          | 6.47          | W251(12)  | U251(6)   | U251(6) | U251(6) | --      | --      | 251                            | 266.8 kcmil (.586) | 7                  | 19                        | 158 |             |
|                | 266.8 kcmil (.633)        | 6-7  |       |               |               |   |           |         |         |         |         |                                | 266.8 kcmil (.593) |                    |                           |     |             |
|                | 266.8 kcmil (.642)        | 26-7 |       |               |               |   |           |         |         |         |         |                                |                    |                    |                           |     |             |
| YCS31R         | 300 kcmil (.680)          | 26-7 | 1.062 | 3.96          | 8.00          | --  | --        | --      | --      | --      | --      | 315                            | --                 | --                 | --                        | --  |             |
| YCS321R        | 336.4 kcmil (.684)        | 18-1 | 1.125 | 3.18          | 6.47          | --  | U490(5)   | U490(5) | U490(5) | --      | --      | L490(2)                        | 490 OR 547         | 3                  | 336.4 kcmil (.666)        | 19  | 210         |
| YCS33R         | 336.4 kcmil (.721)        | 26-7 | 1.141 | 4.31          | 8.74          | --  | U316(6)   | U316(6) | U316(6) | --      | --      | L316(2)                        | 316                | 397.5 kcmil (.724) | 19                        | --  |             |
|                | 336.4 kcmil (.741)        | 30-7 |       |               |               |   |           |         |         |         |         |                                |                    |                    |                           |     |             |
|                | 397.5 kcmil (.783)        | 26-7 |       |               |               |   |           |         |         |         |         |                                |                    |                    |                           |     |             |
| YCS35R         | 397.5 kcmil (.806)        | 30-7 | 1.250 | 4.31          | 8.80          | --  | U317(6)   | U317(6) | U317(6) | --      | --      | L317(2)                        | 317                | 477 kcmil (.783)   | 19                        | --  |             |
|                | 397.5 kcmil (.813)        | 37   |       |               |               |   |           |         |         |         |         |                                |                    |                    |                           |     |             |
|                | 500 kcmil (.815)          | 61   |       |               |               |   |           |         |         |         |         |                                |                    |                    |                           |     |             |
| YCS361R        | 477 kcmil (.814)          | 18-1 | 1.300 | 4.06          | 8.25          | --  | U327(6)   | U327(6) | U327(6) | --      | --      | L327(2)                        | 327                | 500 kcmil (.813)   | 37                        | 262 |             |
|                | 500 kcmil (.815)          | 61   |       |               |               |   |           |         |         |         |         |                                |                    |                    |                           |     |             |
| YCS37R         | 477 kcmil (.858)          | 26-7 | --    | 4.31          | 8.75          | --  | U261(6)   | U261(6) | U261(6) | --      | --      | L261(2)                        | 261                | --                 | --                        | --  |             |
|                | 477 kcmil (.883)          | 30-7 |       |               |               |   |           |         |         |         |         |                                |                    |                    |                           |     |             |
|                | 477 kcmil (.846)          | 24-7 |       |               |               |   |           |         |         |         |         |                                |                    |                    |                           |     |             |
| YCS33RGI       | 336.4 kcmil (.721)        | 26-7 | 1.062 | 2.56          | 5.25          | --  | --        | --      | --      | --      | --      | 193                            | --                 | --                 | --                        | --  |             |
|                | 336.4 kcmil (.741)        | 30-7 |       |               |               |   |           |         |         |         |         |                                |                    |                    |                           |     |             |
| YCS011R        | 80 kcmil (.367)           | 8-1  | 0.696 | 3.55          | 7.18          | --  | U245(4)   | U245(4) | U245(4) | --      | --      | L245(2)                        | 245                | --                 | --                        | --  |             |
| YCS261R        | 134.6 kcmil (.530)        | 12-7 | 1.141 | 4.33          | 8.77          | --  | U316(7)   | U316(7) | U316(7) | --      | --      | L316(2)                        | 316                | --                 | --                        | --  |             |
|                |                           |      |       |               |               |   |           |         |         |         |         |                                |                    |                    |                           |     |             |
| YCS271R        | 159 kcmil (.576)          | 12-7 | 1.250 | 4.31          | 8.80          | --  | U317(7)   | U317(7) | U317(7) | C317(2) | L317(2) | 317                            | --                 | --                 | --                        | --  |             |
| YCS284R        | 211.3 kcmil (.663)        | 12-7 | 1.250 | 4.33          | 8.81          | --  | U317(7)   | U317(7) | U317(7) | C317(2) | L317(2) | 317                            | --                 | --                 | --                        | --  |             |
| YCS251R        | 101.8 kcmil (.461)        | 12-7 | 1.141 | 4.30          | 8.76          | --  | U316(7)   | U316(7) | U316(7) | --      | --      | L316(2)                        | 316                | --                 | --                        | --  |             |
| YCS321RGI      | 336.4 kcmil (.684)        | 18-1 | 1.141 | 4.03          | 8.18          | --  | --        | --      | --      | --      | --      | --                             | --                 | --                 | --                        | --  |             |
| YCS38R         | 500 kcmil (.904)          | 30-7 | 1.500 | 3.75          | 7.62          | --  | --        | --      | --      | --      | --      | 614                            | --                 | --                 | --                        | --  |             |



- NOTES:
- MATERIAL: ALUMINUM.
  - BARRELS FILLED HALF FULL WITH PENETROX™ AND CAPPED.
  - INCLUDED KEARNEY DIE 1-1/8 UNDER INDEX COLUMN TO CATALOG NUMBER YCS321R.
  - YCS27R CAN BE USED AS A REDUCER LOOP SPLICE FPR 3/0 A.C.S.R. TO 2/0 A.C.S.R.
  - THESE LOOP HYSPLICES™ ARE DESIGNED FOR INSTALLATION WITH THE SAME DIE SETS USED FOR INSTALLING FULL TENSION HYSPLICES™. NOTE THAT Y458 HYPRES™ MUST BE USED.
  - "U" DIES USED WITH ADAPTER PT6515.
  - FLAT SIDED.
  - FOR ADDITIONAL INSTALLATION DATA SEE SA039023.
  - MD6 USE BG GROOVE, 12 CRIMPS PER END.
  - ALSO ACCOMMODATES 556.5(.879) ACSR 18-1
  - "U" DIES USED WITH ADAPTER PUADP-1

|   |  |  |                               |
|---|--|--|-------------------------------|
| TO ORDER BURNDY® PRODUCTS CALL  |  | HYSPLICE™, LOOP (ACSR) WITH METRIC REF |                               |
| UNITED STATES<br>1-800-346-4175 (LONDONDERRY, NH)                           |  | ITEM NO: --                            | CAT. NO: YCS-P (TABLE)        |
| CANADA:<br>1-800-361-6975 (QUEBEC)<br>1-800-387-6487 (ALL OTHER PROVINCES)  |  | DRAWN BY: M MOHAN 08/17/20             | CHECKER: NJ SUDHAKAR 08/17/20 |
| FOR PRODUCT INFO: <a href="http://www.burndy.com">http://www.burndy.com</a> |  | DSN APPVL: D DOBRINSKI 08/15/20        | MFG APPVL: --                 |
|   |  | GA APPVL: T WATTS 08/14/20             | MKT APPVL: J HALL 08/14/20    |
|   |  | PROD FAM: --                           | SCALE: 2:1                    |
|   |  | PROJECT #: --                          | DRAWING NO: 50115707          |
|   |  | DOCUMENT TYPE: Sales                   | REV: A                        |
|   |  | REL LEVEL: Released                    | SHEET 1 OF 1                  |