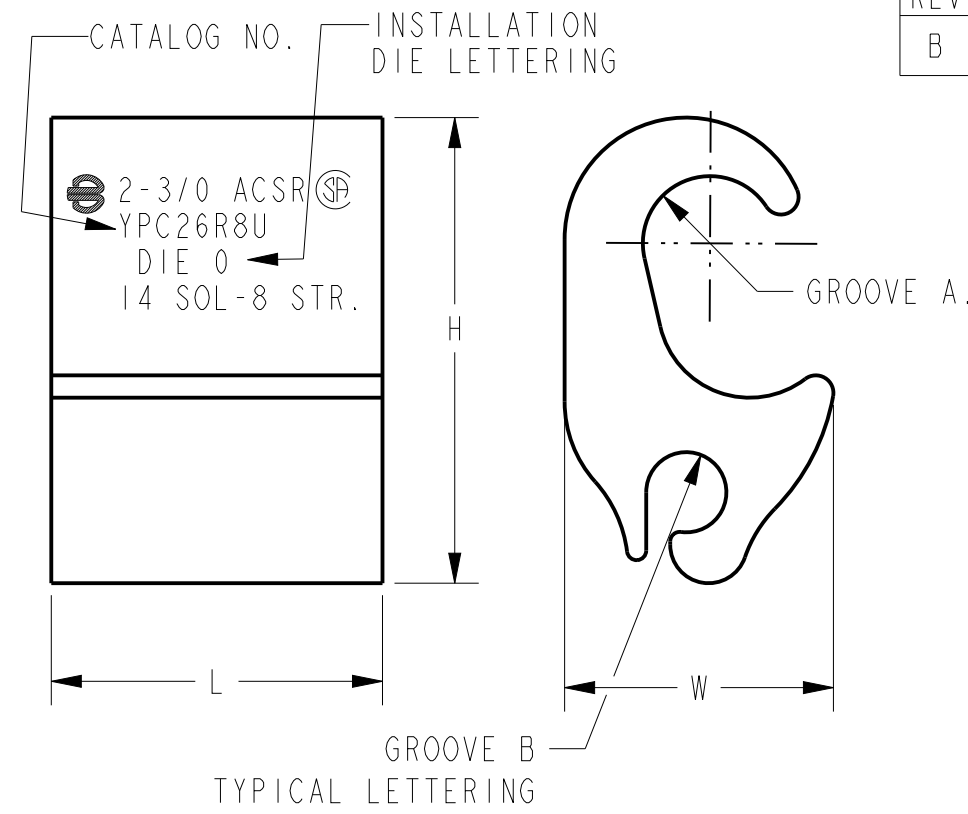
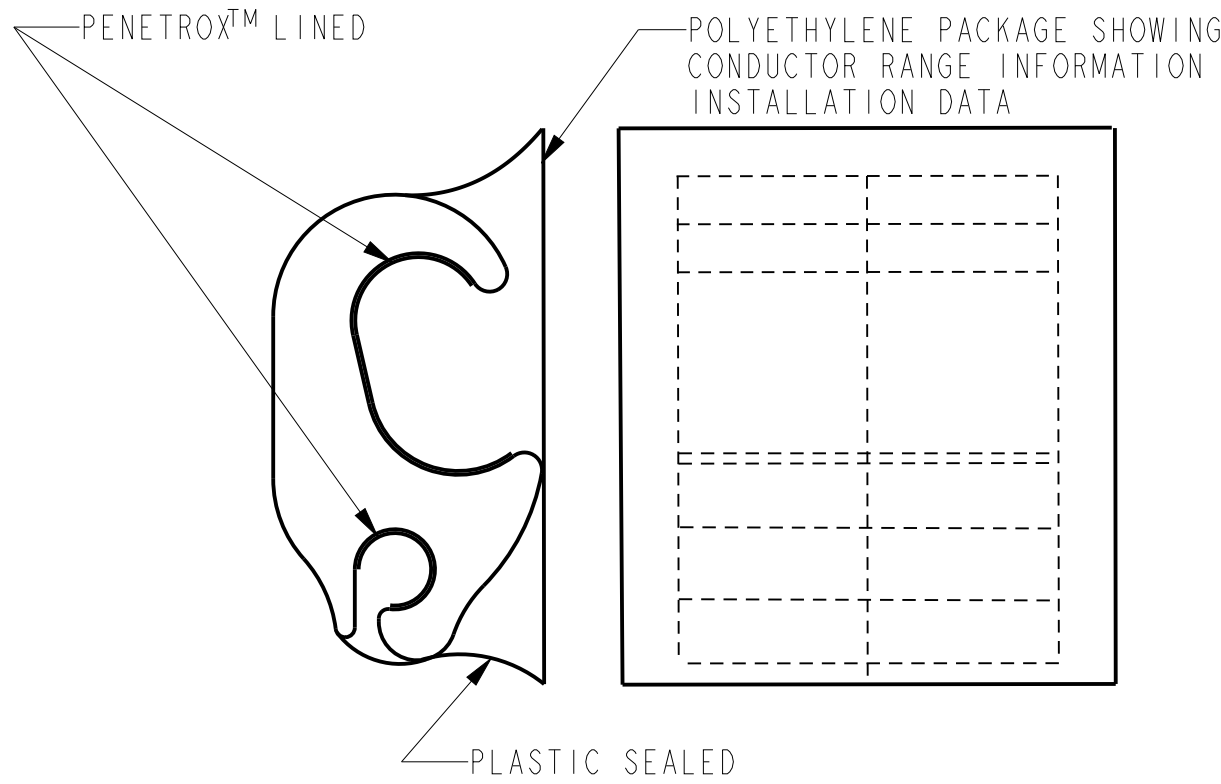


REV	DATE	DESCRIPTION	ECO	BY	C'H'K.
B	10/21/2011 00:00:00 AM	"A" & "B" & "C" ITEM REDRAW PROJECT	25787	AB	NJ



CATALOG NO.	AWG						
	ACCOMMODATES						
	GROOVE A				GROOVE B		
	SOLID CU. OR AL.	STRANDED CU. OR AL.	STRANDED COMPRESSED	ACSR	ACSR COMPRESSED	SOLID CU. OR AL.	STRANDED CU. OR AL.
YPC2A8U	4,2	6,4,2	4,2	6,4,2	6,4,2	14,12,10,9,8	14,12,10,9,8
YPC26R8U	1/0,2/0,3/0	1,1/0,2/0,3/0	1,1/0,2/0,3/0	2,1,1/0,2/0,3/0,(6/1)	1,1/0,2/0,3/0	14,12,10,9,8	14,12,10,9,8

CATALOG NO.	METRIC WIRE SIZE						
	ACCOMMODATES						
	GROOVE A				GROOVE B		
	SOLID CU. OR AL. [mm ²]	STRANDED CU. OR AL. [mm ²]	STRANDED COMPRESSED [mm ²]	ACSR [mm ²]	ACSR COMPRESSED [mm ²]	SOLID CU. OR AL. [mm ²]	STRANDED CU. OR AL. [mm ²]
YPC2A8U	N/A	16,25	N/A	16/2.5,25/4,35/6	N/A	2,5,4,6	2,5,4,6
YPC26R8U	N/A	50,70	N/A	35/6,50/8,70/2	N/A	2,5,4,6	2,5,4,6

CATALOG NO.	H	L	W	DIE INDEX	TOOLS, DIE SET CATALOG NO. & NUMBER OF CRIMPS			OUR 840
					MD6	Y35, Y750, Y45, Y46		
YPC2A8U	.97 [25]	.69 [18]	.56 [14]	BG OR 5/8	BG 2 W-BG 1	U-BG 1	XBG 1	
YPC26R8U	1.30 [33]	.75 [19]	.73 [19]	0	W-0 2	U-0 1	W-0 2	

NOTES:

- MATERIAL: ALUMINIUM
- DIMENSIONS IN BRACKETS [] ARE IN MILLIMETER, UNLESS OTHERWISE NOTED AND ARE FOR REFERENCE ONLY.
- N/A - NOT AVAILABLE

4 CAT. NO. PT6515 ADAPTOR IS REQUIRED TO USE 'U' TYPE DIES IN Y45 SERIES TOOLS.
CAT. NO. PUADP-1 ADAPTOR IS REQUIRED TO USE 'U' TYPE DIES IN Y46 SERIES TOOLS.

5 MULTIPLE CRIMP DIE SET, MAKES MORE THAN ONE CRIMP PER TOOL COMPRESSION.

TO ORDER BURNDY® PRODUCTS CALL		CRIMPIT™ STREET LIGHTING	
UNITED STATES: 1-800-346-4175 (LONDONDERRY, NH)		ITEM NO: N/A	
CANADA: 1-800-361-6975 (QUEBEC) 1-800-387-6487 (ALL OTHER PROVINCES)		CAT. NO: YPC2A8U & YPC26R8U (TABLE)	
FOR PRODUCT INFO: http://www.burndy.com		DRAWN BY: RHH	02/01/64
		CHECKER: MBD	02/04/64
		DSN APPVL: EMV	02/04/64
		MFG APPVL: --	--
		QA APPVL: --	--
		MKT APPVL: --	--
		PROD FAM: CM&R COMPRESSION	SCALE: 5:2
		PROJECT #: --	DRAWING NO
		DOCUMENT TYPE: Sales	REV
		REL LEVEL: Released	SD055635-01
			SHEET 1 OF 1

REV: PE0200