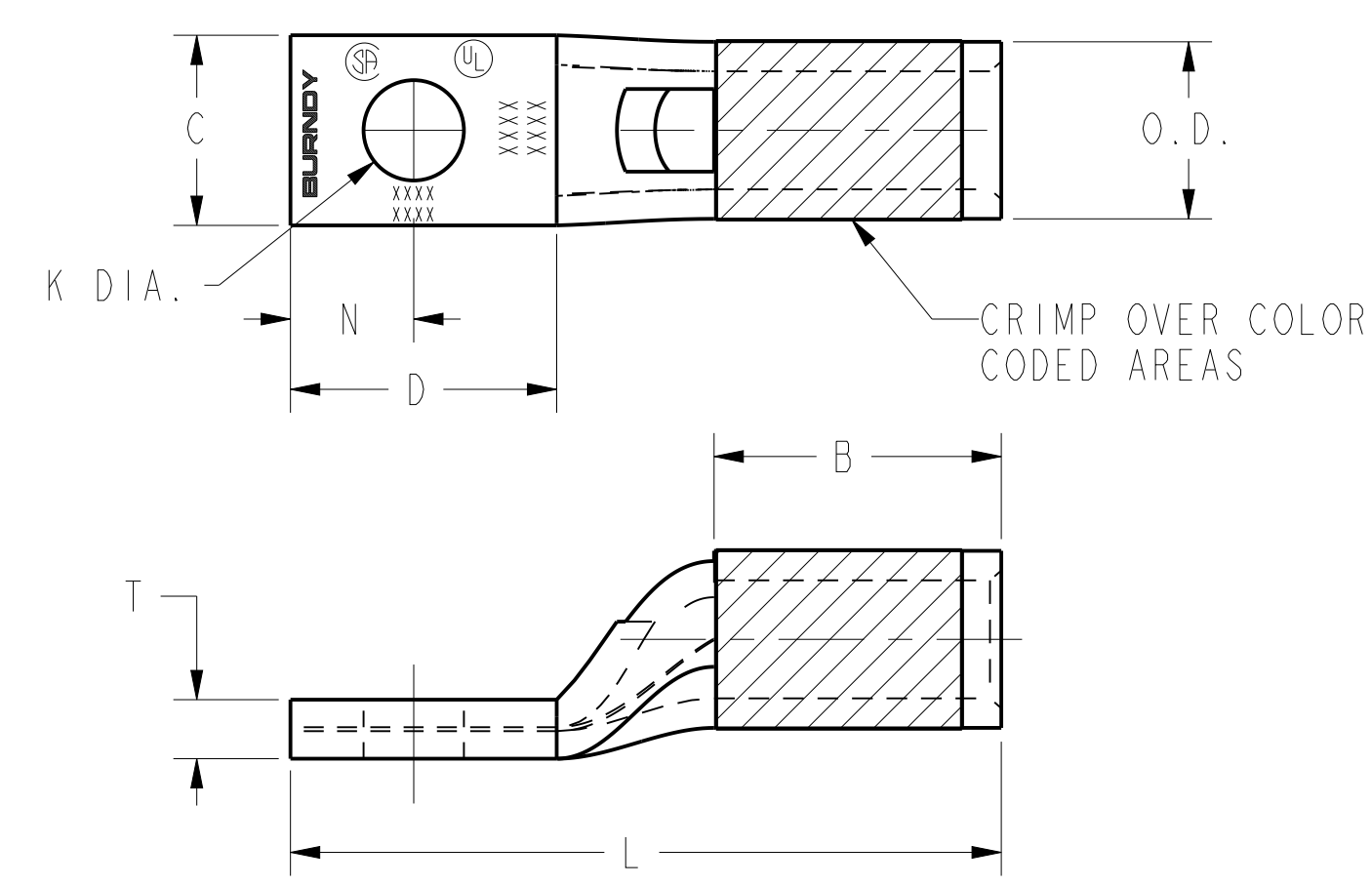


CATALOG NUMBER	FIG. NO.	CONDUCTOR		STUD HOLE SIZE	DIMENSIONS								DIELESS (# OF CRIMPS)	INSTALLATION TOOLING									WIRE STRIP LENGTH		
		AWG	MM ²		O.D.	B	C	D MIN.	K DIA.	L	N	T		MECHANICAL		HYDRAULIC									
														MD6, OUR840, MD7-34R	BCT500HS, Y500CTHS	Y35, Y39, Y750, PAT750	Y46 PAT46	Y45	Y48	Y60	COLOR CODE	DIE INDEX			
YA8CLNT6	I	#8 AWG	10	6	.27 [7]	.44 [11]	.29 [7]	.41 [10]	.15 [4]	1.08 [27]	.19 [5]	.09 [2]	Y8MRB1 (1) MY293 (1) MRC840 (1) Y81KFT (1) PAT81KFT (1) YIMRTC (1) Y122CMR (1)	W8CVT (1)	X8CRT (1)	U8CRT (1)	U8CRT (1)	U8CRT (1)	--	--	RED	49	1/2"		
YA8CLNT8	I			8	.27 [7]	.44 [11]	.33 [8]	.47 [12]	.18 [5]	1.18 [30]	.22 [6]	.09 [2]													
YA8CLNT10	I			8	.27 [7]	.44 [11]	.33 [8]	.52 [13]	.20 [5]	1.18 [30]	.22 [6]	.09 [2]													
YA6CLNT6	I	#6 AWG	--	6	.29 [7]	.54 [14]	.29 [7]	.41 [10]	.15 [4]	1.17 [30]	.19 [5]	.09 [2]		W5CVT (1)	X5CRT (1)	U5CRT (1)	U5CRT (1)	U5CRT (1)	--	--	BLUE	7	7/8"		
YA4CLNT10	I	#4 AWG	--	#10	.34 [9]	.81 [21]	.40 [10]	.64 [16]	.20 [5]	1.73 [44]	.31 [8]	.09 [2]	MY29-3 (1) YIMRTC 2) Y122CMR (2) MY29-11 (1) MRC840 Y644HS (1) Y81KFT(1) Y81KFTMBH (1) PAT81KFT-18V (1) PAT644 (1) PAT444 (1)	W4CVT (1)	X4CRT (1)	U4CRT (1)	U4CRT (1)	U4CRT (1)	--	--	GRAY	8	7/8"		
YA3CLNT14	I	#3 AWG #2SOL.	25	1/4"	.38 [10]	.88 [22]	.41 [10]	.70 [18]	.27 [7]	1.82 [46]	.31 [8]	.09 [2]		--	--	U3CRT (1)	U3CRT (1)	U3CRT (1)	--	--	WHITE	9	15/16"		
YA3CLNT516	I			5/16"	.38 [10]	.88 [22]	.49 [12]	.62 [16]	.33 [8]	1.80 [46]	.25 [6]	.09 [2]													
YA2CLNT10	I	#2 AWG	35	#10	.42 [11]	.88 [22]	.48 [12]	.56 [14]	.20 [5]	1.80 [46]	.25 [6]	.11 [3]	Y644HS (1) Y81KFT(1) Y81KFTMBH (1) PAT81KFT-18V (1) PAT644 (1) PAT444 (1)	W2CVT (1)	X2CRT (1)	U2CRT (1)	U2CRT (1)	U2CRT (1)	--	--	BROWN	10	15/16"		
YA2CLNT14	I			1/4"	.42 [11]	.88 [22]	.50 [13]	.56 [14]	.27 [7]	1.80 [46]	.25 [6]	.11 [3]													
YA2CLNT516	I			5/16"	.42 [11]	.88 [22]	.49 [12]	.62 [16]	.33 [8]	1.82 [46]	.25 [6]	.11 [3]													
YA1CLNT10	I	#1 AWG	50	#10	.46 [12]	.88 [22]	.50 [13]	.94 [24]	.20 [5]	2.23 [57]	.25 [6]	.10 [3]	MY29-3(1) MY29-11 (1) MRC840 Y644HS (1) Y81KFT(1) Y81KFTMBH (1) PAT81KFT-18V (1) PAT644 (1) PAT444 (1)	W1CVT (1)	X1CRT-1 (1)	U1CRT-1 (1)	U1CRT-1 (1)	U1CRT-1 (1)	--	--	GREEN	11	15/16"		
YA1CLNT14	I			1/4"	.46 [12]	.88 [22]	.50 [13]	.94 [24]	.27 [7]	2.23 [57]	.25 [6]	.10 [3]													
YA1CLNT516	I	#1 AWG	35	5/16"	.46 [12]	.63 [16]	.44 [11]	.70 [18]	.33 [8]	1.78 [45]	.34 [9]	.10 [3]	YIMRTC(2) MY29-11(1) Y81KFT(1) Y644(1) Y444(1)	W1CVT (1)	X1CRT-1 (1)	U1CRT-1 (1)	U1CRT-1 (1)	U1CRT-1 (1)	--	--	GREEN	11	15/16"		
YA25LNT10	I	1/0 AWG	--	#10	.51 [13]	.88 [22]	.62 [16]	.94 [24]	.20 [5]	2.28 [58]	.33 [8]	.12 [3]	MY29-3(1) MY29-11 (1) MRC840 Y644HS (1) Y81KFT(1) Y81KFTMBH (1) PAT81KFT-18V (1) PAT644 (1) PAT444 (1)	W25VT (2)	X25RT (2)	U25RT (1)	U25RT (1)	U25RT (1)	--	--	PINK	12	15/16"		
YA25LNT14	I			1/4"	.51 [13]	.88 [22]	.48 [12]	.67 [17]	.27 [7]	1.93 [49]	.31 [8]	.12 [3]													
YA25LNT516	I			5/16"	.51 [13]	.88 [22]	.62 [16]	.94 [24]	.33 [8]	2.28 [58]	.33 [8]	.12 [3]													
YA25LNT38	I			3/8"	.51 [13]	.88 [22]	.62 [16]	.85 [22]	.41 [10]	2.18 [55]	.41 [10]	.12 [3]													
YA26LNT10	I	2/0 AWG	70	#10	.56 [14]	.94 [24]	.62 [16]	1.14 [29]	.20 [5]	2.62 [67]	.33 [8]	.13 [3]	MY29-3(1) MY29-11 (1) MRC840 Y644HS (1) Y81KFT(1) Y81KFTMBH (1) PAT81KFT-18V (1) PAT644 (1) PAT444 (1)	W26VT (2)	X26RT (2)	U26RT (1)	U26RT (1)	U26RT (1)	--	--	BLACK	13	1"		
YA26LNT14	I			1/4"	.56 [14]	.94 [24]	.48 [12]	.59 [15]	.27 [7]	2.02 [51]	.25 [6]	.13 [3]													
YA26LNT516	I			5/16"	.56 [14]	.94 [24]	.62 [16]	1.14 [29]	.33 [8]	2.62 [67]	.33 [8]	.13 [3]													
YA26LNT38	I			3/8"	.56 [14]	.94 [24]	.72 [18]	1.02 [26]	.41 [10]	2.51 [64]	.41 [10]	.12 [3]													

TOLERANCE BLOCK							
CONNECTOR SIZE	TOLERANCES						
	B	C	E	K DIA.	L	N	O.D.
-8C THRU -25	±.06	±.04	±.02	±.02	±.09	±.03	±.01
-26 THRU -34	±.08	±.04	±.02	±.02	±.12	±.03	±.01
-35 AND UP	±.09	±.06	±.02	±.02	±.15	±.06	±.01



REV	DATE	DESCRIPTION	ECO	BY	C'K'K.
AB	2021-05-27 00:00:00 EDT	UPDATED D MIN, L & N DIMENSIONS FOR YA26LNT38	210521008417	JL	RR

NOTES:
 1. MATERIAL: COPPER TUBING.
 2. FINISH: TIN PLATED.
 3. DIMENSIONS IN BRACKETS [] ARE IN MILLIMETERS ROUNDED OFF TO THE NEAREST MILLIMETER, UNLESS OTHERWISE NOTED, AND ARE FOR REFERENCE ONLY.
 4. INSTALLATION TOOLING AND DIES ARE CONSTANTLY BEING UPDATED. FOR THE LATEST INSTALLATION TOOLING INFORMATION REFER TO THE MASTER CATALOG ON THE BURNDY WEBSITE.

HYLUG™ COPPER (NARROW TONGUE)

ITEM NO: N/A
 CAT. NO: YA-L-NT-(TABLE)
 DRAWN BY: AUGUSTIN.S 07/03/10
 CHECKER: --
 DSN APPVL: J MICHAUD 06/11/11
 MFG APPVL: T THRELFALL 06/23/11
 QA APPVL: T WATTS 06/13/11
 MKT APPVL: J SYLVIA 06/13/11

SCALE: 1:1

PROD FAM: CM&R COMPRESSION
 DRAWING NO: 30003952
 PROJECT #: --
 DOCUMENT TYPE: Sales
 REL LEVEL: Released

AB

REV: CREO 05/20/21

DRAWING NO. 30003952		7			6			5			4			3			2			1							
CATALOG NUMBER	FIG. NO.	CONDUCTOR		STUD HOLE SIZE	DIMENSIONS							DIELESS (# OF CRIMPS)	INSTALLATION TOOLING										WIRE STRIP LENGTH				
		AWG	MM ²		O.D.	B	C	D MIN.	K DIA.	L	N		T	MECHANICAL		HYDRAULIC						COLOR CODE		DIE INDEX			
														MD6, OUR840, MD7-34R	BCT500HS, Y500CTHS	Y35, Y39, Y750, PAT750	Y46 PAT46	Y45	Y48	Y60							
YA27LNT14	I	3/0 AWG	--	1/4"	.62 [16]	1.00 [25]	.76 [19]	.67 [17]	.27 [7]	2.10 [53]	.31 [8]	.13 [3]	Y644HS (1) Y81KFT(2) Y81KFTMBH (2) PAT81KFT-18V (2) PAT644 (1) PAT444 (1)	W27VT(2)	X27RT(3)	U27RT(1)	U27RT(1)	U27RT(1)	--	--	ORANGE	14	1-1/16"				
YA27LNT516	I			5/16"	.62 [16]	1.00 [25]	.60 [15]	.77 [20]	.33 [8]	2.17 [55]	.34 [9]	.12 [3]															
YA27LNT38	I			3/8"	.62 [16]	1.00 [25]	.73 [19]	1.14 [29]	.41 [10]	2.64 [67]	.41 [10]	.12 [3]															
YA28LNT14	I	4/0 AWG	--	1/4"	.69 [18]	.88 [22]	.76 [19]	1.07 [27]	.27 [7]	2.60 [66]	.31 [8]	.14 [4]		Y644HS (1) Y81KFT(2) Y81KFTMBH (2) PAT81KFT-18V (2) PAT644 (1) PAT444 (1)	W28VT(2)	X28RT(3)	U28RT(1)	U28RT(1)	U28RT(1)	C28R(1)	L28RT(1)	PURPLE	15	1-1/8"			
YA28LNT516	I			5/16"	.69 [18]	.88 [22]	.70 [18]	.77 [20]	.33 [8]	2.09 [53]	.34 [9]	.14 [4]															
YA28LNT38	I			3/8"	.69 [18]	.88 [22]	.76 [19]	1.14 [29]	.41 [10]	2.67 [68]	.41 [10]	.14 [4]															
YA29LNT516	I	250 kcmil	--	5/16"	.75 [19]	1.06 [27]	.76 [19]	.72 [18]	.33 [8]	2.48 [63]	.34 [9]	.16 [4]			Y644HS (1) Y81KFT(2) Y81KFTMBH (2) PAT81KFT-18V (2) PAT644 (1) PAT444 (1)	W29VT(2)	X29RT(4)	U29RT(1)	U29RT(1)	U29RT(1)	L29R(1)	L29RT(1)	YELLOW	16	1-1/8"		
YA29LNT38	I			3/8"	.75 [19]	1.06 [27]	.76 [19]	1.20 [30]	.41 [10]	2.96 [75]	.41 [10]	.16 [4]															
YA29LNT12	I			1/2"	.75 [19]	1.06 [27]	.96 [24]	1.20 [30]	.53 [13]	3.08 [78]	.53 [13]	.16 [4]															
YA30LNT14	I	300 kcmil	150	1/4"	.81 [21]	1.03 [26]	.83 [21]	.71 [18]	.27 [7]	2.26 [57]	.31 [8]	.16 [4]				Y644HS (1) Y81KFT(2) Y81KFTMBH (2) PAT81KFT-18V (2) PAT644 (1) PAT444 (1)	W30VT(4)	----	U30RT(2)	U30RT(2)	U30RT(2)	C30R(2)	L30RT(1)	WHITE	17	1-1/8"	
YA30LNT38	I			3/8"	.81 [21]	1.03 [26]	.96 [24]	1.20 [30]	.41 [10]	2.97 [75]	.41 [10]	.16 [4]															
YA30LNT12	I			1/2"	.81 [21]	1.03 [26]	.96 [24]	1.20 [30]	.53 [13]	3.09 [78]	.53 [13]	.16 [4]															
YA31LNT38	I	350 kcmil	185	3/8"	.88 [22]	1.06 [27]	.96 [24]	1.45 [37]	.41 [10]	3.31 [84]	.41 [10]	.18 [4]	Y644HS (1) Y81KFT(2) Y81KFTMBH (2) PAT81KFT-18V (2) PAT644 (1) PAT444 (1)				W31VT(4)	----	U31RT(2)	U31RT(2)	U31RT(2)	C31R(2)	L31RT(1)	RED	18	1-3/16"	
YA31LNT12	I			1/2"	.88 [22]	1.06 [27]	.88 [22]	1.14 [29]	.53 [13]	2.75 [70]	.53 [13]	.18 [4]															
YA32LNT38	I	400 kcmil	--	3/8"	.95 [24]	1.19 [30]	.96 [24]	1.20 [30]	.41 [10]	3.21 [82]	.41 [10]	.20 [5]					Y644HS (1) Y81KFT(2) Y81KFTMBH (2) PAT81KFT-18V (2) PAT644 (1) PAT444 (1)	W32VT(4)	----	U32RT(2)	U32RT(2)	U32RT(2)	C32R(2)	L32RT(1)	BLUE	19 OR 470	1-1/4"
YA32LNT12	I			1/2"	.95 [24]	1.19 [30]	.96 [24]	1.20 [30]	.53 [13]	3.21 [82]	.53 [13]	.19 [5]															
YA34LNT38	I	500 kcmil	240	3/8"	1.06 [27]	1.27 [32]	.96 [24]	1.45 [37]	.41 [10]	3.65 [93]	.41 [10]	.23 [6]		Y644HS (1) Y81KFT(2) Y81KFTMBH (2) PAT81KFT-18V (2) PAT644 (1) PAT444 (1)				W34VT(4)	----	U34RT(2)	U34RT(2)	U34RT(2)	C34R(1)	L34RT(1)	BROWN	20 OR 299	1-7/16"
YA34LNT12	I			1/2"	1.06 [27]	1.27 [32]	.96 [24]	1.45 [37]	.53 [13]	3.65 [93]	.53 [13]	.23 [6]															
YA36LNT38	I	600 kcmil	300	3/8"	1.18 [30]	1.38 [35]	1.12 [28]	1.70 [43]	.41 [10]	4.09 [104]	.50 [13]	.27 [7]			Y644HS (1) Y81KFT(2) Y81KFTMBH (2) PAT81KFT-18V (2) PAT644 (1) PAT444 (1)			----	----	U36RT(2)	U36RT(2)	U36RT(2)	C36R(1)	L36RT(1)	GREEN	22	1-3/4"
YA36LNT12	I			1/2"	1.188 [30]	1.38 [35]	1.00 [25]	1.17 [30]	.53 [13]	3.29 [84]	.53 [13]	.27 [7]															
YA39LNT38	I	750 kcmil	--	3/8"	1.300 [33]	1.42 [36]	1.12 [28]	1.70 [43]	.41 [10]	4.24 [108]	.50 [13]	.27 [7]						Y644HS (1) Y81KFT(2) Y81KFTMBH (2) PAT81KFT-18V (2) PAT644 (1) PAT444 (1)	----	----	U39RT(2)	U39RT(2)	U39RT(2)	C39R(1)	L39RT(1)	BLACK	24
YA39LNT12	I			1/2"	1.300 [33]	1.42 [36]	1.63 [41]	1.70 [43]	.56 [14]	4.24 [108]	.53 [13]	.27 [7]															
YA39LNT58	I			5/8"	1.300 [33]	1.42 [36]	1.30 [33]	1.43 [36]	.69 [10]	3.67 [93]	.66 [17]	.27 [7]															

TOLERANCE BLOCK							
CONNECTOR SIZE	TOLERANCES						
	B	C	E	K DIA.	L	N	O.D.
-8C THRU -25	±.06	±.04	±.02	±.02	±.09	±.03	±.01
-26 THRU -34	±.08	±.04	±.02	±.02	±.12	±.03	±.01
-35 AND UP	±.09	±.06	±.02	±.02	±.15	±.06	±.01

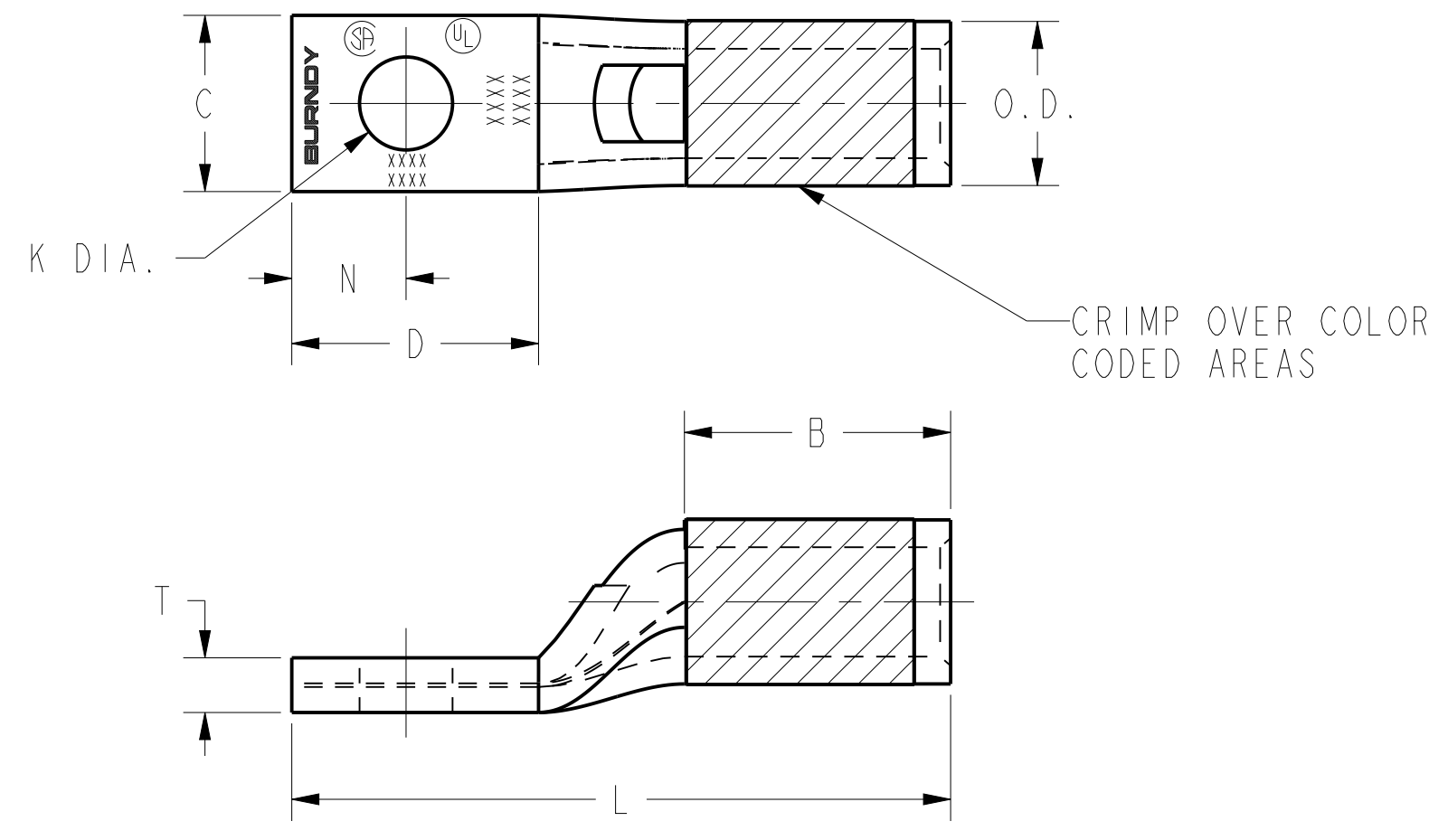


FIG. 1

- NOTES:
- MATERIAL: COPPER TUBING.
 - FINISH: TIN PLATED.
 - DIMENSIONS IN BRACKETS [] ARE IN MILLIMETERS ROUNDED OFF TO THE NEAREST MILLIMETER, UNLESS OTHERWISE NOTED, AND ARE FOR REFERENCE ONLY.
 - INSTALLATION TOOLING AND DIES ARE CONSTANTLY BEING UPDATED. FOR THE LATEST INSTALLATION TOOLING INFORMATION REFER TO THE MASTER CATALOG ON THE BURNDY WEBSITE.

REV	DATE	DESCRIPTION	ECO	BY	C'H'K.
AB	2021-05-27 00:00:00 EDT	UPDATED D MIN, L & N DIMENSIONS FOR YA26LNT38	210521008417	JL	RR

HYLUG™ COPPER (NARROW TONGUE)	
ITEM NO:	N/A
CAT. NO:	YA-L-NT-(TABLE)
DRAWN BY:	AUGUSTIN.S 07/03/10
CHECKER:	--
DSN APPVL:	J MICHAUD 06/11/11
MFG APPVL:	T THRELFALL 06/23/11
QA APPVL:	T WATTS 06/13/11
MKT APPVL:	J SYLVIA 06/13/11
PROD FAM:	CM&R COMPRESSION
PROJECT #:	--
DOCUMENT TYPE:	Sales
REL LEVEL:	Released
DRAWING NO:	30003952
SCALE:	1:1
SIZE:	D
REV	AB
SHEET	2 OF 12

REV: CREO_05/20/21

CATALOG NUMBER	FIG. NO.	CONDUCTOR		STUD HOLE SIZE	DIMENSIONS									DIELESS (# OF CRIMPS)	INSTALLATION TOOLING								WIRE STRIP LENGTH		
		AWG	MM ²		O.D.	B	C	D MIN.	E	K DIA.	L	N	T		MECHANICAL		HYDRAULIC								
															MD6, OUR840, MD7-34R	BCT500HS, Y500CTHS	Y35, Y39, Y750, PAT750	Y46 PAT46	Y45	Y48	Y60	COLOR CODE		DIE INDEX	
YA2CL2NT14	2	#2 AWG	35	1/4"	.42 [11]	.88 [22]	.48 [12]	1.26 [32]	.63 [16]	.27 [7]	2.47 [63]	.31 [8]	.11 [3]	Y122CMR (2) MRC840(1) MY29-3(1) MY29-11(1) Y644HS(1) YIMRTC(2) Y81KFT(1) Y81KFTMBH(1) PAT81KFT-18V(1) PAT644 (1) PAT444 (1)	W2CVT(1)	W2CVT(1)	U2CRT(1)	U2CRT(1)	U2CRT(1)	--	--	BROWN	10	15/16"	
YA2CL2NT14E2	2			1/4"	.42 [11]	.88 [22]	.48 [12]	1.39 [35]	.75 [19]	.27 [7]	2.60 [66]	.31 [8]	.11 [3]												
YA2CL2NT14E1	2			1/4"	.42 [11]	.88 [22]	.48 [12]	1.64 [42]	1.00 [25]	.27 [7]	2.84 [72]	.31 [8]	.11 [3]												
YA1CL2NT14	2	#1 AWG	50	1/4"	.46 [12]	.88 [22]	.50 [13]	1.26 [32]	.63 [16]	.27 [7]	2.55 [65]	.31 [8]	.11 [3]	MRC840(1) MY29-3(1) MY29-11(1) YIMRTC(2) Y644HS(1) Y81KFT(1) PAT444 (1) PAT81KFT-18V(1)	W1CVT(1)	X1CRT-1(1)	U1CRT-1 (1)	U1CRT-1 (1)	U1CRT-1 (1)	--	--	GREEN	11	15/16"	
YA1CL2NT14E2	2			1/4"	.46 [12]	.88 [22]	.50 [13]	1.39 [35]	.75 [19]	.27 [7]	2.68 [68]	.31 [8]	.10 [3]												
YA25L2NT14	2	1/0 AWG	--	1/4"	.51 [13]	.88 [22]	.48 [12]	1.30 [33]	.63 [16]	.27 [7]	2.56 [65]	.31 [8]	.10 [3]	MRC840(2) MY29-3(1) MY29-11(1) Y644HS(1) Y81KFT(1) PAT444 (1) PAT81KFT-18V(1)	W25VT(2)	W25VT(2)	U25RT(1)	U25RT(1)	U25RT(1)	--	--	PINK	12	15/16"	
YA25L2NT14E1	2			1/4"	.51 [13]	.88 [22]	.48 [12]	1.94 [49]	1.00 [25]	.27 [7]	3.28 [83]	.25 [6]	.12 [3]												
YA26L2NT14	2	2/0 AWG	70	1/4"	.56 [14]	.94 [24]	.48 [12]	1.22 [31]	.63 [16]	.27 [7]	2.66 [68]	.25 [6]	.12 [3]	MRC840(2) MY29-3(1) MY29-11(1) Y644HS(1) Y81KFT(1) PAT444 (1) PAT81KFT-18V(1)	W26VT(1)	W26VT(2) X26RT(2)	U26RT(1)	U26RT(1)	U26RT(1)	--	--	BLACK	13	1"	
YA26L2NT14E1	2			1/4"	.56 [14]	.94 [24]	.48 [12]	1.60 [41]	1.00 [25]	.27 [7]	3.03 [77]	.25 [6]	.12 [3]												

TOLERANCE BLOCK							
CONNECTOR SIZE	TOLERANCES						
	B	C	E	K DIA.	L	N	O.D.
-8C THRU -25	±.06	±.04	±.02	±.02	±.09	±.03	±.01
-26 THRU -34	±.08	±.04	±.02	±.02	±.12	±.03	±.01
-35 AND UP	±.09	±.06	±.02	±.02	±.15	±.06	±.01

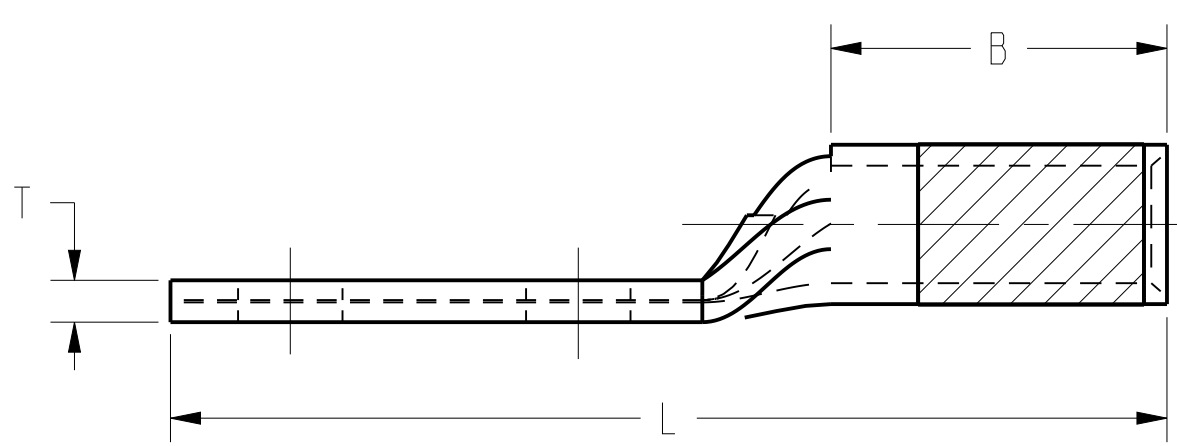
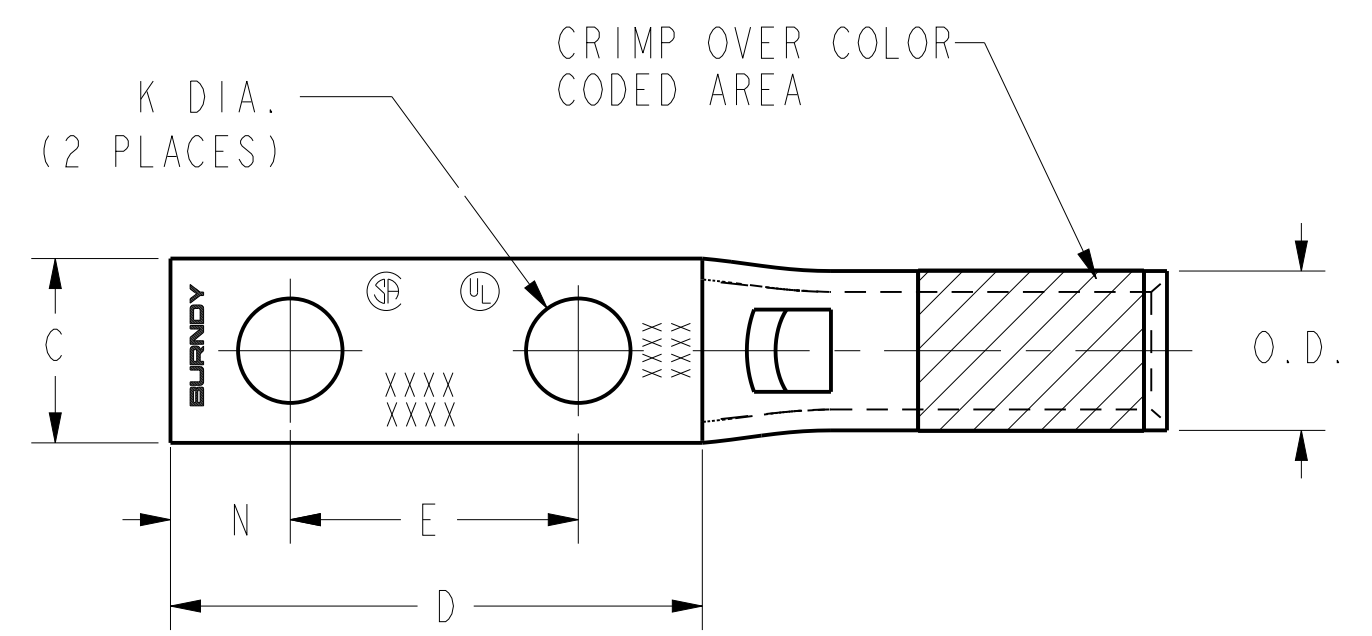


FIG. 2

- NOTES:
- MATERIAL: COPPER TUBING.
 - FINISH: TIN PLATED.
 - DIMENSIONS IN BRACKETS [] ARE IN MILLIMETERS ROUNDED OFF TO THE NEAREST MILLIMETER, UNLESS OTHERWISE NOTED, AND ARE FOR REFERENCE ONLY.
 - INSTALLATION TOOLING AND DIES ARE CONSTANTLY BEING UPDATED. FOR THE LATEST INSTALLATION TOOLING INFORMATION REFER TO THE MASTER CATALOG ON THE BURNDY WEBSITE.

REV	DATE	DESCRIPTION	ECO	BY	C'H'K.
AB	2021-05-27 00:00:00 EDT	UPDATED D MIN, L & N DIMENSIONS FOR YA26LNT38	210521008417	JL	RR

HYLUG™ COPPER (NARROW TONGUE)	
ITEM NO:	N/A
CAT. NO:	YA-L-NT-(TABLE)
DRAWN BY:	AUGUSTIN.S 07/03/10
CHECKER:	--
DSN APPVL:	J MICHAUD 06/11/11
MFG APPVL:	T THRELFALL 06/23/11
QA APPVL:	T WATTS 06/13/11
MKT APPVL:	J SYLVIA 06/13/11
PROD FAM:	CM&R COMPRESSION
PROJECT #:	--
DOCUMENT TYPE:	Sales
REL LEVEL:	Released

SCALE: 1:1	DRAWING NO: 30003952	REV: AB
SIZE: D	SHEET 3 OF 12	

REV: CREO 05/20/21

DRAWING NO. 30003952	7			6				5				4				3				2		1			
	CATALOG NUMBER	FIG. NO.	CONDUCTOR		STUD HOLE SIZE	DIMENSIONS								DIELESS (# OF CRIMPS)	INSTALLATION TOOLING										WIRE STRIP LENGTH
			AWG	MM ²		O.D.	B	C	D MIN.	E	K DIA.	L	N		T	MECHANICAL		HYDRAULIC							
														MD6, OUR840, MD7-34R	BCT500HS, Y500CTHS	Y35, Y39, Y750, PAT750	Y46 PAT46	Y45	Y48	Y60	COLOR CODE	DIE INDEX			
YA27L2NT14	2	3/0 AWG	--	1/4"	.62 [16]	1.00 [25]	.76 [19]	1.30 [33]	.63 [16]	.27 [7]	2.73 [69]	.31 [8]	.13 [3]	MY29-3(1) MY29-11(1) MRC840(2) Y644HS(1) Y81KFT(1) Y81KFTMBH(1) PAT81KFT-18V(1) PAT644 (1) PAT444 (1)	W27VT(2) W27RT(2) X27RT(3)	W27VT(2) W27RT(2) X27RT(3)	U27RT(1)	U27RT(1)	U27RT(1)	--	--	ORANGE	14	1-1/16"	
YA27L2NT38	2			3/8"	.62 [16]	1.00 [25]	.60 [15]	1.74 [44]	1.00 [25]	.41 [10]	3.30 [84]	.41 [10]	.13 [3]												
YA27L2NT516	2			5/16"	.62 [16]	1.00 [25]	.60 [15]	1.73 [44]	1.00 [25]	.33 [8]	3.26 [83]	.31 [8]	.13 [3]												
YA28L2NT14	2	4/0 AWG	--	1/4"	.69 [18]	.88 [22]	.76 [19]	1.30 [33]	.63 [16]	.27 [7]	2.65 [67]	.31 [8]	.13 [3]	W27RT(2)	W28RT(2) X28RT(3)	U28RT(1)	U28RT(1)	U28RT(1)	C28R(1)	L28RT(1)	PURPLE	15	1-1/16"		
YA29L2NT38	2	250 kcmil	--	3/8"	.75 [19]	1.00 [25]	.80 [20]	1.83 [47]	1.00 [25]	.41 [10]	3.43 [87]	.41 [10]	.16 [4]	MY29-3(1) MY29-11(1) Y644HS(1) Y81KFT(1) PAT444 (1) PAT81KFT-18V(1)	W29VT(2) X29RT(2)	W29VT(2) W29RT(2) X29RT(2)	U29RT(1)	U29RT(1)	U29RT(1)	C29R(1)	L29RT(1)	YELLOW	16	1-1/8"	
YA29L2NT38E16	2			3/8"	.75 [19]	1.06 [27]	.80 [20]	1.83 [47]	1.75 [44]	.41 [10]	4.18 [106]	.41 [10]	.16 [4]												
YA31L2NT38	2	350 kcmil	185	3/8"	.88 [22]	1.06 [27]	.96 [24]	1.82 [46]	1.00 [25]	.41 [10]	3.51 [89]	.41 [10]	.18 [4]	Y644HS(1) Y81KFT(1) Y81KFTMBH(1) PAT81KFT-18V(1) PAT644 (1) PAT444 (1)	W31VT(2)	W31VT(2) W31RT(2)	U31RT(2) U29ART(2)	U31RT(2) U29ART(2)	U31RT(2) U29ART(2)	C31R(2) C29AR(2)	L31RT(1) L29ART(1)	RED	18	1-1/8"	
YA31L2NT38E16	2			3/8"	.88 [22]	1.06 [27]	.88 [22]	2.59 [66]	1.75 [44]	.41 [10]	4.36 [111]	.41 [10]	.18 [4]												
YA31L2NNT	2			1/2"	.88 [22]	1.06 [27]	.88 [22]	3.00 [76]	1.75 [44]	.53 [13]	4.77 [121]	.63 [16]	.18 [4]												
YA34L2NT38	2	500 kcmil	240	3/8"	1.06 [27]	1.27 [32]	.96 [24]	1.82 [46]	1.00 [25]	.41 [10]	3.65 [93]	.41 [10]	.23 [6]	Y644HS(1) Y81KFT(1) Y81KFTMBH(1) PAT81KFT-18V(1) PAT644 (1) PAT444 (1)	W34VT(4)	W34VT(4)	U34RT(2)	U34RT(2)	U34RT(2)	C34R(1)	L34RT(1)	BROWN	20 OR 22	1-7/16"	
YA34L2NT38E16	2			3/8"	1.06 [27]	1.27 [32]	.96 [24]	2.58 [66]	1.75 [44]	.41 [10]	4.63 [117]	.41 [10]	.23 [6]												
YA34L2NT12E1	2			1/2"	1.06 [27]	1.27 [32]	.96 [24]	2.08 [53]	1.00 [25]	.53 [13]	4.13 [105]	.53 [13]	.23 [6]												
YA36L2NNT	2	600 kcmil	300	1/2"	1.19 [30]	1.38 [35]	1.12 [28]	3.00 [76]	1.75 [44]	.53 [13]	5.43 [138]	.63 [16]	.27 [6]	----	----	U36RT(2)	U36RT(2)	U36RT(2)	C36R(1)	L36RT(1)	GREEN	472	1-3/4"		
YA39L2NT38	2	750 kcmil	--	3/8"	1.30 [33]	1.42 [36]	1.63 [41]	2.06 [52]	1.00 [25]	.41 [10]	4.34 [110]	.50 [13]	.27 [6]	Y644HS(1) Y81KFT(1) Y81KFTMBH(1) PAT81KFT-18V(1) PAT644 (1) PAT444 (1)	W34VT(4)	W34VT(4)	U34RT(2)	U34RT(2)	U34RT(2)	C34R(1)	L34RT(1)	BROWN	20 OR 22	1-7/16"	
YA39L2NT38E16	2			3/8"	1.30 [33]	1.42 [36]	1.30 [33]	2.78 [71]	1.75 [44]	.41 [10]	5.11 [130]	.50 [13]	.27 [6]												
YA39L2NT12E1	2			1/2"	1.30 [33]	1.42 [36]	1.30 [33]	2.08 [53]	1.00 [25]	.53 [13]	4.42 [112]	.53 [13]	.27 [6]												

TOLERANCE BLOCK							
CONNECTOR SIZE	TOLERANCES						
	B	C	E	K DIA.	L	N	O.D.
-8C THRU -25	±.06	±.04	±.02	±.02	±.09	±.03	±.01
-26 THRU -34	±.08	±.04	±.02	±.02	±.12	±.03	±.01
-35 AND UP	±.09	±.06	±.02	±.02	±.15	±.06	±.01

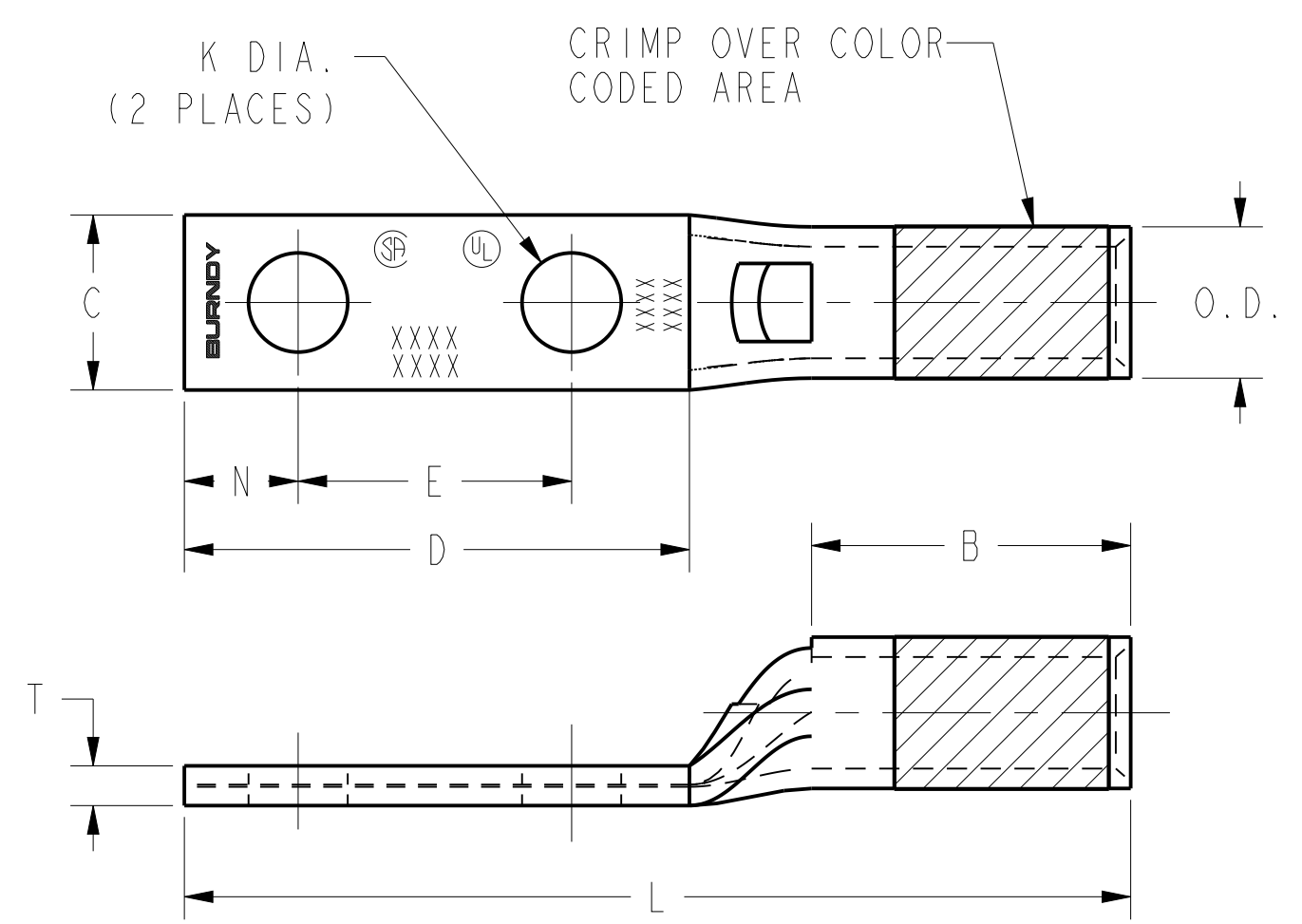


FIG. 2

NOTES:
 1. MATERIAL: COPPER TUBING.
 2. FINISH: TIN PLATED.
 3. DIMENSIONS IN BRACKETS [] ARE IN MILLIMETERS ROUNDED OFF TO THE NEAREST MILLIMETER, UNLESS OTHERWISE NOTED, AND ARE FOR REFERENCE ONLY.
 4. INSTALLATION TOOLING AND DIES ARE CONSTANTLY BEING UPDATED. FOR THE LATEST INSTALLATION TOOLING INFORMATION REFER TO THE MASTER CATALOG ON THE BURNDY WEBSITE.

REV	DATE	DESCRIPTION	ECO	BY	C'K
AB	2021-05-27 00:00:00 EDT	UPDATED D MIN, L & N DIMENSIONS FOR YA26LNT38	210521008417	JL	RR

HYLUG™ COPPER (NARROW TONGUE)	
ITEM NO:	N/A
CAT. NO:	YA-L-NT-(TABLE)
DRAWN BY:	AUGUSTIN.S 07/03/10
CHECKER:	--
DSN APPVL:	J MICHAUD 06/11/11
MFG APPVL:	T THRELFALL 06/23/11
QA APPVL:	T WATTS 06/13/11
MKT APPVL:	J SYLVIA 06/13/11
PROD FAM:	CM&R COMPRESSION
PROJECT #:	--
DOCUMENT TYPE:	Sales
REL LEVEL:	Released

SCALE: 3:1	DRAWING NO: 30003952	REV: AB
SIZE: D	SHEET 4 OF 12	

REV: CREO 05/20/21

DRAWING NO. 30003952	7			6				5				4				3				2		1		
	CATALOG NUMBER	FIG. NO.	CONDUCTOR		STUD HOLE SIZE	DIMENSIONS							DIELESS (# OF CRIMPS)	INSTALLATION TOOLING										WIRE STRIP LENGTH
			AWG	MM ²		O.D.	B	C	D MIN.	K DIA.	L	N		T	MECHANICAL		HYDRAULIC							
YAV4CLNT10FX	3	4 AWG CLASS B,C FLEX CLASS G,H,I,K,M DLO 105/24	---	#10	.38 [10]	.50 [13]	.41 [10]	.52 [13]	.21 [5]	1.32 [34]	.25 [6]	.09 [2]	MY29-11(1) Y1MRTC(2) Y81KFT(1) Y122CMR (2) PAT81KFT-18V(1)	W4CRT(1) X4CRT(1) W4CVT(1)	W4CRT(1) W4CVT(1) X4CRT(1)	U4CRT(1)	U4CRT(1)	U4CRT(1)	--	--	GRAY	8	1/2"	
YAV2CLNT14FX	3	2 AWG CLASS B,C FLEX CLASS G,H,I,K,M DLO 150/24	35	1/4"	.46 [12]	.63 [16]	.46 [12]	.64 [16]	.27 [7]	1.71 [43]	.31 [8]	.10 [3]	Y1MRTC(2) MY29-11(1) Y81KFT(1) Y644(1) Y444(1)	W2CVT(1) W2CRT(1) X2CRT(1)	W2CVT(1) W2CRT(1) X2CRT(1)	U2CRT(1)	U2CRT(1)	U2CRT(1)	--	--	BROWN	10	11/16"	
YAV2CLNT516FX	3			5/16"	.46 [12]	.63 [16]	.44 [11]	.70 [18]	.33 [8]	1.78 [45]	.34 [9]	.10 [3]												
YAV25LNT14FX	3	1/0 AWG CLASS B,C FLEX CLASS G,H,I,K,M DLO 275/24	50	1/4"	.56 [14]	.69 [18]	.67 [17]	.64 [16]	.27 [7]	1.75 [44]	.31 [8]	.12 [3]												
YAV25LNT516FX	3			5/16"	.56 [14]	.69 [18]	.67 [17]	.70 [18]	.33 [8]	1.81 [46]	.34 [9]	.12 [3]												
YAV25LNT38FX	3			3/8"	.56 [14]	.69 [18]	.76 [19]	.83 [21]	.41 [10]	1.94 [49]	.41 [10]	.13 [3]												
YAV26LNT516FX	3	2/0 AWG CLASS B,C FLEX CLASS G,H,I,K,M DLO 325/24	70	5/16"	.63 [16]	.81 [21]	.87 [22]	.70 [18]	.33 [8]	1.98 [50]	.34 [9]	.13 [3]												
YAV26LNT38FX	3			3/8"	.63 [16]	.81 [21]	.87 [22]	.83 [21]	.41 [10]	2.11 [54]	.41 [10]	.13 [3]	MY29-11(1) Y81KFT(1) PAT81KFT(1) Y644(1) PAY644(1) Y444(1) PAT444(1)	W26VT(2) W26RT(2) X26RT(2)	W26VT(2) W26RT(2) X26RT(2)	U26RT(1)	U26RT(1)	U26RT(1)	--	--	BLACK	13	13/16"	
YAV26LNT12FX	3			1/2"	.63 [16]	.81 [21]	.87 [22]	1.08 [27]	.53 [13]	2.36 [60]	.53 [13]	.13 [3]												
YAV28LNT516FX	3	4/0 AWG CLASS B,C FLEX CLASS G,H,I,K,M DLO 550/24	---	5/16"	.77 [20]	1.03 [26]	.94 [24]	.70 [18]	.33 [8]	2.29 [58]	.34 [9]	.15 [4]												
YAV28LNT38FX	3			3/8"	.77 [20]	1.03 [26]	.94 [24]	.83 [21]	.41 [10]	2.42 [61]	.41 [10]	.15 [4]												
YAV28LNT12FX	3			1/2"	.77 [20]	1.03 [26]	.76 [19]	1.08 [27]	.53 [13]	2.67 [68]	.53 [13]	.15 [4]												
YAV28LNT14FX	3			1/4"	.77 [20]	1.03 [26]	.76 [19]	.62 [16]	.27 [7]	2.23 [56]	.31 [8]													
YA30LNT516FX	3	250 FLEX CLASS G: 259 STR CLASS H: 427 STR 4/0 FLEX CLASS I: 532 STR CLASS K: 2107 STR CLASS M: 5320 STR DLD, 550/24	---	5/16"	.81 [21]	1.03 [26]	.96 [24]	.72 [18]	.33 [8]	2.49 [63]	.34 [9]	.16 [4]	Y81KFT(1) PAT81KFT(1) Y644(1) PAY644(1) Y444(1) PAT444(1)	W29VT(2)	W29VT(1)	U29RT(1)	U29RT(1)	U29RT(1)	--	--	YELLOW	16	1-1/8"	
YA30LNT38FX	3			3/8"				1.20 [30]	.41 [10]	2.97 [75]	.41 [10]													
YA31LNT12FX	3	250 FLEX DLO 650/24 CLASS I,K,M	150	1/2"	.88 [22]	1.06 [27]	.96 [24]	1.20 [30]	.53 [13]	2.75 [70]	.53 [13]	.18 [4]		W30VT(2)	W30VT(2) W30RT(2)	U30RT(2)	U30RT(2)	U30RT(2)	C30R(1)	L30RT(1)	WHITE	17	1-1/8"	

TOLERANCE BLOCK							
CONNECTOR SIZE	TOLERANCES						
	B	C	E	K DIA.	L	N	O.D.
-8C THRU -25	±.06	±.04	±.02	±.02	±.09	±.03	±.01
-26 THRU -34	±.08	±.04	±.02	±.02	±.12	±.03	±.01
-35 AND UP	±.09	±.06	±.02	±.02	±.15	±.06	±.01

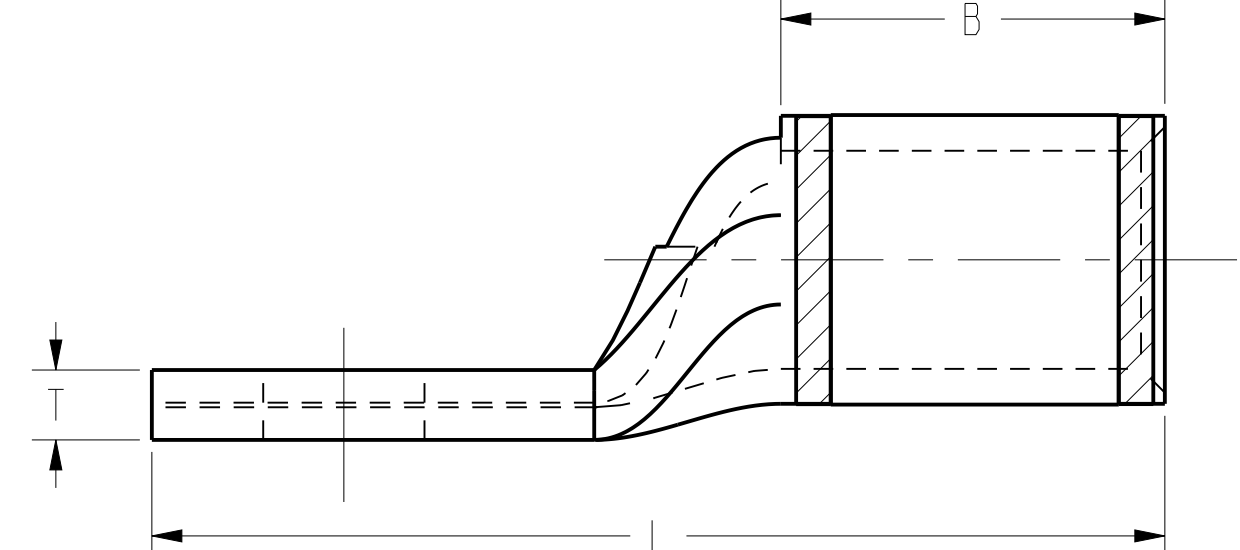
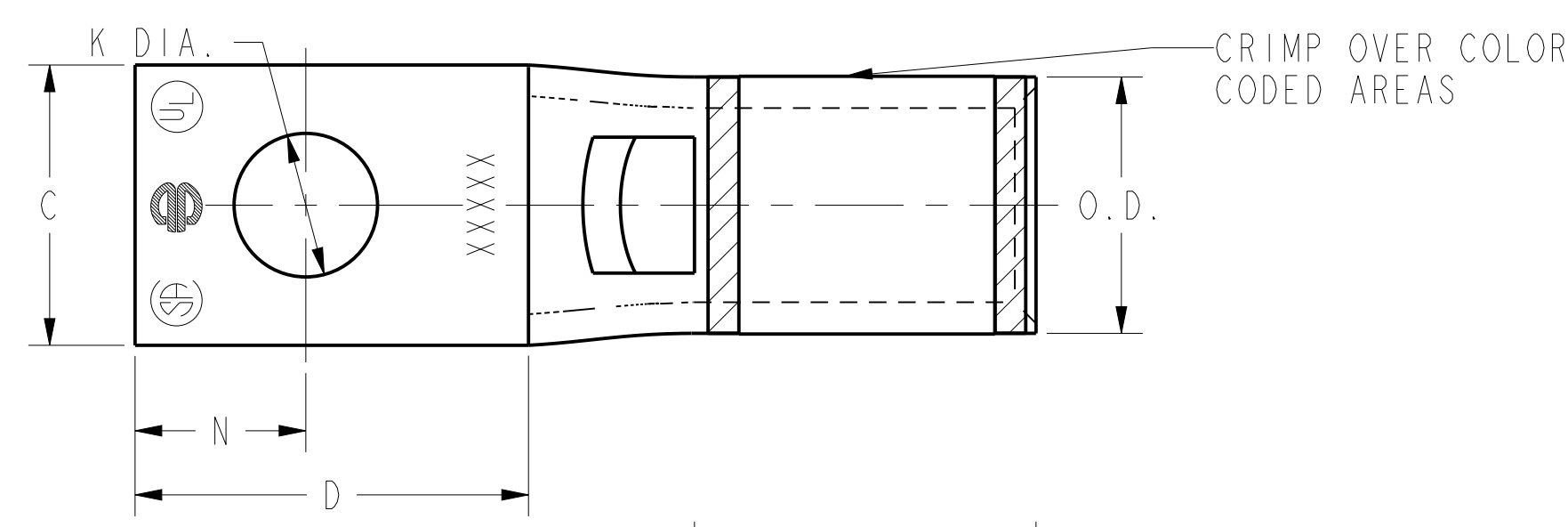


FIG. 3

- NOTES:
- MATERIAL: COPPER TUBING.
 - FINISH: TIN PLATED.
 - DIMENSIONS IN BRACKETS [] ARE IN MILLIMETERS ROUNDED OFF TO THE NEAREST MILLIMETER, UNLESS OTHERWISE NOTED, AND ARE FOR REFERENCE ONLY.
 - INSTALLATION TOOLING AND DIES ARE CONSTANTLY BEING UPDATED. FOR THE LATEST INSTALLATION TOOLING INFORMATION REFER TO THE MASTER CATALOG ON THE BURNDY WEBSITE.

5 YA30LNT-FX IS NOT UL/CSA LISTED USING ANY CLASS OF 4/0 FLEX COPPER CONDUCTOR.

REV	DATE	DESCRIPTION	ECO	BY	C'H'K.
AB	2021-05-27 00:00:00 EDT	UPDATED D MIN, L & N DIMENSIONS FOR YA26LNT38	210521008417	JL	RR

HYLUG™ COPPER (NARROW TONGUE)

ITEM NO: N/A

CAT. NO: YA-L-NT-(TABLE)

DRAWN BY: AUGUSTIN.S 07/03/10

CHECKER: --

DSN APPVL: J MICHAUD 06/11/11

MFG APPVL: T THRELFALL 06/23/11

QA APPVL: T WATTS 06/13/11

MKT APPVL: J SYLVIA 06/13/11

PROD FAM: CM&R COMPRESSION

SCALE: 3:1

DRAWING NO: 30003952

PROJECT #: --

SIZE: D

DOCUMENT TYPE: Sales

REL LEVEL: Released

SHEET 5 OF 12

AB

REV: CREO_05/20/21

CATALOG NUMBER	FIG. NO.	CONDUCTOR		STUD HOLE SIZE	DIMENSIONS								DIELESS (# OF CRIMPS)	INSTALLATION TOOLING										WIRE STRIP LENGTH
		AWG	MM ²		O.D.	B	C	D MIN.	K DIA.	L	N	T		MECHANICAL		HYDRAULIC								
														MD6, OUR840, MD7-34R	BCT500HS, Y500CTHS	Y35, Y39, Y750, PAT750	Y46 PAT46	Y45	Y48	Y60	COLOR CODE	DIE INDEX		
YA32LNT516FX	3	313.1 kcmil 775/24 300 FLEX	185	5/16"	.95 [24]	1.19 [30]	.96 [24]	.70 [18]	.33 [8]	2.65 [65]	.34 [9]	.19 [5]	Y644HS(1) Y81KFT(1) Y81KFTMBH(1) PAT81KFT-18V(1) PAT644 (1) PAT444 (1)	W31VT(2)	W31VT(2) W31RT(2)	U31RT(2)	U31RT(2)	U31RT(2)	C31R(1)	L31RT(1)	RED	18	1-1/4"	
YA32LNT38FX	3			3/8"	.95 [24]	1.19 [30]	.96 [24]	.83 [21]	.41 [10]	2.68 [68]	.41 [10]	.19 [5]												
YA32LNT12FX	3			1/2"	.95 [24]	1.19 [30]	.96 [24]	1.05 [27]	.52 [13]	2.93 [74]	.53 [13]	.19 [5]												
YA34LNT38FX	3	373.7 kcmil 925/24 350 FLEX	240	3/8"	1.06 [27]	1.27 [32]	.96 [24]	.85 [22]	.41 [10]	2.87 [73]	.41 [10]	.23 [6]	Y644HS(1) Y81KFT(1) Y81KFTMBH(1) PAT81KFT-18V(1) PAT644 (1) PAT444 (1)	W32VT(2)	W32VT(2) W32RT(2)	U32RT(2)	U32RT(2)	U32RT(2)	C32R(2)	L32RT(1)	BLUE	19	1-5/16"	
YA34LNT12FX	3			1/2"	1.06 [27]	1.27 [32]	.96 [24]	1.10 [28]	.53 [13]	3.12 [79]	.53 [13]	.23 [6]												
YA38LNT12FX	3	535.3 kcmil 1325/24 500 FLEX	300	1/2"	1.25 [32]	1.45 [37]	1.63 [41]	1.08 [27]	.53 [13]	3.41 [87]	.53 [13]	.27 [7]	Y644HS(1) Y81KFT(1) Y81KFTMBH(1) PAT81KFT-18V(1) PAT644 (1) PAT444 (1)	---	---	U38XRT(2)	U38XRT(2)	U38XRT(2)	---	L38RT(1)	PINK	L99	1-7/16"	
YA38LNTM20FX	3			M20	1.25 [32]	1.45 [37]	1.63 [41]	1.51 [38]	.85 [22]	3.84 [98]	.75 [19]	.27 [7]												
YA44LNT38FX	3	777.7 kcmil 1925/24 750 FLEX	500	3/8"	1.50 [38]	1.65 [42]	1.50 [38]	1.20 [30]	.41 [10]	3.79 [96]	.53 [13]	.33 [8]	Y644HS(1) Y81KFT(2) Y81KFTMBH(2) PAT81KFT-18V(2) PAT644 (1) PAT444 (1)	---	---	U44ZRT(2)	U44ZRT(2)	U44ZRT(2)	C44R(1)	L44RT(1)	YELLOW	L115	1-5/8"	
YA44LNT12FX	3			1/2"	1.50 [38]	1.65 [42]	1.62 [41]	1.26 [32]	.56 [14]	3.98 [101]	.62 [16]	.33 [8]												
YA44LNT58FX	3			5/8"	1.50 [38]	1.65 [42]	1.50 [38]	1.30 [33]	.69 [18]	4.04 [103]	.66 [17]	.33 [8]												

TOLERANCE BLOCK							
CONNECTOR SIZE	TOLERANCES						
	B	C	E	K DIA.	L	N	O.D.
-8C THRU -25	±.06	±.04	±.02	±.02	±.09	±.03	±.01
-26 THRU -34	±.08	±.04	±.02	±.02	±.12	±.03	±.01
-35 AND UP	±.09	±.06	±.02	±.02	±.15	±.06	±.01

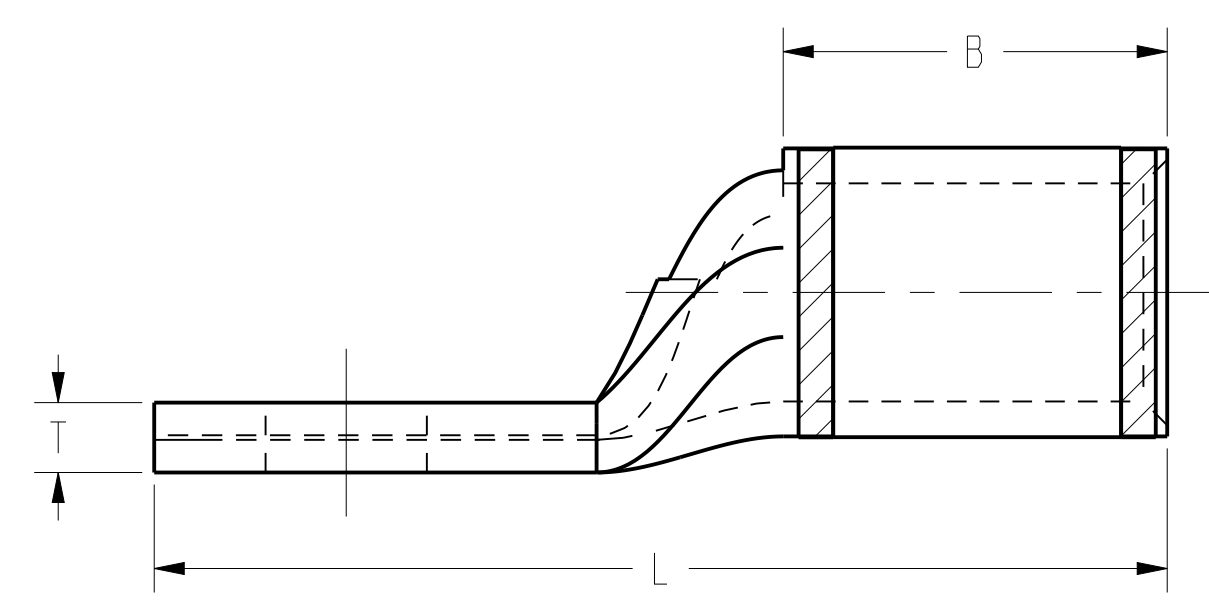
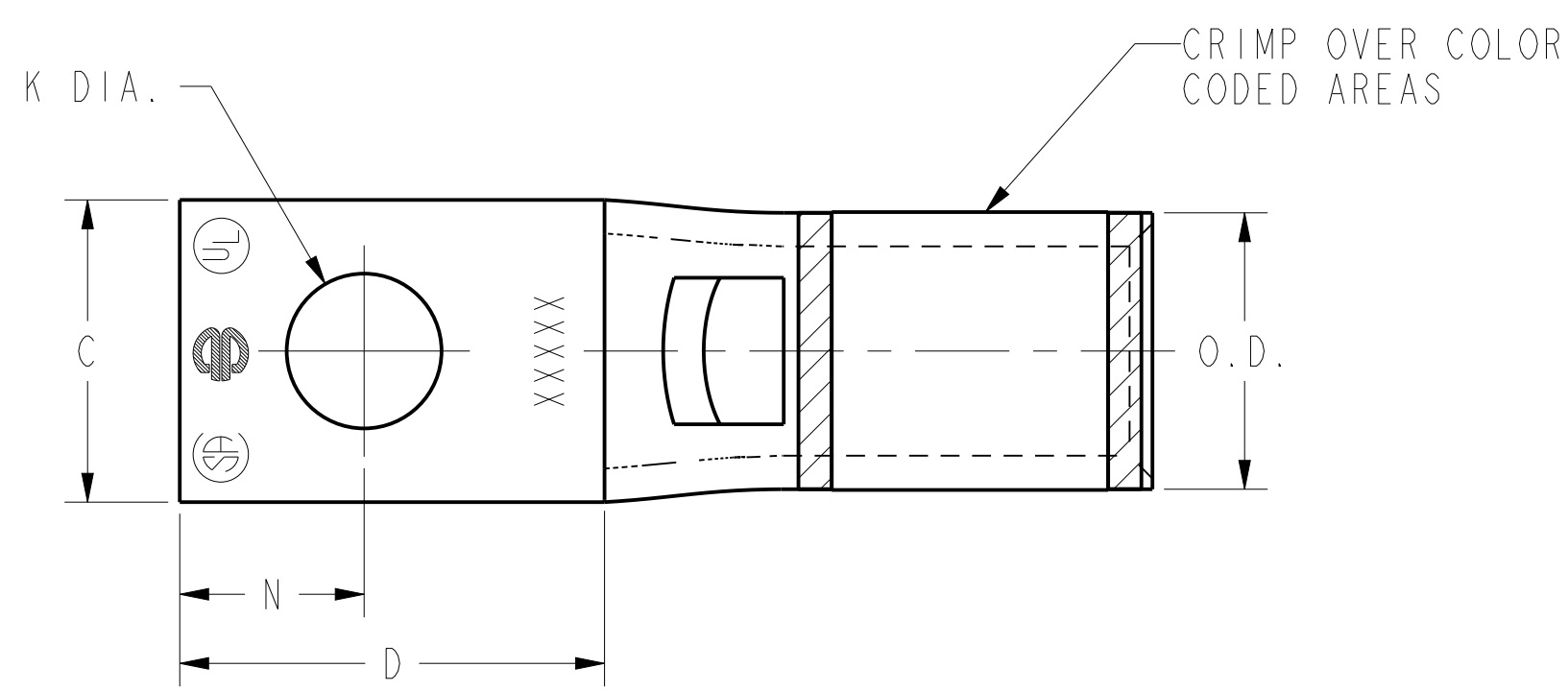


FIG. 3

NOTES:
 1. MATERIAL: COPPER TUBING.
 2. FINISH: TIN PLATED.
 3. DIMENSIONS IN BRACKETS [] ARE IN MILLIMETERS ROUNDED OFF TO THE NEAREST MILLIMETER, UNLESS OTHERWISE NOTED, AND ARE FOR REFERENCE ONLY.
 4. INSTALLATION TOOLING AND DIES ARE CONSTANTLY BEING UPDATED. FOR THE LATEST INSTALLATION TOOLING INFORMATION REFER TO THE MASTER CATALOG ON THE BURNDY WEBSITE.

REV	DATE	DESCRIPTION	ECO	BY	C'K'
AB	2021-05-27 00:00:00 EDT	UPDATED D MIN, L & N DIMENSIONS FOR YA26LNT38	210521008417	JL	RR

HYLUG™ COPPER (NARROW TONGUE)

ITEM NO: N/A
 CAT. NO: YA-L-NT-(TABLE)
 DRAWN BY: AUGUSTIN.S 07/03/10
 CHECKER: --
 DSN APPVL: J MICHAUD 06/11/11
 MFG APPVL: T THRELFALL 06/23/11
 QA APPVL: T WATTS 06/13/11
 MKT APPVL: J SYLVIA 06/13/11

SCALE: 3:1

PROD FAM: CM&R COMPRESSION
 DRAWING NO: 30003952
 PROJECT #: --
 DOCUMENT TYPE: Sales
 REL LEVEL: Released

30003952
 SHEET 6 OF 12

AB

REV: CREO 05/20/21

DRAWING NO. 30003952	7	6	5	4	3	2	1	CATALOG NUMBER	FIG. NO.	CONDUCTOR		STUD HOLE SIZE	DIMENSIONS											INSTALLATION TOOLING										WIRE STRIP LENGTH	
										AWG	MM ²		O.D.	B	C	D MIN.	E	K DIA.	L	N	T	DIELESS (# OF CRIMPS)	MECHANICAL		HYDRAULIC								COLOR CODE		DIE INDEX
																							MD6, OUR840, MD7-34R	BCT500HS, Y500CTHS	Y35, Y39, Y750, PAT750	Y46 PAT46	Y45	Y48	Y60						
YAV29L2NT38FX	4	4/0 AWG 4/0 WELD 550/24	---	3/8"	.80 [20]	1.03 [26]	.94 [24]	1.84 [47]	1.00 [25]	.41 [10]	3.43 [87]	.41 [10]	.16 [4]	Y644 (1) PAT644 (1) PAT444 (1) Y81KFT (1) PAT81KFT (1)	W29VT(2) X29RT(4)	W29VT(2) W29RT(2) X29RT(4)	U29RT(1)	U29RT(1)	U29RT(1)	C29R(1)	L29RT(1)	YELLOW	16	1-1/16"											
YA31L2NT38FX	4	250 FLEX 637/24 CLASS I, K, M	150	3/8"	.88 [22]	1.06 [27]	.96 [24]	1.84 [47]	1.00 [25]	.41 [10]	3.51 [89]	.41 [10]	.18 [4]		W30VT(2)	W30VT(2) W30RT(2)	U30RT(2)	U30RT(2)	U30RT(2)	C30R(2)	L30RT(1)	WHITE	17	1-1/8"											
YA32L2NT38FX	4	313.1 kcmil 775/24 300 FLEX	185	3/8"	.95 [24]	1.19 [30]	.96 [24]	1.84 [47]	1.00 [25]	.41 [10]	3.69 [94]	.41 [10]	.20 [5]		W31VT(2)	W31VT(2) W31RT(2)	U31RT(2)	U31RT(2)	U31RT(2)	C31R(2)	L31RT(1)	RED	18	1-1/4"											
YA34L2NT38FX	4	373.7 kcmil 925/24 350 FLEX	240	3/8"	1.06 [27]	1.27 [32]	.96 [24]	2.58 [66]	1.00 [25]	.41 [10]	3.88 [99]	.41 [10]	.23 [6]		W32VT(2)	W32VT(2) W32RT(2)	U32RT(2)	U32RT(2)	U32RT(2)	C32R(2)	L32RT(1)	BLUE	19	1-5/16"											
YA36L2ENT38E10FX	4	444.4 kcmil 1100/24 450 FLEX	---	3/8"	1.19 [30]	1.38 [35]	1.50 [38]	2.30 [58]	1.25 [32]	.41 [10]	4.49 [114]	.50 [13]	.27 [7]		----	----	U34RT(2)	U34RT(2)	U34RT(2)	C34R(1)	L34RT(1)	BROWN	20	1-7/16"											
YA36L2NT38FX	4			3/8"	1.19 [30]	1.38 [35]	1.63 [41]	2.03 [51]	1.00 [25]	.41 [10]	4.24 [108]	.50 [13]	.27 [7]		----	----	U38XRT(2)	U38XRT(2)	U38XRT(2)	--	L38RT(1)	PINK	L99	1-7/16"											
YA38L2ENT38FX	4	535.3 kcmil 1325/24 500 FLEX	300	3/8"	1.25 [32]	1.45 [37]	1.50 [38]	2.03 [51]	1.00 [25]	.41 [10]	4.35 [110]	.50 [13]	.27 [7]		----	----	U39RT(2)	U39RT(2)	U39RT(2)	C39R(1)	L39RT(1)	BLACK	24	1-5/16"											
YA38L2NT38FX	4			3/8"	1.25 [32]	1.45 [37]	1.63 [41]	2.03 [51]	1.00 [25]	.41 [10]	4.35 [110]	.50 [13]	.27 [7]		----	----	U44XRT(2)	U44XRT(2)	U44XRT(2)	C44R(1)	L44RT(1)	YELLOW	L115	1-5/8"											
YA38L2NNTFX	4			1/2"	1.25 [32]	1.45 [37]	1.63 [41]	3.03 [77]	1.75 [44]	.56 [14]	5.35 [136]	.63 [16]	.27 [7]		----	----	U39RT(2)	U39RT(2)	U39RT(2)	C39R(1)	L39RT(1)	BLACK	24	1-5/16"											
YA40L2NNTFX	4	646 kcmil 1600/24 650 FLEX	400	1/2"	1.35 [34]	1.42 [36]	1.63 [41]	3.03 [77]	1.75 [44]	.56 [14]	5.38 [137]	.63 [16]	.30 [8]		----	----	U44XRT(2)	U44XRT(2)	U44XRT(2)	C44R(1)	L44RT(1)	YELLOW	L115	1-5/8"											
YA44L2NNTFX	4	777.7 kcmil 1925/24 750 FLEX	500	1/2"	1.50 [38]	1.65 [42]	1.63 [41]	3.03 [77]	1.75 [44]	.56 [14]	5.74 [146]	.63 [16]	.33 [8]	----	----	U44XRT(2)	U44XRT(2)	U44XRT(2)	C44R(1)	L44RT(1)	YELLOW	L115	1-5/8"												
YA44L2NT38FX	4			3/8"	1.50 [38]	1.65 [42]	1.63 [41]	2.03 [51]	1.00 [25]	.41 [10]	4.74 [120]	.50 [13]	.33 [8]	----	----	P44RT(2)	S44RT(2)	C44R(1)	L44RT(1)	WHITE	27	2-1/16"													
YA45L2NT38FX	4	929 kcmil 2300/24	---	3/8"	1.69 [43]	2.00 [51]	1.70 [43]	2.02 [51]	1.00 [25]	.41 [10]	5.18 [132]	.50 [13]	.38 [10]	----	----	----	----	----	C44R(1)	L44RT(1)	WHITE	27	2-1/16"												

B

TOLERANCE BLOCK							
CONNECTOR SIZE	TOLERANCES						
	B	C	E	K DIA.	L	N	O.D.
-8C THRU -25	±.06	±.04	±.02	±.02	±.09	±.03	±.01
-26 THRU -34	±.08	±.04	±.02	±.02	±.12	±.03	±.01
-35 AND UP	±.09	±.06	±.02	±.02	±.15	±.06	±.01

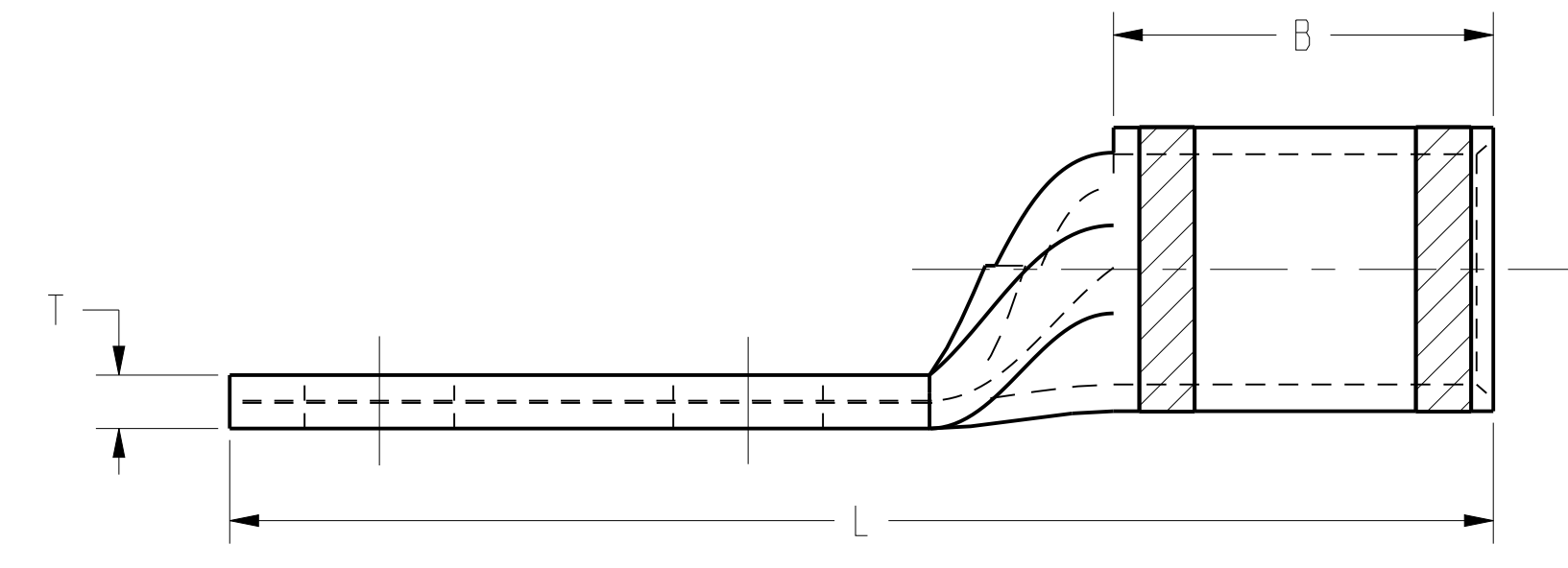
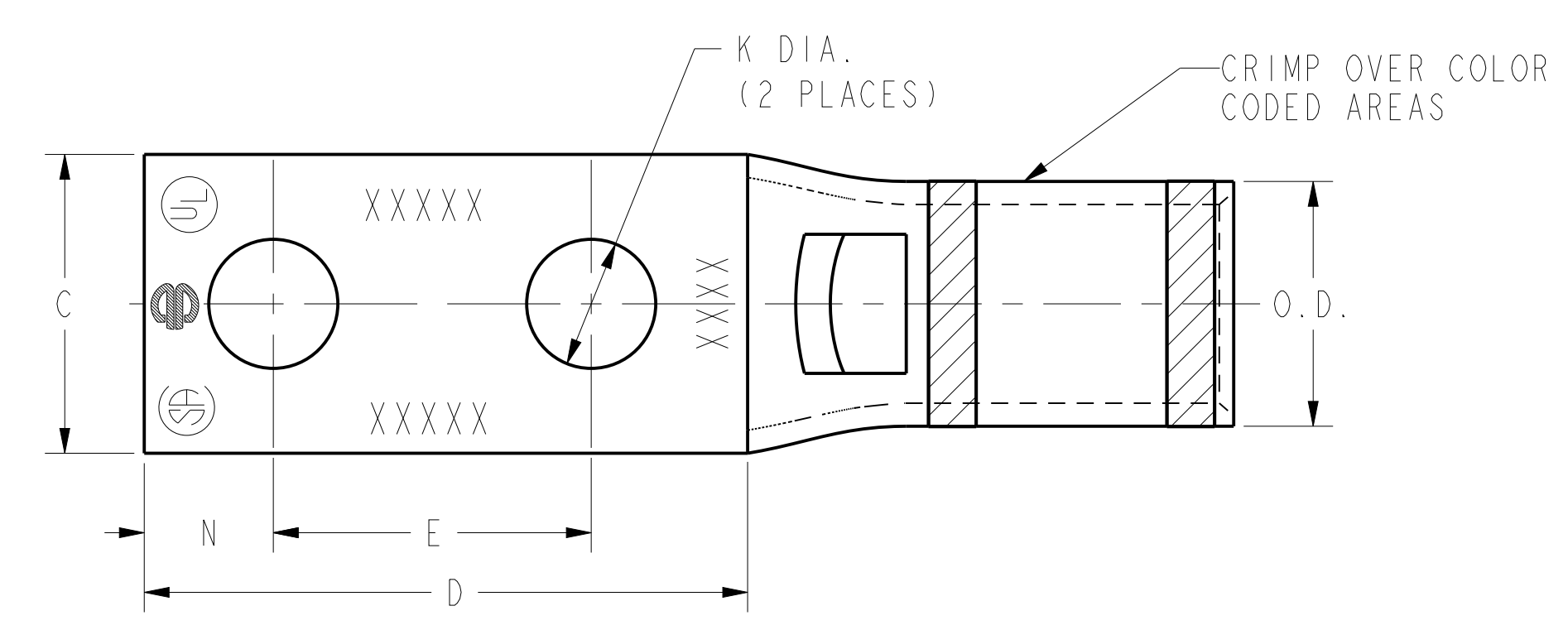


FIG. 4

A

- NOTES:
- MATERIAL: COPPER TUBING.
 - FINISH: TIN PLATED.
 - DIMENSIONS IN BRACKETS [] ARE IN MILLIMETERS ROUNDED OFF TO THE NEAREST MILLIMETER, UNLESS OTHERWISE NOTED, AND ARE FOR REFERENCE ONLY.
 - INSTALLATION TOOLING AND DIES ARE CONSTANTLY BEING UPDATED. FOR THE LATEST INSTALLATION TOOLING INFORMATION REFER TO THE MASTER CATALOG ON THE BURNDY WEBSITE.

REV	DATE	DESCRIPTION	ECO	BY	C'H'K.
AB	2021-05-27 00:00:00 EDT	UPDATED D MIN, L & N DIMENSIONS FOR YA26LNT38	210521008417	JL	RR

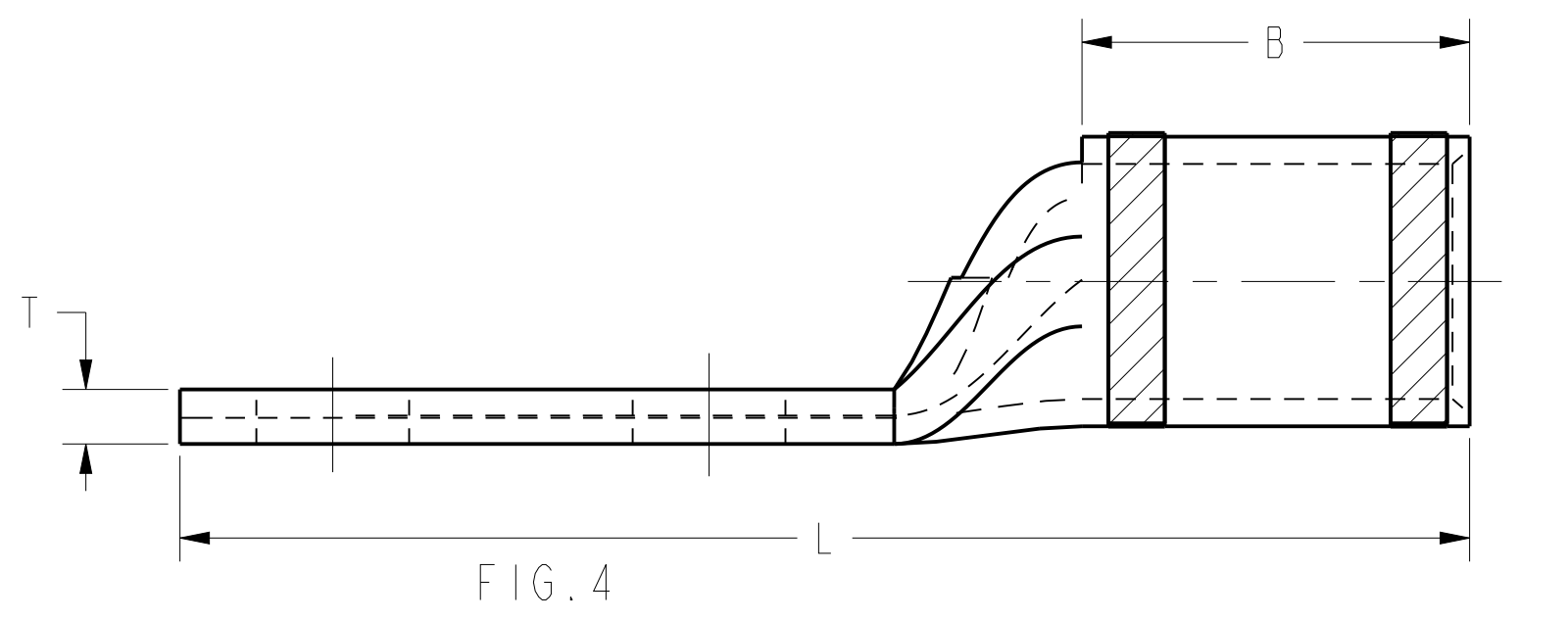
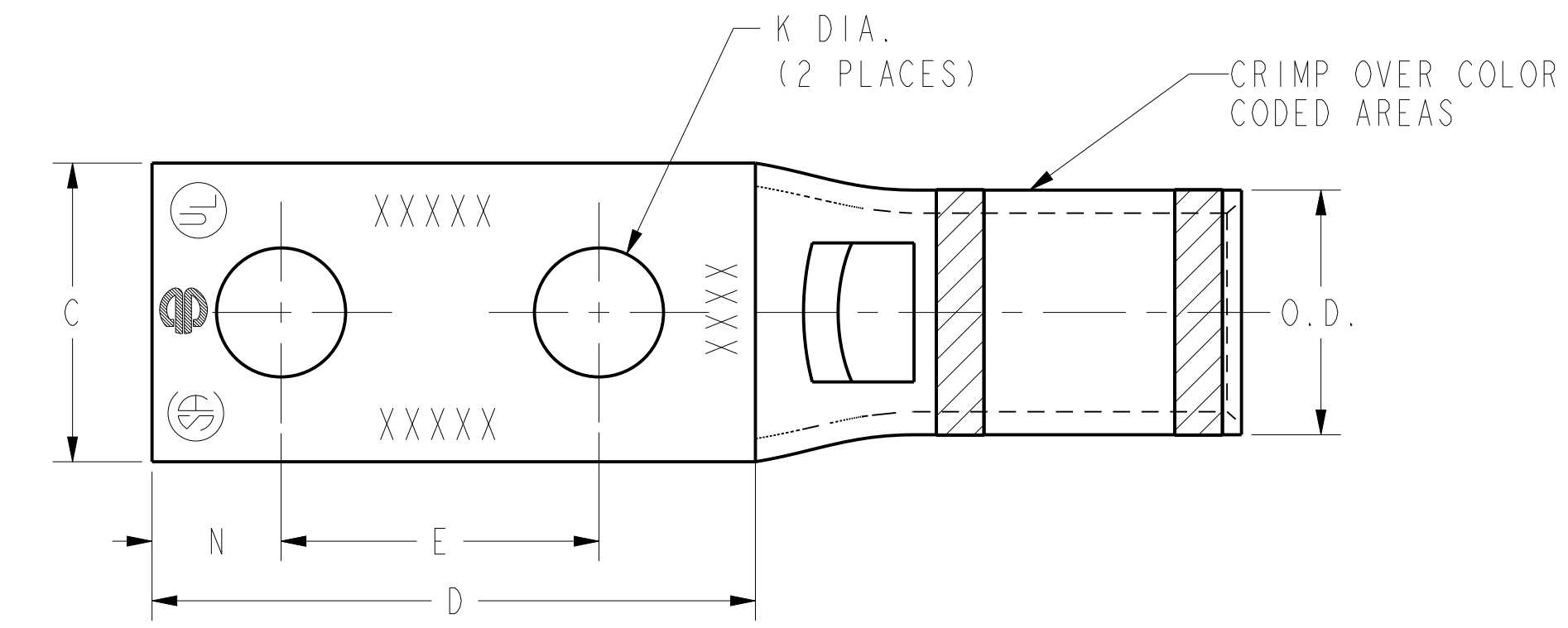
HYLUG™ COPPER (NARROW TONGUE)	
ITEM NO:	N/A
CAT. NO:	YA-L-NT-(TABLE)
DRAWN BY:	AUGUSTIN.S 07/03/10
CHECKER:	--
DSN APPVL:	J MICHAUD 06/11/11
MFG APPVL:	T THRELFALL 06/23/11
QA APPVL:	T WATTS 06/13/11
MKT APPVL:	J SYLVIA 06/13/11
PROD FAM:	CM&R COMPRESSION
PROJECT #:	--
DOCUMENT TYPE:	Sales
REL LEVEL:	Released

SCALE: 3:1	DRAWING NO: 30003952	REV: AB
SIZE: D	SHEET 7 OF 12	

REV: CREO 05/20/21

DRAWING NO. 30003952	7	6	5	4	3	2	1	INSTALLATION TOOLING																					
								CATALOG NUMBER	FIG. NO.	CONDUCTOR		STUD HOLE SIZE	DIMENSIONS							DIELESS (# OF CRIMPS)	MECHANICAL		HYDRAULIC						WIRE STRIP LENGTH
										AWG	MM ²		O.D.	B	C	D MIN.	E	K DIA.	L		N	T	MD6, OUR840, MD7-34R	BCT500HS, Y500CTHS	Y35, Y39, Y750 PAT750	Y46 PAT46	Y45	Y48	
YAV4CL2NT10E1FX	4	#4 AWG #4 WELD 91/24 105/24	---	#10	.38 [10]	.50 [13]	.41 [10]	1.52 [37]	1.00 [25]	.21 [5]	2.33 [59]	.25 [6]	.09 [2]	Y122CMR (2) MY29-11(1) Y1MRTC(2) Y81KFT(1) Y81KFTMBH(1) PAT81KFT-18V(1)	W4CVT(1) W4CRT(1) X4CRT(1)	W4CVT(1) W4CRT(1) X4CRT(1)	U4CRT(1)	U4CRT(1)	U4CRT(1)	---	---	GRAY	8	9/16"					
YAV4CL2NT10E2FX	4				.38 [10]	.50 [13]	.41 [10]	1.52 [37]	.75 [19]	.21 [5]	2.08 [53]	.25 [6]	.09 [2]																
YAV4CL2NT10FX	4				.38 [10]	.50 [13]	.41 [10]	1.15 [29]	.63 [16]	.21 [5]	1.95 [50]	.25 [6]	.09 [2]																
YAV4CL2NT14FX	4				1/4"	.38 [10]	.50 [13]	.45 [11]	1.26 [32]	.63 [16]	.27 [7]	2.08 [53]	.31 [8]												.09 [2]				
YAV2CL2NT10FX	4	#2 AWG #2 WELD 125/24 150/24	35	#10	.46 [12]	.63 [16]	.48 [12]	1.15 [29]	.63 [16]	.21 [5]	2.14 [54]	.25 [6]	.10 [3]	Y122CMR (2) MY29-11(1) Y1MRTC(2) Y81KFT(1) PAT644 (1) PAT81KFT-18V(1) PAT444 (1)	W2CVT(1) W2CRT(1) X2CRT(1)	W2CVT(1) W2CRT(1) X2CRT(1)	U2CRT(1)	U2CRT(1)	U2CRT(1)	---	---	BROWN	10	11/16"					
YAV2CL2NT14E1FX	4				1/4"	.46 [12]	.63 [16]	.48 [12]	1.65 [42]	1.00 [25]	.27 [7]	2.63 [67]	.31 [8]												.10 [3]				
YAV2CL2NT14FX	4				1/4"	.46 [12]	.63 [16]	.48 [12]	1.28 [33]	.63 [16]	.27 [7]	2.26 [57]	.31 [8]												.10 [3]				
YAV1CL2NT14FX	4	#1 AWG #1 WELD 175/24 225/24	---	1/4"	.51 [13]	.62 [16]	.50 [13]	1.28 [33]	.63 [16]	.27 [7]	2.28 [58]	.31 [8]	.12 [3]	W1CVT(1) W1CRT-1(1) X1CRT-1(1)	W1CVT(1) W1CRT-1(1) X1CRT-1(1)	U1CRT-1(1)	U1CRT-1(1)	U1CRT-1(1)	---	---	GREEN	11	11/16"						
YAV1CL2NT516FX	4				5/16"	.51 [13]	.63 [16]	.58 [15]	1.70 [43]	1.00 [25]	.33 [8]	2.72 [69]	.34 [9]											.12 [3]					
YAV25L2NT14E1FX	4	1/0 AWG 1/0 WELD 275/24	50	1/4"	.56 [14]	.69 [18]	.64 [16]	1.65 [42]	1.00 [25]	.27 [7]	2.76 [70]	.31 [8]	.12 [3]	MY2911 (1) Y81KFT (1) PAT81KFT (1) Y644 (1) PAT644 (1) PAT444 (1)	W25VT(2) W25RT(2) X25RT(2)	W25VT(2) W25RT(2) X25RT(2)	U25RT(1)	U25RT(1)	U25RT(1)	---	---	PINK	12	11/16"					
YAV25L2NT14FX	4				1/4"	.56 [14]	.69 [18]	.64 [16]	1.28 [33]	.63 [16]	.27 [7]	2.39 [61]	.31 [8]												.12 [3]				
YAV25L2NT516FX	4				5/16"	.56 [14]	.69 [18]	.58 [15]	1.71 [44]	1.00 [25]	.33 [8]	2.82 [72]	.34 [9]												.12 [3]				
YAV26L2NT14FX	4	2/0 AWG 2/0 WELD 325/24	70	1/4"	.63 [16]	.81 [21]	.76 [19]	1.28 [33]	.63 [16]	.27 [7]	2.56 [65]	.31 [8]	.13 [3]	W26VT(2) W26RT(2) X26RT(2)	W26VT(2) W26RT(2) X26RT(2)	U26RT(1)	U26RT(1)	U26RT(1)	---	---	BLACK	13	13/16"						
YAV26L2NT516FX	4				5/16"	.63 [16]	.81 [21]	.58 [15]	1.71 [44]	1.00 [25]	.33 [8]	2.99 [76]	.34 [9]											.13 [3]					
YAV26L2NT38FX	4				3/8"	.63 [16]	.81 [21]	.63 [16]	1.84 [47]	1.00 [25]	.41 [10]	3.23 [82]	.41 [10]											.13 [9]					
YAV28L2ENT14FX	4	4/0 AWG 4/0 WELD 550/24	---	1/4"	.77 [20]	1.03 [19]	.76 [19]	1.28 [33]	.63 [16]	.27 [7]	2.86 [73]	.31 [8]	.15 [4]	W28VT(2) W28RT(2) X28RT(3)	W28VT(2) W28RT(2) X28RT(3)	U28RT(1)	U28RT(1)	U28RT(1)	C28R(1)	L28RT(1)	PURPLE	15	1-1/16"						
YAV28L2NT38FX	4				3/8"	.77 [20]	1.03 [19]	.94 [24]	1.84 [47]	1.00 [25]	.40 [10]	3.43 [87]	.41 [10]											.15 [4]					

TOLERANCE BLOCK							
CONNECTOR SIZE	TOLERANCES						
	B	C	E	K DIA.	L	N	O.D.
-8C THRU -25	±.06	±.04	±.02	±.02	±.09	±.03	±.01
-26 THRU -34	±.08	±.04	±.02	±.02	±.12	±.03	±.01
-35 AND UP	±.09	±.06	±.02	±.02	±.15	±.06	±.01



- NOTES:
- MATERIAL: COPPER TUBING.
 - FINISH: TIN PLATED.
 - DIMENSIONS IN BRACKETS [] ARE IN MILLIMETERS ROUNDED OFF TO THE NEAREST MILLIMETER, UNLESS OTHERWISE NOTED, AND ARE FOR REFERENCE ONLY.
 - INSTALLATION TOOLING AND DIES ARE CONSTANTLY BEING UPDATED. FOR THE LATEST INSTALLATION TOOLING INFORMATION REFER TO THE MASTER CATALOG ON THE BURNDY WEBSITE.

REV	DATE	DESCRIPTION	ECO	BY	C'H'K.
AB	2021-05-27 00:00:00 EDT	UPDATED D MIN, L & N DIMENSIONS FOR YA26LNT38	210521008417	JL	RR

HYLUG™ COPPER (NARROW TONGUE)	
ITEM NO:	N/A
CAT. NO:	YA-L-NT-(TABLE)
DRAWN BY:	AUGUSTIN.S 07/03/10
CHECKER:	--
DSN APPVL:	J MICHAUD 06/11/11
MFG APPVL:	T THRELFALL 06/23/11
QA APPVL:	T WATTS 06/13/11
MKT APPVL:	J SYLVIA 06/13/11
PROD FAM:	CM&R COMPRESSION
PROJECT #:	--
DOCUMENT TYPE:	Sales
REL LEVEL:	Released
DRAWING NO:	30003952
SIZE:	D
SHEET 8 OF 12	AB

REV: CREO_05/20/21

D

D

C

C

B

B

A

A

CATALOG NUMBER	FIG. NO.	CONDUCTOR		STUD HOLE SIZE	DIMENSIONS									INSTALLATION TOOLING										WIRE STRIP LENGTH	
		AWG	MM ²		O.D.	B	C	D MIN.	E	K DIA.	L	N	T	DIELESS (# OF CRIMPS)	MECHANICAL		HYDRAULIC						COLOR CODE		DIE INDEX
															MD6, OUR840, MD7-34R	BCT500HS, Y500CTS	Y35, Y39, Y750, PAT750	Y46 PAT46	Y45	Y48	Y60				
YAZV4C2NT14E2FX	5	#4 AWG #4 WELD 91/24 105/24	---	1/4"	.38 [10]	1.25 [32]	.44 [11]	1.40 [36]	.75 [19]	.27 [7]	2.95 [75]	.31 [8]	.09 [2]	Y1MRTC(4) MY29-11(2) Y122CMR (2) Y81KFT(1) Y81KFTMBH(1) PAT81KFT-18V(1)	W4CVT(2) W4CRT(2) X4CRT(2)	W4CVT(2) W4CRT(2) X4CRT(2)	U4CRT(2)	U4CRT(2)	U4CRT(2)	--	--	GRAY	8	1-5/16"	
YAZV2C2NT14E2FX	5	#2 AWG #2 WELD 125/24 150/24	35	1/4"	.46 [12]	1.38 [35]	.50 [13]	1.40 [36]	.75 [19]	.27 [7]	3.14 [80]	.31 [8]	.10 [3]	Y1MRTC(4) MY29-11(4) Y644HS(1) Y81KFT(1) Y122CMR (2) PAT81KFT-18V(1)	W2CVT(2) W2CRT(2) X2CRT(2)	W2CVT(2) W2CRT(2) X2CRT(2)	U2CRT(2)	U2CRT(2)	U2CRT(2)	--	--	BROWN	10	1-7/16"	
YAZV282NT38FX	5	4/0 AWG 4/0 WELD 550/24	---	3/8"	.77 [20]	1.62 [41]	.94 [24]	1.84 [47]	1.00 [25]	.40 [10]	3.96 [101]	.41 [10]	.17 [20]	MY2911 (1) Y644 (1) PAT644 (1) PAT444 (1) Y81KFT (1) PAT81KFT (1)	W28VT(4) W28RT(4) X28RT(6)	W28VT(4) W28RT(4) X28RT(6)	U28RT(2)	U28RT(2)	U28RT(2)	C28R(1)	L28RT(1)	PURPLE	15	1-11/16"	
YAZV292NT516FX	5	4/0 FLEX CLASS I,K,M	---	5/16"	.80 [20]	2.00 [51]	.96 [24]	1.71 [44]	1.00 [25]	.33 [8]	4.28 [109]	.34 [9]	.16 [4]	MY2911 (1) Y644 (1) PAT644 (1) PAT444 (1) Y81KFT (1) PAT81KFT (1)	W29VT(4) X29RT(8)	W29RT(4) W29VT(4) X29RT(8)	U29RT(2)	U29RT(2)	U29RT(2)	C29R(1)	L29RT(1)	YELLOW	16	2-1/16"	
YAZ342NT38FX	5	373.7 kcmil 925/24 350 FLEX	240	3/8"	1.06 [27]	2.25 [57]	.96 [24]	1.84 [47]	1.00 [25]	.40 [10]	4.85 [123]	.41 [10]	.23 [6]	Y644 (1) PAT644 (1) PAT444 (1) Y81KFT (1) PAT81KFT (1)	W32VT(4)	W32RT(4) W32RT(4)	U32RT(4)	U32RT(4)	U32RT(4)	C32R(2)	L32RT(2)	BLUE	19	2-5/16"	
YAZ382ENT38FX	5	535.3 kcmil 1325/24 500 FLEX	300	3/8"	1.25 [32]	2.81 [71]	1.46 [37]	2.02 [51]	1.00 [25]	.41 [10]	5.72 [145]	.50 [13]	.27 [7]	Y644 (1) PAT644 (1) PAT444 (1) Y81KFT (1) PAT81KFT (1)	----	----	U38XRT(4)	U38XRT(4)	U38XRT(4)	C38R(2)	L38RT(2)	PINK	L99	2-7/8"	

TOLERANCE BLOCK							
CONNECTOR SIZE	TOLERANCES						
	B	C	E	K DIA.	L	N	O.D.
-8C THRU -25	±.06	±.04	±.02	±.02	±.09	±.03	±.01
-26 THRU -34	±.08	±.04	±.02	±.02	±.12	±.03	±.01
-35 AND UP	±.09	±.06	±.02	±.02	±.15	±.06	±.01

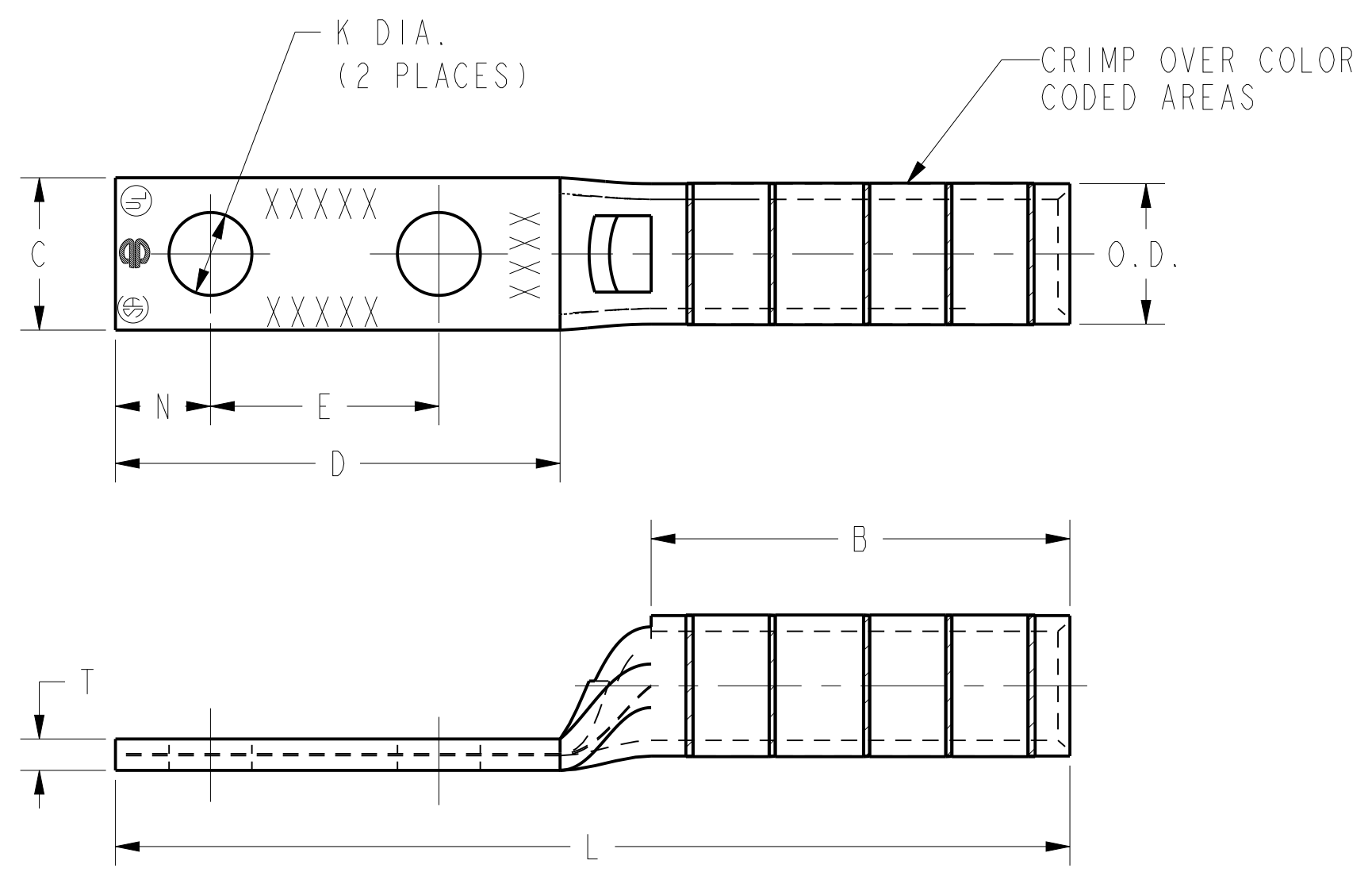


FIG. 5

- NOTES:
1. MATERIAL: COPPER TUBING.
 2. FINISH: TIN PLATED.
 3. DIMENSIONS IN BRACKETS [] ARE IN MILLIMETERS ROUNDED OFF TO THE NEAREST MILLIMETER, UNLESS OTHERWISE NOTED, AND ARE FOR REFERENCE ONLY.
 4. INSTALLATION TOOLING AND DIES ARE CONSTANTLY BEING UPDATED. FOR THE LATEST INSTALLATION TOOLING INFORMATION REFER TO THE MASTER CATALOG ON THE BURNDY WEBSITE.

REV	DATE	DESCRIPTION	ECO	BY	C'K'
AB	2021-05-27 00:00:00 EDT	UPDATED D MIN, L & N DIMENSIONS FOR YA26LNT38	210521008417	JL	RR

HYLUG™ COPPER (NARROW TONGUE)	
ITEM NO:	N/A
CAT. NO:	YA-L-NT-(TABLE)
DRAWN BY:	AUGUSTIN.S 07/03/10
CHECKER:	--
DSN APPVL:	J MICHAUD 06/11/11
MFG APPVL:	T THRELFALL 06/23/11
QA APPVL:	T WATTS 06/13/11
MKT APPVL:	J SYLVIA 06/13/11
PROD FAM:	CM&R COMPRESSION
SCALE:	3:1
PROJECT #:	--
DOCUMENT TYPE:	Sales
REL LEVEL:	Released
DRAWING NO:	30003952
REV:	AB
SHEET:	9 OF 12

REV: CREO 05/20/21

D

D

CATALOG NUMBER	FIG. NO.	CONDUCTOR		STUD HOLE SIZE	DIMENSIONS									DIELESS (# OF CRIMPS)	INSTALLATION TOOLING								WIRE STRIP LENGTH	
		AWG	MM ²		O.D.	B	C	D MIN.	E	K DIA.	L	N	T		MECHANICAL		HYDRAULIC							
															MD6, OUR840, MD7-34R	BCT500HS, Y500CTHS	Y35, Y39, Y750, PAT750	Y46 PAT46	Y45	Y48	Y60	COLOR CODE		DIE INDEX
YAZ382NNTFX	5	535.3 kcmil 1325/24 500 FLEX	300	1/2"	1.25 [32]	2.81 [71]	1.62 [41]	3.02 [77]	1.75 [44]	.56 [14]	6.72 [171]	.62 [16]	.27 [7]	Y644 (1) PAT644 (1) PAT444 (1) Y81KFT (1) PAT81KFT (1)	----	----	U38XRT(4)	U38XRT(4)	U38XRT(4)	--	L38RT(2)	PINK	L99	2-7/8"
YAZ382NT38FX	5	535.3 kcmil 1325/24 500 FLEX	300	3/8"	1.25 [32]	2.81 [71]	1.62 [41]	2.03 [51]	1.00 [25]	.41 [10]	5.72 [145]	.50 [13]	.27 [7]	Y644 (1) PAT644 (1) PAT444 (1) Y81KFT (1) PAT81KFT (1)	----	----	U38XRT(4)	U38XRT(4)	U38XRT(4)	--	L38RT(2)	PINK	L99	2-7/8"
YAZ442NT38FX	5	777.7 kcmil 1925/24 750 FLEX	500	3/8"	1.50 [38]	3.00 [76]	1.62 [41]	2.03 [51]	1.00 [25]	.40 [10]	6.09 [155]	.50 [13]	.33 [8]	PAT644 (1) PAT444 (1) Y81KFT (2) PAT81KFT (2)	----	----	U44XRT(4)	U44XRT(4)	U44XRT(4)	C44RT(2)	L44RT(2)	YELLOW	L115	3-1/16"

C

C

TOLERANCE BLOCK							
CONNECTOR SIZE	TOLERANCES						
	B	C	E	K DIA.	L	N	O.D.
-8C THRU -25	±.06	±.04	±.02	±.02	±.09	±.03	±.01
-26 THRU -34	±.08	±.04	±.02	±.02	±.12	±.03	±.01
-35 AND UP	±.09	±.06	±.02	±.02	±.15	±.06	±.01

B

B

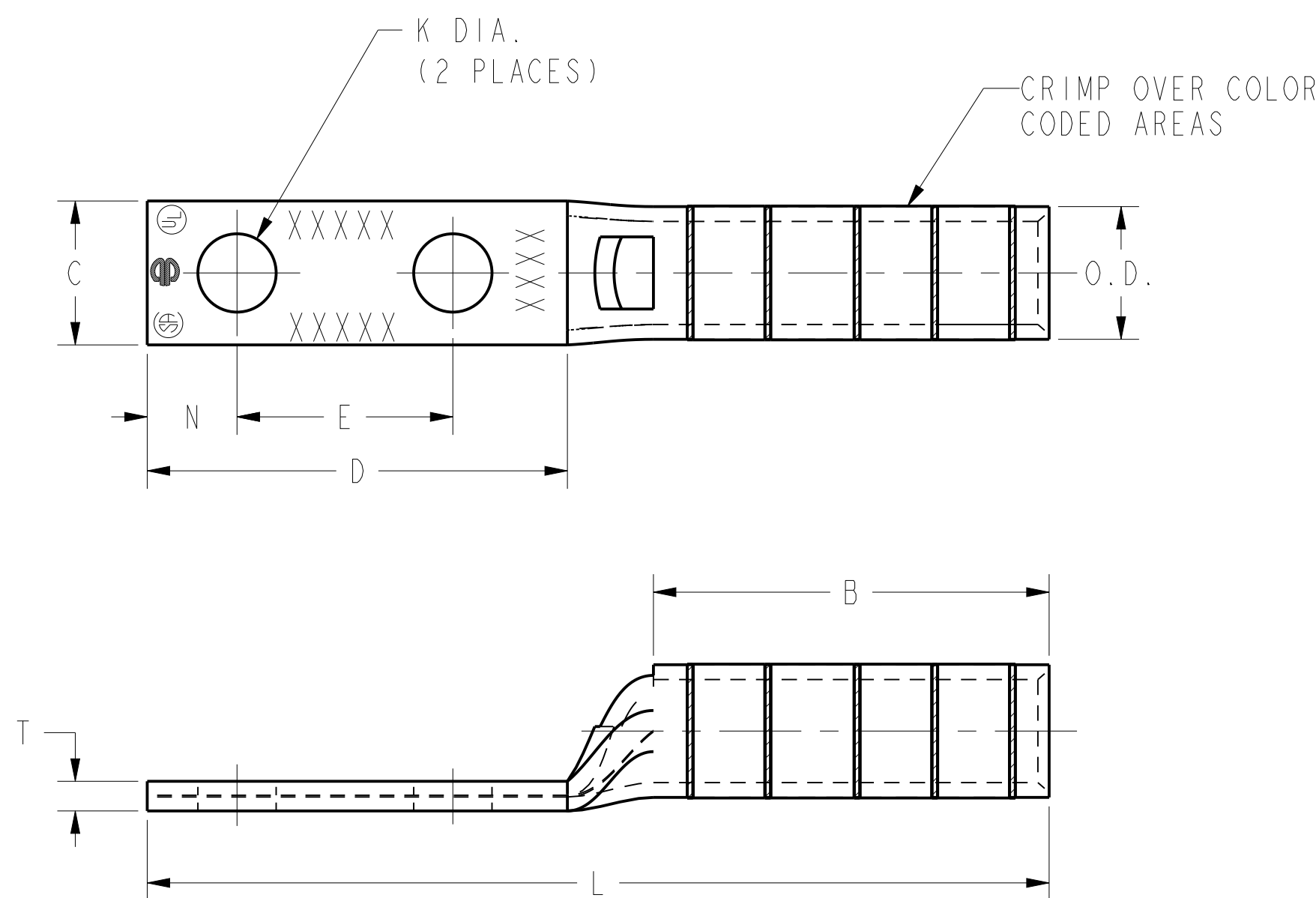


FIG. 5

A

A

NOTES:

1. MATERIAL: COPPER TUBING.
2. FINISH: TIN PLATED.
3. DIMENSIONS IN BRACKETS [] ARE IN MILLIMETERS ROUNDED OFF TO THE NEAREST MILLIMETER, UNLESS OTHERWISE NOTED, AND ARE FOR REFERENCE ONLY.
4. INSTALLATION TOOLING AND DIES ARE CONSTANTLY BEING UPDATED. FOR THE LATEST INSTALLATION TOOLING INFORMATION REFER TO THE MASTER CATALOG ON THE BURNDY WEBSITE.

REV	DATE	DESCRIPTION	ECO	BY	C'K'K.
AB	2021-05-27 00:00:00 EDT	UPDATED D MIN, L & N DIMENSIONS FOR YA26LNT38	210521008417	JL	RR

HYLUG™ COPPER (NARROW TONGUE)			
ITEM NO:	N/A		
CAT. NO:	YA-L-NT-(TABLE)		
DRAWN BY:	AUGUSTIN.S	07/03/10	
CHECKER:	--	--	
DSN APPVL:	J MICHAUD	06/11/11	
MFG APPVL:	T THRELFALL	06/23/11	
QA APPVL:	T WATTS	06/13/11	
MKT APPVL:	J SYLVIA	06/13/11	
PROD FAM:	CM&R COMPRESSION	DRAWING NO	SCALE: 3:1
PROJECT #:	--	SIZE	
DOCUMENT TYPE:	Sales	30003952	AB
REL LEVEL:	Released	D	SHEET 10 OF 12

REV: CREO 05/20/21

8

7

6

5

4

3

2

1

CATALOG NUMBER	FIG. NO.	CONDUCTOR		STUD HOLE SIZE	DIMENSIONS								INSTALLATION TOOLING								WIRE STRIP LENGTH			
		AWG	MM ²		O.D.	B	C	D MIN.	E	K DIA.	L	N	T	MECHANICAL		HYDRAULIC						COLOR CODE	DIE INDEX	
														MD6, OUR840, MD7-34R	BCT500HS, Y500CTHS	Y35, Y39, Y750, PAT750	Y46 PAT46	Y45	Y48	Y60				
YAZ442NNT	6	1000 kcmil	500	1/2"	1.50 [38]	3.00 [76]	1.62 [41]	3.08 [78]	1.75 [44]	.56 [14]	7.08 [180]	.65 [17]	.33 [8]	Y644 (1) PAT444 (1) Y81KFT (3) PAT81KFT (3)	----	----	----	P44RT(4)	S44RT(4)	C44R(2)	L44RT(2)	WHITE	27	3-1/16"

TOLERANCE BLOCK							
CONNECTOR SIZE	TOLERANCES						
	B	C	E	K DIA.	L	N	O.D.
-8C THRU -25	±.06	±.04	±.02	±.02	±.09	±.03	±.01
-26 THRU -34	±.08	±.04	±.02	±.02	±.12	±.03	±.01
-35 AND UP	±.09	±.06	±.02	±.02	±.15	±.06	±.01

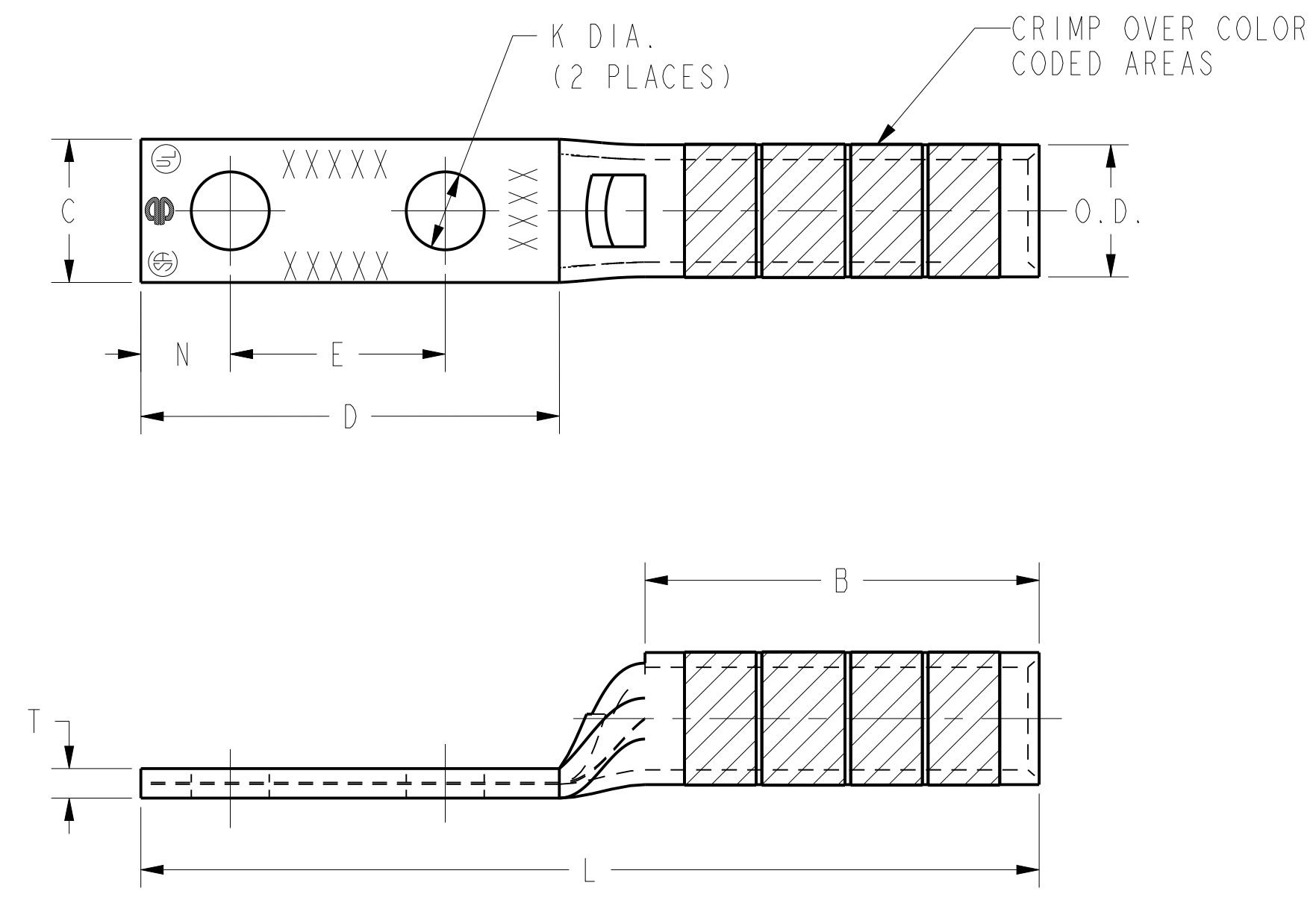


FIG. 6

- NOTES:
1. MATERIAL: COPPER TUBING.
 2. FINISH: TIN PLATED.
 3. DIMENSIONS IN BRACKETS [] ARE IN MILLIMETERS ROUNDED OFF TO THE NEAREST MILLIMETER, UNLESS OTHERWISE NOTED, AND ARE FOR REFERENCE ONLY.
 4. INSTALLATION TOOLING AND DIES ARE CONSTANTLY BEING UPDATED. FOR THE LATEST INSTALLATION TOOLING INFORMATION REFER TO THE MASTER CATALOG ON THE BURNDY WEBSITE.

REV	DATE	DESCRIPTION	ECO	BY	C'K
AB	2021-05-27 00:00:00 EDT	UPDATED D MIN, L & N DIMENSIONS FOR YA26LNT38	210521008417	JL	RR

HYLUG™ COPPER (NARROW TONGUE)		SCALE: 2:1	
ITEM NO:	N/A	DRAWING NO	
CAT. NO:	YA-L-NT-(TABLE)	REV	
DRAWN BY:	AUGUSTIN.S 07/03/10	PROJECT #:	
CHECKER:	--	SIZE	
DSN APPVL:	J MICHAUD 06/11/11	30003952	
MFG APPVL:	T THRELFALL 06/23/11	DOCUMENT TYPE: Sales	
QA APPVL:	T WATTS 06/13/11	REL LEVEL: Released	
MKT APPVL:	J SYLVIA 06/13/11	SHEET 11 OF 12	
PROD FAM:	CM&R COMPRESSION	AB	

REV: CREO 05/20/21

CATALOG NUMBER	FIG. NO.	CONDUCTOR		STUD HOLE SIZE	DIMENSIONS									DIELESS (# OF CRIMPS)	INSTALLATION TOOLING								WIRE STRIP LENGTH		
		AWG	MM ²		O.D.	B	C	D MIN.	H REF.	K DIA.	L	N	T		MECHANICAL		HYDRAULIC							COLOR CODE	DIE INDEX
															MD6, OUR840, MD7-34R	BCT500HS, Y500CTHS	Y35, Y39, Y750, PAT750	Y46 PAT46	Y45	Y48	Y60				
YA32LNT3890	I	400 kcmil	--	3/8" [M10]	.95 [24]	1.19 [30]	.96 [24]	.85 [26]	2.19 [56]	.41 [10]	1.45 [37]	.41 [10]	.19 [5]	Y644HS (1) Y81KFT(2) PAT444 (1) PAT81KFT-18V (2)	W32VT(4)	----	U32RT(2)	U32RT(2)	U32RT(2)	C32R(1)	L32RT(1)	BLUE	19 OR 470	1-1/4"	

TOLERANCE BLOCK							
CONNECTOR SIZE	TOLERANCES						
	B	C	E	K DIA.	L	N	O.D.
-8C THRU -25	±.06	±.04	±.02	±.02	±.09	±.03	±.01
-26 THRU -34	±.08	±.04	±.02	±.02	±.12	±.03	±.01
-35 AND UP	±.09	±.06	±.02	±.02	±.15	±.06	±.01

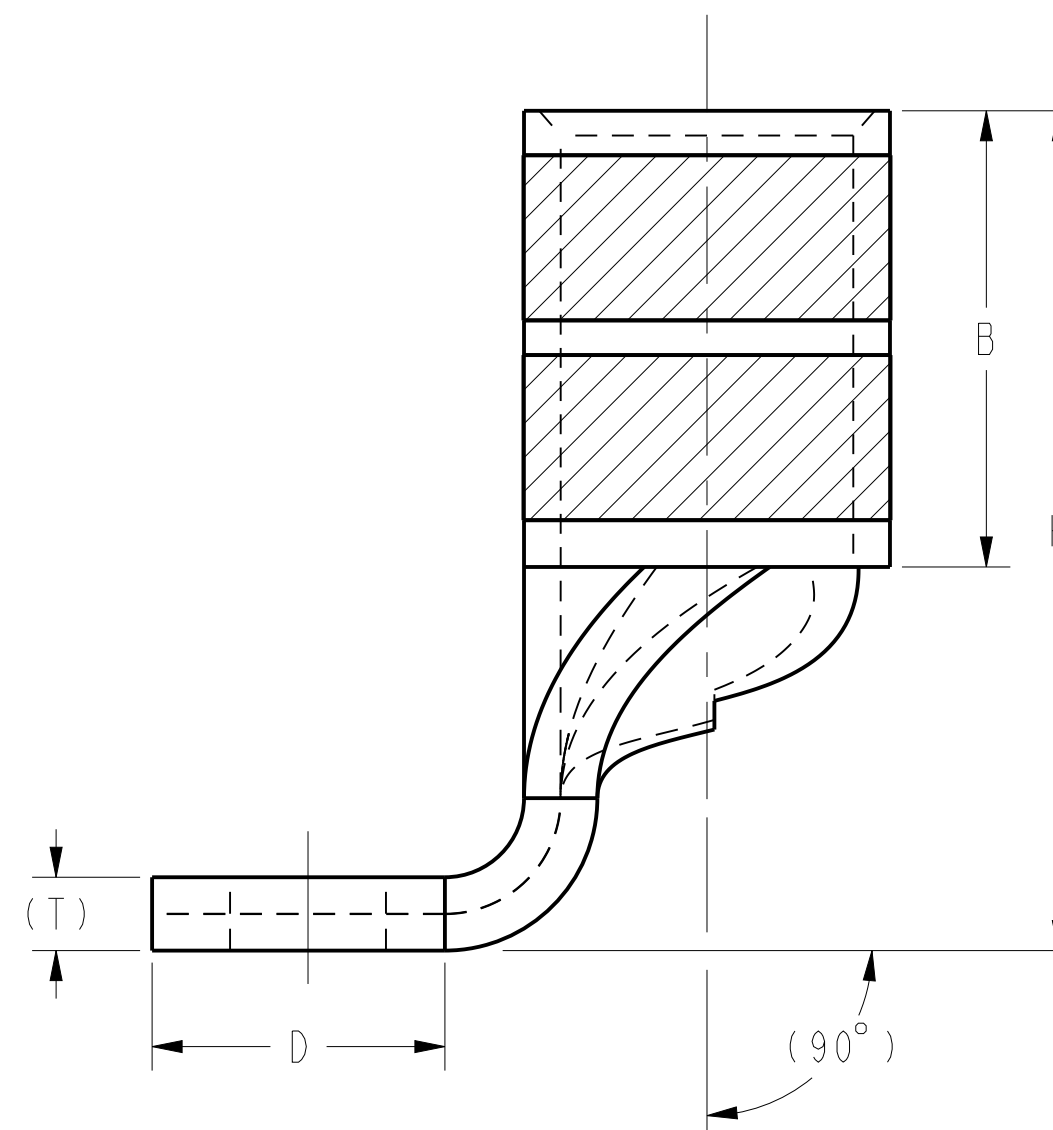
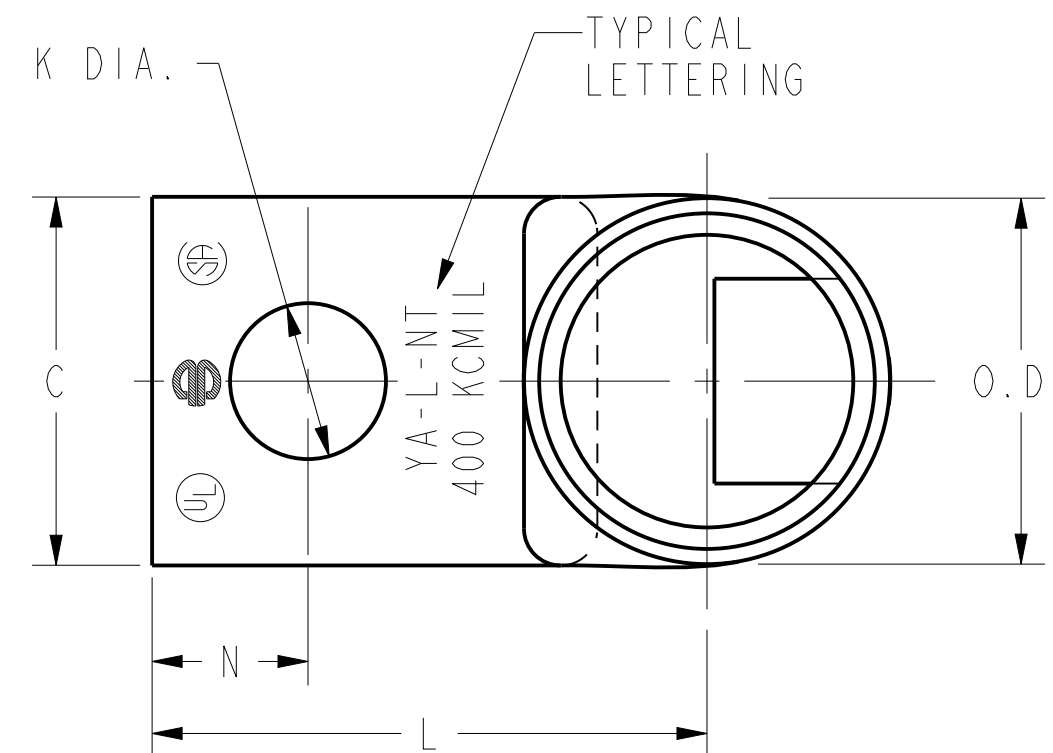


FIG. 1.

NOTES:

1. MATERIAL: COPPER TUBING.
2. FINISH: TIN PLATED.
3. DIMENSIONS IN BRACKETS [] ARE IN MILLIMETERS ROUNDED OFF TO THE NEAREST MILLIMETER, UNLESS OTHERWISE NOTED, AND ARE FOR REFERENCE ONLY.
4. INSTALLATION TOOLING AND DIES ARE CONSTANTLY BEING UPDATED. FOR THE LATEST INSTALLATION TOOLING INFORMATION REFER TO THE MASTER CATALOG ON THE BURNDY WEBSITE.

REV	DATE	DESCRIPTION	ECO	BY	C'K'K.
AB	2021-05-27 00:00:00 EDT	UPDATED D MIN, L & N DIMENSIONS FOR YA26LNT38	210521008417	JL	RR

HYLUG™ COPPER (NARROW TONGUE)			
ITEM NO:	N/A		
CAT. NO:	YA-L-NT-(TABLE)		
DRAWN BY:	AUGUSTIN.S	07/03/10	
CHECKER:	--	--	
DSN APPVL:	J MICHAUD	06/11/11	
MFG APPVL:	T THRELFALL	06/23/11	
QA APPVL:	T WATTS	06/13/11	
MKT APPVL:	J SYLVIA	06/13/11	
PROD FAM:	CM&R COMPRESSION	DRAWING NO	SCALE: 2:1
PROJECT #:	--	SIZE	
DOCUMENT TYPE:	Sales	30003952	AB
REL LEVEL:	Released	D	SHEET 12 OF 12

REV: CREO 05/20/21