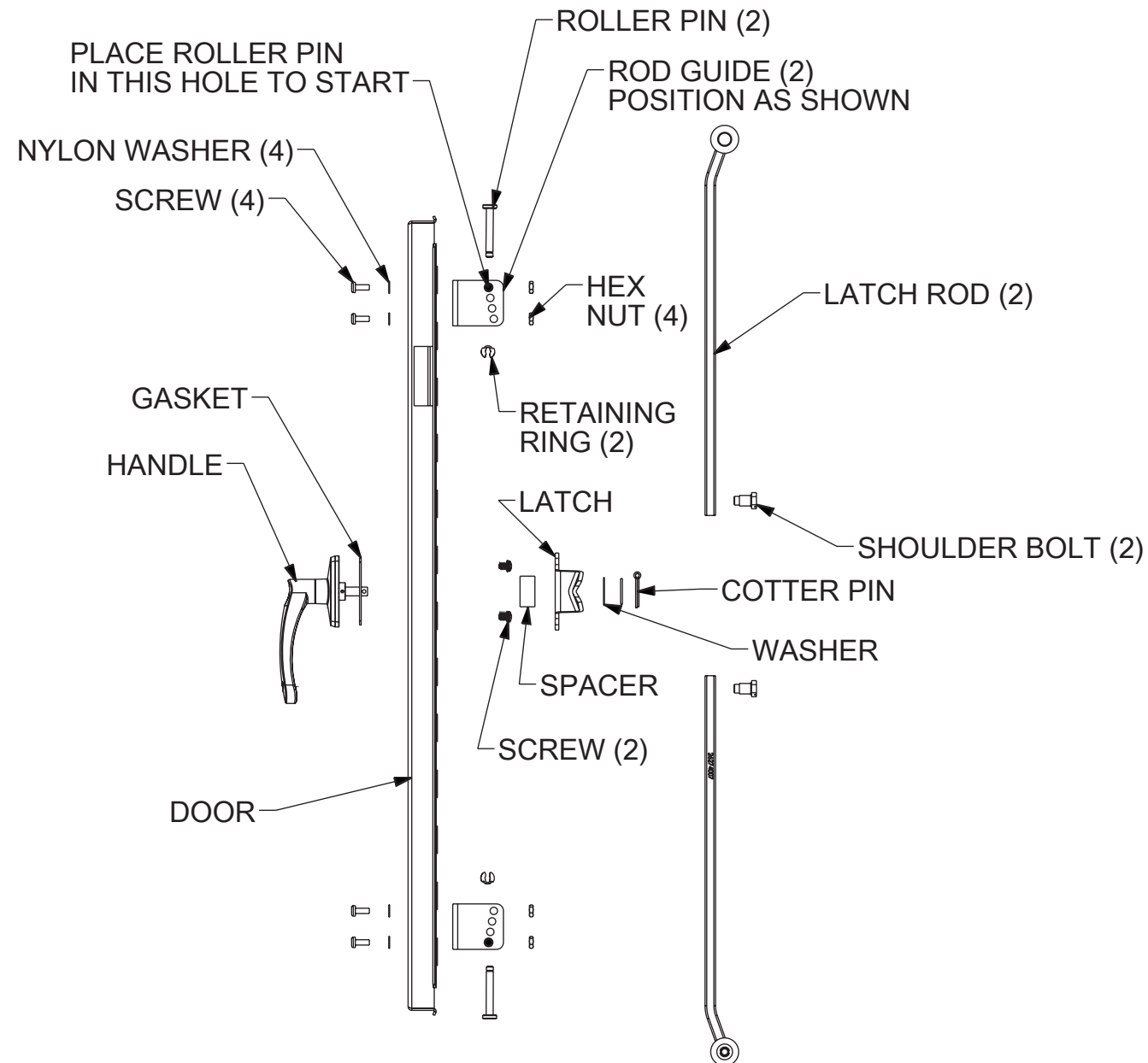




### AL2, AL3 Latch Kit

**⚠ WARNING**

To avoid electric shock, do not energize any circuits before all internal and external electrical and mechanical clearances are checked to assure that all assembled equipment functions safely and properly.



### Installation Instruction For Single-Point Latch Kit

Brushed Chrome Catalog Numbers: AL2A, AL2ACCW, AL3A

Black Catalog Numbers: AL2ABLK, AL2ACCWBLK, AL3ABLK

1. Locate and drill holes for handle as shown below.

**Do not drill holes for rod guides.**

2. Assemble latch kit as shown.

### Installation Instruction For Three-Point Latch Kit

Brushed Chrome Catalog Numbers: AL2BR, AL2CR, AL2DR, AL2BCCW, AL2CCCW, AL2DCCW, AL3BR, AL3CR, AL3DR

Black Catalog Numbers: AL2BRBLK, AL2CRBLK, AL2DRBLK, AL2BCCWBLK, AL2CCCWBLK, AL2DCCWBLK, AL3BRBLK, AL3CRBLK, AL3DRBLK

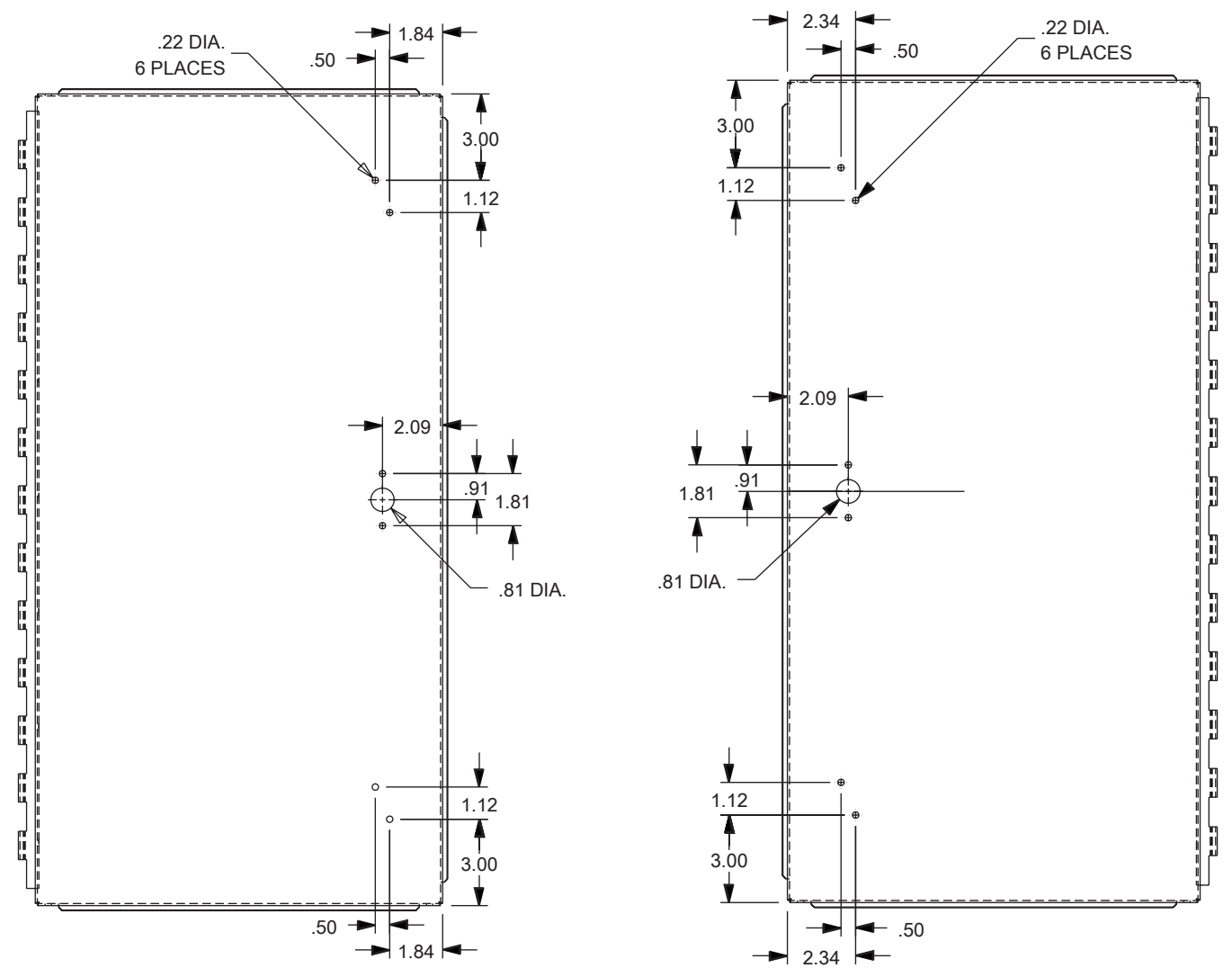
1. Locate and drill holes in door from outside edges using dimensions shown.

2. Install nylon washers and handle gasket on outside of door to obtain proper sealing.

3. The latch rods are made to fit different size enclosures. If latch rod is too long, select proper hole and cut latch rods approximately 3/8 inch from center of hole. Be sure of hole selection before cutting.

4. Place roller pin in hole shown and secure with retaining ring. If gasket compression is too great, simply move roller pin one hole at a time until proper gasket compression is attained.

5. Washers are provided to position latch by spacing it in or out as required.



DOOR HINGED ON LEFT

DOOR HINGED ON RIGHT