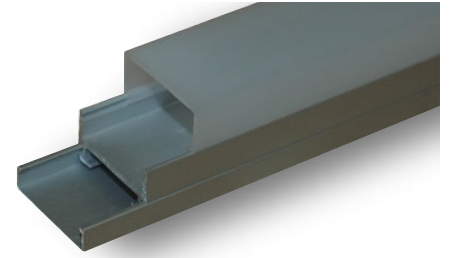




# SLC - 011S

## Diffusion LED Channel



### Description

Diffusion SLC-011S is a Two part, anodized aluminum LED extrusion that comes complete with two endcaps and an opal polycarbonate lens.

*Note: Extra clips and endcaps are available by request*

### Application

- Behind mirrors
- Kitchen cabinet
- Shelving
- Surface mount
- Wardrobe
- Closets

### Specifications

CHANNEL	Anodized Aluminum Extrusion
LENS	Opal Polycarbonate, Heat Resistant, UV Stable and Shatter Resistant
LENGTH	8 ft (2.44 meters)
COLOR	Silver (Standard), White, Black, Antimicrobial Coating and Custom RAL
MOUNTING CLIP MATERIAL	Aluminum
ENVIRONMENT	Indoor and Outdoor
WARRANTY	5 Year Warranty

### Ordering Information

ORDERING CODE	COLOR
SLC - 011S	XX
	Blank (Silver) WH BK Custom RAL

### Diagram

