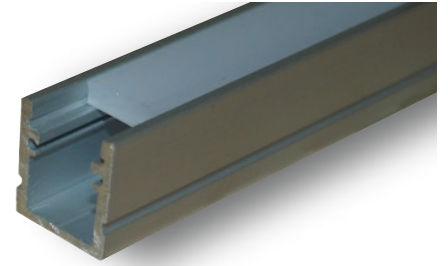




# SLC - 402S

## Diffusion LED Channel



### Description

Diffusion SLC-402S is a Narrow, anodized aluminum LED extrusion that comes complete with three mounting hardware, two endcaps, and an extra thick opal polycarbonate lens for zero dotting.

*Note: Extra clips and endcaps are available by request*

### Application

- Platforms
- Niches
- Furniture
- Shelving
- Stairs

### Specifications

CHANNEL	Anodized Aluminum Extrusion
LENS	Opal Polycarbonate, Heat Resistant, UV Stable and Shatter Resistant
LENGTH	8 ft (2.44 meters)
COLOR	Silver (Standard), White, Black, Antimicrobial Coating and Custom RAL
MOUNTING CLIP MATERIAL	Aluminum
ENVIRONMENT	Indoor and Outdoor
WARRANTY	5 Year Warranty

### Ordering Information

ORDERING CODE	COLOR
SLC - 402S	XX
	Blank (Silver) WH BK Custom RAL

### Diagram

