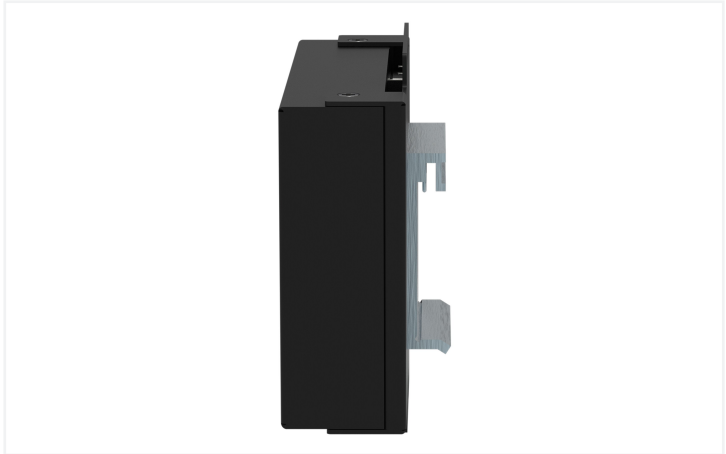
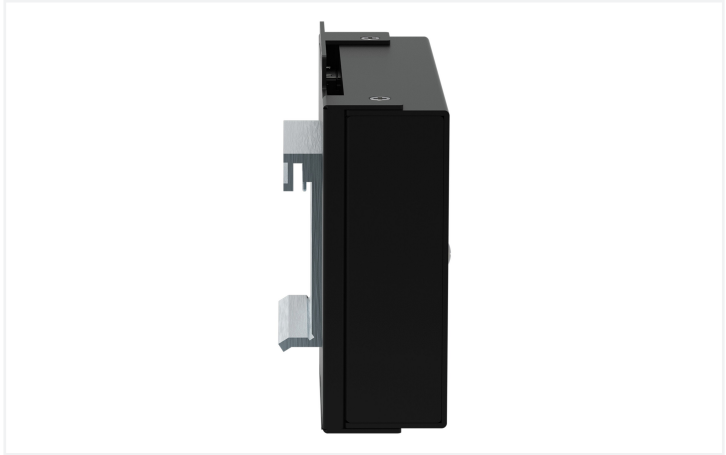




Color: ■ black



This unmanaged industrial ETHERNET switch (852-112) has eight Fast ETHERNET ports for easily setting up small- to medium-sized networks. Its slim design paired with a DIN-rail adapter simplifies installation in the control cabinet and provides high vibration and shock resistance. Additionally, automatic transmission rate detection (auto-negotiation) and automatic identification of the transmit and receive lines (Auto MDI-X) allow simple plug-and-play operation, saving time and money during commissioning.

#### Features:

- 8 ETHERNET ports 10/100 Mbit/s Autonegotiation
- Front-panel diagnostic LEDs
- Supports Auto-MDI/MDI-X functions
- Full/half-duplex transfer modes for each port
- Store-and-forward switching method
- Integrated address look-up table, supports 2000 absolute MAC addresses
- Overvoltage protection
- Data flow control, per IEEE 802.3x Flow Control, in full-duplex mode
- DIN-35 rail mounting

#### Technical data

Switching mode	Store-and-forward; non-blocking
Number of 100 Mbit/s ports	8
Communication standards	IEEE 802.3 10BASE-T IEEE 802.3u 100BASE-TX IEEE 802.3x Flow Control
MAC table (size)	2000 addresses
Jumbo frame size	1536 bytes
Supply voltage	18 ... 30 VDC
Power consumption (max.)	3 W
ESD (contact/air discharge)	4 kV / 8 kV
Baud rate	Copper cable: 10/100 Mbit/s
Transmission medium (communication/fieldbus)	Copper cable: Cat. 5 or higher, 100 m maximum cable length
Topology	Star
Indicators	Device: LED (PWR) green: Power supply; per port: LED (100, LNK/ACT) green: Status 100 Mbps, LNK/ACT ports 1 ... 8

#### Connection data

Connection technology: communication/fieldbus	Copper cable: 8 x RJ-45
Connection technology: supply	1 x Built-in PCB terminal block: 739-103

#### Physical data

Width	109.2 mm / 4.299 inches
Height	73.8 mm / 2.906 inches
Depth	24 mm
Depth from upper-edge of DIN-rail	32 mm / 1.26 inches

#### Mechanical data

Weight	415 g
Color	black
Housing material	Sheet steel