

# ChromaDim SERIES

## 24VDC 3W TUNABLE PUCK LIGHT



Project Name	Type
Catalog #	Date

### PRODUCT OVERVIEW

A surface or recess mount 24VDC, 3W High Power Tunable LED puck that is available in white, black, bronze or brushed nickel. All high-grade aluminum for superior heat dissipation. Frosted lens delivers even light distribution. The puck can be tunable and dimmable via ChromaDim Lighting System.



### FEATURES

- 24VDC operation
- 3.0W
- Tunable with ChromaDim Lighting System
- Adjust color temp. from 2400K to 5000K
- Multiple finishes: white, black, bronze, brushed nickel
- 112° beam angle
- Dimmable
- Surface or recess mount
- 5 year warranty when used with GM power supplies
- Ambient Operating Temperature: -4°F to 113°F

### SPECIFICATIONS

#### ELECTRICAL

- 3.0W
- 24VDC operation

#### OPTICS

- 225lm at 3500K
- 90+ CRI
- Color tuning range: 2400K to 5000K
- Beam Angle: 112° for soft even illumination

#### CONSTRUCTION

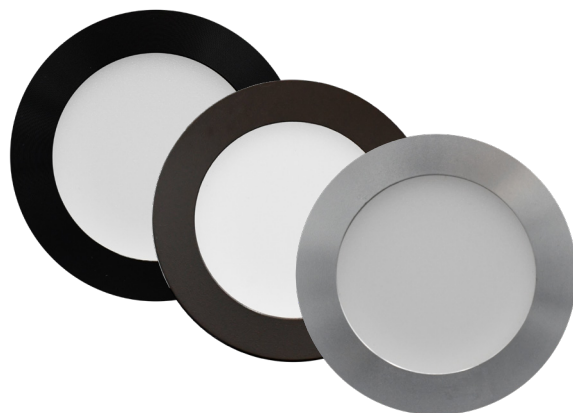
- All high-grade aluminum for superior heat dissipation

#### COMPLIANCE

- ETL listed for US and Canada. Dry and Damp locations only.

#### WARRANTY

- 5 year warranty



### ORDERING INFORMATION

Example: CHPL-W

Model	-	Finish
CHPL	-	W (White)
		BNK (Brushed Nickel)
		BZ (Bronze)
		B (Black)

Note: 48" leads included

### CONTROLLERS

Model	Description
LTR-S-TUN-SYS	Tunable White CCT Lighting System; Wall Controller and 96W Driver
LTR-S-TUN-SW	LTR-S-TUN Wall Switch Only
LTR-S-TUN-24V-90W	90W 24V Tunable White Driver; Driver Only
LTR-S-TUN-24V-180W	180W 24V Tunable White Driver; Driver Only

# ChromaDim SERIES

## 24VDC 3W TUNABLE PUCK LIGHT



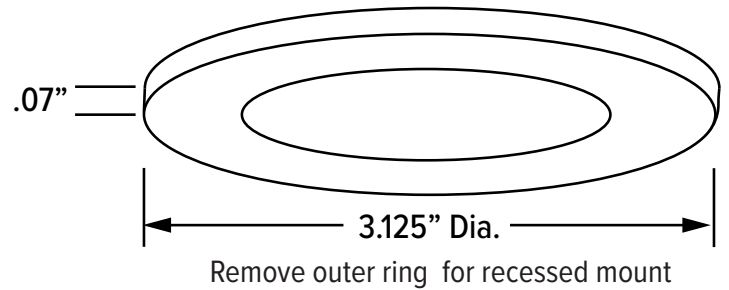
### DIMENSIONS

#### SURFACE MOUNT INSTALLATION



#### RECESS MOUNT INSTALLATION

Cut 2-7/8" dia hole.  
Requires 0.57" deep minimum recess



### WIRING DIAGRAM

