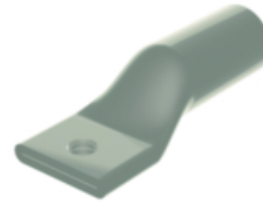




## Compression Terminal

By Burndy  
Catalog # [YA25A9](#)

AL Terminal, AL9CU, Internal Chamfer, Tin Plated, Prefilled PENETROX™ A13, End Cap, UL/CSA, 90°C, Up to 35kV, Color Code, Die Index.



### Application

Wire Termination

### General

Color Code	Tan
Connector Type	DUAL RATED
Die Index	296
EU RoHS Indicator	Yes
Feature - Barrel Style	Chamfered
Feature - Barrel Type	Standard
Finish Type	Tin-Plated
Material	ALUMINUM
Physical Attribute - Number of Holes	1
Physical Attribute - Tongue Type	Standard
Plated	Y
Plating Type	Tin - Electro Plated
Sub Brand	HYLUG
Temperature Rating	194
Trade Name	HYLUG™
Type	YA-A, Dual Rated
UPC	781810753156
UPC 12 Digit	7818107531566

### Dimensions

Dimension - B Length fraction	1-1/16 in
Dimension - B Length inch	1.05 in
Dimension - Bolt Hole Size inch	0.52 in
Dimension - Bolt Size fraction	1/2
Dimension - Bolt Size inch	0.5
Dimension - D inch	1.34 in
Dimension - Hole Size fraction	1/2
Dimension - Hole Size inch	0.56
Dimension - Hole Size mm	14 mm
Dimension - L Length Overall mm	72 mm
Dimension - Length Overall inch	2.83 in
Dimension - N inch	0.63 in
Dimension - Outside Diameter inch	0.60 in
Dimension - Pad Width inch	1.03 in
Dimension - Strip Length inch	1-1/16
Dimension - Strip Length mm	28.0

### Electrical Ratings

Voltage - Maximum	35000
Voltage Rating	35 kV

### Conductor Related

Conductor - AL Str Size	1/0 AWG
Conductor - AL Str Size Range	1/0 AWG
Conductor - Copper Str Size	1/0 AWG
Conductor - Copper Str Size Range	1/0 AWG
Conductor - Material	ALUMINUM / COPPER
Conductor Size	1/0 AWG
Conductor Type	CODE
Wire Size	1/0 AWG

### Certifications and Compliance

Certification - CSA Approved	Yes
Certification - ETL	No
Certification - UL Recognized	No
Certification - cULus	No
Industry Standard(s)	UL 486A-486B
Standards - Industry Standards Met	UL 486A-486B
Standards - RoHS Compliance Status	CM
UL Listed	Yes

### Logistics

Carton Quantity	10
Minimum Pack Quantity	1

### Product Assets

[Customer Notices - Prop 65 Notice](#)  
[Installation Manuals - Aluminum Installation Instructions](#)  
[Sales Drawings - SD073935-01](#)

Dimension - Stud Size fraction 1/2  
Dimension - Stud Size inch 1/2  
Dimension - Thread Size 1/2  
Dimension - Z inch 0.71 in  
Physical Attribute - Tongue Straight  
Angle



**A proud member of the Hubbell Family.**

©2023 Hubbell Incorporated. All rights reserved.  
BRDY-YA25A9-SPEC-EN | REV 6/2023