



MasterClass InstantFit (UL Type- A) T8

7T8/MAS/24-840/IF11/P/DIM 10/1

The MasterClass InstantFit T8 lamps provide hassle-free installation with simple lamp-for-lamp replacements. They deliver what we promise, with at least 40% energy savings, flicker-free performance, and the life you would expect. Other lamps claim compatibility but only MasterClass InstantFit (UL Type A) has been proven to work with over 200 ballasts and drivers, delivering even light output, with proven energy savings and a long average lifetime. End users will be delighted being under these comfortable and high quality lamps with no visible flicker and optimized optics. Energy managers will enjoy these lamps too as they can count the savings delivered by our lamps. To enjoy more energy savings, the MasterClass InstantFit lamps can be paired with the Advance TLED drivers to create a Type C system. With available 70,000 hour life, 7-year limited warranty and a shatter-prevention polycarbonate lens, Philips MasterClass InstantFit TLED lamps deliver benefits for all.

Product data

General Information		Luminous Flux	
Lighting Technology	LED		1,200 lumen
Switching Cycle	50,000	Color Designation	Cool White (CW)
Nominal lifetime	70,000 hour(s)	Correlated Color Temperature (Nom)	4000 K
Cap-Base	G13 [Medium Bi-Pin Fluorescent]	Luminous Efficacy (rated) (Nom)	171 lm/W
		Color Consistency	<6
		Color rendering index (CRI)	80
		LLMF At End Of Nominal Lifetime (Nom)	70 %
Light Technical			
Color Code	840 [CCT of 4000K]		
Beam Angle (Nom)	180 degree(s)		

MasterClass InstantFit (UL Type-A) T8

Operating and Electrical	
Line Frequency	20K to 120K Hz
Input Frequency	20K to 120K Hz
Power Consumption	7 W
Wattage Equivalent	17 W
Starting Time (Nom)	0.5 s
Warm-up time to 60% light	0.5 s
Power Factor (Fraction)	0.9
Voltage (Nom)	120-277,347 V

Temperature	
Ambient temperature range	-20 °C to 45 °C
T-Case Maximum (Nom)	104 °F

Controls and Dimming	
Dimmable	Only with specific dimmers

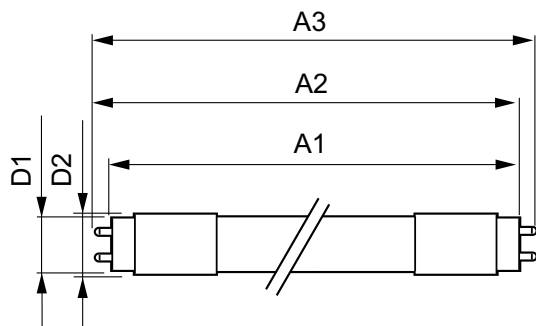
Mechanical and Housing	
Bulb Finish	Frosted
Bulb Material	Plastic
Product Length	23-5/8 inch

Bulb Shape	Tube, double-ended
------------	--------------------

Approval and Application	
Energy Saving Product	Yes
Approval Marks	RoHS compliance UL certificate DLC compliance
Energy Consumption kWh/1000 h	- kWh
Energy Certifications	DLC Standard
EU RoHS compliant	Yes

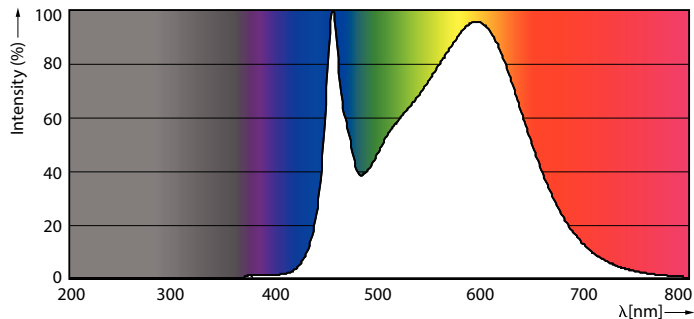
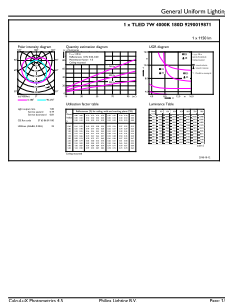
Product Data	
Order product name	7T8/MAS/24-840/IF11/P/DIM 10/1
Order code	541839
Numerator - Quantity Per Pack	1
Numerator - Packs per outer box	10
Material number (12NC)	929001987104
Full product name	7T8/MAS/24-840/IF11/P/DIM 10/1
EAN/UPC - Case	50046677541830

Dimensional drawing



Product	D1	D2	A1	A2	A3
7T8/MAS/24-840/IF11/P/DIM 10/1	25.7 mm	26.3 mm	588.6 mm	595.7 mm	602.8 mm

Photometric data

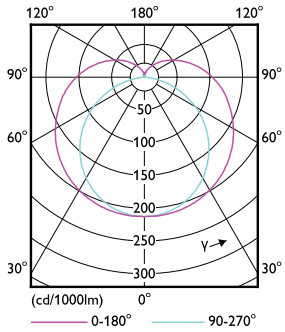


General uniform lighting - 7T8/MAS/24-840/IF11/P/DIM 10/1

Spectral Power Distribution Colour - 7T8/MAS/24-840/IF11/P/DIM 10/1

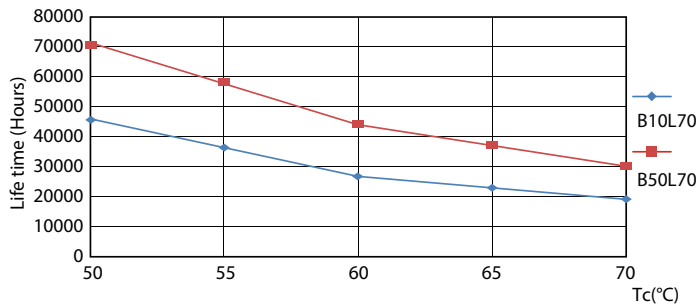
MasterClass InstantFit (UL Type-A) T8

Photometric data

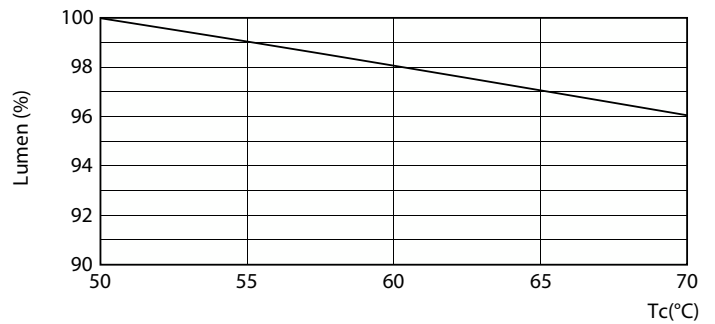


Light Distribution Diagram - 7T8/MAS/24-840/IF11/P/DIM 10/1

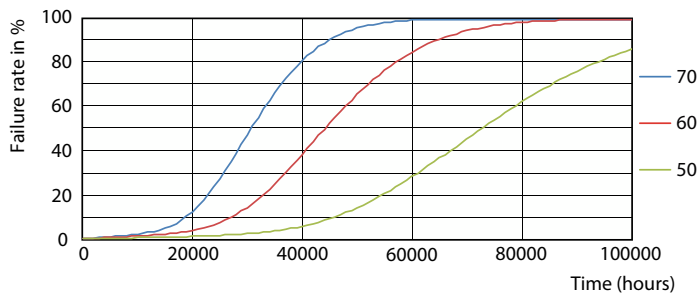
Lifetime



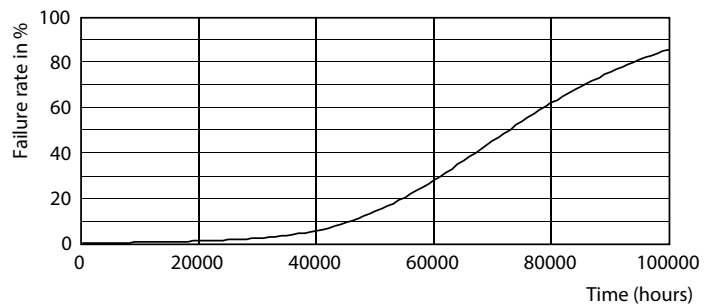
Life Expectancy Diagram - 7T8/MAS/24-840/IF11/P/DIM 10/1



Lumen Maintenance Diagram - 7T8/MAS/24-840/IF11/P/DIM 10/1



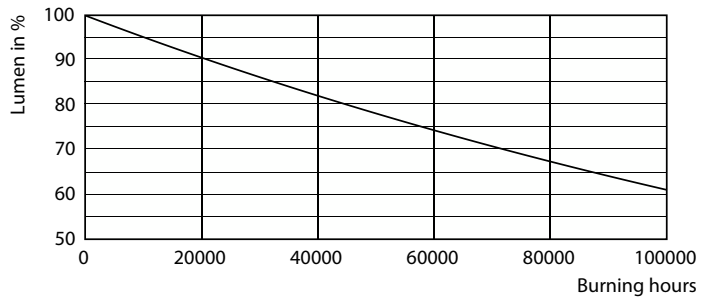
Life Expectancy Diagram - 7T8/MAS/24-840/IF11/P/DIM 10/1



Life Expectancy Diagram - 7T8/MAS/24-840/IF11/P/DIM 10/1

MasterClass InstantFit (UL Type-A) T8

Lifetime



Lumen Maintenance Diagram - 7T8/MAS/24-840/IF11/P/DIM 10/1

