

Project: _____ Type: _____

Drawn by: _____ Catalogue #: _____ Date: _____

Individual Spec Sheet

L2WMG

LED LINKABLE WRAPAROUND HIGH LUMEN OUTPUT & CCT SELECTABLE

ORDERING INFORMATION

Order code: 69372
Model number: L2WMG-24HO-3C-G2
UPC: 069549026858
Case quantity: 12
DLC unique ID: S-JQ2KZH

PHYSICAL DATA

Dimensions in. (cm): 24 (61)
Lens material: Frosted polycarbonate
Housing material: White powder coating steel
Mounting: Surface wall and ceiling mount

PERFORMANCE DATA

Watts (W): 46
Volts (VAC): 120-277
Color temperature (K)¹: 3 000/4 000/5 000
Lumen output (lm)²: 5 354
Efficiency (lm/W): 116
CRI: 83
Life L70 (h)³: 72 000
Tested LM-80 (h)³: 12 000
Dimming: 0-10V
Power factor: >0.90
THD (%): <20
Frequency (Hz): 50/60
Surge protection (kV): 2
Input current (A): 0.56
Operating temp. range: -20 °C to 25 °C (-4 °F to 77 °F)

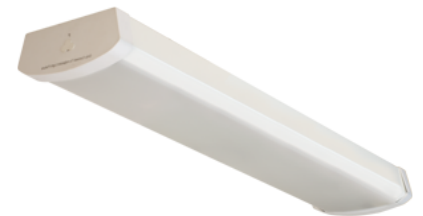
¹ Typical colour temperature range: +/- 5 %
² Lumen values are derived from DLC reported data at 3 500 K. Please refer to the LUMEN SPECIFICATION TABLE for more details on other color temperatures.
³ Life hours are derived from IESNA LM80-08 testing report and projected per IESNA TM-21-11 extrapolations

LUMEN SPECIFICATION TABLE

3 000 K		4 000 K		5 000 K	
Lumen output (lm)	Efficacy (lm/W)	Lumen output (lm)	Efficacy (lm/W)	Lumen output (lm)	Efficacy (lm/W)
5 354	116	5 502	120	5 405	118

DEFAULT PROGRAMMING

4 000 K



Not all products are qualified on the DLC QPL. To view our DLC qualified products, please consult the DLC Qualified Products List at www.designlights.org/search.

COMPATIBLE ACCESSORIES

Order code	Type
68858	Linkable Connector (No cable) ¹
68859	12" Linkable Cable Connector ^{1,2}
68860	48" Linkable Cable Connector
68861	72" Linkable Cable Connector
68862	96" Linkable Cable Connector
69065	End cap for conduit entry (set of 2)

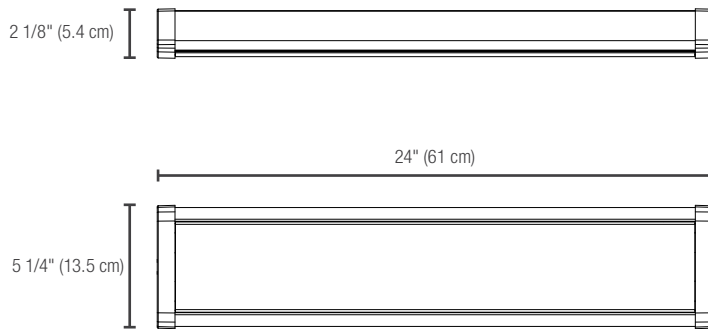
¹ One piece is included in the box, extra units can be purchased separately
² Included only with single CCT version

COMPATIBLE DIMMERS¹

Brand	Model
Leviton	DD 710
	DS 710
Lutron	DVSTV
	NOVA NTSTV DV
Legrand	RH4FBL3PTC
	WS4FBL3P

Dimming range: 10%-100%
¹ This table shows dimmers that have been tested and have demonstrated proper operation under normal conditions. Each installation being unique, various factors such as load, common neutrals or other electrical products on the circuit can, in certain instances, cause variance in system performance. Read and comply to the dimmer installation instructions. Consult dimming system manufacturer for additional support in operation. Some dimmers may require more than one product for stable operation. Stanpro recommends to use dimmers designed to work with LED products. Older dimmers designed for incandescent products may cause erratic operation.

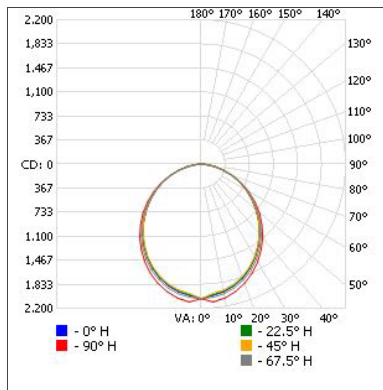
DIMENSIONS



PHOTOMETRIC DATA¹

69372 • L2WMG-24HO-3C-G2 • 46 W • 4 000 K • 5 495.2 lm

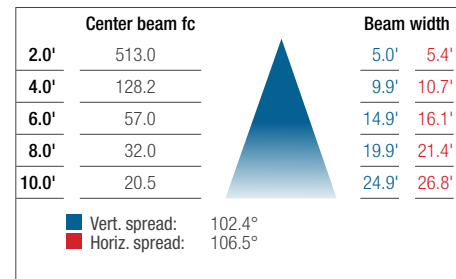
Polar candela distribution



Zonal lumen summary

Zone	Lumens	% Fixture
0-30	1 548.3	28.2
0-40	2 506.7	45.6
0-60	4 337.0	78.9
60-90	1 122.9	20.4
70-100	488.6	8.9
90-120	16.8	0.3
0-90	5 459.9	99.4
90-180	35.4	0.6
0-180	5 495.2	100

Illuminance at a distance



¹ Complete IES files available on our website.

Qty	Description	Price

I accept the specifications of the luminaire configuration mentioned above.

Name: _____
 Company: _____
 Signature: _____

Date: _____

Data is based upon tests performed in a controlled environment. Actual performance can vary depending on operating conditions. All products are subject to change or may be discontinued any time without notice.