



Contractor Type B MainsFit T8

14.5T8/CNG/48-865/MF18/G 25/1

The Contractor-grade MainsFit (UL Type B) lamps are designed to provide simple retrofit solution to move from traditional fluorescent lamps to energy saving LEDs. This ballast bypass lamp is similar to other UL Type B lamps in the Philips family by providing proven energy savings, long life (50k hours), surge suppression and industry leading safety features. All lamps in the Contractor-grade family are also double-ended to help simplify the installation.

Product data

General Information	
Cap-Base	G13 [Medium Bi-Pin Fluorescent]
Nominal lifetime	50,000 hour(s)
Switching Cycle	50,000
Lighting Technology	LED
EU RoHS compliant	Yes
Light Technical	
Color Code	865 [CCT of 6500K]
Beam Angle (Nom)	240 degree(s)
Luminous Flux	1,800 lumen
Color Designation	Cool Daylight
Correlated Color Temperature (Nom)	6500 K
Luminous Efficacy (rated) (Nom)	124.00 lm/W
Color Consistency	<6
Color rendering index (CRI)	80
LLMF At End Of Nominal Lifetime (Nom)	70 %

Operating and Electrical	
Line Frequency	50 to 60 Hz
Input Frequency	50 to 60 Hz
Power Consumption	14.5 W
Starting Time (Nom)	0.5 s
Warm-up time to 60% light	0.5 s
Power Factor (Fraction)	0.9
Voltage (Nom)	120-277 V
Temperature	
Ambient temperature range	-20 °C to 45 °C
T-Case Maximum (Nom)	70 °C
Controls and Dimming	
Dimmable	Limited
Mechanical and Housing	
Bulb Finish	Frosted
Bulb Material	Glass

Contractor Type B MainsFit T8

Product Length	1,200 mm
Bulb Shape	Tube, double-ended

Approval and Application

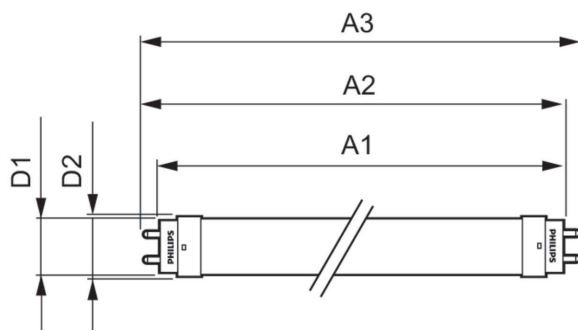
Energy Saving Product	Yes
Approval Marks	RoHS compliance UL certificate DLC compliance

Product Data

Order product name	14.5T8/CNG/48-865/MF18/G 25/1
--------------------	-------------------------------

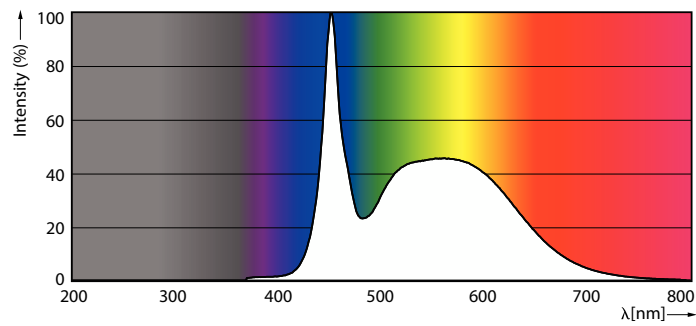
Order code	577791
Numerator - Quantity Per Pack	1
Numerator - Packs per outer box	25
Material Nr. (12NC)	929003474804
Full product name	14.5T8/CNG/48-865/MF18/G 25/1
EAN/UPC - Case	5004667757792
EAN/UPC - Product/Case	04667757797

Dimensional drawing

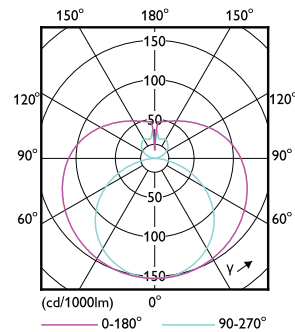


Product	D1	D2	A1	A2	A3
14.5T8/CNG/48-865/MF18/G 25/1	25.7 mm	28 mm	1,198.2 mm	1,205.3 mm	1,212.4 mm

Photometric data



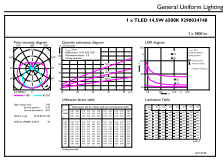
Spectral Power Distribution Colour - 14.5T8/CNG/48-865/MF18/G 25/1



Light Distribution Diagram - 14.5T8/CNG/48-865/MF18/G 25/1

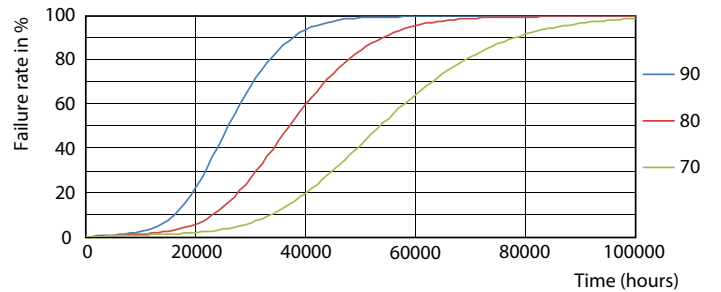
Contractor Type B MainsFit T8

Photometric data



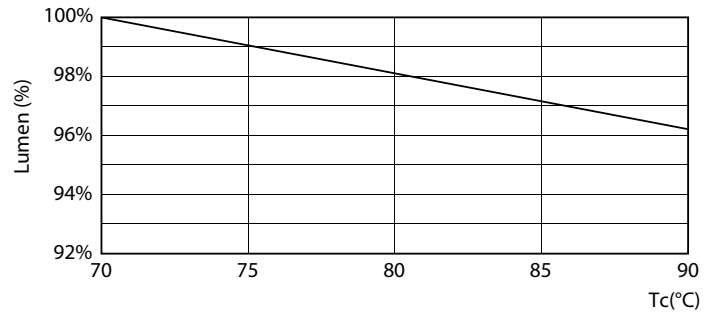
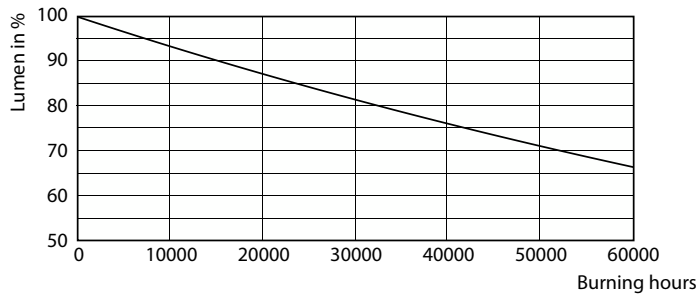
General uniform lighting - 14.5T8/CNG/48-865/MF18/G 25/1

Lifetime



Life Expectancy Diagram - 14.5T8/CNG/48-865/MF18/G 25/1

Life Expectancy Diagram - 14.5T8/CNG/48-865/MF18/G 25/1

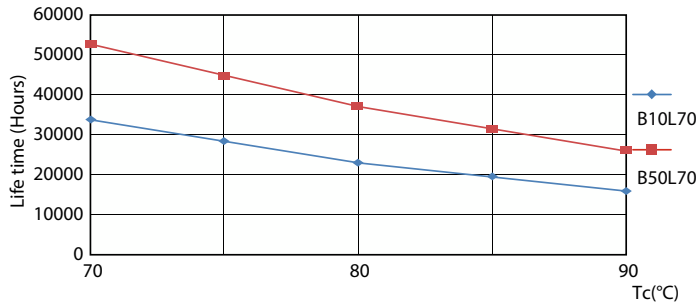


Lumen Maintenance Diagram - 14.5T8/CNG/48-865/MF18/G 25/1

Lumen Maintenance Diagram - 14.5T8/CNG/48-865/MF18/G 25/1

Contractor Type B MainsFit T8

Lifetime



Life Expectancy Diagram - 14.5T8/CNG/48-865/MF18/G 25/1

