

Eaton's Wiring Devices  
Arrow Hart GFCI receptacles

# Eaton's next generation of GFCI receptacles

Slim. Sleek. Simple.



**EATON**

*Powering Business Worldwide*

# Designed to protect.

## Clean, modern design backed by a legacy of safety.

Tested to the highest standards to help ensure safety, Eaton's Arrow Hart next generation of ground fault circuit interrupter (GFCI) receptacles provide code-compliant protection from electrical shock in residential, commercial and industrial applications.

Featuring an updated and modern look with one of the slimmest depths on the market, the GFCI receptacles have been redesigned with innovative features that allow for quick, easy installation and simple use. The devices are offered in a variety of models — tamper resistant (TR), tamper and weather resistant (TWR) and controlled (🔌) — and in numerous colors to meet and compliment any application for new construction and retrofit projects.



### Standard GFCI Receptacle

Designed to provide a clean, aesthetic appeal, the GFCI receptacle markings are minimal to better blend with décor in today's modern buildings and homes.

GF15 & GF20 [pg. 4](#)



**TR**  
TAMPER  
RESISTANT

### Tamper Resistant GFCI Receptacle

The TR identifier/marketing is debossed on the shoulder of the device to give quick confirmation to the installer, while nicely hidden when the wallplate is installed.

TRGF15 & TRGF20 [pg. 5](#)



**TWR**  
TAMPER &  
WEATHER  
RESISTANT

### Tamper and Weather Resistant GFCI Receptacle

The WR identifier/marketing is debossed on the housing face for quick identification of weather resistant and the TR tamper resistant identification is debossed on shoulder, indicating the appropriate receptacle has been installed for both weather and tamper resistant protection.

TWRGF15 & TWRGF20 [pg. 6](#)

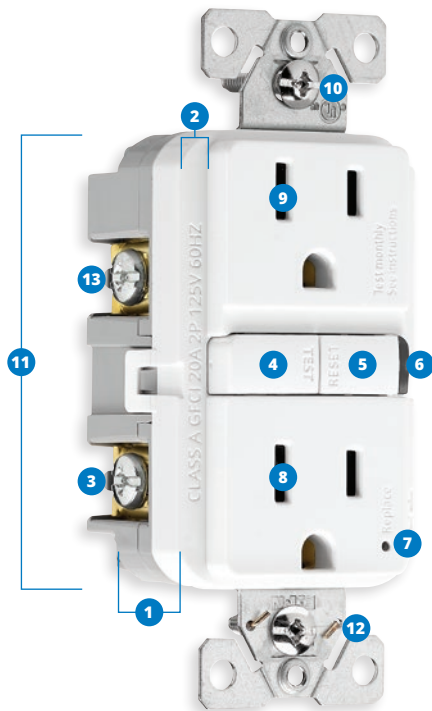


### Controlled GFCI Receptacle

Control marked products indicate the circuit will power down automatically as part of an energy management or building automation protocol.

TRGFC15 & TRGFC20 [pg. 7](#)

# Features & Benefits

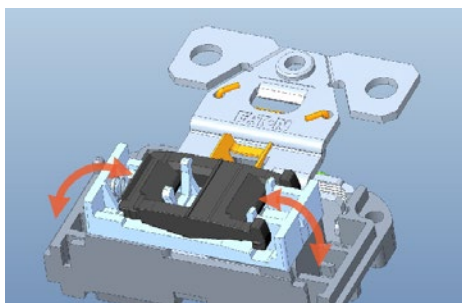


- Slim 1.03-inch depth profile** provides quick and easy installation by allowing more room in the electrical box for wiring, ideal for retrofit as well as two-gang applications.
- GFCI receptacles **sit more flush** with the wallplate for a pleasing aesthetic.
- External backwire clamp** allows visual confirmation of secure wire termination, increasing safety while saving installation time.
- Wider TEST/RESET buttons** make it easier to test and reset. Device can be reset even while a plug is inserted.
- Minimal top housing markings** are debossed and neutrally positioned for easy reading no matter the installation orientation.
- Industry-first!** Larger reset indicator light on the RESET button allows for quick identification of a trip incident, and intuitively orients the end user to push the RESET button, reducing contractor callbacks, saving time and money.
- End of life indicator light flashes red** and is located next to the embossed word "Replace," making it easy to identify when the device has reached its "end of life" and needs to be replaced.
- Tamper resistant shutter system** allows for easy plug insertion, while preventing children from inserting objects (hairpins, keys), protecting them from electric shock, meeting NEC code 406.12.
- Tamper resistant shutters** are black to disappear from view, adding to the clean, modern look.
- Captive screws** allow easier installation.
- Robust thermoplastic construction** provides unmatched durability and high-impact resistance.
- Grounding staple** ensure ground integrity.
- Line side terminals** are backed out for fast installation. All terminals are staked to prevent screws from backing all the way out.

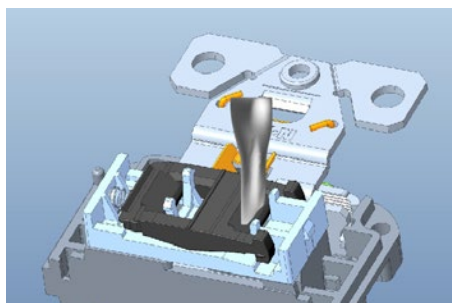
## Tamper resistant GFCI receptacles

Tamper Resistant (TR) receptacles feature a built-in UL listed safety shutter system that prevents the insertion of foreign objects into the receptacle openings. The safety shutters will only open when a two-bladed plug presses simultaneously against the two shutters.

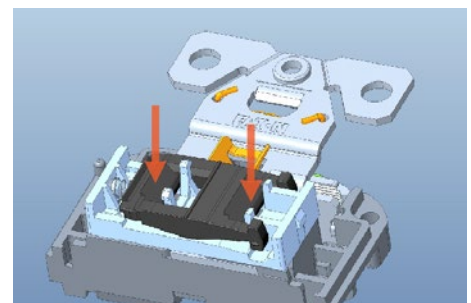
How the tamper resistant system works:



Shutters restrict access in closed position.



Insertion of object in any one side will not open shutters.



Insertion of two-bladed plug or grounding plug will open shutters.

**2023 NEC 406.12 Tamper Resistant Receptacles. All 15- and 20-ampere, 125- and 250-volt nonlocking-type receptacles in the following locations shall be listed tamper resistant receptacles\*:**

### Residential

Required in all dwelling units, boathouses, mobile homes and manufactured homes, including attached and detached garages, accessory buildings, and common areas.

### Commercial

Required in guest rooms and guest suites of hotels, motels, and their common areas; child care facilities, including preschools and education facilities; in clinics, medical and dental offices, and outpatient facilities; dormitory facilities, residential care/assisted living facilities, rehabilitation facilities, and group homes.

### New in NEC 2023

Required for agricultural buildings accessible to the general public, such as pumpkin patches, petting farms, christmas tree farms, and similar venues.

\*Please refer to latest NEC for full list of locations requiring tamper resistance



# Standard GFCI receptacle

## FEATURES

- Slim design for easy installation, leaving more room for wires in the box
- Automatically self-tests periodically to ensure GFCI protection
- GFCIs incorporate lock-out functionality to protect against mis-wired line-load connections and GFCI circuitry damage
- Intuitive LED status indicators for trip and end of life states
- Meets and exceeds 10 kA short circuit testing and Underwriters Laboratories (UL) UL943 safety standards
- Automatic grounding system eliminates need for bonding jumper in grounded metal enclosure, provides redundant measure of ground continuity where jumper is used

## APPLICATIONS

- Arrow Hart GFCI receptacles are UL Listed and fully compliant with all of the latest UL943 Class A GFCI and UL498 requirements
- GFCI protection is required wherever receptacles are near wet or damp locations, such as public bathrooms, garages, and food service areas, and all other areas mandated by the NEC



### GF15W

Minimal top housing markings for clean aesthetic

Wider TEST/RESET buttons make it easier to test and reset. Device can be reset while a plug is inserted

## STANDARD GFCI

2-pole, 3-wire grounding



Rating		NEMA	Color suffix	Catalog no.	Features
W	V/AC				
15	125	5-15R	B, BK, GY, LA, V, W	□GF15__	
15	125	5-15R	BK, W	□GF15__-WP	Includes standard size wallplate
20	125	5-20R	B, BK, GY, LA, RD, V, W	□GF20__*	

Wallplate not included unless specifically stated; \*FedSpec certification on 20A only.

### Color ordering information:

For ordering devices, include Catalog No. followed by the Color suffix: B (Brown), BK (Black), GY (Gray), LA (Light Almond), RD (Red), V (Ivory), W (White).

### AVAILABLE IN THESE COLORS

\*For ordering devices, include Cat. no. followed by the color suffix, for example: GF15\_W



## SPECIFICATIONS

<b>Electrical</b>	<p><b>Dielectric voltage:</b> Withstands 2000V per UL 498</p> <p><b>Current interrupting:</b> Yes, at full-rated current</p> <p><b>Temperature rise:</b> Max. 30°C (86°F) after 100 cycles of overload @ 150% of rated current (DC)</p> <p><b>Trip time:</b> 0.025 seconds (Class A)</p> <p><b>Frequency:</b> 60 Hz; Voltage: 125V;</p> <p><b>Amperage:</b> 15A/20A, 20A feed-through</p> <p><b>Short circuit testing:</b> Meets and exceeds 10 kA</p> <p><b>Maximum interrupting capacity:</b> 20 Amps</p>
<b>Testing &amp; code compliance</b>	cULus Listed to UL 498 and UL 943, file no. E60120 Meets all UL 943 (GFCI), UL 498 (receptacles) and applicable CSA requirements; NOM certified; Federal Specification W-C-596 for 20A models
<b>Environmental</b>	<p><b>Flammability:</b> Meets UL 94 requirements; V2 rated</p> <p><b>Temperature rating:</b> -35°C to 66°C (-31°F to 150.8°F)</p>
<b>Mechanical</b>	<p><b>Terminal accommodation:</b> #14 - 10 AWG</p> <p><b>Voltage ratings:</b> Permanently marked on device</p>

Compliances, specifications and availability are subject to change without notice.



Scan the QR code for more information on our wallplates



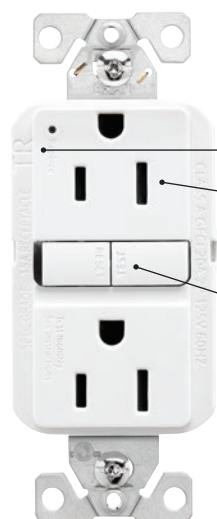
# Tamper resistant GFCI receptacle

## FEATURES

- Slim design for easy installation, leaving more room for wires in the box
- Child-safety black tamper resistant shutters help prevent improper insertion of foreign objects (keys, hairpins, etc)
- Automatically self-tests periodically to ensure GFCI protection
- GFCIs incorporate lock-out functionality to protect against mis-wired line-load connections and GFCI circuitry damage
- Intuitive LED status indicators for trip and end of life states
- Meets and exceeds 10 kA short circuit testing and Underwriters Laboratories (UL) UL943 safety standards
- Automatic grounding system eliminates need for bonding jumper in grounded metal enclosure, provides redundant measure of ground continuity where jumper is used

## APPLICATIONS

- Arrow Hart GFCI receptacles are UL Listed and fully compliant with all of the latest UL943 Class A GFCI and UL498 requirements
- GFCI protection is required wherever receptacles are near wet or damp locations, such as public bathrooms, garages, and food service areas, and all other areas mandated by the NEC
- Complies with NEC Article 406.12 that states that all 15A 125V receptacles installed in dwelling units must be tamper resistant



## TRGF15W

TR mark debossed on shoulder  
 Tamper resistant shutters are black to disappear from view, adding to the clean, modern look

Wider TEST/RESET buttons make it easier to test and reset. Device can be reset while a plug is inserted



## TAMPER RESISTANT GFCI RECEPTACLE

2-pole, 3-wire grounding



Rating	W	V/AC	NEMA	Color suffix	Catalog no.	Features
15	125	5-15R	B, BK, GY, LA, V, W	□TRGF15__		
15	125	5-15R	W	□TRGF15__-WP		Includes standard size wallplate
15	125	5-15R	LA, V, W	□TRGF15__-3-L		Pack of three
15	125	5-15R	W	□TRGF15__50		Pack of 50
20	125	5-20R	B, BK, GY, LA, RD, V, W	□TRGF20__*		
20	125	5-20R	W	□TRGF20__-3-L*		Pack of three
20	125	5-20R	W	□TRGF20__50*		Pack of 50

Wallplate not included unless specifically stated; \*FedSpec certification on 20A only.

## Color ordering information:

For ordering devices, include Catalog No. followed by the Color suffix: B (Brown), BK (Black), GY (Gray), LA (Light Almond), RD (Red), V (Ivory), W (White).

## AVAILABLE IN THESE COLORS

\*For ordering devices, include Cat. no. followed by the color suffix, for example: GF15\_W



## SPECIFICATIONS

<b>Electrical</b>	<p><b>Dielectric voltage:</b> Withstands 2000V per UL 498</p> <p><b>Current interrupting:</b> Yes, at full-rated current</p> <p><b>Temperature rise:</b> Max. 30°C (86°F) after 100 cycles of overload @ 150% of rated current (DC)</p> <p><b>Trip time:</b> 0.025 seconds (Class A)</p> <p><b>Frequency:</b> 60 Hz; Voltage: 125V;</p> <p><b>Amperage:</b> 15A/20A, 20A feed-through</p> <p><b>Short circuit testing:</b> Meets and exceeds 10 kA</p> <p><b>Maximum interrupting capacity:</b> 20 Amps</p>
<b>Testing &amp; code compliance</b>	<p>cULus Listed to UL 498 and UL 943, file no. E60120</p> <p>Meets all UL 943 (GFCI), UL 498 (receptacles) and applicable CSA requirements; NOM certified; Federal Specification W-C-596 for 20A models</p>
<b>Environmental</b>	<p><b>Flammability:</b> Meets UL 94 requirements; V2 rated</p> <p><b>Temperature rating:</b> -35°C to 66°C (-31°F to 150.8°F)</p>
<b>Mechanical</b>	<p><b>Terminal accommodation:</b> #14 - 10 AWG</p> <p><b>Voltage ratings:</b> Permanently marked on device</p>

Compliances, specifications and availability are subject to change without notice.



Scan the QR code for more information on our wallplates



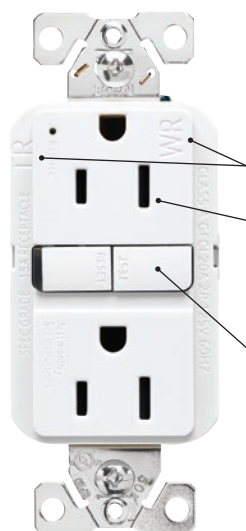
# Tamper and weather resistant GFCI receptacle

## FEATURES

- Slim design for easy installation, leaving more room for wires in the box
- Child-safety black tamper resistant shutters help prevent improper insertion of foreign objects (keys, hairpins, etc)
- Nickel-plated stainless steel strap and screws for added corrosion resistance
- Automatically self-tests periodically to ensure GFCI protection
- GFCIs incorporate lock-out functionality to protect against mis-wired line-load connections and GFCI circuitry damage
- Intuitive LED status indicators for trip and end of life states
- Meets and exceeds 10 kA short circuit testing and Underwriters Laboratories (UL) UL943 safety standards
- Automatic grounding system eliminates need for bonding jumper in grounded metal enclosure, provides redundant measure of ground continuity where jumper is used

## APPLICATIONS

- Arrow Hart GFCI receptacles are UL Listed and fully compliant with all of the latest UL943 Class A GFCI and UL498 requirements
- GFCI protection is required wherever receptacles are near wet or damp locations, such as public bathrooms, garages, outdoor locations, and food service areas, and all other areas mandated by the NEC
- Complies with NEC Article 406.9 that states that all receptacles installed in wet or damp locations must be weather resistant (Must be installed in weatherproof box)



## TWRGF15W

TR and WR markings debossed in top housing

Tamper resistant shutters are black to disappear from view, adding to the clean, modern look

Wider TEST/RESET buttons make it easier to test and reset. Device can be reset while a plug is inserted



## TAMPER AND WEATHER RESISTANT GFCI RECEPTACLE

2-pole, 3-wire grounding



Rating	W	V/AC	NEMA	Color suffix	Catalog no.	Features
15	125	5-15R	B, BK, GY, LA, V, W	<input type="checkbox"/> TWRGF15__		
15	125	5-15R	W	<input type="checkbox"/> TWRGF15__-50	Pack of 50	
20	125	5-20R	B, BK, GY, LA, V, W	<input type="checkbox"/> TWRGF20__*		
20	125	5-20R	BK, LA, W	<input type="checkbox"/> TWRGF20__-50*	Pack of 50	

Wallplate not included unless specifically stated; \*FedSpec certification on 20A only.

## Color ordering information:

For ordering devices, include Catalog No. followed by the Color suffix: B (Brown), BK (Black), GY (Gray), LA (Light Almond), RD (Red), V (Ivory), W (White).

## AVAILABLE IN THESE COLORS

\*For ordering devices, include Cat. no. followed by the color suffix, for example: GF15\_W

<b>B</b>	<b>BK</b>	<b>GY</b>	<b>LA</b>	<b>V</b>	<b>W</b>
Brown	Black	Gray	Light Almond	Ivory	White

## SPECIFICATIONS

<b>Electrical</b>	<p><b>Dielectric voltage:</b> Withstands 2000V per UL 498</p> <p><b>Current interrupting:</b> Yes, at full-rated current</p> <p><b>Temperature rise:</b> Max. 30°C (86°F) after 100 cycles of overload @ 150% of rated current (DC)</p> <p><b>Trip time:</b> 0.025 seconds (Class A)</p> <p><b>Frequency:</b> 60 Hz; Voltage: 125V;</p> <p><b>Amperage:</b> 15A/20A, 20A feed-through</p> <p><b>Short circuit testing:</b> Meets and exceeds 10 kA</p> <p><b>Maximum interrupting capacity:</b> 20 Amps</p>
<b>Testing &amp; code compliance</b>	cULus Listed to UL 498 and UL 943, file no. E60120 Meets all UL 943 (GFCI), UL 498 (receptacles) and applicable CSA requirements; NOM certified; Federal Specification W-C-596 for 20A models
<b>Environmental</b>	<p><b>Flammability:</b> Meets UL 94 requirements; V2 rated</p> <p><b>Temperature rating:</b> -35°C to 66°C (-31°F to 150.8°F)</p>
<b>Mechanical</b>	<p><b>Terminal accommodation:</b> #14 - 10 AWG</p> <p><b>Voltage ratings:</b> Permanently marked on device</p>

Compliances, specifications and availability are subject to change without notice.



Scan the QR code for more information on our while-in-use covers



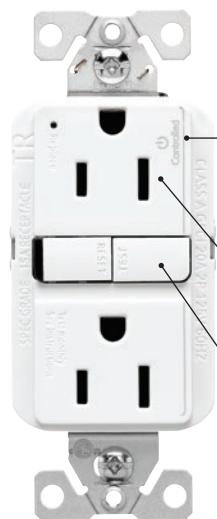
# Controlled GFCI Receptacle

## FEATURES

- Slim design for easy installation, leaving more room for wires in the box
- Child-safety black tamper resistant shutters help prevent improper insertion of foreign objects (keys, hairpins, etc)
- Automatically self-tests periodically to ensure GFCI protection
- GFCIs incorporate lock-out functionality to protect against mis-wired line-load connections and GFCI circuitry damage
- Intuitive LED status indicators for trip and end of life states
- Meets and exceeds 10 kA short circuit testing and Underwriters Laboratories (UL) UL943 safety standards
- Automatic grounding system eliminates need for bonding jumper in grounded metal enclosure, provides redundant measure of ground continuity where jumper is used

## APPLICATIONS

- Arrow Hart GFCI receptacles are UL Listed and fully compliant with all of the latest UL943 Class A GFCI and UL498 requirements
- GFCI protection is required wherever receptacles are near wet or damp locations, such as public bathrooms, garages, and food service areas, and all other areas mandated by the NEC
- Arrow Hart controlled GFCI receptacles are NEMA approved and compliant with the National Electric Code article 406.3, CA Title 24 standard, and ASHRAE 90.1 Energy Efficiency standard



## TRGFC15W

NEMA-approved controlled symbol and "controlled" pad printed on the face of the receptacle provides easy recognition of controlled outlet

Tamper resistant shutters are black to disappear from view, adding to the clean, modern look

Wider TEST/RESET buttons make it easier to test and reset. Device can be reset while a plug is inserted



## CONTROLLED GFCI RECEPTACLE

2-pole, 3-wire grounding



Rating		NEMA	Color suffix	Catalog no.
W	V/AC			
15	125	5-15R	BK, GN, GY, LA, V, W	□TRGFC15__
20	125	5-20R	BK, GN, GY, LA, V, W	□TRGFC20__*

Wallplate not included unless specifically stated; \*FedSpec certification on 20A only.

### Color ordering information:

For ordering devices, include Catalog No. followed by the Color suffix: BK (Black), GN (Green), GY (Gray), LA (Light Almond), V (Ivory), W (White).

### AVAILABLE IN THESE COLORS

\*For ordering devices, include Cat. no. followed by the color suffix, for example: GF15\_W



## SPECIFICATIONS

<b>Electrical</b>	<p><b>Dielectric voltage:</b> Withstands 2000V per UL 498</p> <p><b>Current interrupting:</b> Yes, at full-rated current</p> <p><b>Temperature rise:</b> Max. 30°C (86°F) after 100 cycles of overload @ 150% of rated current (DC)</p> <p><b>Trip time:</b> 0.025 seconds (Class A)</p> <p><b>Frequency:</b> 60 Hz; Voltage: 125V;</p> <p><b>Amperage:</b> 15A/20A, 20A feed-through</p> <p><b>Short circuit testing:</b> Meets and exceeds 10 kA</p> <p><b>Maximum interrupting capacity:</b> 20 Amps</p>
<b>Testing &amp; code compliance</b>	cULus Listed to UL 498 and UL 943, file no. E60120 Meets all UL 943 (GFCI), UL 498 (receptacles) and applicable CSA requirements; NOM certified; Federal Specification W-C-596 for 20A models
<b>Environmental</b>	<p><b>Flammability:</b> Meets UL 94 requirements; V2 rated</p> <p><b>Temperature rating:</b> -35°C to 66°C (-31°F to 150.8°F)</p>
<b>Mechanical</b>	<p><b>Terminal accommodation:</b> #14 - 10 AWG</p> <p><b>Voltage ratings:</b> Permanently marked on device</p>

Compliances, specifications and availability are subject to change without notice.



Scan the QR code for more information on our controlled receptacles

# We make what matters work.\*

\* At Eaton, we believe that power is a fundamental part of just about everything people do. Technology, transportation, energy and infrastructure-these are things the world relies on every day. That's why Eaton is dedicated to helping our customers find new ways to manage electrical, hydraulic and mechanical power more efficiently, safely and sustainably. To improve people's lives, the communities where we live and work, and the planet our future generations depend upon. Because that's what really matters. And we're here to make sure it works.

See more at [Eaton.com/whatmatters](https://Eaton.com/whatmatters)



For more information  
[Eaton.com/GFCIreceptacles](https://Eaton.com/GFCIreceptacles)

Electrical Sector  
1123 Hwy 74 S  
Peachtree City, GA 30269  
United States  
[Eaton.com](https://Eaton.com)  
[Eaton.com/GFCIreceptacles](https://Eaton.com/GFCIreceptacles)

**Eaton**  
1000 Eaton Boulevard  
Cleveland, OH 44122  
United States  
[Eaton.com](https://Eaton.com)

© 2023 Eaton  
All Rights Reserved  
Printed in USA  
Publication No. BR610083EN  
July 2023

Electrical Sector  
Canada Operations  
5925 McLaughlin Road  
Mississauga, Ontario, L5R 1B8  
Canada  
[EatonCanada.ca](https://EatonCanada.ca)  
[Eaton.com/GFCIreceptacles](https://Eaton.com/GFCIreceptacles)

Eaton is a registered trademark.  
All other trademarks are property  
of their respective owners.

Electrical Sector  
Mexico Operations  
Carr. Tlalnepantla -  
Cuautitlan Km 17.8 s/n  
Col. Villa Jardin esq.  
Cerrada 8 de Mayo  
Cuautitlan, Mexico CP 54800  
Mexico  
[Eaton.mx](https://Eaton.mx)  
[Eaton.com/GFCIreceptacles](https://Eaton.com/GFCIreceptacles)

Follow us on social media to get the  
latest product and support information.

